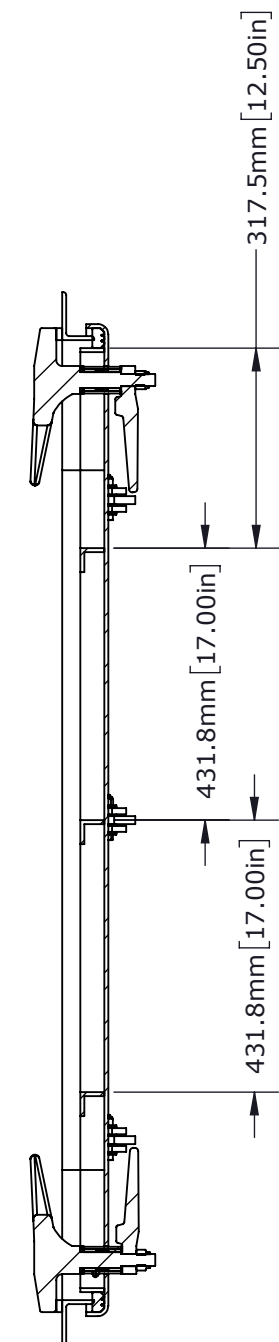
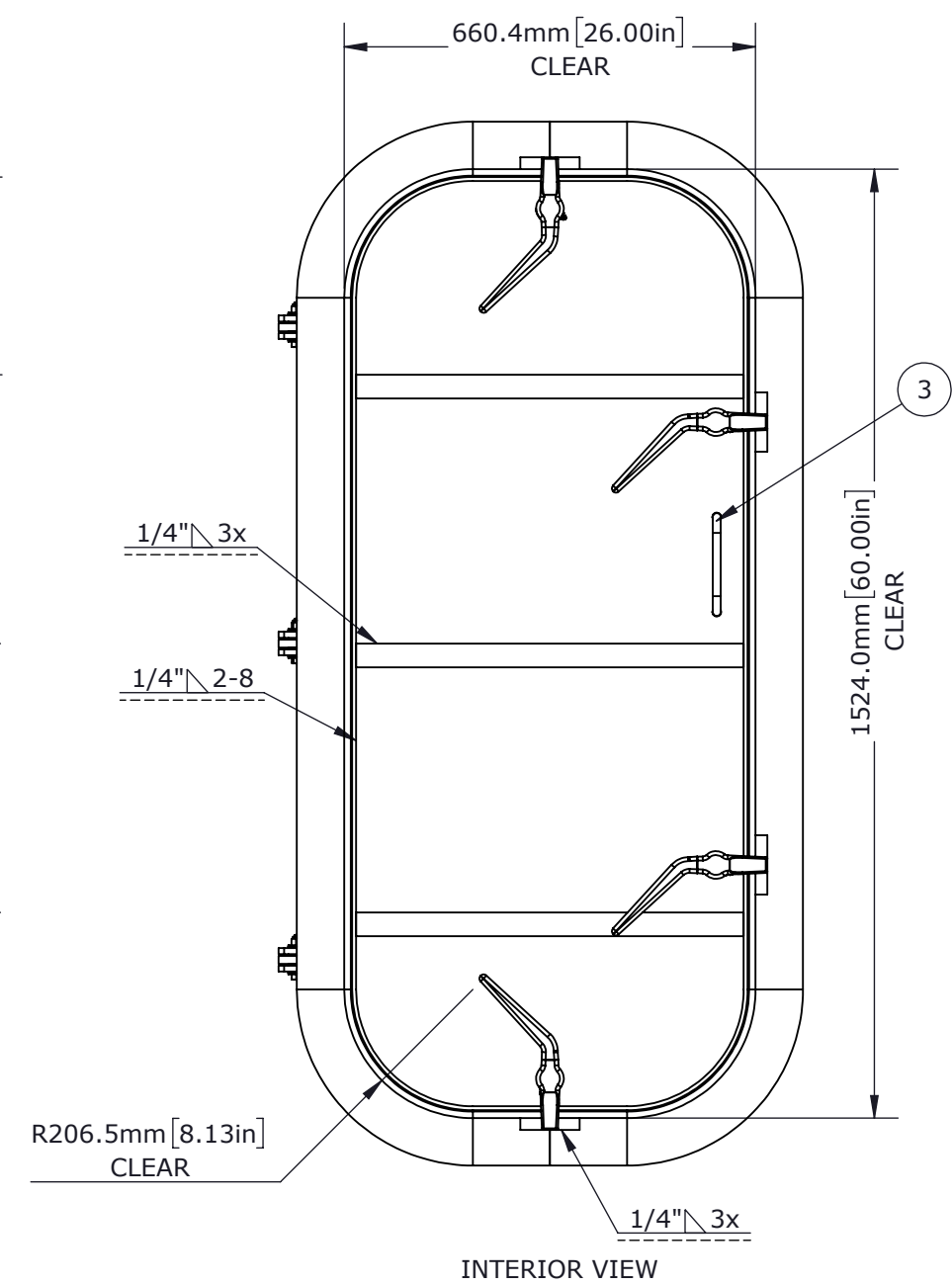


EXTERIOR VIEW



SECTION A-A
KEY PLAN
RH OUTWARD OPEN



INTERIOR VIEW

REVISIONS

REV.	DESCRIPTION	BY	DATE
A	PRODUCTION RELEASE	MT	11/17/16
B	REVISED DOG HANDING	MT	11/29/16
C	WAS SLOTTED HINGES	ZJC	12/05/16

GENERAL NOTES

1. REMOVE ALL BURRS AND BREAK ALL SHARP EDGES AND CORNERS 1.0mm (0.04") MAX.
 2. WELD IN INSTALLATION.
 3. SEALING STANDARD: CHALK TEST
 4. FINISH B - COMMERCIAL QUALITY
- FOR ADDITIONAL INFORMATION CONTACT YOUR SALES REPRESENTATIVE OR PROJECT MANAGER.

CUSTOMER APPROVAL

IMPORTANT! THIS DRAWING SUPERSEDES ALL OTHER DOCUMENTS. BY SIGNING THIS APPROVAL YOU ACCEPT AND AGREE THAT THE DIMENSIONS AND DETAILS SHOWN ARE CORRECT AND PROPERLY FIT YOUR APPLICATION, REGARDLESS OF ANY DIFFERENCES BETWEEN THIS DRAWING AND ANY PRIOR CONTRACT SPECIFICATIONS. SHOULD YOU HAVE ANY QUESTIONS OR SEE ANY ERRORS, DO NOT SIGN THIS APPROVAL UNTIL THE DRAWING IS CORRECTED.

SIGN _____ DATE _____

UNLESS OTHERWISE SPECIFIED, DIMENSIONS ARE IN MILLIMETERS. TOLERANCES FOR ROUGH AND CLEAR OPENINGS ARE ±3mm (.125"). ALL OTHERS ARE:

METRIC	X	.X	.XX	ANGLES
	±2.5	±.8	±.25	±2°
IMPERIAL	.X	.XX	.XXX	ANGLES
	±.1	±.03	±.010	±2°

BAR CODE	CAGE CODE
	64747

COPYRIGHT 2016 ADVANTEC GLOBAL INNOVATIONS. ALL RIGHTS RESERVED. CONFIDENTIAL PROPERTY OF ADVANTEC GLOBAL INNOVATIONS. UNAUTHORIZED USE, REPRODUCTION OR DISTRIBUTION IS STRICTLY PROHIBITED. COPIES REMAIN THE PROPERTY OF ADVANTEC GLOBAL INNOVATIONS AND MUST BE RETURNED UPON REQUEST.

CLIENT
FME

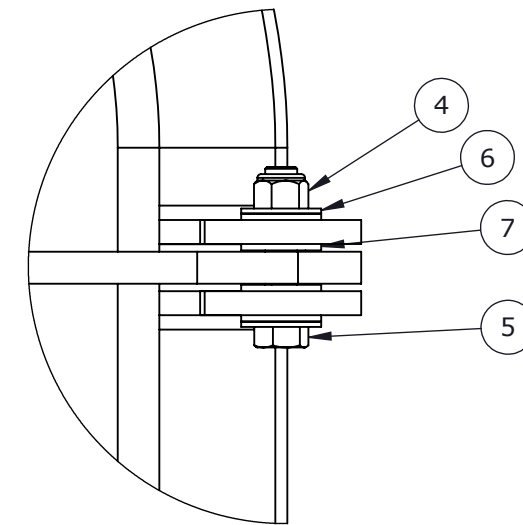
PROJECT TITLE
STOCK 1212 BULKHEAD DOOR

DWG TITLE	QTY

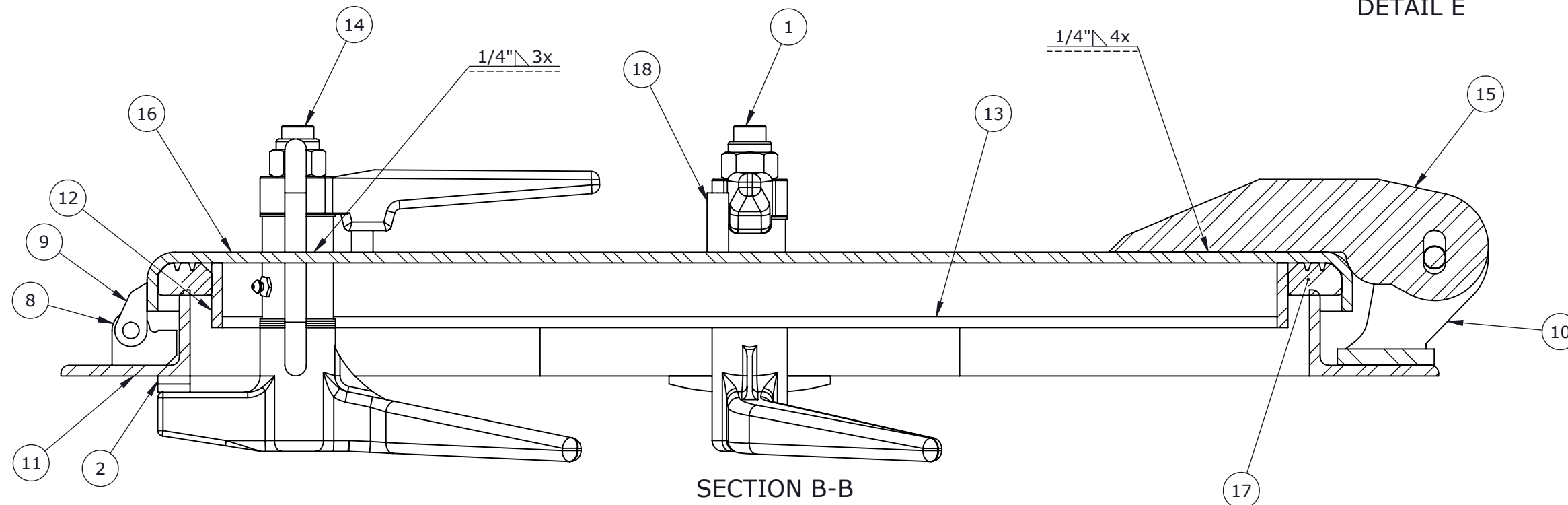
SCALE	DRAWN	DATE	CHECKED	DATE	SIZE
1:12	YFH	12/12/2016			B

S.O. NO	DWG NO	SHEET	REV
	1212-2660R	3 of 16	C

ITEM	QTY	PART NUMBER	DESCRIPTION	MATERIAL
1	3	0223-1003	DOG ASSY, INDIVIDUAL, CENTEX, STEEL, LH	STEEL
2	4	0231-2136	QUICK ACTING DOG WEDGE	PLATE, STL .75IN A36 (0715-2029)
3	2	0243-2031	PULL HANDLE	BAR, STL A36 .5IN DIA ROUND (0615-9600)
4	3	0411-2027	NUT .50IN-13 SS 316 NYLOCK	SS 316/316L
5	3	0411-2029	SCREW, HH .5-13X2.5IN	STAINLESS STEEL, 316
6	6	0411-2693	WASHER, FLAT	316/316L STAINLESS STEEL
7	12	0413-2111	WASHER	Nylon 6/10
8	1	0422-2800	PADLOCK HASP	PLATE, STL .188IN A36 (0715-2033)
9	1	0422-2801	PADLOCK HASP	PLATE, STL .188IN A36 (0715-2033)
10	3	0462-2637	HINGE BASE	STAINLESS STEEL
11	2	0616-2074	COAMING	ANGLE, STL A36 HR 3X2X.25IN (0615-9587)
12	2	0616-2076	GASKET RETAINER/STIFFENER	BAR, STL A36 HR .25X1.5IN (0615-9598)
13	3	1212-208	STIFFENER	ANGLE, STL A36 HR 1.5X1.5X.25IN (0615-9502)
14	1	0223-1002	DOG ASSY, INDIVIDUAL, CENTEX, STEEL,RH	STEEL
15	3	0462-2574	BLADE, HINGE	PLATE, STL .50IN A36 (0715-2028)
16	1	0716-2052	PANEL	PLATE, STL .25IN A36 GRY (0715-2027)
17	1	1212-203	GASKET	25 DURO NEOPRENE (0631-9854)
18	4	0614-2048	STOP, DOG SS 316L .5 DIA ROUND X 1.375	S/S



DETAIL E



SECTION B-B

REVISIONS

SEE PAGE 1 FOR ALL REVISIONS

GENERAL NOTES

1. SEE PAGE 1.

CUSTOMER APPROVAL

IMPORTANT! THIS DRAWING SUPERSEDES ALL OTHER DOCUMENTS. BY SIGNING THIS APPROVAL YOU ACCEPT AND AGREE THAT THE DIMENSIONS AND DETAILS SHOWN ARE CORRECT AND PROPERLY FIT YOUR APPLICATION, REGARDLESS OF ANY DIFFERENCES BETWEEN THIS DRAWING AND ANY PRIOR CONTRACT SPECIFICATIONS. SHOULD YOU HAVE ANY QUESTIONS OR SEE ANY ERRORS, DO NOT SIGN THIS APPROVAL UNTIL THE DRAWING IS CORRECTED.

SIGN _____ DATE _____

UNLESS OTHERWISE SPECIFIED, DIMENSIONS ARE IN MILLIMETERS. TOLERANCES FOR ROUGH AND CLEAR OPENINGS ARE ±3mm (.125"). ALL OTHERS ARE:

	X	.X	.XX	ANGLES
METRIC	±2.5	±.8	±.25	±2°
IMPERIAL	±.1	±.03	±.010	±2°

BAR CODE	CAGE CODE
	64747



COPYRIGHT 2016 ADVANTEC GLOBAL INNOVATIONS. ALL RIGHTS RESERVED. CONFIDENTIAL PROPERTY OF ADVANTEC GLOBAL INNOVATIONS. UNAUTHORIZED USE, REPRODUCTION OR DISTRIBUTION IS STRICTLY PROHIBITED. COPIES REMAIN THE PROPERTY OF ADVANTEC GLOBAL INNOVATIONS AND MUST BE RETURNED UPON REQUEST.

CLIENT
FME

PROJECT TITLE
STOCK 1212 BULKHEAD DOOR

DWG TITLE					QTY
SCALE	DRAWN	DATE	CHECKED	DATE	SIZE
1:3	YFH	12/12/2016			B
S.O. NO	DWG NO	SHEET	REV		
	1212-2660R	4	C	of 16	