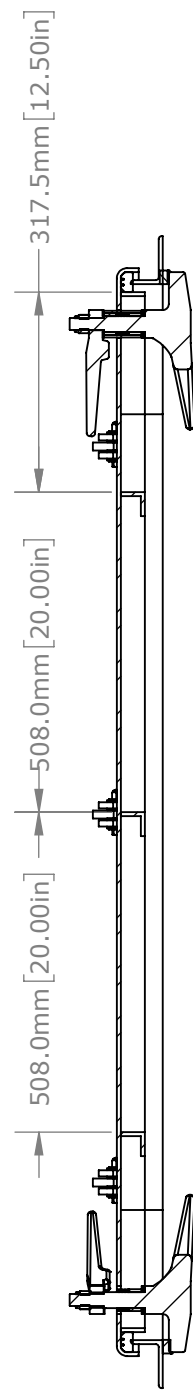
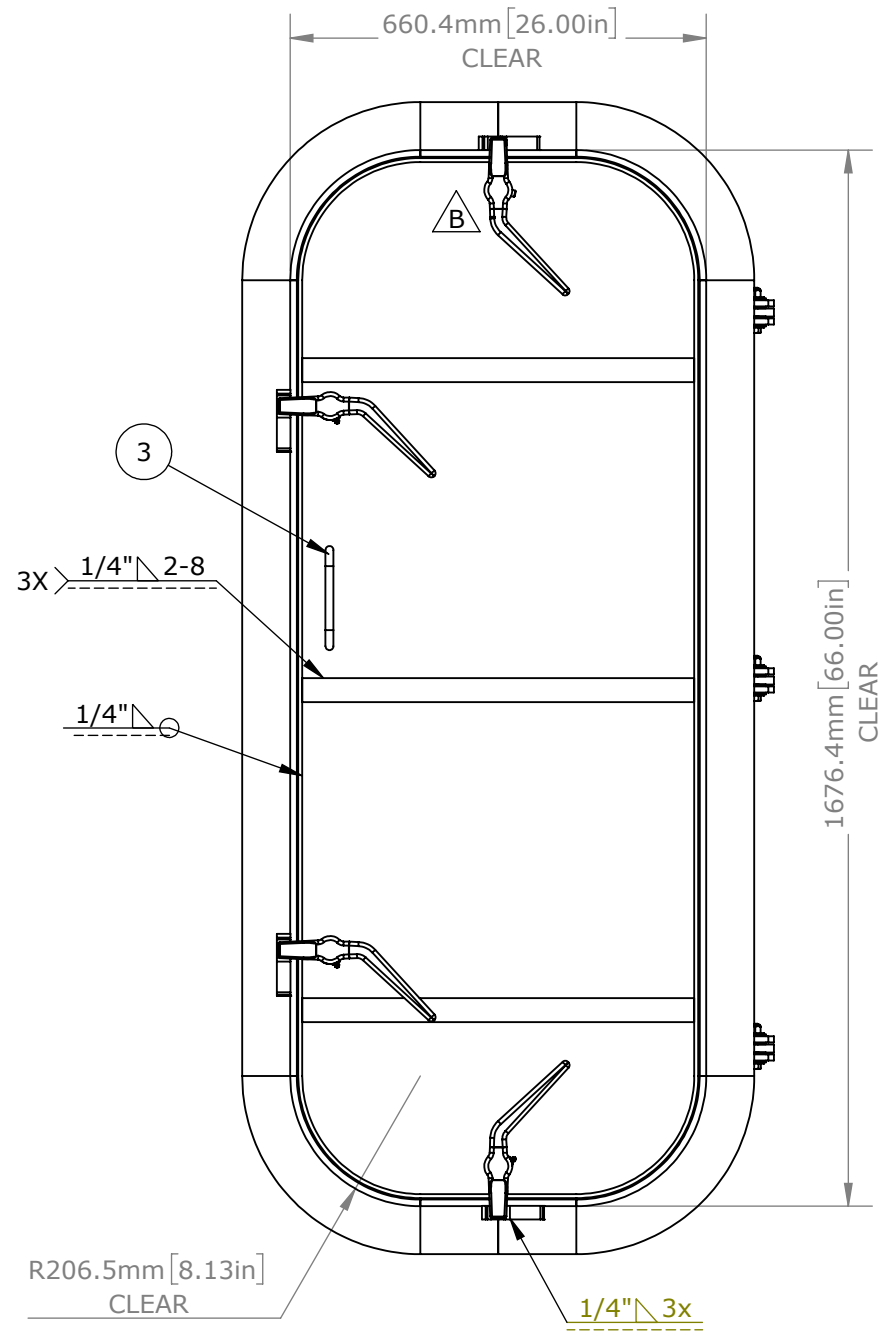


EXTERIOR VIEW



SECTION A-A

KEY PLAN
LH OUTWARD OPEN



INTERIOR VIEW

REVISIONS

REV.	DESCRIPTION	BY	DATE
A	PRODUCTION RELEASE	MT	11/17/16
B	REVISED DOG HANDING	MT	11/29/16
13	WAS SLOTTED HINGES, ADDED DOG STOPS	ZJC	12/05/16

GENERAL NOTES

1. REMOVE ALL BURRS AND BREAK ALL SHARP EDGES AND CORNERS 1.0mm (0.04") MAX.
2. WELD IN INSTALLATION.
3. SEALING STANDARD: CHALK TEST
4. FINISH B - COMMERCIAL QUALITY

FOR ADDITIONAL INFORMATION CONTACT YOUR SALES REPRESENTATIVE OR PROJECT MANAGER.

CUSTOMER APPROVAL

IMPORTANT! THIS DRAWING SUPERSEDES ALL OTHER DOCUMENTS. BY SIGNING THIS APPROVAL YOU ACCEPT AND AGREE THAT THE DIMENSIONS AND DETAILS SHOWN ARE CORRECT AND PROPERLY FIT YOUR APPLICATION, REGARDLESS OF ANY DIFFERENCES BETWEEN THIS DRAWING AND ANY PRIOR CONTRACT SPECIFICATIONS. SHOULD YOU HAVE ANY QUESTIONS OR SEE ANY ERRORS, DO NOT SIGN THIS APPROVAL UNTIL THE DRAWING IS CORRECTED.

SIGN _____ DATE _____

UNLESS OTHERWISE SPECIFIED, DIMENSIONS ARE IN MILLIMETERS. TOLERANCES FOR ROUGH AND CLEAR OPENINGS ARE ±3mm (.125"). ALL OTHERS ARE:

	X	.X	.XX	ANGLES
METRIC	±2.5	±.8	±.25	±2°
IMPERIAL	.X	.XX	.XXX	ANGLES ±2°

BAR CODE _____ CAGE CODE _____

64747



COPYRIGHT 2016 ADVANTEC GLOBAL INNOVATIONS. ALL RIGHTS RESERVED. CONFIDENTIAL PROPERTY OF ADVANTEC GLOBAL INNOVATIONS. UNAUTHORIZED USE, REPRODUCTION OR DISTRIBUTION IS STRICTLY PROHIBITED. COPIES REMAIN THE PROPERTY OF ADVANTEC GLOBAL INNOVATIONS AND MUST BE RETURNED UPON REQUEST.

CLIENT **FME**

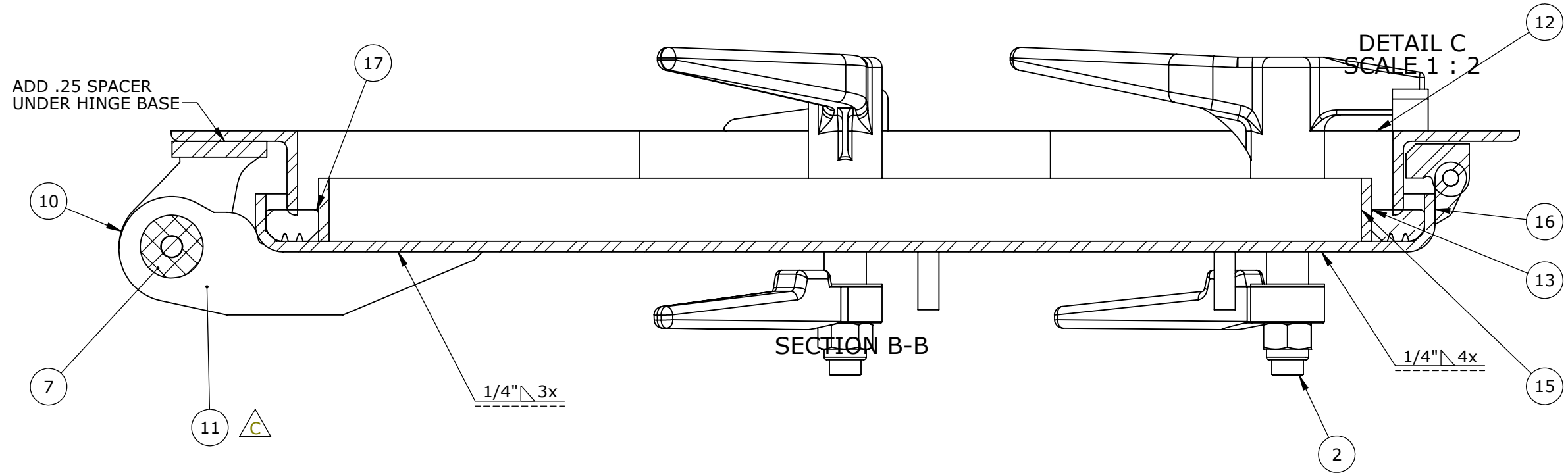
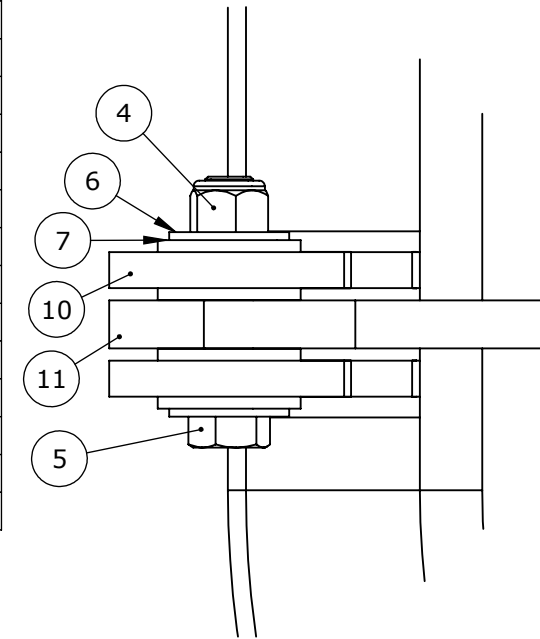
PROJECT TITLE **STOCK 1212 BULKHEAD DOOR**

DWG TITLE _____ QTY _____

SCALE 1:12 DRAWN MT DATE 11/17/2016 CHECKED _____ DATE _____ SIZE B

S.O. NO _____ DWG NO 1212-2666L SHEET 1 of 2 REV 13

ITEM	QTY	PART NUMBER	DESCRIPTION	MATERIAL
1	1	0223-1002	DOG ASSY, INDIVIDUAL, RH	STEEL
2	3	0223-1003	DOG ASSY, INDIVIDUAL,STEEL, LH	REF S.A. BOM
3	2	0243-2031	PULL HANDLE	BAR, STL A36 .5IN DIA ROUND (0615-9600)
4	3	0411-2027	NUT .50IN-13 SS 316 NYLOCK	SS 316/316L
5	3	0411-2029	SCREW, HH .5-13X2.5IN	SS 316/316L
6	6	0411-2693	WASHER, FLAT	SS 316/316L
7	12	0413-2114	WASHER, .521 X 1.49 X .125 NYLON	Nylon 6/10
8	1	0422-2800	PADLOCK HASP	PLATE, STL .188IN A36 (0715-2033)
9	1	0422-2801	PADLOCK HASP	PLATE, STL .188IN A36 (0715-2033)
10	3	0462-2579	BASE, HINGE	PLATE, STL .375IN A36 GRY (0715-2026)
11	3	0462-2591	HINGE,PANEL SIDE,BULKHEAD DOOR,FIXED	A36
12	2	0616-2075	MAIN FRAME	ANGLE, STL A36 HR 3X2X.25IN (0615-9587)
13	2	0616-2077	GASKET RETAINER/STIFFENER	BAR, STL A36 HR .25X1.5IN (0615-9598)
14	4	0616-2078	STOP, DOG STEEL .5 DIA ROUND X 1.375	STEEL
15	3	0616-2079	STIFFNER, ANGLE .25X1.5X1.5X24.44 A36	ANGLE, STL A36 HR 1.5X1.5X.25IN (0615-9503)
16	1	0716-2053	PANEL	PLATE, STL .25IN A36 GRY (0715-2027)
17	1	1212-2666L-203	GASKET	25 DURO NEOPRENE (0631-9854)



REVISIONS

SEE PAGE 1 FOR ALL REVISIONS

GENERAL NOTES

1. SEE PAGE 1.

CUSTOMER APPROVAL

IMPORTANT! THIS DRAWING SUPERSEDES ALL OTHER DOCUMENTS. BY SIGNING THIS APPROVAL YOU ACCEPT AND AGREE THAT THE DIMENSIONS AND DETAILS SHOWN ARE CORRECT AND PROPERLY FIT YOUR APPLICATION, REGARDLESS OF ANY DIFFERENCES BETWEEN THIS DRAWING AND ANY PRIOR CONTRACT SPECIFICATIONS. SHOULD YOU HAVE ANY QUESTIONS OR SEE ANY ERRORS, DO NOT SIGN THIS APPROVAL UNTIL THE DRAWING IS CORRECTED.

SIGN _____ DATE _____

UNLESS OTHERWISE SPECIFIED, DIMENSIONS ARE IN MILLIMETERS. TOLERANCES FOR ROUGH AND CLEAR OPENINGS ARE ±3mm (.125"). ALL OTHERS ARE:

	X	.X	.XX	ANGLES
METRIC	±2.5	±.8	±.25	±2°
IMPERIAL	±.1	±.03	±.010	±2°

BAR CODE _____ CAGE CODE 64747



COPYRIGHT 2016 ADVANTEC GLOBAL INNOVATIONS. ALL RIGHTS RESERVED. CONFIDENTIAL PROPERTY OF ADVANTEC GLOBAL INNOVATIONS. UNAUTHORIZED USE, REPRODUCTION OR DISTRIBUTION IS STRICTLY PROHIBITED. COPIES REMAIN THE PROPERTY OF ADVANTEC GLOBAL INNOVATIONS AND MUST BE RETURNED UPON REQUEST.

CLIENT FME

PROJECT TITLE STOCK 1212 BULKHEAD DOOR

DWG TITLE					QTY
SCALE 1:3	DRAWN MT	DATE 11/17/2016	CHECKED	DATE	SIZE B
S.O. NO	DWG NO 1212-2666L	SHEET 2 of 2	REV	13	