

10. FOR SPECIFIC INFORMATION CONTACT SALES.
9. COMPLETE ASSEMBLY WEIGHT W/ DECK RING, 36.5LBS
8. DOGGING PRESSURE FULLY ADJUSTABLE.
7. HANDLE POSITION TOPSIDE INDICATES WHETHER DOGGING MECHANISM IS IN OPEN OR CLOSED POSITION.
6. ALUMINUM ALLOY MECHANISM SHOWN.
5. FLUSH, WATERTIGHT CONSTRUCTION.
4. INTEGRAL TOPSIDE "T" HANDLE STANDARD, OTHER TOPSIDE ACTUATION AVAILABLE.
3. MILD STEEL COAMING CAN BE WELDED.
2. QUICK-ACTING, MECHANISM ENGAGES OR DISENGAGES IN QUARTER-TURN OF CENTER SPINDLE.
1. 24.2 x 15.3 CLEAR OPENING, ALL DIMENSIONS SHOWN SUBJECT TO CASTING VARIATION AND ARE REFERENCE ONLY.
- NOTES: UNLESS OTHERWISE SPECIFIED.

12		UPDATE ROUGH DIMS	8DEC17	ZJC	.X .XX .XXX ANGLES ±.1 ±.03 ±.010 ±2°	SPECIFICATIONS SUBJECT TO CHANGE WITHOUT NOTICE. PROJECTION	FREEMAN MARINE EQUIPMENT, INC. 28336 HUNTER CREEK ROAD GOLD BEACH, OR 97444 U.S.A. PHONE: 541-247-7078 FAX: 541-247-2114 www.freemanmarine.com	CLIENT: FREEMAN MARINE TITLE: HATCH, 2433, OVAL LIFT OUT, COMPR. SEAL, ALUM.	SIZE: D CAGE CODE: 64747 DRAWING NUMBER: 2433-0003	REV. 12 SHEET 1 OF 3
A		PRODUCTION RELEASE	11SEP13	ZJC						

8

7

6

5

4

3

2

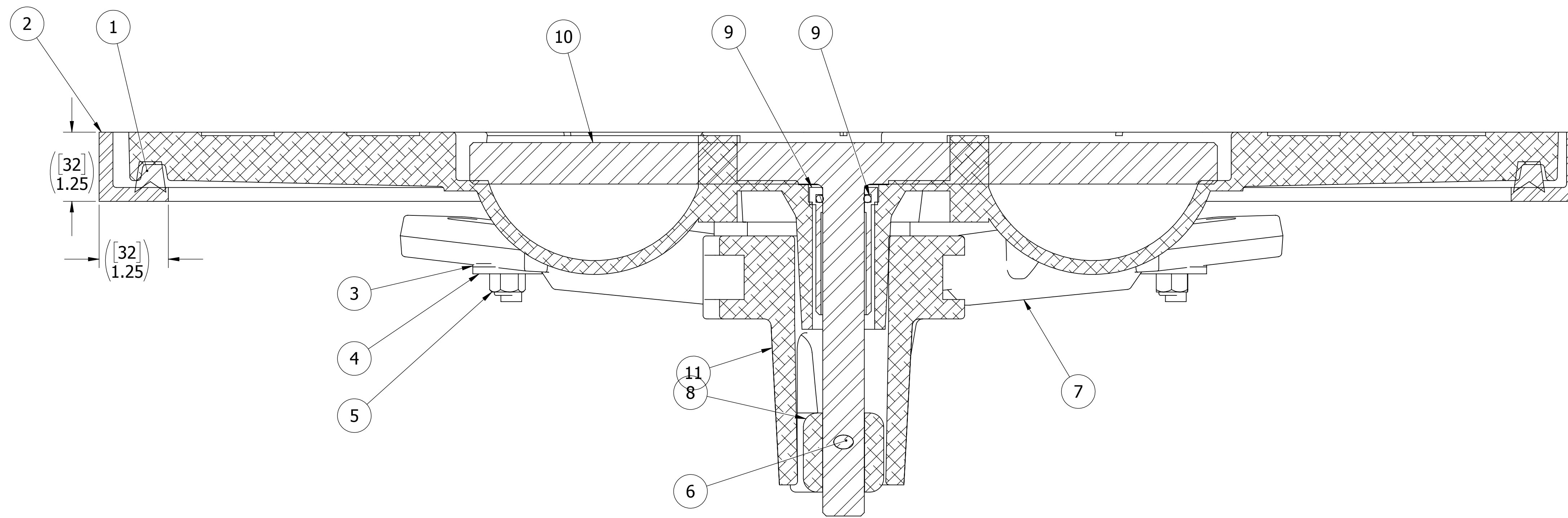
1

D

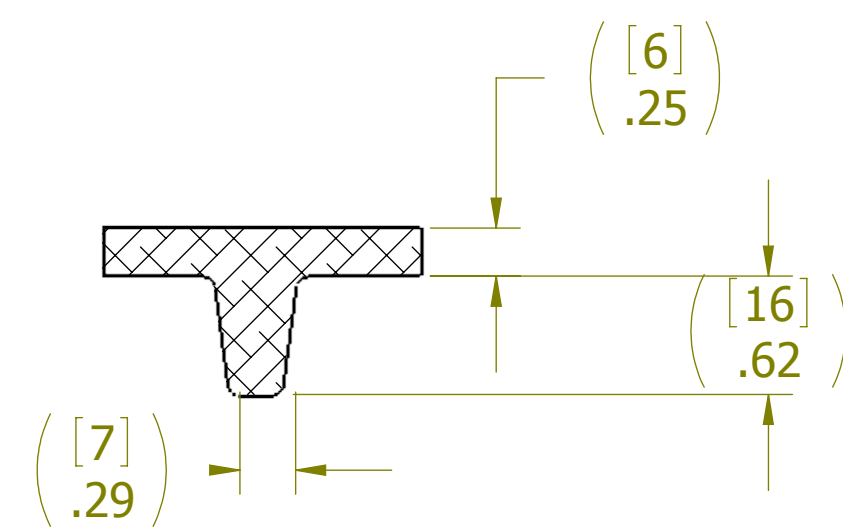
C

B

A



SECTION A-A



SECTION B-B
SCALE 1 : 1

ITEM NO.	QTY.	PART NUMBER	DESCRIPTION	MATERIAL
12	1	2434-3001	COVER: 1524	A356.0-F
11	1	0011-2002	HUB, AL, 4 HOLE	535.2-F
10	1	0021-2005	HANDLE, S/S, ROUND BAR	SS 304/304L ANLD
9	1	0031-2058	BUSHING ASSY, W/O-RING, NO SLEEVE	REF S.A. BOM
8	1	0112-2001	ACTUATOR, AL	6061 Alloy
7	4	0211-2004	DOG, LOCKING ARM 1524, AL	535.2-F
6	1	0411-2004	PIN KNURLED .25 X 2.25IN SS 316	316/316L
5	4	0411-2032	NUT .375IN NYLOCK	316/316L
4	4	0411-2033	WASHER .406 X 1.25 X .125IN SS 316	316/316L
3	4	0413-2005	WASHER, .406X1.25X.062 NYLON	PTFE (general)
2	1	2433-1002	COAMING 1524 COMPRESSION	A36
1	1	9801-2005	GASKET: 1524 (5.58 FT. OF 0631-9801)	Rubber

REV.	DESCRIPTION	DATE	DRAWN

SPECIFICATIONS SUBJECT TO CHANGE WITHOUT NOTICE.

PROJECTION

UNLESS OTHERWISE SPECIFIED DIMENSIONS ARE IN INCHES, TOLERANCES FOR ROUGH AND CLEAR OPENING ± .125 INCH. ALL OTHERS ARE:

.X	.XX	.XXX	ANGLES
±.1	±.03	±.010	±2°

DO NOT SCALE DRAWING

FREEMAN MARINE EQUIPMENT, INC.

CONFIDENTIAL PROPERTY OF FREEMAN MARINE EQUIPMENT INC. UNAUTHORIZED USE, COPYING OR DISTRIBUTION IS STRICTLY PROHIBITED. POSSESSOR OF THIS DOCUMENT AGREES TO THE FOREGOING AND SHALL RETURN THIS DOCUMENT UPON REQUEST.

© ALL RIGHTS RESERVED 2004

DRAWN: Z. CARPENTER DATE: 11SEP13
 CHECKED: S. MILLER DATE: 11SEP13
 ENGR: DATE:
 DESIGN ACTIVITY: DATE:
 CONTRACT NO.:

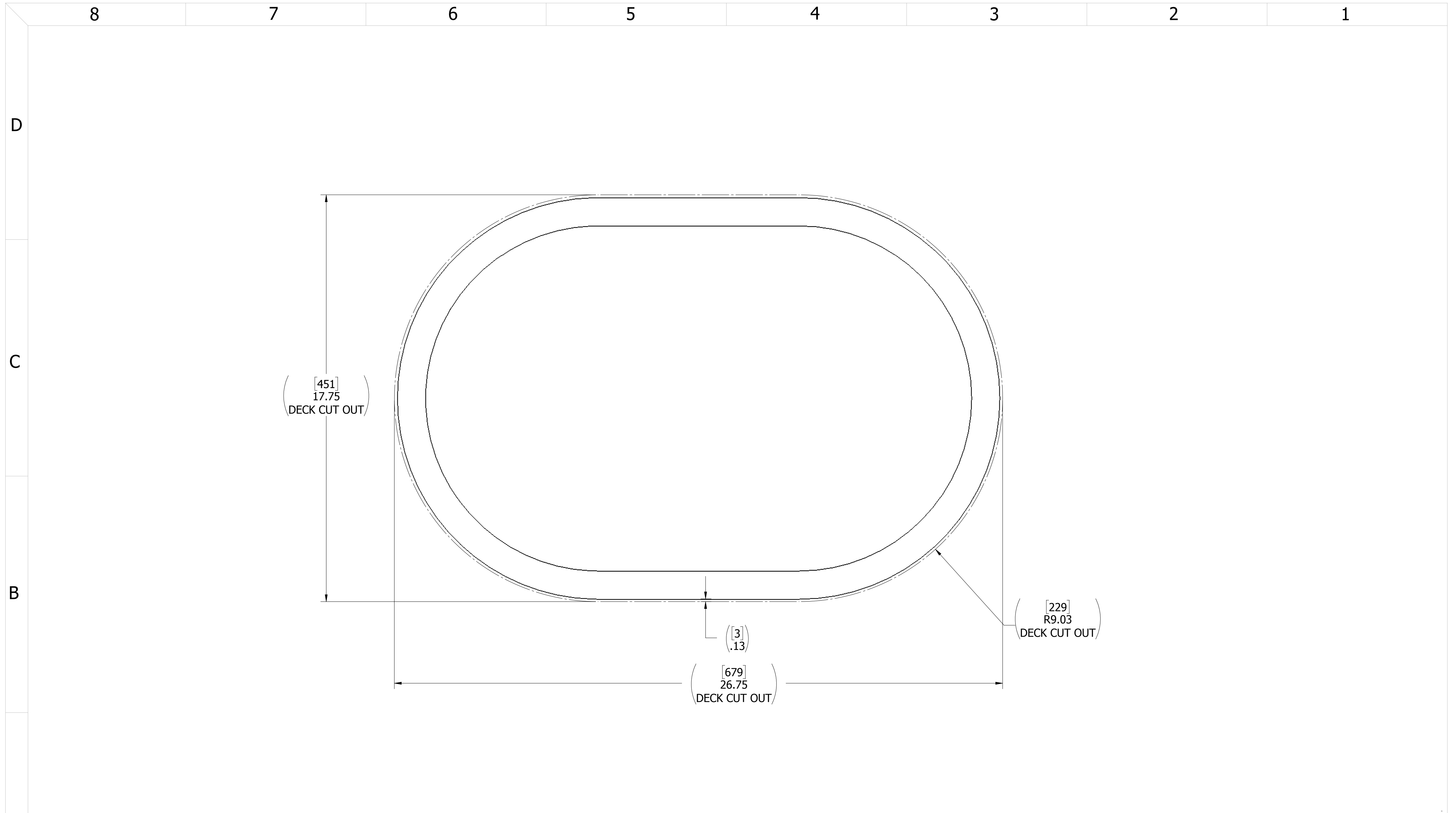
28336 HUNTER CREEK ROAD
 GOLD BEACH, OR 97444 U.S.A.
 PHONE: 541-247-7078 FAX: 541-247-2114
 www.freemanmarine.com

CLIENT: FREEMAN MARINE

TITLE: HATCH, 2433, OVAL
 LIFT OUT, COMPR. SEAL, ALUM.

SIZE	CAGE CODE	DRAWING NUMBER	REV.
D	64747	2433-0003	12

SCALE: 1:1.25 CALC WT. ACT. WT. SHEET 2 OF 3



- 3. FINISH: 125 RMS MAX.
 - 2. BREAK SHARP EDGES AND DEBURR.
 - 1. MATERIAL: Material <not specified>
- NOTES: UNLESS OTHERWISE SPECIFIED.

CUSTOMER APPROVAL

Signature: _____
 Date: _____

IMPORTANT! THIS DRAWING SUPERSEDES ALL OTHER DOCUMENTS. By signing this approval you accept and agree that the dimensions and details shown are correct and properly fit your application, regardless of any differences between this drawing and any contract specifications. Should you see any errors in the drawing, or have any questions, please contact your Freeman Marine sales engineer for clarification.

REV.	DESCRIPTION:	DATE:	DRAWN

SPECIFICATIONS SUBJECT TO CHANGE WITHOUT NOTICE.

PROJECTION

UNLESS OTHERWISE SPECIFIED DIMENSIONS ARE IN INCHES, TOLERANCES FOR ROUGH AND CLEAR OPENING ± .125 INCH. ALL OTHERS ARE:

.X	.XX	.XXX	ANGLES
±.1	±.03	±.010	±2°

DO NOT SCALE DRAWING

		28336 HUNTER CREEK ROAD GOLD BEACH, OR 97444 U.S.A. PHONE: 541-247-7078 FAX: 541-247-2114 www.freemanmarine.com	
		CLIENT:	FREEMAN MARINE
<small>CONFIDENTIAL PROPERTY OF FREEMAN MARINE EQUIPMENT, INC. UNAUTHORIZED USE, REPRODUCTION OR DISTRIBUTION IS STRICTLY PROHIBITED. ALL CODES REMAIN THE PROPERTY OF FREEMAN MARINE EQUIPMENT, INC. AND MUST BE RETURNED UPON REQUEST.</small>		TITLE: HATCH, 2433, OVAL LIFT OUT, COMPR. SEAL, ALUM.	
DRAWN: Z. CARPENTER CHECKED: S. MILLER ENGR: DESIGN ACTIVITY: CONTRACT NO.:	DATE: 11SEP13 DATE: 11SEP13 DATE:	SIZE: D CAGE CODE: 64747 SCALE: 1:2	DRAWING NUMBER: 2433-0003 REV. 12 ACT. WT. SHEET 3 OF 3