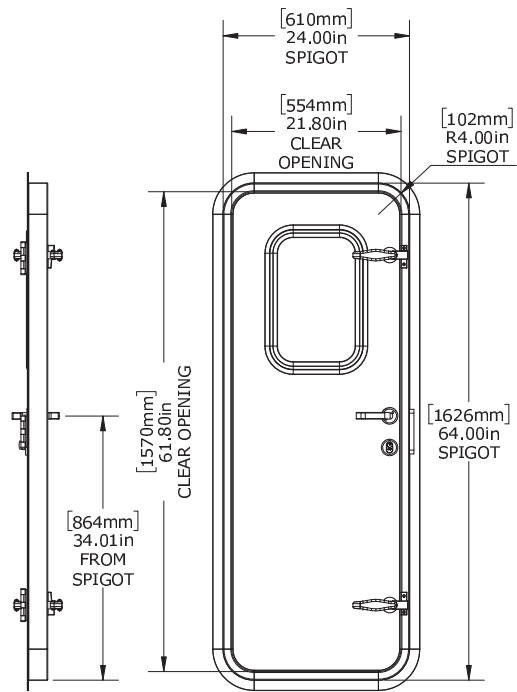
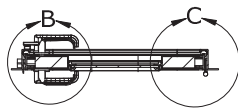


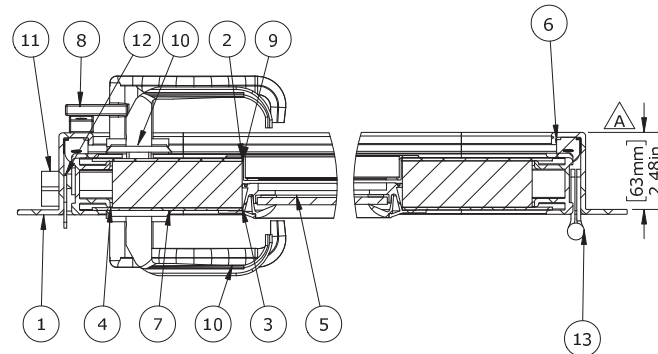
EXTERIOR VIEW



INTERIOR VIEW



SECTION A-A
SCALE 1 : 16



DETAIL B
SCALE 1 : 4

DETAIL C
SCALE 1 : 4

REVISIONS

| REV. | DESCRIPTION | BY | DATE |
|------|-----------------|-----|----------|
| A | ADDED DIMENSION | WDR | 4/4/2017 |

GENERAL NOTES

1. INSTALLATION: BOLT OR WELD-IN
2. BUILD TO SPIGOT.
3. GLASS SHALL BE 1/4" CLEAR TEMPERED.
4. WEATHERTIGHT DOOR CONSTRUCTION.
5. APPROX WEIGHT: 33.565kg (74 LBS.)
6. FINISH: BARE METAL
7. FOR ADDITIONAL INFORMATION CONTACT YOUR SALES REPRESENTATIVE OR PROJECT MANAGER.

CUSTOMER APPROVAL

IMPORTANT: THIS DRAWING SUPERSEDES ALL OTHER DOCUMENTS. BY SIGNING THIS APPROVAL YOU ACCEPT AND AGREE THAT THE DIMENSIONS AND DETAILS SHOWN ARE CORRECT AND PROPERLY FIT YOUR APPLICATION, REGARDLESS OF ANY DIFFERENCES BETWEEN THIS DRAWING AND ANY PRIOR CONTRACT SPECIFICATIONS. SHOULD YOU HAVE ANY QUESTIONS OR SEE ANY ERRORS, DO NOT SIGN THIS APPROVAL UNTIL THE DRAWING IS CORRECTED.

SIGN _____ DATE _____

UNLESS OTHERWISE SPECIFIED, DIMENSIONS ARE IN MILLIMETERS. TOLERANCES FOR ROUGH AND CLEAR OPENINGS ARE ±3mm (.125"). ALL OTHERS ARE:

| METRIC | X | .X | .XX | ANGLES |
|----------|------|------|-------|--------|
| | ±2.5 | ±.8 | ±.25 | ±2° |
| IMPERIAL | .X | .XX | .XXX | ANGLES |
| | ±.1 | ±.03 | ±.010 | ±2° |

BAR CODE _____ CAGE CODE _____

| ITEM NO. | PART NUMBER | DESCRIPTION | QTY. |
|----------|-------------|------------------------------|------|
| 1 | D11436 | MAIN FRAME | 1 |
| 2 | D11354 | INTERIOR SKIN | 1 |
| 3 | D11354 | EXTERIOR SKIN | 1 |
| 4 | D11435 | PANEL EDGE | 1 |
| 5 | D5 WINDOW | WINDOW | 1 |
| 6 | D10847 | GASKET | 1 |
| 7 | D11252 | DOG, HANDLE, NYLON, SET, 250 | 2 |
| 8 | D11129 | DOG WEDGE | 2 |
| 9 | D11481 | 1-1/2" POLYSTYRENE | 1 |
| 10 | D11234 | TRIOVING 5312 | 1 |
| 11 | D12015 | DEADBOLT RECESS | 1 |
| 12 | D10293 | 500 STRIKER PLATE | 1 |
| 13 | D10480 | 4 X 4 SLOTTED HINGE | 3 |



COPYRIGHT 2015 ADVANTEC GLOBAL INNOVATIONS. ALL RIGHTS RESERVED. CONFIDENTIAL PROPERTY OF ADVANTEC GLOBAL INNOVATIONS. UNAUTHORIZED USE, REPRODUCTION OR DISTRIBUTION IS STRICTLY PROHIBITED. COPIES REMAIN THE PROPERTY OF ADVANTEC GLOBAL INNOVATIONS AND MUST BE RETURNED UPON REQUEST.

CLIENT _____

PROJECT TITLE
WEATHERTIGHT HINGED DOOR

DWG TITLE
MODEL 24" X 64" RH QTY
1

SCALE DRAWN DATE CHECKED DATE SIZE
1:24 WDR 12/19/16 B

S.O. NO. DWG. NO. SHEET 15 OF 27 REV. A
250-STOCK DOOR