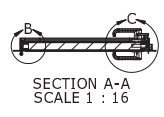


EXTERIOR VIEW

INTERIOR VIEW



SECTION A-A
SCALE 1 : 16

DETAIL B
SCALE 1 : 4

DETAIL C
SCALE 1 : 4

REVISIONS			
REV.	DESCRIPTION	BY	DATE
A	ADDED DIMENSION	WDR	4/2/2017

GENERAL NOTES

1. INSTALLATION BOLT OR WELD-IN
2. BUILT TO SPIGOT
3. GLASS SHALL BE 1/4" CLEAR TEMPERED.
4. WEATHERTIGHT DOOR CONSTRUCTION.
5. APPROX WEIGHT: 35 LBS (17.5 KG).
6. FINISH: BARE METAL.
7. FOR ADDITIONAL INFORMATION CONTACT YOUR SALES REPRESENTATIVE OR PROJECT MANAGER.

CUSTOMER APPROVAL

THIS DRAWING IS THE PROPERTY OF DSG AND IS NOT TO BE REPRODUCED OR TRANSMITTED IN ANY FORM OR BY ANY MEANS, ELECTRONIC OR MECHANICAL, INCLUDING PHOTOCOPYING, RECORDING, OR BY ANY INFORMATION STORAGE AND RETRIEVAL SYSTEM. ANY UNAUTHORIZED REPRODUCTION OR TRANSMISSION IS STRICTLY PROHIBITED. ALL RIGHTS ARE RESERVED.

UNLESS OTHERWISE SPECIFIED, DIMENSIONS ARE IN MILLIMETERS. TOLERANCES FOR HOLES AND CLEAR DIMENSIONS ARE SHOWN IN ALL ANGLES.

METRIC	±.5	±.3	±.25	±.2
IMPERIAL	±.1	±.03	±.010	±.02

999 Code Date Code

ITEM NO.	PART NUMBER	DESCRIPTION	QTY.
1	D11436	MAIN FRAME	1
2	D10847	GASKET	1
3	D11435	PANEL EDGE	1
4	D11354	EXTERIOR SKIN	1
5	D11354	INTERIOR SKIN	1
6	D5 WINDOW	WINDOW	1
7	D11481	1-1/2" POLYSTYRENE	1
8	D11234	TRIOVING 5312	1
9	D12015	DEADBOLT RECESS	1
10	D10293	500 STRIKER PLATE	1
11	D10480	4 X 4 SLOTTED HINGE	3
12	D11252	DOG, HANDLE, NYLON, SET, 250	2
13	D11129	DOG WEDGE	2



MODEL 26" X 64" LH

REV	DATE	BY	APP
1	12/19/16	WDR	A
4			A
27			A

250-STOCK DOOR