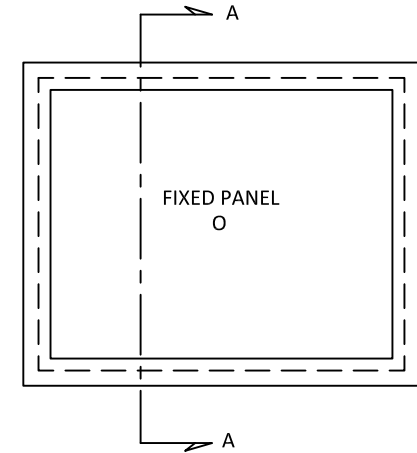
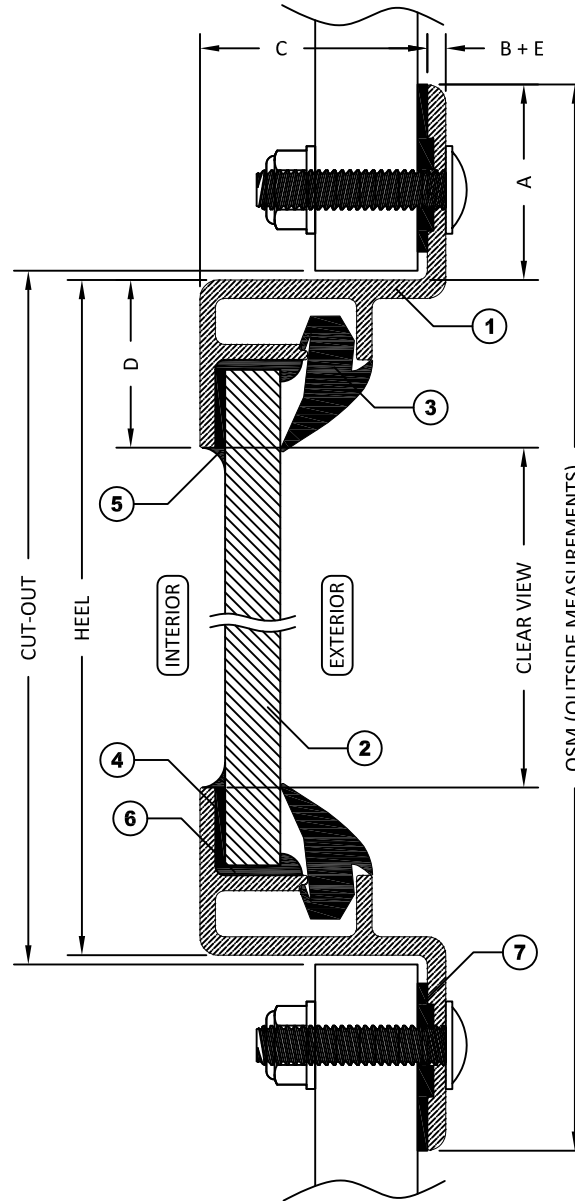


ITEMS			
ID	DESCRIPTION	MATERIAL	PART NUMBER
1	MOUNTING FRAME	BRONZE	MT - BR4306
2	GLAZING	GLASS 6mm (1/4") TO 12mm (1/2")	
3	FULCRUM GLAZING	SANTOPRENE	AD - VY3255
4	BUTYL TAPE		ADTA1/8X3/8B
5	SEALANT	SILICONE	
6	BACKFILL	URETHANE	
7	BEDDING COMPOUND	CUSTOMER TO SUPPLY	

STANDARD DIMENSIONS		
ID	DESCRIPTION	DIMENSION
A	FLANGE COVERAGE	32mm (1 1/4")
B	EXTERIOR PROTRUSION	3mm (1/8")
C	INTERIOR PROTRUSION	37mm (1 1/4")
D	SPIGOT TO CLEAR VIEW	27mm (1 1/16")
E	FLANGE THICKNESS	3mm (1/8")



SECTION A-A WITH BOLT-ON INSTALLATION

NOTES:

- GENERAL HEEL TOLERANCE +0/-1/4" OVERALL
- AVAILABLE WITH MITERED CORNERS
- STANDARD MOUNTING HOLES ARE 1/4" ON 6" NOMINAL CENTERS

DRAWING NUMBER

B100F

DIAMOND SEA GLAZE MANUFACTURING LTD.
26995 GLOUCESTER WAY, LANGLEY B.C.
CANADA V4W 3Y3
TOLL FREE: 1-800-770-0455
PHONE: 604-607-0091
FAX: 604-607-0092

SCALE

NTS

BY

LD



ITEM NAME

B100F

REVISION

1

ITEM DESCRIPTION

FIXED WINDOW

ALL DRAWINGS AND ANY ASSOCIATED INFORMATION HEREON CONTAIN PROPRIETARY AND/OR CONFIDENTIAL INFORMATION, AND SHALL NOT BE REPRODUCED, DISCLOSED OR SUBMITTED TO ANY THIRD PARTY WITHOUT PRIOR CONSENT FROM DIAMOND SEA GLAZE MANUFACTURING LTD.