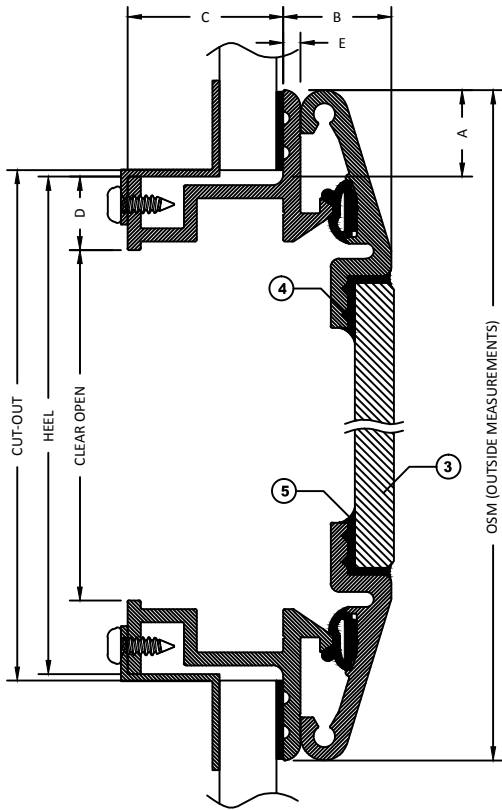
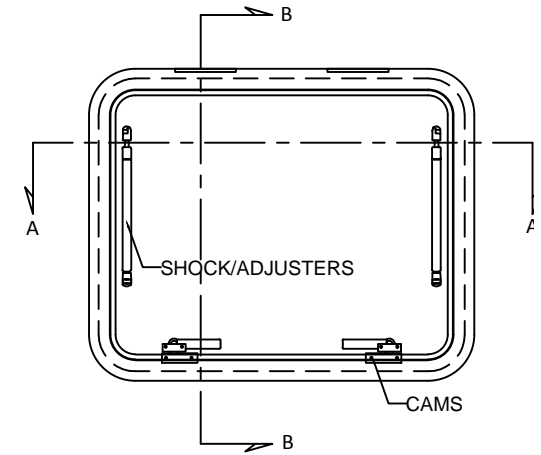


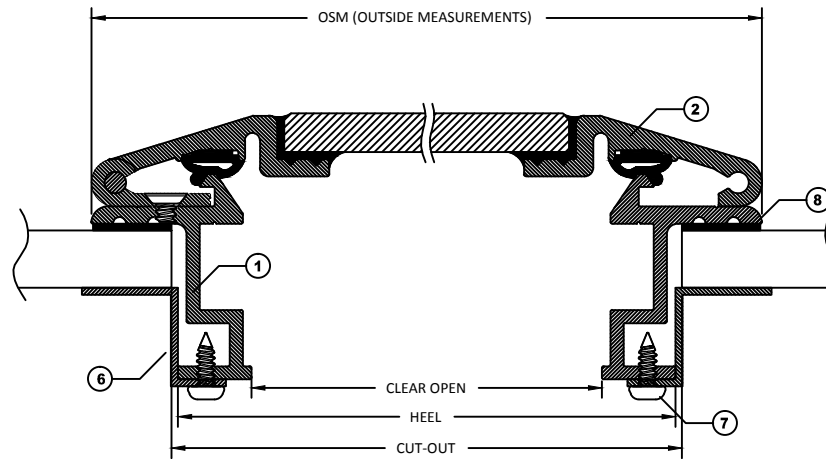
OPTIONAL BOLT-ON INSTALLATION

ITEMS			
ID	DESCRIPTION	MATERIAL	PART NUMBER
1	MOUNTING FRAME	6063 ALUMINUM	MT - EX22365
2	INSERT	6063 ALUMINUM	MT - EX22366
3	GLAZING	GLASS 6mm (1/4") TO 13mm (1/2")	
4	BUTYL TAPE	BUTYL	ADTA1/8X3/8B
5	SEALANT	SILICONE	
6	TRIM RING	6063 ALUMINUM	
7	TRIM SCREWS	S/S	
8	BEDDING COMPOUND	CUSTOMER TO SUPPLY	



SECTION B-B WITH CLAMP IN INSTALLATION

STANDARD DIMENSIONS		
ID	DESCRIPTION	DIMENSION
A	FLANGE COVERAGE	20mm (7/8")
B	EXTERIOR PROTRUSION	25mm (1")
C	INTERIOR PROTRUSION	36mm (1 7/16")
D	SPIGOT TO CLEAR OPEN	17 mm (11/16")
E	FLANGE THICKNESS	4mm (3/16")



SECTION A-A WITH CLAMP IN INSTALLATION

NOTES:

- GENERAL HEEL TOLERANCE +0/-1/4" OVERALL
- AVAILABLE WITH 3" (76.2MM) OR MITERED CORNERS
- STANDARD MOUNTING HOLES ARE 3/16" WITH #10 COUNTERSUNK ON 6" NOMINAL CENTERS

DRAWING NUMBER

H200

DIAMOND SEA GLAZE MANUFACTURING LTD.
26995 GLOUCESTER WAY, LANGLEY B.C.
CANADA V4W 3Y3
TOLL FREE: 1-800-770-0455
PHONE: 604-607-0091
FAX: 604-607-0092

SCALE

NTS

BY

LD/RH



Diamond Sea Glaze

Crystal Clear. Rock Solid.

ITEM NAME

H200

REVISION

1

ITEM DESCRIPTION

HINGED OPENING HATCH

ALL DRAWINGS AND ANY ASSOCIATED INFORMATION HEREON CONTAIN PROPRIETARY AND/OR CONFIDENTIAL INFORMATION, AND SHALL NOT BE REPRODUCED, DISCLOSED OR SUBMITTED TO ANY THIRD PARTY WITHOUT PRIOR CONSENT FROM DIAMOND SEA GLAZE MANUFACTURING LTD.