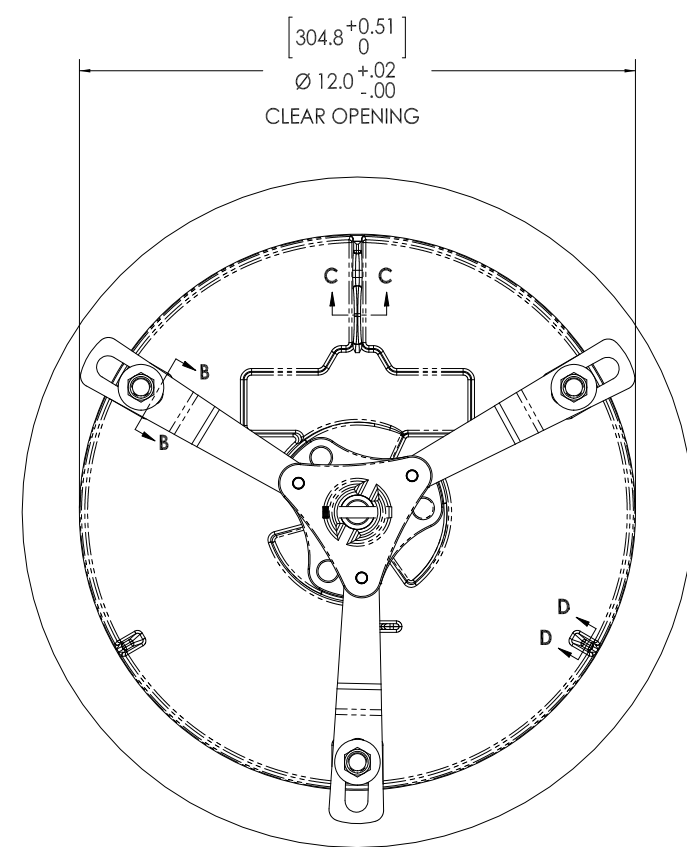
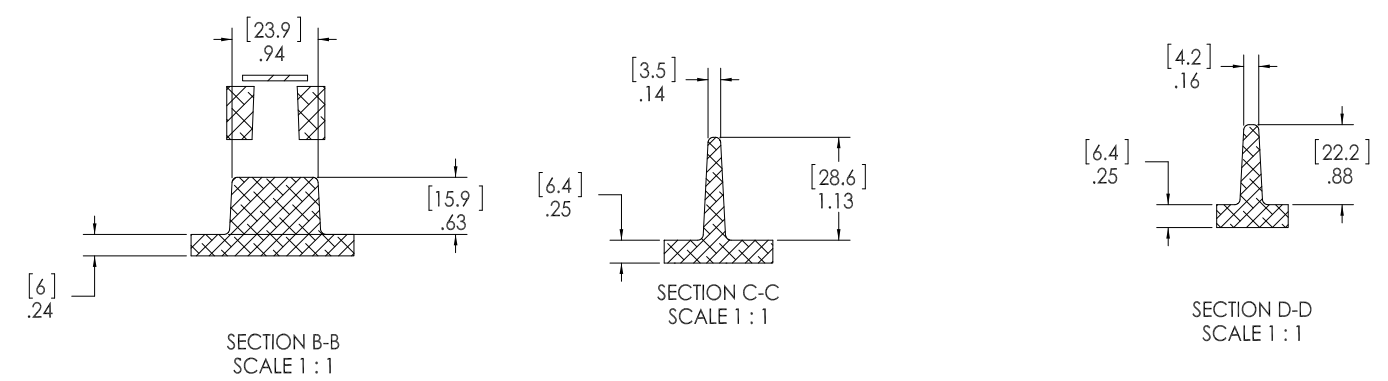
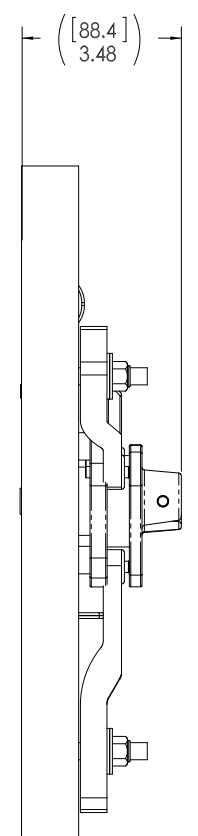
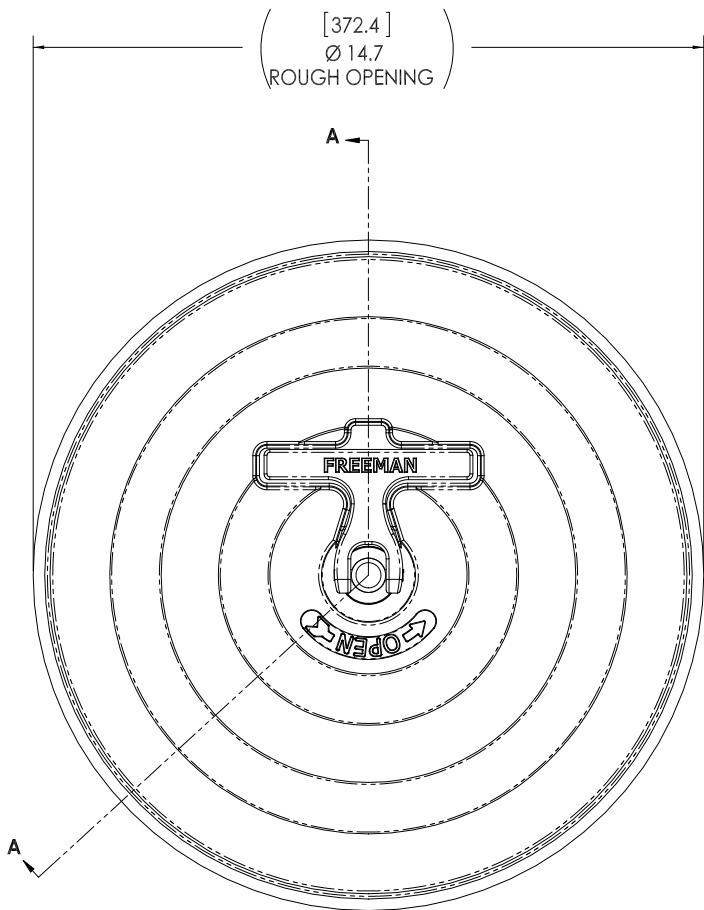


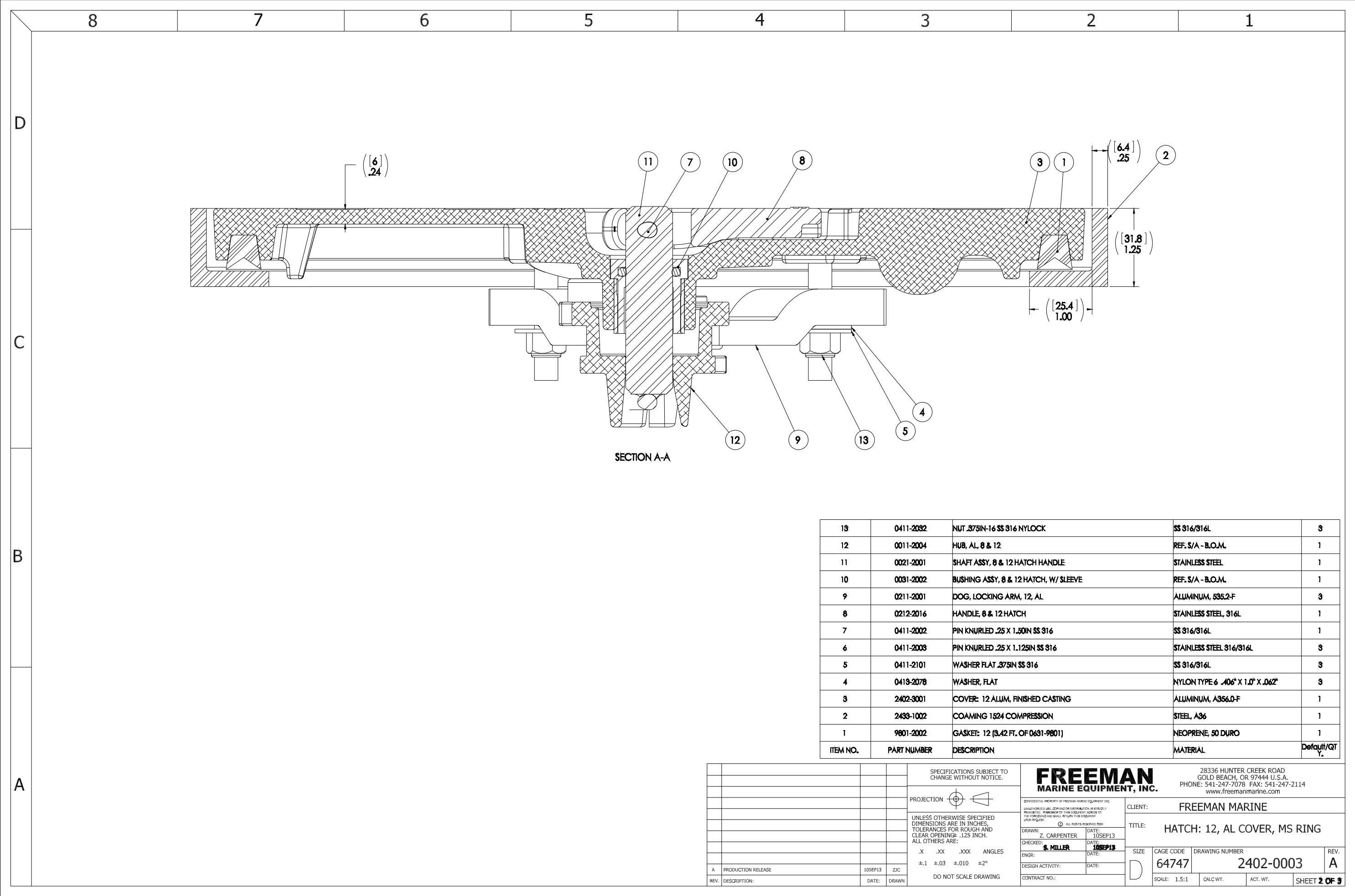
8 7 6 5 4 3 2 1

D
C
B
A



- 8. FOR SPECIFIC INFORMATION CONTACT SALES.
 - 7. COMPLETE ASSEMBLY WEIGHT W/DECK RING, 16LBS
 - 6. DOGGING PRESSURE FULLY ADJUSTABLE.
 - 5. ALUMINUM ALLOY MECHANISM SHOWN.
 - 4. FLUSH, WATERTIGHT CONSTRUCTION.
 - 3. MILD STEEL COAMING CAN BE WELDED.
 - 2. QUICK-ACTING, MECHANISM ENGAGES OR DISENGAGES IN QUARTER-TURN OF CENTER SPINDLE.
 - 1. ALL DIMENSIONS SHOWN SUBJECT TO CASTING VARIATION.
- NOTES: UNLESS OTHERWISE SPECIFIED.

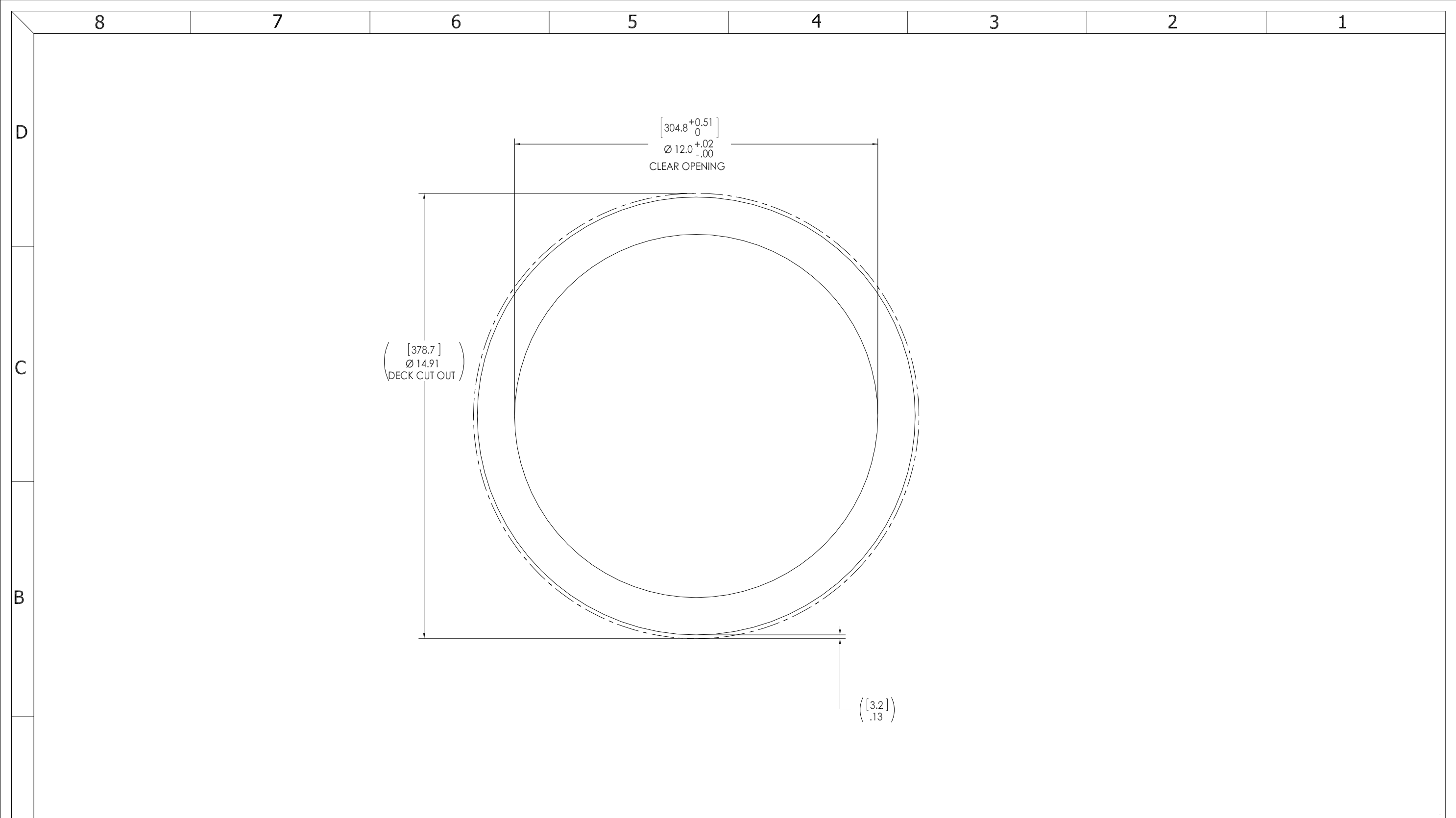
SPECIFICATIONS SUBJECT TO CHANGE WITHOUT NOTICE.		FREEMAN MARINE EQUIPMENT, INC. 28336 HUNTER CREEK ROAD GOLD BEACH, OR 97444 U.S.A. PHONE: 541-247-7078 FAX: 541-247-2114 www.freemanmarine.com	
PROJECTION		CLIENT: FREEMAN MARINE	
UNLESS OTHERWISE SPECIFIED DIMENSIONS ARE IN INCHES. TOLERANCES FOR ROUGH AND CLEAR OPENINGS: .125 INCH. ALL OTHERS ARE: .X .XX .XXX ANGLES ±.1 ±.03 ±.010 ±2°		TITLE: HATCH: 12, AL COVER, MS RING	
DO NOT SCALE DRAWING		SIZE: D CAGE CODE: 64747 DRAWING NUMBER: 2402-0003 REV. A	
A PRODUCTION RELEASE 10SEP13 ZIC		SCALE: 1:2 CALC. WT. ACT. WT. SHEET 1 OF 3	
REV. DESCRIPTION: DATE: DRAWN		CONTRACT NO.:	



SECTION A-A

ITEM NO.	PART NUMBER	DESCRIPTION	MATERIAL	Default/QT
13	0411-2082	NUT .375IN-16 SS 316 NYLOCK	SS 316/316L	3
12	0011-2004	HUB, AL, 8 & 12	REF. S/A - B.O.M.	1
11	0021-2001	SHAFT ASSY, 8 & 12 HATCH HANDLE	STAINLESS STEEL	1
10	0031-2002	BUSHING ASSY, 8 & 12 HATCH, W/ SLEEVE	REF. S/A - B.O.M.	1
9	0211-2001	DOG, LOCKING ARM, 12, AL	ALUMINUM, 5352-F	3
8	0212-2016	HANDLE, 8 & 12 HATCH	STAINLESS STEEL, 316L	1
7	0411-2002	PIN KNURLED .25 X 1.50IN SS 316	SS 316/316L	1
6	0411-2008	PIN KNURLED .25 X 1.125IN SS 316	STAINLESS STEEL 316/316L	3
5	0411-2101	WASHER FLAT .375IN SS 316	SS 316/316L	3
4	0419-2078	WASHER, FLAT	NYLON TYPE 6 .406" X 1.0" X .062"	3
3	2402-3001	COVER: 12 ALUM, FINISHED CASTING	ALUMINUM, A356.0-F	1
2	2433-1002	COAMING 1524 COMPRESSION	STEEL, A36	1
1	9801-2002	GASKET: 12 (3.42 FT. OF 0631-9801)	NEOPRENE, 50 DURO	1

SPECIFICATIONS SUBJECT TO CHANGE WITHOUT NOTICE.		FREEMAN MARINE EQUIPMENT, INC. 28336 HUNTER CREEK ROAD GOLD BEACH, OR 97444 U.S.A. PHONE: 541-247-7078 FAX: 541-247-2114 www.freemanmarine.com	
PROJECTION		CLIENT: FREEMAN MARINE	
UNLESS OTHERWISE SPECIFIED DIMENSIONS ARE IN INCHES. TOLERANCES FOR ROUGH AND CLEAR OPENINGS: .125 INCH. ALL OTHERS ARE: .X .XX .XXX ANGLES ±.1 ±.03 ±.010 ±2°		TITLE: HATCH: 12, AL COVER, MS RING	
DO NOT SCALE DRAWING		CONTRACT NO.:	
A PRODUCTION RELEASE 10SEP13 ZIC		SIZE: D CAGE CODE: 64747 DRAWING NUMBER: 2402-0003 REV. A	
REV. DESCRIPTION: DATE: DRAWN		SCALE: 1.5:1 CALC. WT. ACT. WT. SHEET 2 OF 3	



- 3. FINISH: 125 RMS MAX.
- 2. BREAK SHARP EDGES AND DEBURR.
- 1. MATERIAL: ALUMINUMREF. S/A - B.O.M.

NOTES: UNLESS OTHERWISE SPECIFIED.

CUSTOMER APPROVAL

Signature: _____
 Date: _____

IMPORTANT! THIS DRAWING SUPERSEDES ALL OTHER DOCUMENTS. By signing this approval you accept and agree that the dimensions and details shown are correct and properly fit your application, regardless of any differences between this drawing and any contract specifications. Should you see any errors in the drawing, or have any questions, please contact your Freeman Marine sales engineer for clarification.

REV.	DESCRIPTION	DATE	DRAWN
A	PRODUCTION RELEASE	10SEP13	ZIC

SPECIFICATIONS SUBJECT TO CHANGE WITHOUT NOTICE.

PROJECTION

UNLESS OTHERWISE SPECIFIED DIMENSIONS ARE IN INCHES. TOLERANCES FOR ROUGH AND CLEAR OPENINGS: .125 INCH. ALL OTHERS ARE:
 .X .XX .XXX ANGLES
 ±.1 ±.03 ±.010 ±2°

DO NOT SCALE DRAWING

FREEMAN MARINE EQUIPMENT, INC.		28336 HUNTER CREEK ROAD GOLD BEACH, OR 97444 U.S.A. PHONE: 541-247-7078 FAX: 541-247-2114 www.freemanmarine.com	
		CLIENT: FREEMAN MARINE	
DRAWN: Z. CARPENTER DATE: 10SEP13		TITLE: HATCH: 12, AL COVER, MS RING	
CHECKED: S. MILLER DATE: 10SEP13		SIZE: D	
ENGR: DATE:		CAGE CODE: 64747	
DESIGN ACTIVITY: DATE:		DRAWING NUMBER: 2402-0003	
CONTRACT NO.:		REV. A	
SCALE: 2:3		SHEET 3 OF 3	