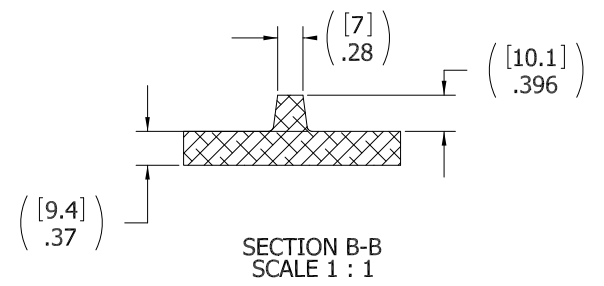


- 10. FOR SPECIFIC INFORMATION CONTACT SALES.
- 9. COMPLETE ASSEMBLY WEIGHT W/ DECK RING, 29LBS/ 13.2K.
- 8. DOGGING PRESSURE FULLY ADJUSTABLE.
- 7. HANDLE POSITION TOPSIDE INDICATES WHETHER DOGGING MECHANISM IS IN OPEN OR CLOSED POSITION.
- 6. ALUMINUM MECHANISM SHOWN.
- 5. FLUSH, WATERTIGHT CONSTRUCTION.
- 4. INTEGRAL TOPSIDE "T" HANDLE STANDARD, OTHER TOPSIDE ACTUATION AVAILABLE.
- 3. CAST ALUMINUM ALLOY FLANGE, FLANGE CAN BE DRILLED FOR BOLTED INSTALLATIONS OR WELDED TO ALUMINUM.
- 2. QUICK-ACTING, MECHANISM ENGAGES OR DISENGAGES IN QUARTER-TURN OF CENTER SPINDLE.
- 1. 15.1" / 383MM DIAMETER CLEAR OPENING, ALL DIMENSIONS SHOWN SUBJECT TO CASTING VARIATION AND ARE REFERENCE ONLY.

NOTES: UNLESS OTHERWISE SPECIFIED.



A

CUSTOMER APPROVAL

Signature: \_\_\_\_\_

Date: \_\_\_\_\_

IMPORTANT! THIS DRAWING SUPERSEDES ALL OTHER DOCUMENTS. By signing this approval you accept and agree that the dimensions and details shown are correct and properly fit your application, regardless of any differences between this drawing and any contract specifications. Should you see any errors in the drawing, or have any questions, please contact your Freeman Marine sales engineer for clarification.

SPECIFICATIONS SUBJECT TO CHANGE WITHOUT NOTICE.			
PROJECTION			
UNLESS OTHERWISE SPECIFIED DIMENSIONS ARE IN INCHES. TOLERANCES FOR ROUGH AND CLEAR OPENINGS: .125 INCH. ALL OTHERS ARE:			
.X	.XX	.XXX	ANGLES
±.1	±.03	±.010	±2°
DO NOT SCALE DRAWING			
REV.	DESCRIPTION:	DATE:	DRAWN
-	INITIAL RELEASE	26AUG05	MRS
A	UPDATE GEN NOTES & B.O.M.	05JUL11	GJM

**FREEMAN MARINE EQUIPMENT, INC.**

28336 HUNTER CREEK ROAD  
GOLD BEACH, OR 97444 U.S.A.  
PHONE: 541-247-7078 FAX: 541-247-2114  
www.freemanmarine.com

CONFIDENTIAL PROPERTY OF FREEMAN MARINE EQUIPMENT, INC. UNLESS OTHERWISE SPECIFIED OR OTHERWISE INDICATED, ALL RIGHTS RESERVED. PERMISSION TO REPRODUCE OR TRANSMIT IN ANY FORM OR BY ANY MEANS, WITHOUT PERMISSION OF THE COPYRIGHT OWNER IS PROHIBITED.

CLIENT: **FREEMAN MARINE**

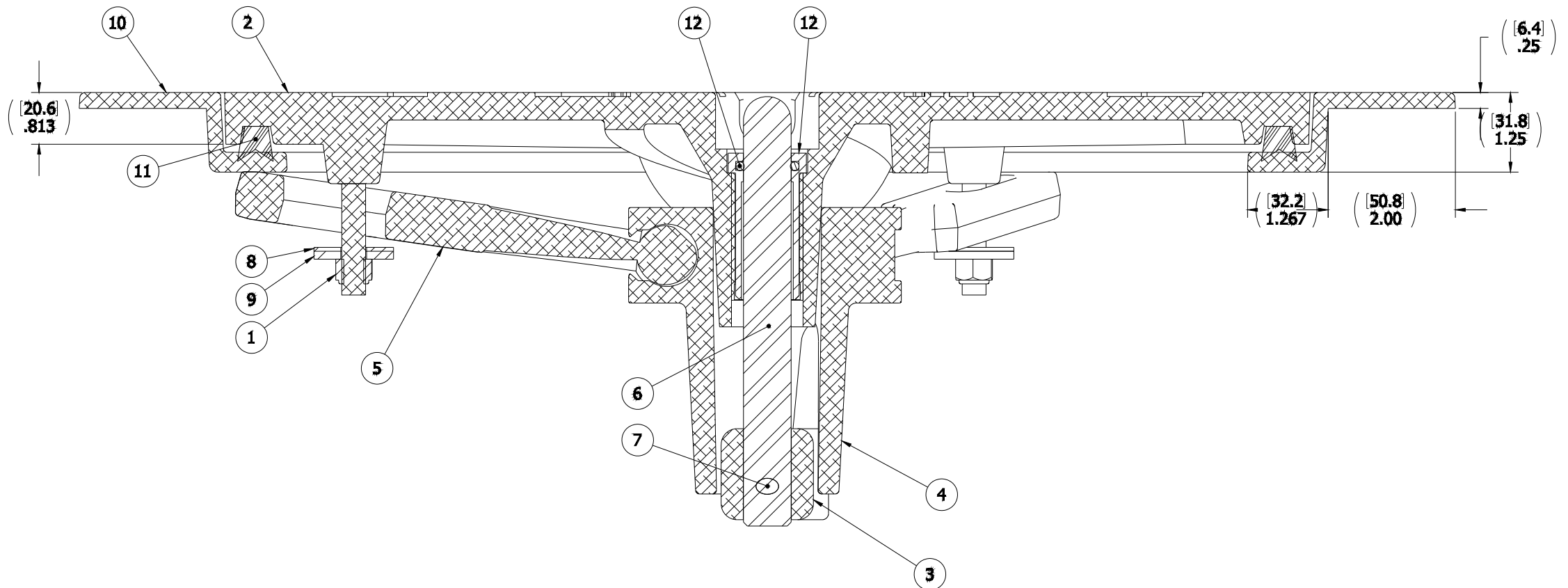
TITLE: **15" ROUND CAST HATCH ALUMINUM DECK RING**

SIZE: **D** CAGE CODE: **64747** DRAWING NUMBER: **2403-0002** REV. **A**

SCALE: 1:2 CALC. WT. ACT. WT. SHEET 1 OF 3

8 7 6 5 4 3 2 1

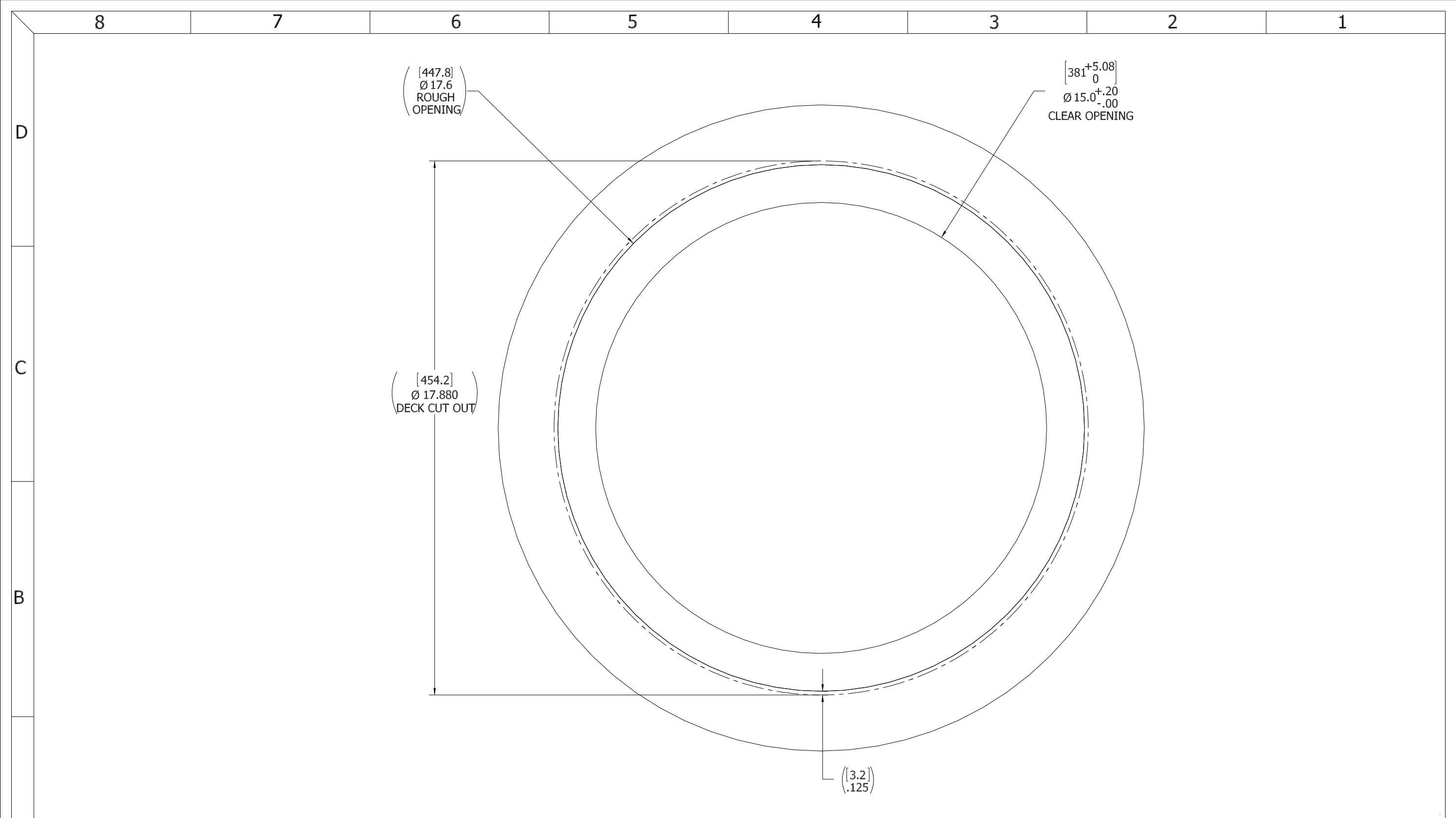
D  
C  
B  
A



SECTION A-A

ITEM NO.	QTY.	PART NUMBER	DESCRIPTION	MATERIAL
12	1	0031-2058	BUSHING ASSY, W/O-RING, NO SLEEVE	ACETRON/RUBBER
11	1	9801-2004	GASKET	50 DURO NEOPRENE, 0631-9801
10	1	2403-1002	RING: 15"	ALUMINUM, A356.0-F
9	3	0411-2033	WASHER, .406 X 1.25 X .125IN SS 316	SS 316/316L
8	3	0413-2005	WASHER, .406 X 1.250 X .062 NYLON	NYLON
7	1	0411-2004	PIN KNURLED .25 X 2.25IN SS 316	SS 316/316L
6	1	0021-2005	HANDLE, S/S, ROUND BAR	STAINLESS STEEL, 316
5	3	0211-2004	DOG, LOCKING ARM	ALUMINUM, 535.2-F
4	1	0011-2001	HUB, 3 HOLE	ALUMINUM, 535.2-F
3	1	0112-2001	ACTUATOR, AL	ALUMINUM, 535
2	1	2403-3002	COVER: 15 ROUND	ALUMINUM, A356.0-F
1	3	0411-2032	NUT .375IN-16 SS 316 NYLOCK	SS 316/316L

SPECIFICATIONS SUBJECT TO CHANGE WITHOUT NOTICE.		<b>FREEMAN MARINE EQUIPMENT, INC.</b> 28336 HUNTER CREEK ROAD GOLD BEACH, OR 97444 U.S.A. PHONE: 541-247-7078 FAX: 541-247-2114 www.freemanmarine.com	
PROJECTION		CLIENT: FREEMAN MARINE	
UNLESS OTHERWISE SPECIFIED DIMENSIONS ARE IN INCHES. TOLERANCES FOR ROUGH AND CLEAR OPENINGS: .125 INCH. ALL OTHERS ARE: .X .XX .XXX ANGLES ±.1 ±.03 ±.010 ±2°		TITLE: 15" ROUND CAST HATCH ALUMINUM DECK RING	
- INITIAL RELEASE 26AUG05 MRS		DRAWN: M STENDER DATE: 26AUG05 CHECKED: P CANCELLIERI DATE: 05AUG11 ENGR: DATE: DESIGN ACTIVITY: DATE: CONTRACT NO.:	
A UPDATE GEN NOTES & B.O.M. 05JUL11 GJM		SIZE: D CAGE CODE: 64747 DRAWING NUMBER: 2403-0002 REV. A	
REV. DESCRIPTION: DATE: DRAWN:		SCALE: 1:1 CALC. WT. ACT. WT. SHEET 2 OF 3	



- 3. FINISH: 125 RMS MAX.
- 2. BREAK SHARP EDGES AND DEBURR.
- 1. MATERIAL: REF. S/A - B.O.M.

NOTES: UNLESS OTHERWISE SPECIFIED.

**CUSTOMER APPROVAL**

Signature: \_\_\_\_\_  
 Date: \_\_\_\_\_

IMPORTANT! THIS DRAWING SUPERSEDES ALL OTHER DOCUMENTS. By signing this approval you accept and agree that the dimensions and details shown are correct and properly fit your application, regardless of any differences between this drawing and any contract specifications. Should you see any errors in the drawing, or have any questions, please contact your Freeman Marine sales engineer for clarification.

REV.	DESCRIPTION	DATE	DRAWN
-	INITIAL RELEASE	26AUG05	MRS
A	UPDATE GEN NOTES & B.O.M.	05JUL11	GJM

SPECIFICATIONS SUBJECT TO CHANGE WITHOUT NOTICE.

PROJECTION

UNLESS OTHERWISE SPECIFIED DIMENSIONS ARE IN INCHES. TOLERANCES FOR ROUGH AND CLEAR OPENINGS: .125 INCH. ALL OTHERS ARE:  
 .X .XX .XXX ANGLES  
 ±.1 ±.03 ±.010 ±2°

DO NOT SCALE DRAWING

 <small>CONFIDENTIAL PROPERTY OF FREEMAN MARINE EQUIPMENT, INC. UNLESS OTHERWISE SPECIFIED. ALL RIGHTS RESERVED. THIS DRAWING IS THE PROPERTY OF FREEMAN MARINE EQUIPMENT, INC. AND SHALL BE RETURNED UPON REQUEST.</small>		28336 HUNTER CREEK ROAD GOLD BEACH, OR 97444 U.S.A. PHONE: 541-247-7078 FAX: 541-247-2114 www.freemanmarine.com	
		CLIENT:	FREEMAN MARINE
DRAWN: M STENDER DATE: 26AUG05		TITLE: 15" ROUND CAST HATCH	
CHECKED: P CANCELLIERI DATE: 05JUL11		ALUMINUM DECK RING	
ENGR: DATE:		SIZE: D	REV. A
DESIGN ACTIVITY: DATE:		CAGE CODE: 64747	DRAWING NUMBER: 2403-0002
CONTRACT NO.:		SCALE: 2:3	SHEET 3 OF 3