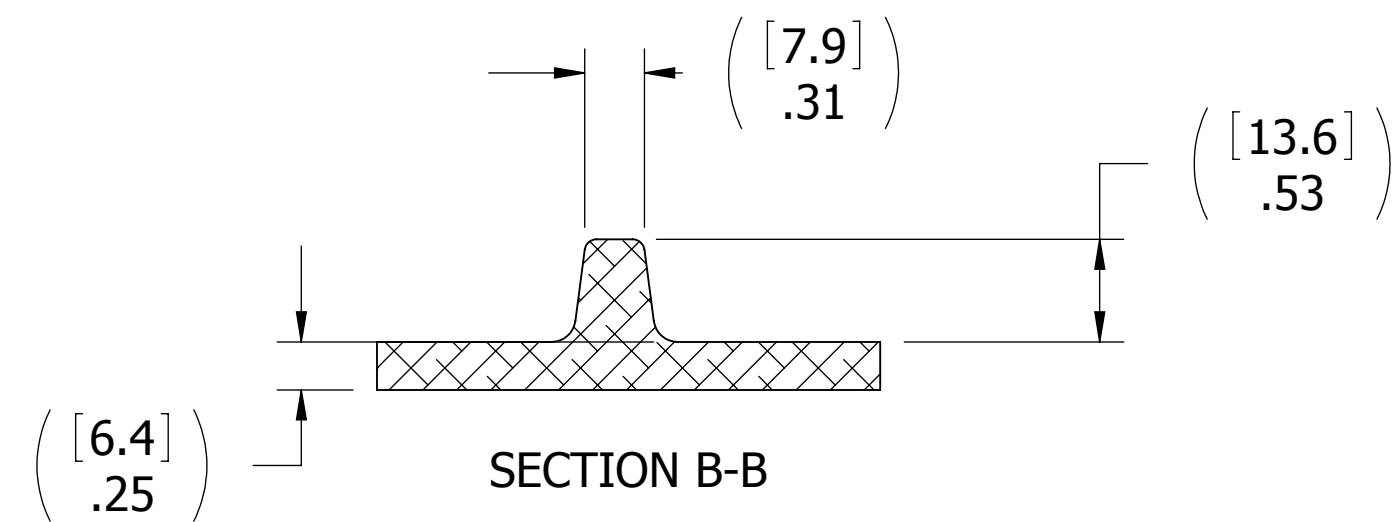


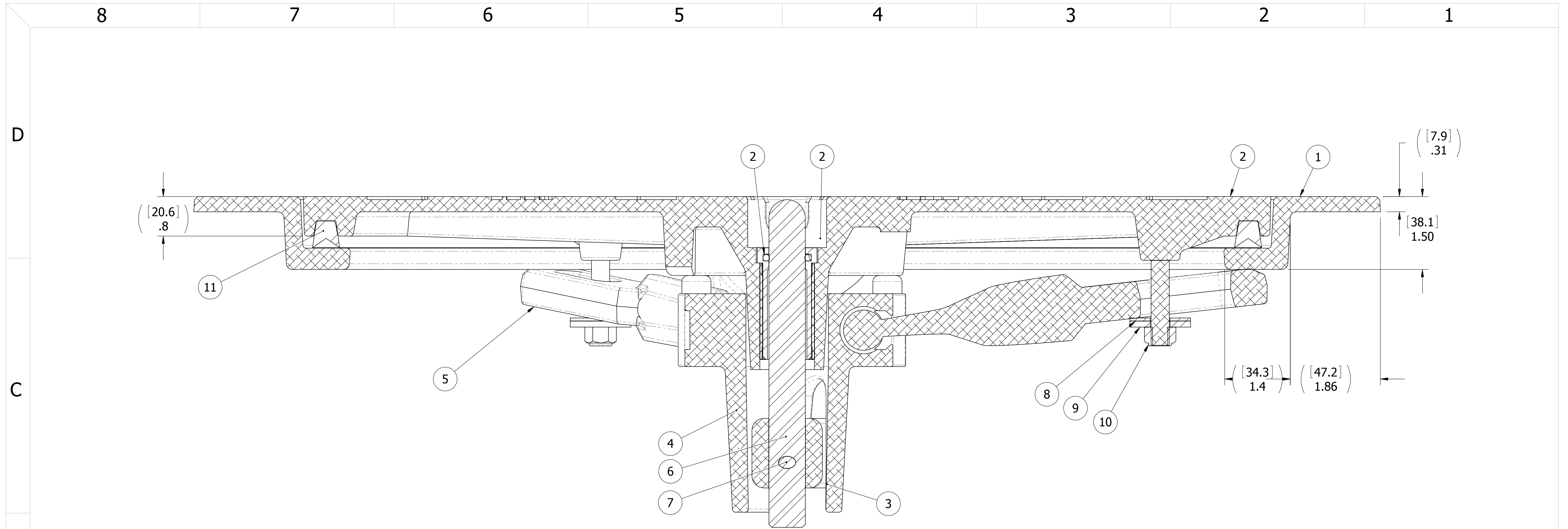
10. FOR SPECIFIC INFORMATION CONTACT SALES.
9. COMPLETE ASSEMBLY WEIGHT W/ DECK RING, 31.1LBS/ 14.1K.
8. DOGGING PRESSURE FULLY ADJUSTABLE.
7. HANDLE POSITION TOPSIDE INDICATES WHETHER DOGGING MECHANISM IS IN OPEN OR CLOSED POSITION.
6. ALUMINUM ALLOY MECHANISM SHOWN.
5. FLUSH, WATERTIGHT CONSTRUCTION.
4. INTEGRAL TOPSIDE "T" HANDLE STANDARD, OTHER TOPSIDE ACTUATION AVAILABLE.
3. CAST ALUMINUM ALLOY FLANGE, FLANGE CAN BE DRILLED FOR BOLTED INSTALLATIONS OR WELDED TO ALUMINUM.
2. QUICK-ACTING, MECHANISM ENGAGES OR DISENGAGES IN QUARTER-TURN OF CENTER SPINDLE.
1. 18.0"/ 457MM DIAMETER CLEAR OPENING, ALL DIMENSIONS SHOWN SUBJECT TO CASTING VARIATION AND ARE REFERENCE ONLY.

NOTES: UNLESS OTHERWISE SPECIFIED.



A

<p>CUSTOMER APPROVAL</p> <p>Signature: _____</p> <p>Date: _____</p> <p>IMPORTANT! THIS DRAWING SUPERSEDES ALL OTHER DOCUMENTS. By signing this approval you accept and agree that the dimensions and details shown are correct and properly fit your application, regardless of any differences between this drawing and any contract specifications. Should you see any errors in the drawing, or have any questions, please contact your Freeman Marine sales engineer for clarification.</p>		<p>UNLESS OTHERWISE SPECIFIED DIMENSIONS ARE IN INCHES, TOLERANCES FOR ROUGH AND CLEAR OPENING $\pm .125$ INCH. ALL OTHERS ARE:</p> <table border="1"> <tr> <td>.X</td> <td>.XX</td> <td>.XXX</td> <td>ANGLES</td> </tr> <tr> <td>$\pm .1$</td> <td>$\pm .03$</td> <td>$\pm .010$</td> <td>$\pm 2^\circ$</td> </tr> </table> <p>DO NOT SCALE DRAWING</p>	.X	.XX	.XXX	ANGLES	$\pm .1$	$\pm .03$	$\pm .010$	$\pm 2^\circ$	<p>SPECIFICATIONS SUBJECT TO CHANGE WITHOUT NOTICE.</p> <p>PROJECTION </p> <p>CONFIDENTIAL PROPERTY OF FREEMAN MARINE EQUIPMENT INC. UNAUTHORIZED USE, COPYING OR DISTRIBUTION IS STRICTLY PROHIBITED. POSSESSOR OF THIS DOCUMENT AGREES TO THE FOREGOING AND SHALL RETURN THIS DOCUMENT UPON REQUEST. © ALL RIGHTS RESERVED 2004</p> <p>DRAWN: A. VEDARTHAM DATE: 05/21/2007 CHECKED: P. CANCELLIERI DATE: 07/05/2011 ENGR: _____ DATE: _____ DESIGN ACTIVITY: _____ DATE: _____ CONTRACT NO.: _____</p>	<p>28336 HUNTER CREEK ROAD GOLD BEACH, OR 97444 U.S.A. PHONE: 541-247-7078 FAX: 541-247-2114 www.freemanmarine.com</p> <p>CLIENT: FREEMAN MARINE EQUIPMENT INC.</p> <p>TITLE: HATCH, 18 AL COVER AL RING</p> <table border="1"> <tr> <td>SIZE</td> <td>CAGE CODE</td> <td>DRAWING NUMBER</td> <td>REV.</td> </tr> <tr> <td>D</td> <td>64747</td> <td>2404-0002</td> <td>A</td> </tr> </table> <p>SCALE: 1:2 CALC. WT. ACT. WT. SHEET 1 OF 3</p>	SIZE	CAGE CODE	DRAWING NUMBER	REV.	D	64747	2404-0002	A
.X	.XX	.XXX	ANGLES																	
$\pm .1$	$\pm .03$	$\pm .010$	$\pm 2^\circ$																	
SIZE	CAGE CODE	DRAWING NUMBER	REV.																	
D	64747	2404-0002	A																	



SECTION A-A

ITEM NO.	DOGGED/QTY.	PART NUMBER	DESCRIPTION	MATERIAL
11	1	9801-2006	GASKET: 18 (4.5 FT. OF 0631-9801)	NEOPRENE
10	3	0411-2032	NUT .375IN NYLOCK	316/316L
9	3	0411-2033	WASHER .406 X 1.25 X .125IN SS 316	SS, 316
8	3	0413-2005	WASHER, .406 X 1.250 X .062 NYLON	NYLON
7	1	0411-2004	PIN KNURLED .25 X 2.25IN SS 316	SS, 316
6	1	0021-2005	HANDLE, S/S, ROUND BAR	SS, 316
5	3	0211-2005	DOG, LOCKING ARM 18 AL	ALUMINUM, 535.2-F
4	1	0011-2001	HUB, 3 HOLE	ALUMINUM, 535.2-F
3	1	0112-2001	ACTUATOR, AL	ALUMINUM, 535
2	1	2404-3001	COVER	ALUMINUM, A356
1	1	2404-1002	RING: MODEL 2404 18" ROUND HATCH	ALUMINUM, A356.0-F

REV.	DESCRIPTION	DATE	DRAWN
A	INITIAL RELEASE	07/05/2011	GJM
-	UPDATE GEN NOTES & B.O.M.	05/21/2007	AGV

SPECIFICATIONS SUBJECT TO CHANGE WITHOUT NOTICE.

PROJECTION

UNLESS OTHERWISE SPECIFIED DIMENSIONS ARE IN INCHES, TOLERANCES FOR ROUGH AND CLEAR OPENING ± .125 INCH. ALL OTHERS ARE:

.X	.XX	.XXX	ANGLES
±.1	±.03	±.010	±2°

DO NOT SCALE DRAWING

FREEMAN MARINE EQUIPMENT, INC.

28336 HUNTER CREEK ROAD
GOLD BEACH, OR 97444 U.S.A.
PHONE: 541-247-7078 FAX: 541-247-2114
www.freemanmarine.com

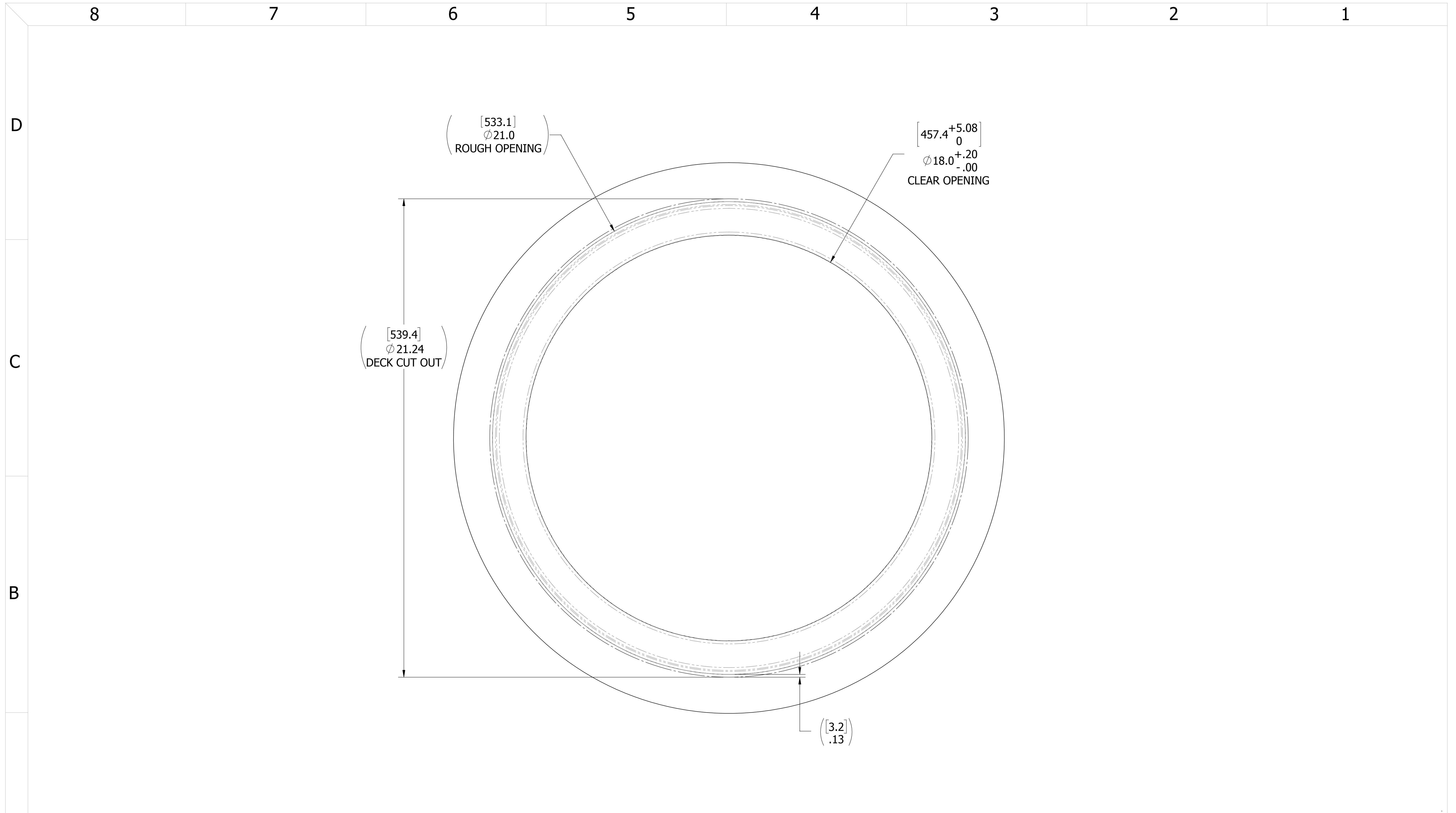
CONFIDENTIAL PROPERTY OF FREEMAN MARINE EQUIPMENT INC. UNAUTHORIZED USE, COPYING OR DISTRIBUTION IS STRICTLY PROHIBITED. POSSESSION OF THIS DOCUMENT AGREES TO THE FOREGOING AND SHALL RETURN THIS DOCUMENT UPON REQUEST. © ALL RIGHTS RESERVED 2004

CLIENT: FREEMAN MARINE EQUIPMENT INC.

TITLE: HATCH, 18 AL COVER AL RING

SIZE	CAGE CODE	DRAWING NUMBER	REV.
D	64747	2404-0002	A

SCALE: 1:1 CALC. WT. ACT. WT. SHEET 2 OF 3



- 3. FINISH: 125 RMS MAX.
 - 2. BREAK SHARP EDGES AND DEBURR.
 - 1. MATERIAL: REF. S/A - B.O.M.
- NOTES: UNLESS OTHERWISE SPECIFIED.

CUSTOMER APPROVAL

Signature: _____
Date: _____

IMPORTANT! THIS DRAWING SUPERSEDES ALL OTHER DOCUMENTS. By signing this approval you accept and agree that the dimensions and details shown are correct and properly fit your application, regardless of any differences between this drawing and any contract specifications. Should you see any errors in the drawing, or have any questions, please contact your Freeman Marine sales engineer for clarification.

REV.	DESCRIPTION:	DATE:	DRAWN
A	INITIAL RELEASE	07/05/2011	GJM
-	UPDATE GEN NOTES & B.O.M.	05/21/2007	AGV

SPECIFICATIONS SUBJECT TO CHANGE WITHOUT NOTICE.

PROJECTION

UNLESS OTHERWISE SPECIFIED DIMENSIONS ARE IN INCHES, TOLERANCES FOR ROUGH AND CLEAR OPENING ± .125 INCH. ALL OTHERS ARE:

.X	.XX	.XXX	ANGLES
±.1	±.03	±.010	±2°

DO NOT SCALE DRAWING

FREEMAN
MARINE EQUIPMENT, INC.

CONFIDENTIAL PROPERTY OF FREEMAN MARINE EQUIPMENT, INC. UNAUTHORIZED USE, REPRODUCTION OR DISTRIBUTION IS STRICTLY PROHIBITED. ALL CODES REMAIN THE PROPERTY OF FREEMAN MARINE EQUIPMENT, INC. AND MUST BE RETURNED UPON REQUEST. © ALL RIGHTS RESERVED 2012, FREEMAN MARINE EQUIPMENT, INC.

28336 HUNTER CREEK ROAD
GOLD BEACH, OR 97444 U.S.A.
PHONE: 541-247-7078 FAX: 541-247-2114
www.freemanmarine.com

DRAWN: A. VEDARTHAM		DATE: 05/21/2007	
CHECKED: P. CANCELLIERI		DATE: 07/05/2011	
ENGR:		DATE:	
DESIGN ACTIVITY:		DATE:	
CONTRACT NO.:		DATE:	

CLIENT: FREEMAN MARINE EQUIPMENT INC.			
TITLE: HATCH, 18 AL COVER AL RING			
SIZE: D	CAGE CODE: 64747	DRAWING NUMBER: 2404-0002	REV. A
SCALE: 1:2	CALC WT.	ACT. WT.	SHEET 3 OF 3