

- 9. FOR SPECIFIC INFORMATION CONTACT SALES.
- 8. COMPLETE ASSEMBLY WEIGHT
- 7. DOGGING PRESSURE FULLY ADJUSTABLE.
- 6. HANDLE POSITION TOPSIDE INDICATES WHETHER DOGGING MECHANISM IS IN OPEN OR CLOSED POSITION.
- 5. ALUMINUM ALLOY MECHANISM SHOWN.
- 4. INTEGRAL TOPSIDE "T" HANDLE STANDARD, OTHER TOPSIDE ACTUATION AVAILABLE.
- 3. CAST ALUMINUM COVER, MILD STEEL COAMING.
- 2. QUICK-ACTING, MECHANISM ENGAGES OR DISENGAGES IN QUARTER-TURN OF CENTER SPINDLE.
- 1. 18.2" DIAMETER CLEAR OPENING, ALL DIMENSIONS SHOWN SUBJECT TO CASTING VARIATION AND ARE REFERENCE ONLY.

NOTES: UNLESS OTHERWISE SPECIFIED.

CUSTOMER APPROVAL  
 Signature: \_\_\_\_\_  
 Date: \_\_\_\_\_  
 IMPORTANT! THIS DRAWING SUPERSEDES ALL OTHER DOCUMENTS. By signing this approval you accept and agree that the dimensions and details shown are correct and properly fit your application, regardless of any differences between this drawing and any contract specifications. Should you see any errors in the drawing, or have any questions, please contact your Freeman Marine sales engineer for clarification.

SPECIFICATIONS SUBJECT TO CHANGE WITHOUT NOTICE.	
PROJECTION	
UNLESS OTHERWISE SPECIFIED DIMENSIONS ARE IN INCHES. TOLERANCES FOR ROUGH AND CLEAR OPENINGS: .125 INCH. ALL OTHERS ARE: .X .XX .XXX ANGLES ±.1 ±.03 ±.010 ±2°	
DO NOT SCALE DRAWING	
REV. DESCRIPTION:	DATE: DRAWN
A PRODUCTION RELEASE	14JUN13 ZIC

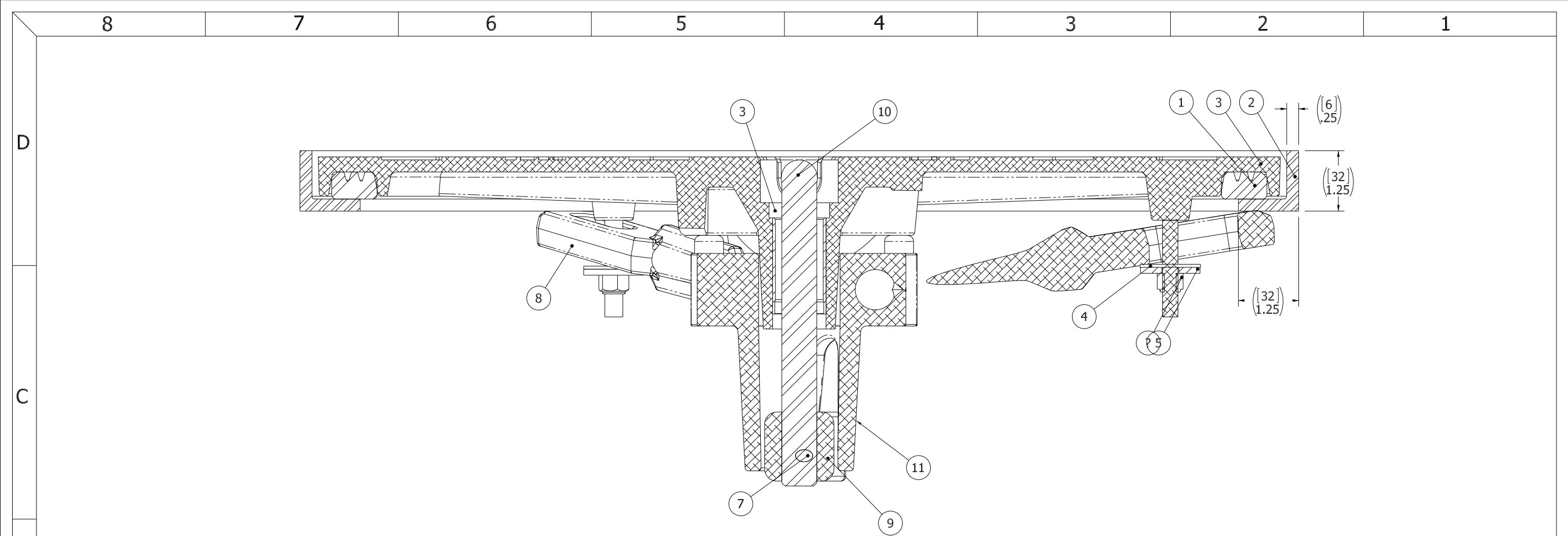
**FREEMAN MARINE EQUIPMENT, INC.**  
 28336 HUNTER CREEK ROAD  
 GOLD BEACH, OR 97444 U.S.A.  
 PHONE: 541-247-7078 FAX: 541-247-2114  
 www.freemanmarine.com

CLIENT: **FREEMAN MARINE**  
 TITLE: **HATCH: 18, AL COVER, MS RING**

CONTRACT NO.: \_\_\_\_\_

DRAWN: Z. CARPENTER	DATE: 14JUN13
CHECKED: D. YOES	DATE: 14JUN13
ENGR:	DATE:
DESIGN ACTIVITY:	DATE:

SIZE: <b>D</b>	CAGE CODE: <b>64747</b>	DRAWING NUMBER: <b>2404-0003</b>	REV. <b>A</b>
SCALE: 1:4	CALC.WT. 32 LBS	ACT. WT. 32 LBS	SHEET 1 OF 3



SECTION A-A  
SCALE 1 : 1

ITEM NO.	QTY.	PART NUMBER	DESCRIPTION	MATERIAL
11	1	0011-2001	HUB, 3 HOLE	ALUMINUM, 535.2-F
10	1	0021-2005	HANDLE, S/S, ROUND BAR	STAINLESS STEEL, 316
9	1	0112-2001	ACTUATOR, AL	ALUMINUM, 535
8	3	0211-2005	DOG, LOCKING ARM	ALUMINUM, 535.2-F
7	1	0411-2004	PIN KNURLED .25 X 2.25IN SS 316	SS 316/316L
6	3	0411-2032	NUT .375IN-16 SS 316 NYLOCK	SS 316/316L
5	3	0411-2033	WASHER .406 X 1.25 X .125IN SS 316	SS 316/316L
4	3	0413-2005	WASHER, .406 X 1.250 X .062 NYLON	NYLON
3	1	2404-0003-3001	COVER: 18K ALUM, FINISHED CASTING	ALUMINUM,
2	1	2433-1002	COAMING 1524 COMPRESSION	STEEL, A36
1	1	9813-2020	GASKET: 18K (LIFT-OUT,4.94 FT 0631-9813)	NEOPRENE

- 3. FINISH: 125 RMS MAX.
  - 2. BREAK SHARP EDGES AND DEBURR.
  - 1. MATERIAL: REF. S/A - B.O.M.
- NOTES: UNLESS OTHERWISE SPECIFIED.

CUSTOMER APPROVAL

Signature: \_\_\_\_\_  
Date: \_\_\_\_\_

IMPORTANT! THIS DRAWING SUPERSEDES ALL OTHER DOCUMENTS. By signing this approval you accept and agree that the dimensions and details shown are correct and properly fit your application, regardless of any differences between this drawing and any contract specifications. Should you see any errors in the drawing, or have any questions, please contact your Freeman Marine sales engineer for clarification.

REV.	DESCRIPTION	DATE	DRAWN
A	PRODUCTION RELEASE	14JUN13	ZIC

SPECIFICATIONS SUBJECT TO CHANGE WITHOUT NOTICE.

PROJECTION

UNLESS OTHERWISE SPECIFIED DIMENSIONS ARE IN INCHES. TOLERANCES FOR ROUGH AND CLEAR OPENINGS: .125 INCH. ALL OTHERS ARE:  
.X .XX .XXX ANGLES  
±.1 ±.03 ±.010 ±2°

DO NOT SCALE DRAWING

**FREEMAN MARINE EQUIPMENT, INC.**  
28336 HUNTER CREEK ROAD  
GOLD BEACH, OR 97444 U.S.A.  
PHONE: 541-247-7078 FAX: 541-247-2114  
www.freemanmarine.com

CONFIDENTIAL PROPERTY OF FREEMAN MARINE EQUIPMENT, INC. UNLESS OTHERWISE SPECIFIED. ALL RIGHTS RESERVED 2012. FREEMAN MARINE EQUIPMENT, INC.

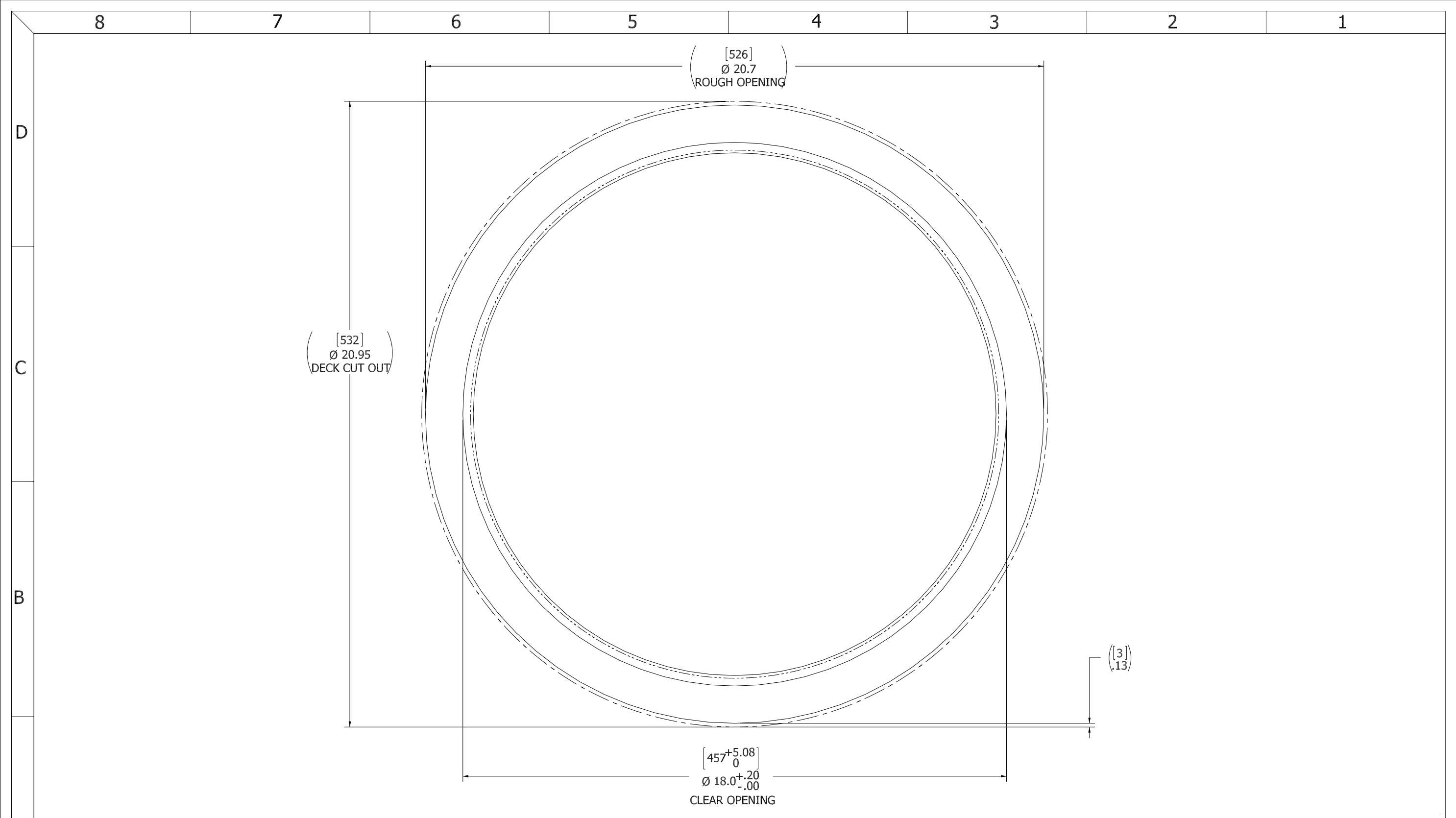
CLIENT: **FREEMAN MARINE**

TITLE: **HATCH: 18, AL COVER, MS RING**

DRAWN: Z. CARPENTER DATE: 14JUN13  
CHECKED: D. YOES DATE: 14JUN13  
ENGR: DATE:  
DESIGN ACTIVITY: DATE:  
CONTRACT NO.:

SIZE	CAGE CODE	DRAWING NUMBER	REV.
D	64747	2404-0003	A

SCALE: 1:4    CALC WT. 32 LBS    ACT. WT. 32 LBS    SHEET 2 OF 3



- 3. FINISH: 125 RMS MAX.
- 2. BREAK SHARP EDGES AND DEBURR.
- 1. MATERIAL: REF. S/A - B.O.M.

NOTES: UNLESS OTHERWISE SPECIFIED.

CUSTOMER APPROVAL

Signature: \_\_\_\_\_  
 Date: \_\_\_\_\_

IMPORTANT! THIS DRAWING SUPERSEDES ALL OTHER DOCUMENTS. By signing this approval you accept and agree that the dimensions and details shown are correct and properly fit your application, regardless of any differences between this drawing and any contract specifications. Should you see any errors in the drawing, or have any questions, please contact your Freeman Marine sales engineer for clarification.

REV.	DESCRIPTION	DATE	DRAWN
A	PRODUCTION RELEASE	14JUN13	ZIC

SPECIFICATIONS SUBJECT TO CHANGE WITHOUT NOTICE.

PROJECTION

UNLESS OTHERWISE SPECIFIED DIMENSIONS ARE IN INCHES. TOLERANCES FOR ROUGH AND CLEAR OPENINGS: .125 INCH. ALL OTHERS ARE:  
 .X .XX .XXX ANGLES  
 ±.1 ±.03 ±.010 ±2°

DO NOT SCALE DRAWING

<b>FREEMAN MARINE EQUIPMENT, INC.</b> <small>CONFIDENTIAL PROPERTY OF FREEMAN MARINE EQUIPMENT, INC. UNLESS OTHERWISE SPECIFIED. ALL RIGHTS RESERVED. THIS DRAWING IS THE PROPERTY OF FREEMAN MARINE EQUIPMENT, INC. AND SHALL BE RETURNED UPON REQUEST.</small>		28336 HUNTER CREEK ROAD GOLD BEACH, OR 97444 U.S.A. PHONE: 541-247-7078 FAX: 541-247-2114 www.freemanmarine.com	
		CLIENT:	FREEMAN MARINE
DRAWN: Z. CARPENTER		DATE:	14JUN13
CHECKED: D. YOES		DATE:	14JUN13
ENGR:		DATE:	
DESIGN ACTIVITY:		DATE:	
CONTRACT NO.:			
SIZE	CAGE CODE	DRAWING NUMBER	REV.
D	64747	2404-0003	A
SCALE: 2:3	CALC WT. 32 LBS	ACT. WT. 32 LBS	SHEET 3 OF 3