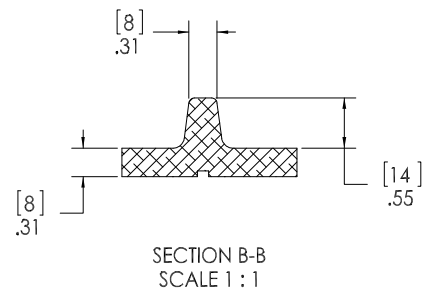
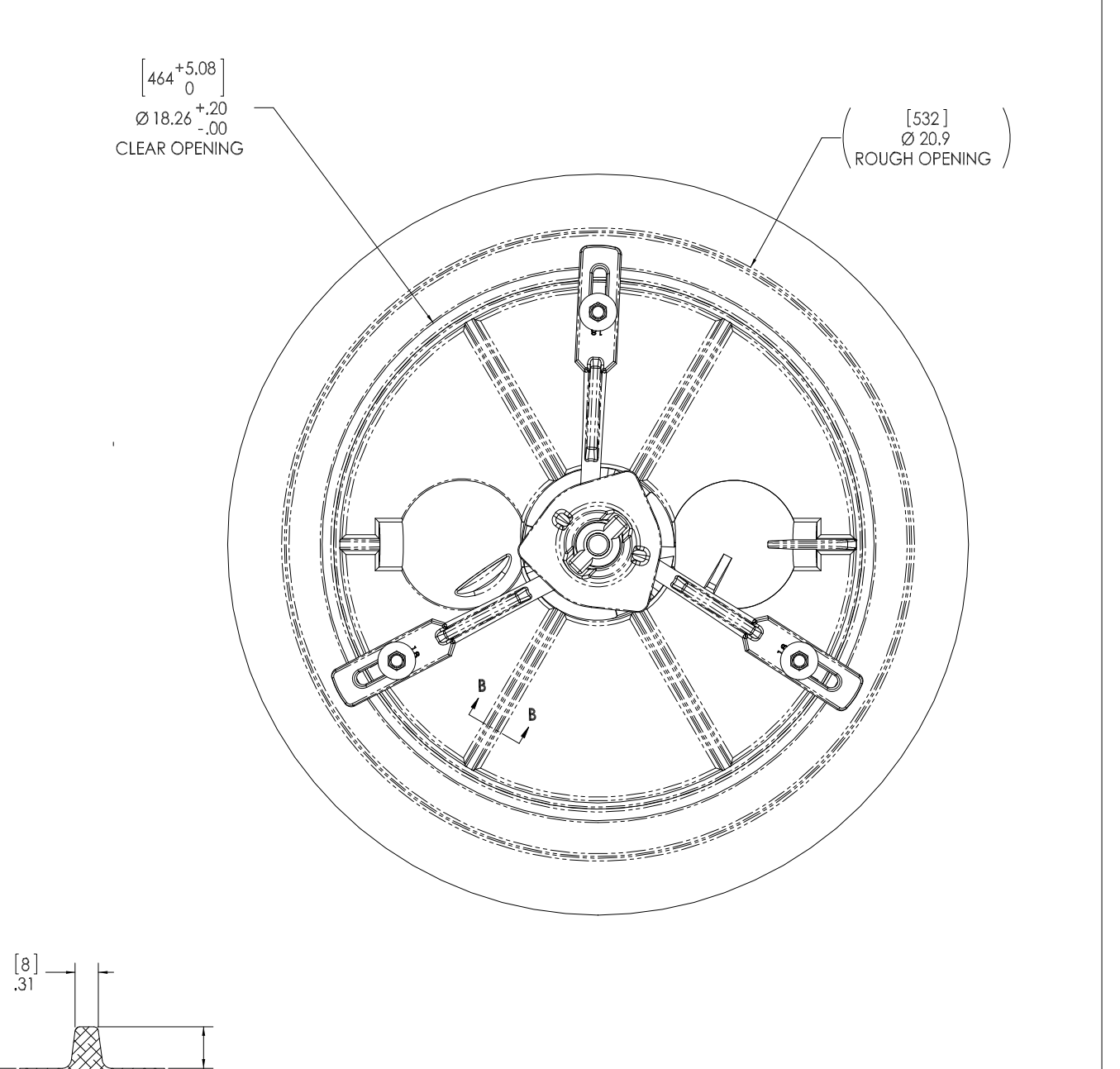
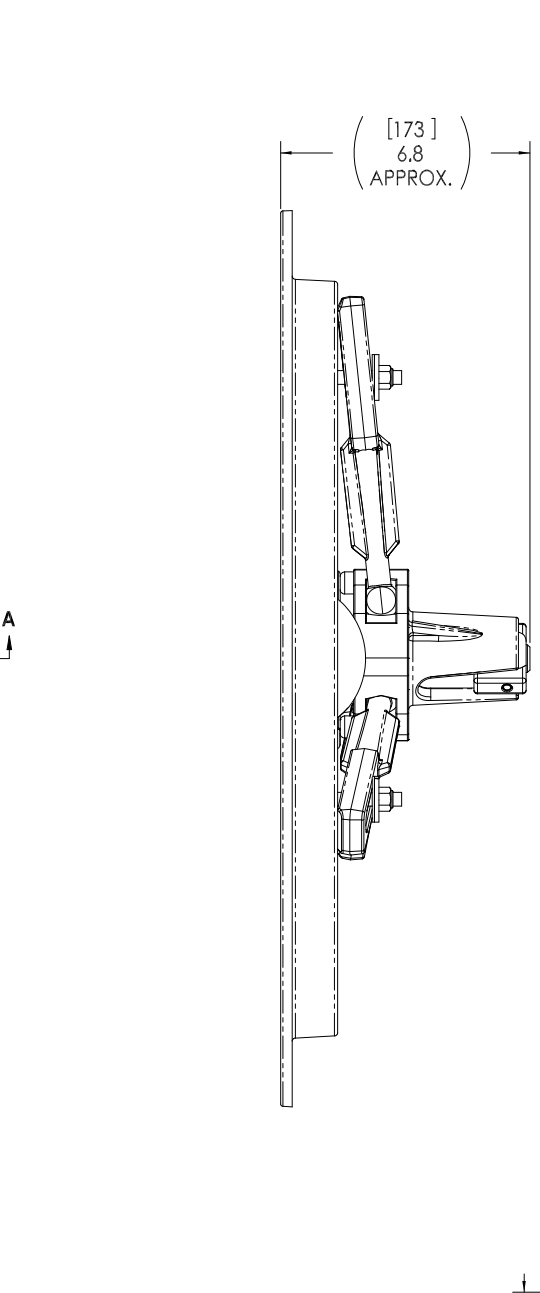
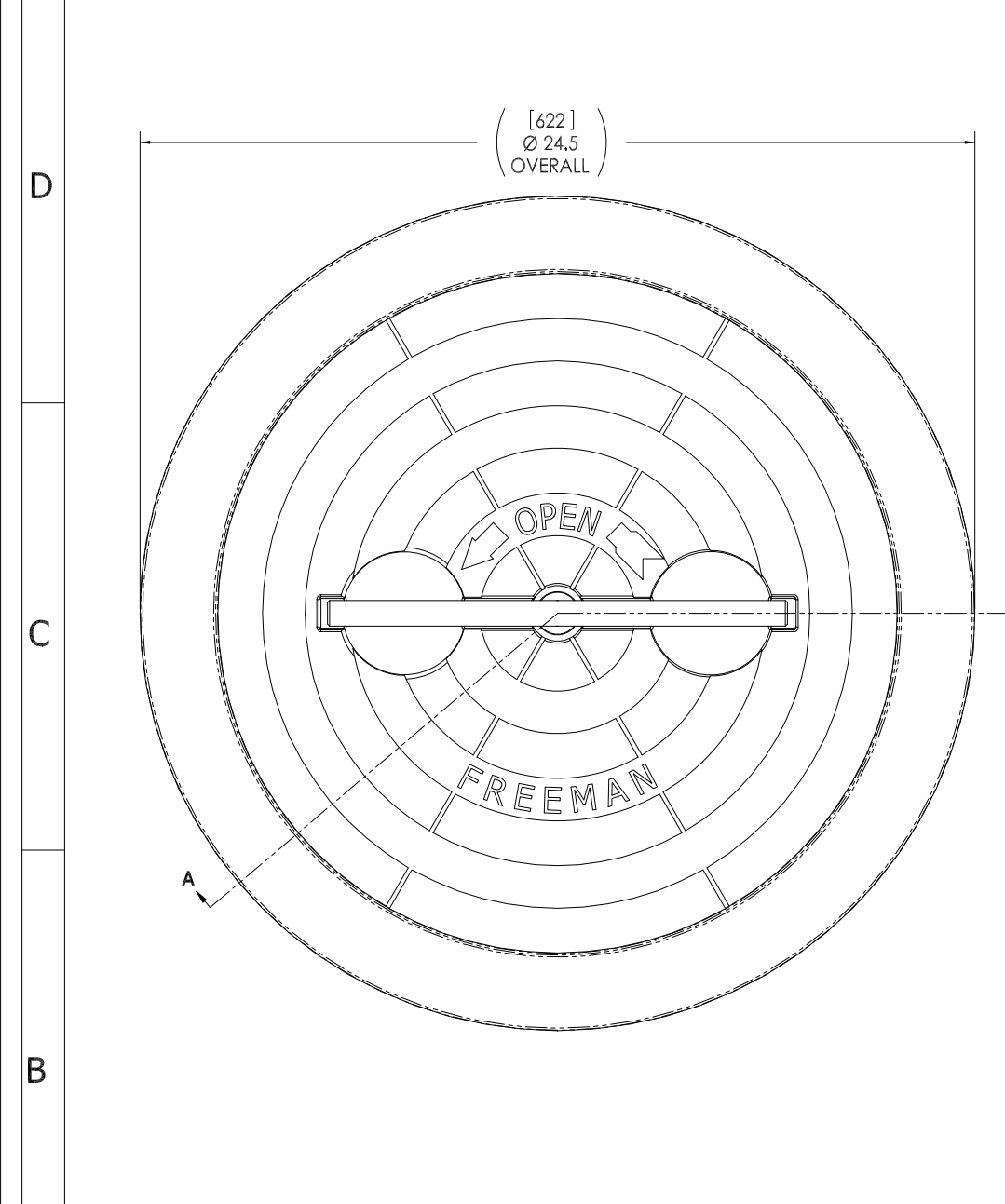


8 7 6 5 4 3 2 1



- 10. FOR SPECIFIC INFORMATION CONTACT SALES.
- 9. COMPLETE ASSEMBLY WEIGHT W/ DECK RING, 31.2LBS/ 14.2K.
- 8. DOGGING PRESSURE FULLY ADJUSTABLE.
- 7. HANDLE POSITION TOPSIDE INDICATES WHETHER DOGGING MECHANISM IS IN OPEN OR CLOSED POSITION.
- 6. ALUMINUM ALLOY MECHANISM SHOWN.
- 5. FLUSH, WATERTIGHT CONSTRUCTION.
- 4. INTEGRAL TOPSIDE "T" HANDLE STANDARD, OTHER TOPSIDE ACTUATION AVAILABLE.
- 3. CAST ALUMINUM ALLOY FLANGE, FLANGE CAN BE DRILLED FOR BOLTED INSTALLATIONS OR WELDED TO ALUMINUM.
- 2. QUICK-ACTING, MECHANISM ENGAGES OR DISENGAGES IN QUARTER-TURN OF CENTER SPINDLE.
- 1. 18.3"/ 464MM DIAMETER CLEAR OPENING, ALL DIMENSIONS SHOWN SUBJECT TO CASTING VARIATION AND ARE REFERENCE ONLY.

NOTES: UNLESS OTHERWISE SPECIFIED.

CUSTOMER APPROVAL

Signature: \_\_\_\_\_

Date: \_\_\_\_\_

IMPORTANT! THIS DRAWING SUPERSEDES ALL OTHER DOCUMENTS. By signing this approval you accept and agree that the dimensions and details shown are correct and properly fit your application, regardless of any differences between this drawing and any contract specifications. Should you see any errors in the drawing, or have any questions, please contact your Freeman Marine sales engineer for clarification.

| REV. | DESCRIPTION:            | DATE:   | DRAWN: |
|------|-------------------------|---------|--------|
| -    | INITIAL RELEASE         | 24JUL96 | MWF    |
| A    | UPDATED IN 3D           | 29NOV11 | GMJ    |
| B    | TOLERANCE MEETS AS CAST | 01AUG13 | BRC    |

SPECIFICATIONS SUBJECT TO CHANGE WITHOUT NOTICE.

PROJECTION

UNLESS OTHERWISE SPECIFIED DIMENSIONS ARE IN INCHES. TOLERANCES FOR ROUGH AND CLEAR OPENING: .125 INCH. ALL OTHERS ARE:

.X .XX .XXX ANGLES  
±.1 ±.03 ±.010 ±2°

DO NOT SCALE DRAWING

|  |           |  |                                  |
|--|-----------|--|----------------------------------|
|  |           | 28336 HUNTER CREEK ROAD<br>GOLD BEACH, OR 97444 U.S.A.<br>PHONE: 541-247-7078 FAX: 541-247-2114<br>www.freemanmarine.com |                                  |
|  |           | CLIENT:  | FREEMAN MARINE                   |
| DRAWN: G MACEACHERN DATE: 29NOV11<br>CHECKED: S SNYDER DATE: 29NOV11<br>ENGR: DATE:<br>DESIGN ACTIVITY: DATE:<br>CONTRACT NO.: |           | TITLE:   | HATCH: 18K,<br>AL COVER, AL RING |
| SIZE   | D         | CAGE CODE  | 64747                            |
| DRAWING NUMBER   | 2405-0002 | REV.   | B                                |
| SCALE: 1:2.5   | CALC.WT.  | ACT. WT.   | SHEET 1 OF 3                     |

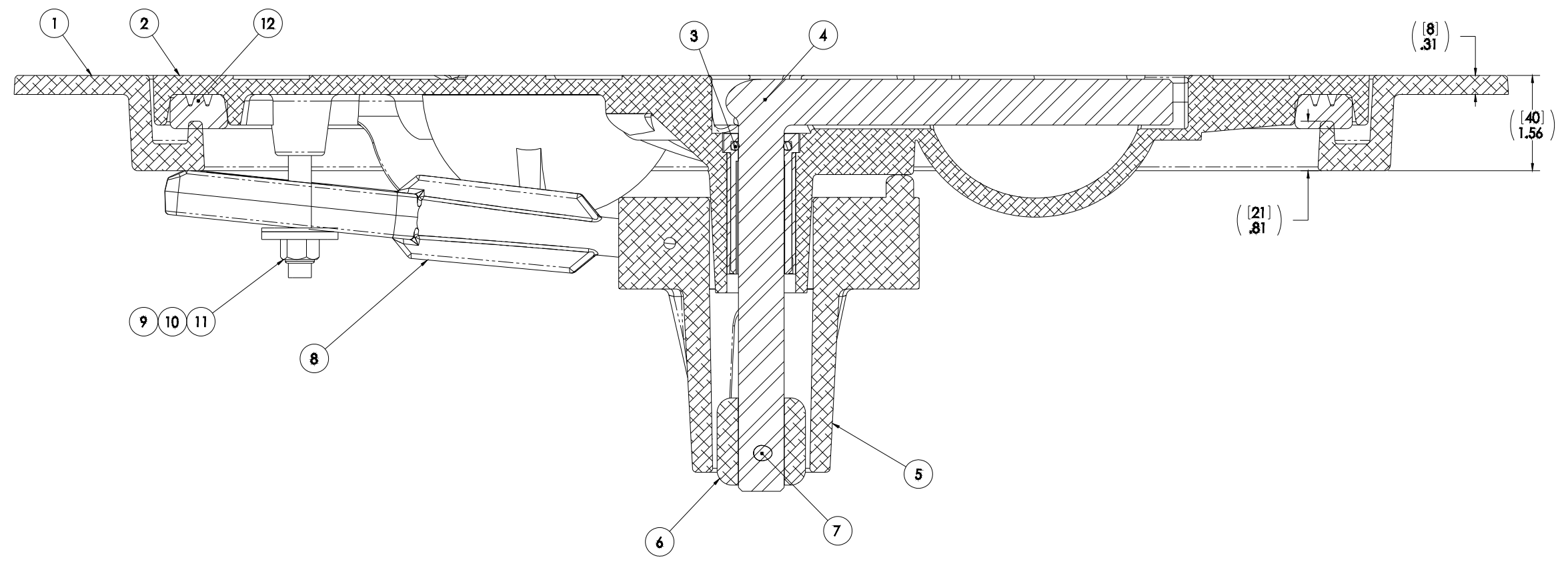
8 7 6 5 4 3 2 1

D

C

B

A



SECTION A-A

| ITEM NO. | QTY. | PART NUMBER | DESCRIPTION                               | MATERIAL             |
|----------|------|-------------|---|----------------------|
| 12       | 1    | 0813-2020   | GASKET: 18K (LIFT-OUT, 4.94 FT 0631-0813) | NEOPRENE             |
| 11       | 3    | 0411-2032   | NUT .375IN-16 SS 316 NYLOCK               | SS 316/316L          |
| 10       | 3    | 0411-2033   | WASHER .406 X 1.25 X .125IN SS 316        | SS 316/316L          |
| 9        | 3    | 0413-2005   | WASHER, .406 X 1.250 X .062 NYLON         | NYLON                |
| 8        | 3    | 0211-2005   | DOG, LOCKING ARM                          | ALUMINUM, 535.2-F    |
| 7        | 1    | 0411-2004   | PIN KNURLED .25 X 2.25IN SS 316           | SS 316/316L          |
| 6        | 1    | 0112-2001   | ACTUATOR, AL                              | ALUMINUM, 535        |
| 5        | 1    | 0011-2001   | HUB, 3 HOLE                               | ALUMINUM, 535.2-F    |
| 4        | 1    | 0021-2005   | HANDLE, S/S, ROUND BAR                    | STAINLESS STEEL, 316 |
| 3        | 1    | 0031-2058   | BUSHING ASSY, W/O-RING, NO SLEEVE         | ACETRON/RUBBER       |
| 2        | 1    | 2405-3001   | COVER: 18K ALUM, FINISHED CASTING         | ALUMINUM,            |
| 1        | 1    | 2405-1002   | RING: 18K ALUM                            | ALUMINUM             |

| REV. | DESCRIPTION           | DATE    | DRAWN |
|------|-----------------------|---------|-------|
| -    | INITIAL RELEASE       | 25AUG06 | MWF   |
| A    | UPDATED IN 3D         | 29NOV11 | GM    |
| B    | TOLERANCE MEET AS CMT | 01AUG13 | BR    |

SPECIFICATIONS SUBJECT TO CHANGE WITHOUT NOTICE.

PROJECTION

UNLESS OTHERWISE SPECIFIED DIMENSIONS ARE IN INCHES. TOLERANCES FOR ROUGH AND CLEAR OPENINGS: .125 INCH. ALL OTHERS ARE:  
 .X .XX .XXX ANGLES  
 ±.1 ±.03 ±.010 ±2°

DO NOT SCALE DRAWING

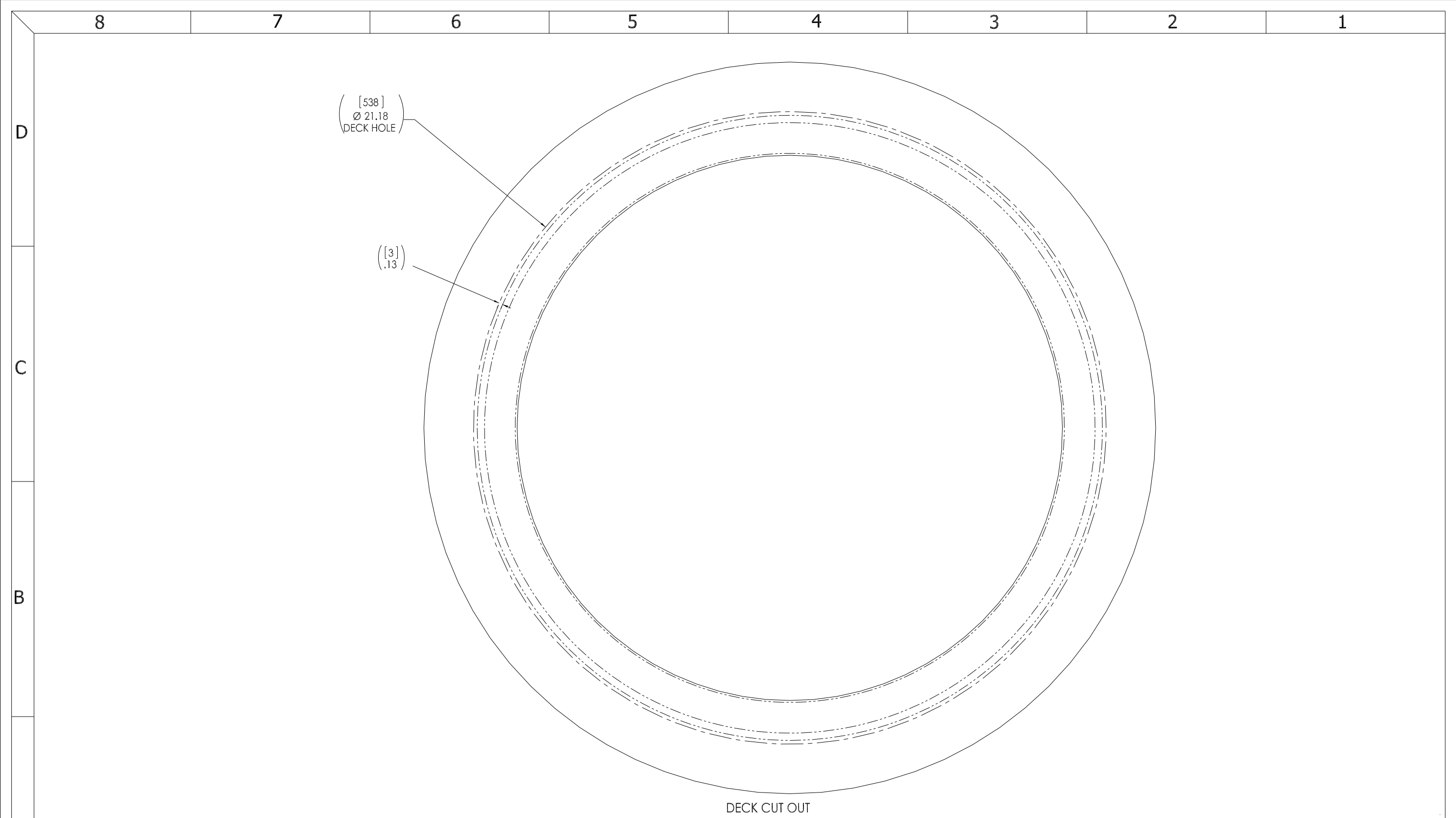
**FREEMAN MARINE EQUIPMENT, INC.**  
 28336 HUNTER CREEK ROAD  
 GOLD BEACH, OR 97444 U.S.A.  
 PHONE: 541-247-7078 FAX: 541-247-2114  
 www.freemanmarine.com

CLIENT: FREEMAN MARINE

TITLE: HATCH: 18K, AL COVER, AL RING

SIZE: D CAGE CODE: 64747 DRAWING NUMBER: 2405-0002 REV. B

SCALE: 1:1 CALC.WT. ACT. WT. SHEET 2 OF 3



- 3. FINISH: 125 RMS MAX.
- 2. BREAK SHARP EDGES AND DEBURR.
- 1. MATERIAL: ALUMINUMALUMINUM

NOTES: UNLESS OTHERWISE SPECIFIED.

CUSTOMER APPROVAL

Signature: \_\_\_\_\_  
 Date: \_\_\_\_\_

IMPORTANT! THIS DRAWING SUPERSEDES ALL OTHER DOCUMENTS. By signing this approval you accept and agree that the dimensions and details shown are correct and properly fit your application, regardless of any differences between this drawing and any contract specifications. Should you see any errors in the drawing, or have any questions, please contact your Freeman Marine sales engineer for clarification.

| REV. | DESCRIPTION             | DATE    | DRAWN |
|------|-------------------------|---------|-------|
| -    | INITIAL RELEASE         | 24JUL96 | MWF   |
| A    | UPDATED IN 3D           | 29NOV11 | GM    |
| B    | TOLERANCE MEETS AS CAST | 01AUG13 | BRC   |

SPECIFICATIONS SUBJECT TO CHANGE WITHOUT NOTICE.

PROJECTION

UNLESS OTHERWISE SPECIFIED DIMENSIONS ARE IN INCHES. TOLERANCES FOR ROUGH AND CLEAR OPENING: .125 INCH. ALL OTHERS ARE:  
 .X .XX .XXX ANGLES  
 ±.1 ±.03 ±.010 ±2°

DO NOT SCALE DRAWING

|  |  |  |                               |
|--|--|--|-------------------------------|
| <br><small>28336 HUNTER CREEK ROAD<br/>         GOLD BEACH, OR 97444 U.S.A.<br/>         PHONE: 541-247-7078 FAX: 541-247-2114<br/>         www.freemanmarine.com</small>  |  | CLIENT: FREEMAN MARINE                         |                               |
|  |  | TITLE: HATCH: 18K, AL COVER, AL RING           |                               |
| <small>CONFIDENTIAL: PROPERTY OF FREEMAN MARINE EQUIPMENT, INC. UNLESS OTHERWISE SPECIFIED. ALL RIGHTS RESERVED. THIS DRAWING IS THE PROPERTY OF FREEMAN MARINE EQUIPMENT, INC. AND IS NOT TO BE REPRODUCED OR COPIED.</small><br>DRAWN: G MACEACHERN DATE: 29NOV11<br>CHECKED: S SNYDER DATE: 29NOV11<br>ENGR: DATE:<br>DESIGN ACTIVITY: DATE:<br>CONTRACT NO.: | SIZE: <b>D</b><br>CAGE CODE: 64747<br>SCALE: 1:2.5 | DRAWING NUMBER: 2405-0002<br>CALC.WT. ACT. WT. | REV. <b>B</b><br>SHEET 3 OF 3 |