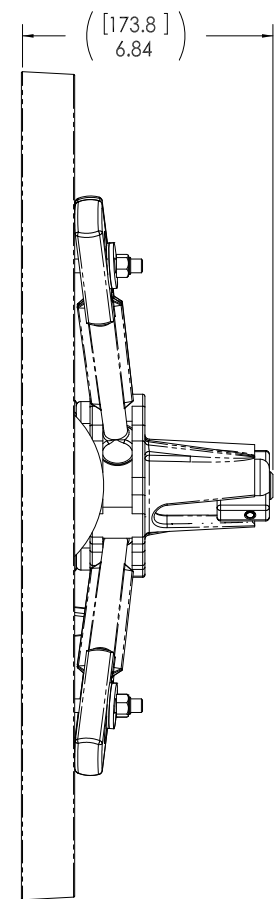
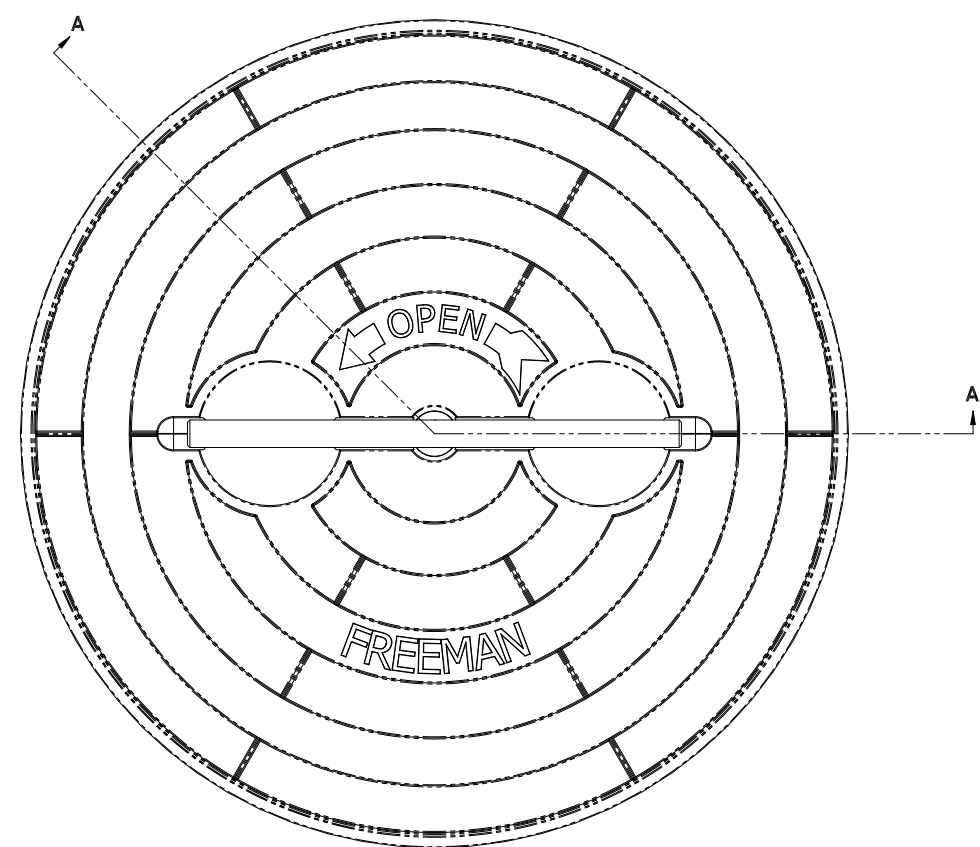
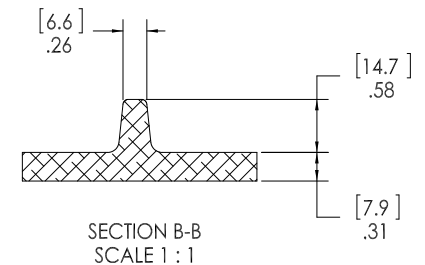
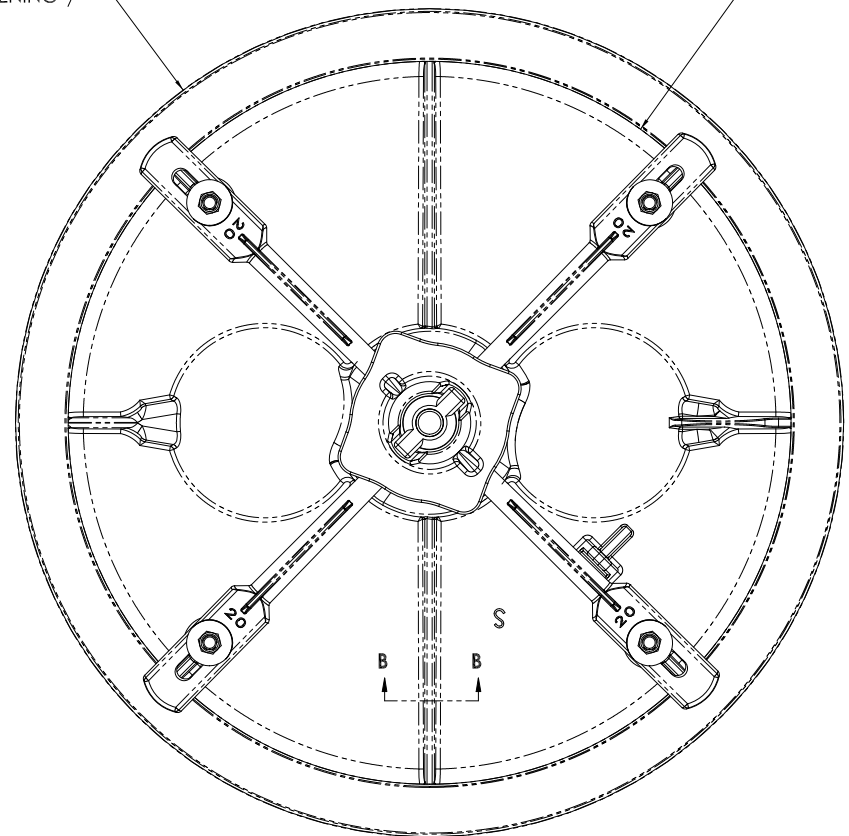


D
C
B
A



[574.9]
Ø 22.63
ROUGH OPENING



- 10. FOR SPECIFIC INFORMATION CONTACT SALES.
- 9. COMPLETE ASSEMBLY WEIGHT W/ DECK RING, 36.9LBS/ 16.7K.
- 8. DOGGING PRESSURE FULLY ADJUSTABLE.
- 7. HANDLE POSITION TOPSIDE INDICATES WHETHER DOGGING MECHANISM IS IN OPEN OR CLOSED POSITION.
- 6. ALUMINUM ALLOY MECHANISM SHOWN.
- 5. FLUSH, WATERTIGHT CONSTRUCTION.
- 4. INTEGRAL TOPSIDE "T" HANDLE STANDARD, OTHER TOPSIDE ACTUATION AVAILABLE.
- 3. MILD STEEL RING CAN BE WELDED.
- 2. QUICK-ACTING, MECHANISM ENGAGES OR DISENGAGES IN QUARTER-TURN OF CENTER SPINDLE.
- 1. 19.8" / 502MM DIAMETER CLEAR OPENING, ALL DIMENSIONS SHOWN SUBJECT TO CASTING VARIATION AND ARE REFERENCE ONLY.

NOTES: UNLESS OTHERWISE SPECIFIED.

CUSTOMER APPROVAL
Signature: _____
Date: _____
IMPORTANT! THIS DRAWING SUPERSEDES ALL OTHER DOCUMENTS. By signing this approval you accept and agree that the dimensions and details shown are correct and properly fit your application, regardless of any differences between this drawing and any contract specifications. Should you see any errors in the drawing, or have any questions, please contact your Freeman Marine sales engineer for clarification.

REV.	DESCRIPTION:	DATE:	DRAWN:
-	INITIAL RELEASE	03 SEPT 08	SAS
A	UPDATE GEN NOTES AND B.O.M.	07JUL11	PPC

SPECIFICATIONS SUBJECT TO CHANGE WITHOUT NOTICE.
PROJECTION
UNLESS OTHERWISE SPECIFIED DIMENSIONS ARE IN INCHES. TOLERANCES FOR ROUGH AND CLEAR OPENINGS: .125 INCH. ALL OTHERS ARE:
.X .XX .XXX ANGLES
±.1 ±.03 ±.010 ±2°
DO NOT SCALE DRAWING

FREEMAN MARINE EQUIPMENT, INC.
28336 HUNTER CREEK ROAD
GOLD BEACH, OR 97444 U.S.A.
PHONE: 541-247-7078 FAX: 541-247-2114
www.freemanmarine.com

CLIENT: FREEMAN MARINE
TITLE: HATCH: 20, AL COVER, MS RING

DRAWN: S SNYDER DATE: 03 SEPT 08
CHECKED: G. MACEACHERN DATE: 07JUL11
ENGR: DATE:
DESIGN ACTIVITY: DATE:
CONTRACT NO.:

SIZE	CAGE CODE	DRAWING NUMBER	REV.
D	64747	2406-0003	A
SCALE: 1:2.5	CALC. WT.	ACT. WT.	SHEET 1 OF 3

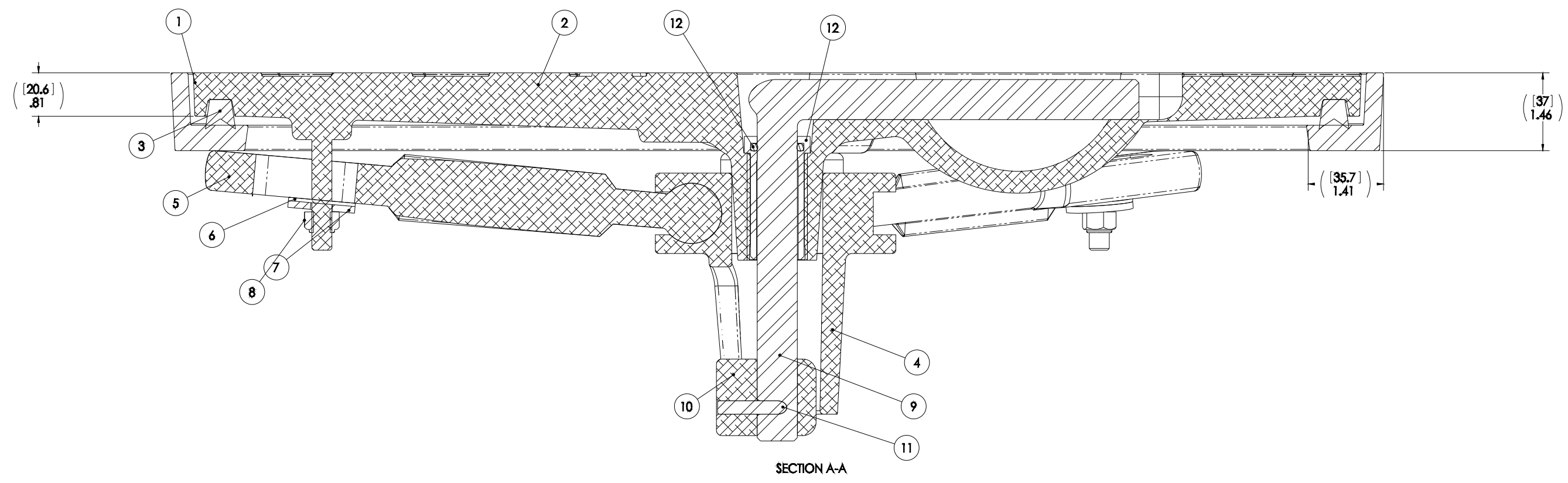
8 7 6 5 4 3 2 1

D

C

B

A



SECTION A-A

ITEM NO.	QTY.	PART NUMBER	DESCRIPTION	MATERIAL
12	1	0031-2058	BUSHING ASSY, W/O-RING, NO SLEEVE	ACETRON/RUBBER
11	1	0411-2004	PIN KNURLED .25 X 2.25IN SS 316	SS 316/316L
10	1	0112-2001	ACTUATOR, AL	ALUMINUM, 535
9	1	0021-2005	HANDLE, S/S, ROUND BAR	STAINLESS STEEL, 316
8	4	0411-2032	NUT .375IN-16 SS 316 NYLOCK	SS 316/316L
7	4	0411-2033	WASHER .406 X 1.25 X .125IN SS 316	SS 316/316L
6	4	0413-2005	WASHER .406 X 1.250 X .062 NYLON	NYLON
5	4	0211-2008	DOG, LOCKING ARM 20, AL	ALUMINUM, 535.2-F
4	1	0011-2002	HUB, AL, 4 HOLE	ALUMINUM, 535.2-F
3	1	9801-2007	GASKET:	NEOPRENE
2	1	2406-3001-3	COVER: 20 ALUM, FINISHED CASTING	ALUMINUM, A356.0-F
1	1	2406-1002-3	RING:20 STEEL	STEEL, A36

REV.	DESCRIPTION:	DATE:	DRAWN:
-	INITIAL RELEASE	03 SEPT 08	MS
A	UPDATE GEN NOTES AND B.O.M.	07JUL11	PPC

SPECIFICATIONS SUBJECT TO CHANGE WITHOUT NOTICE.

PROJECTION

UNLESS OTHERWISE SPECIFIED DIMENSIONS ARE IN INCHES. TOLERANCES FOR ROUGH AND CLEAR OPENINGS: .125 INCH. ALL OTHERS ARE:
 .X .XX .XXX ANGLES
 ±.1 ±.03 ±.010 ±2°

DO NOT SCALE DRAWING

FREEMAN MARINE EQUIPMENT, INC.
 28336 HUNTER CREEK ROAD
 GOLD BEACH, OR 97444 U.S.A.
 PHONE: 541-247-7078 FAX: 541-247-2114
 www.freemanmarine.com

CLIENT: FREEMAN MARINE

TITLE: HATCH: 20, AL COVER, MS RING

SIZE: D CAGE CODE: 64747 DRAWING NUMBER: 2406-0003 REV. A

SCALE: 1:1 CALC. WT. ACT. WT. SHEET 2 OF 3

CONTRACT NO.: _____

DESIGN ACTIVITY: _____ DATE: _____

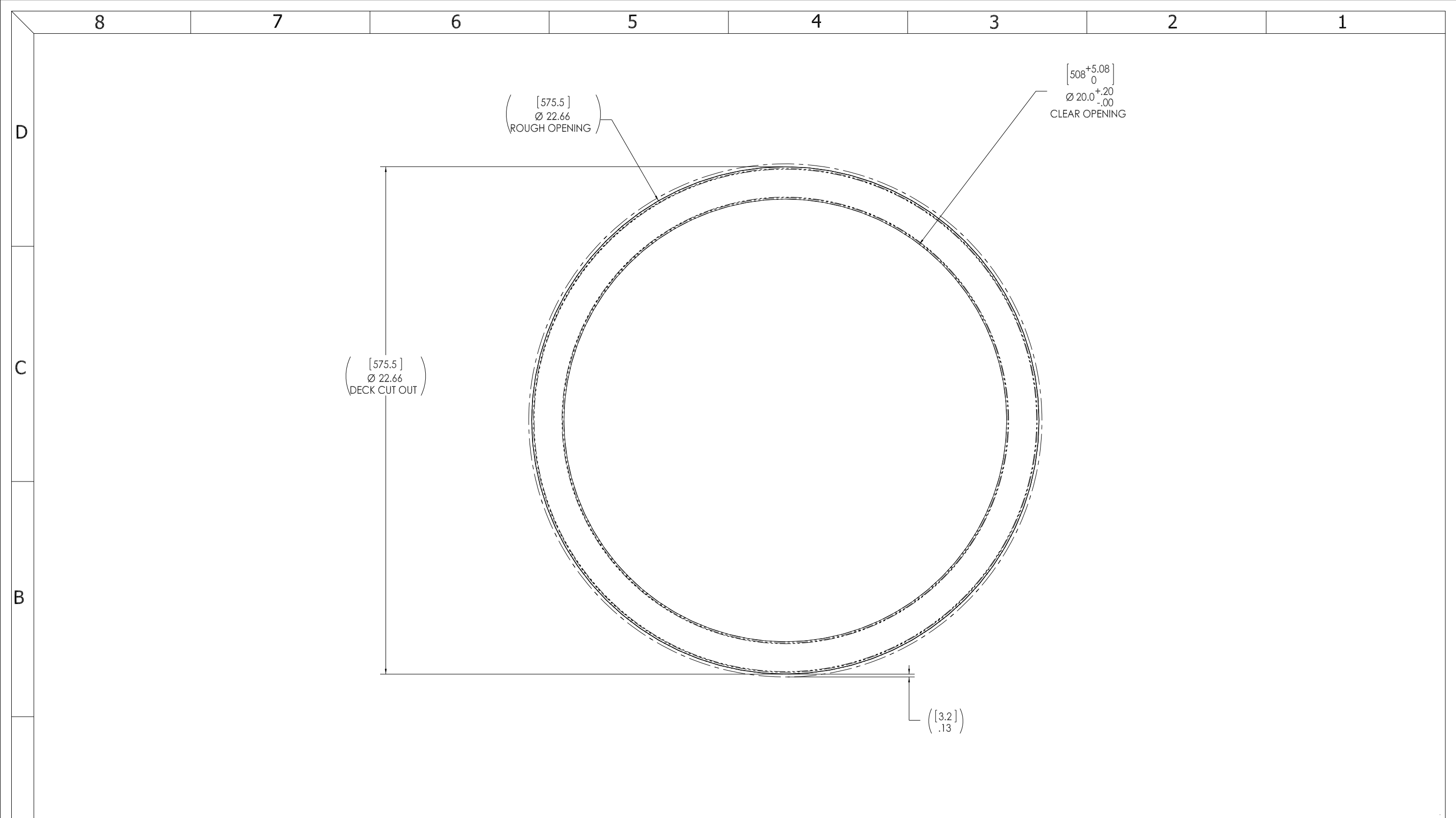
ENGR: _____ DATE: _____

CHECKED: G. MACEACHERN 07JUL11

DRAWN: S. SNYDER DATE: 03 SEPT 08

ALL RIGHTS RESERVED 2008

CONFIDENTIAL PROPERTY OF FREEMAN MARINE EQUIPMENT, INC. UNLESS OTHERWISE SPECIFIED OR OTHERWISE INDICATED, REPRODUCTION OR DISTRIBUTION OF THIS DOCUMENT IS STRICTLY PROHIBITED. POSSESSOR OF THIS DOCUMENT AGREES TO THE FOREGOING AND SHALL RETURN THIS DOCUMENT UPON REQUEST.



- 3. FINISH: 125 RMS MAX.
- 2. BREAK SHARP EDGES AND DEBURR.
- 1. MATERIAL: MILD STEEL, A36

NOTES: UNLESS OTHERWISE SPECIFIED.

CUSTOMER APPROVAL

Signature: _____
 Date: _____

IMPORTANT! THIS DRAWING SUPERSEDES ALL OTHER DOCUMENTS. By signing this approval you accept and agree that the dimensions and details shown are correct and properly fit your application, regardless of any differences between this drawing and any contract specifications. Should you see any errors in the drawing, or have any questions, please contact your Freeman Marine sales engineer for clarification.

REV.	DESCRIPTION	DATE	DRAWN
-	INITIAL RELEASE	03 SEPT 08	SAS
A	UPDATE GEN NOTES AND B.O.M.	07JUL11	PPC

SPECIFICATIONS SUBJECT TO CHANGE WITHOUT NOTICE.

PROJECTION

UNLESS OTHERWISE SPECIFIED DIMENSIONS ARE IN INCHES. TOLERANCES FOR ROUGH AND CLEAR OPENINGS: .125 INCH. ALL OTHERS ARE:

.X	.XX	.XXX	ANGLES
±.1	±.03	±.010	±2°

DO NOT SCALE DRAWING

		28336 HUNTER CREEK ROAD GOLD BEACH, OR 97444 U.S.A. PHONE: 541-247-7078 FAX: 541-247-2114 www.freemanmarine.com	
		CLIENT:	FREEMAN MARINE
CONFIDENTIAL PROPERTY OF FREEMAN MARINE EQUIPMENT, INC. <small>UNLESS OTHERWISE SPECIFIED, ALL DIMENSIONS ARE TO BE MANUFACTURED TO STRICTLY ACCORDANCE WITH THE REQUIREMENTS OF THE DRAWING. FREEMAN MARINE EQUIPMENT, INC. AND ITS PRODUCTS ARE NOT TO BE REPRODUCED OR COPIED.</small>		TITLE: HATCH: 20, AL COVER, MS RING	
DRAWN: S SNYDER CHECKED: G. MACEACHERN ENGR: _____ DESIGN ACTIVITY: _____ CONTRACT NO.: _____	DATE: 03 SEPT 08 DATE: 07JUL11 DATE: _____	SIZE: D CAGE CODE: 64747 SCALE: 1:2	DRAWING NUMBER: 2406-0003 ACT. WT.: _____ SHEET 3 OF 3