

10. FOR SPECIFIC INFORMATION CONTACT SALES.
9. COMPLETE ASSEMBLY WEIGHT W/ DECK RING, 50.1LBS
8. DOGGING PRESSURE FULLY ADJUSTABLE.
7. HANDLE POSITION TOPSIDE INDICATES WHETHER DOGGING MECHANISM IS IN OPEN OR CLOSED POSITION.
6. ALUMINUM ALLOY MECHANISM SHOWN.
5. FLUSH, WATERTIGHT CONSTRUCTION.
4. INTEGRAL TOPSIDE "T" HANDLE STANDARD, OTHER TOPSIDE ACTUATION AVAILABLE.
3. CAST ALUMINUM ALLOY FLANGE. FLANGE CAN BE DRILLED FOR BOLTED INSTALLATIONS OR WELDED TO ALUMINUM.
2. QUICK-ACTING, MECHANISM ENGAGES OR DISENGAGES IN QUARTER-TURN OF CENTER SPINDLE.
1. 22.00"/ 559MM DIAMETER CLEAR OPENING. ALL DIMENSIONS SHOWN SUBJECT TO CASTING VARIATION AND ARE REFERENCE ONLY.

NOTES: UNLESS OTHERWISE SPECIFIED.

CUSTOMER APPROVAL
 Signature: _____
 Date: _____

| REV. | DESCRIPTION | DATE | BY | CHKD. |
|------|--------------------|---------|-----|-------|
| 1. | PRODUCTION RELEASE | 8/20/14 | JZT | |

PRODUCTION

UNLESS OTHERWISE SPECIFIED DIMENSIONS ARE IN INCHES. TOLERANCES FOR HATCH AND CLEAR OPENING: .125 INCH. ALL OTHERS ARE:

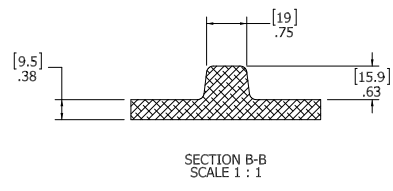
.X .XX .XXX ANGLES
 ±.1 ±.03 ±.010 ±.2°

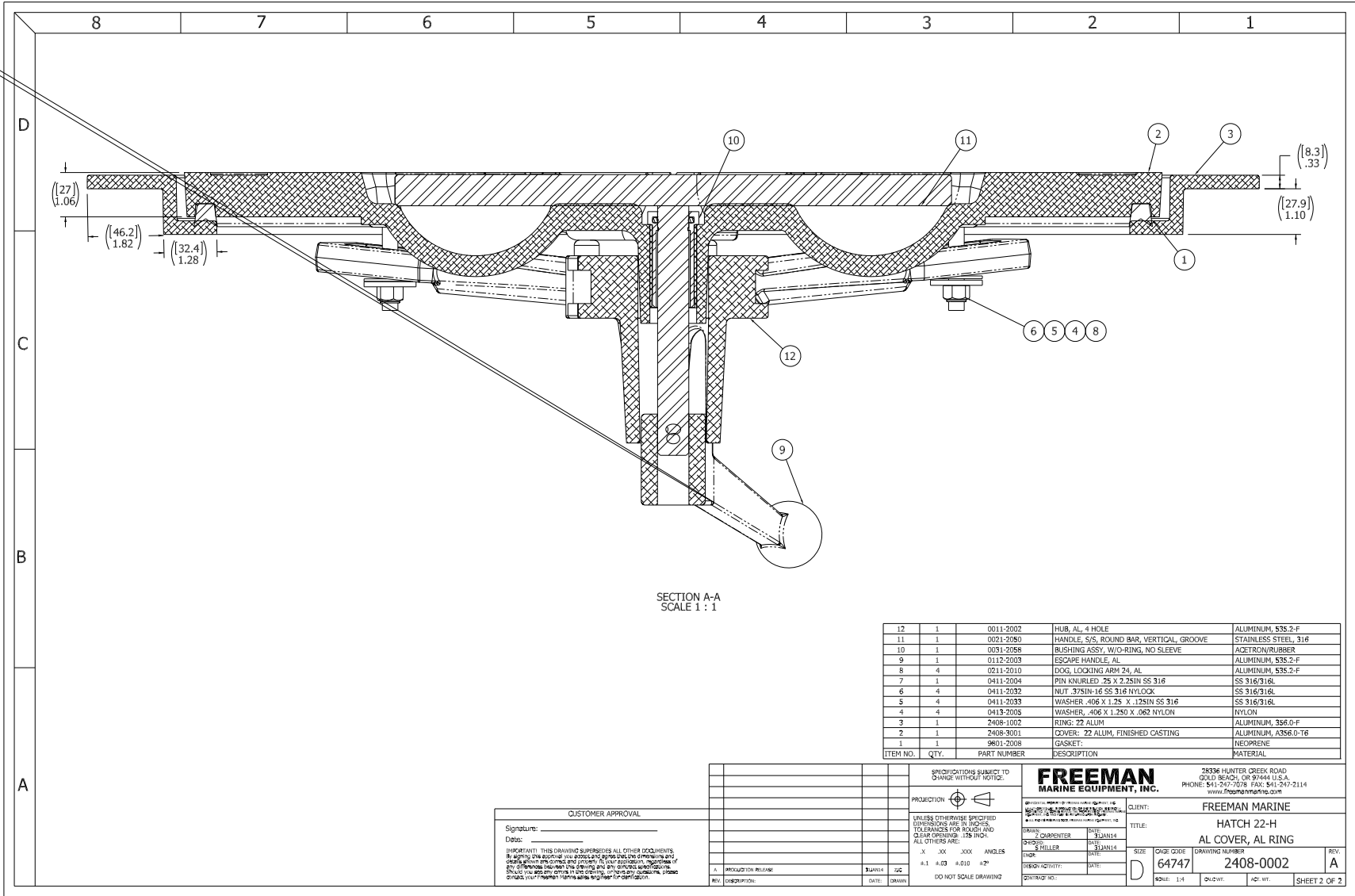
DO NOT SCALE DRAWING

FREEMAN MARINE EQUIPMENT, INC.
 28336 HUNTER CREEK ROAD
 GOLD BEACH, OR 97444 U.S.A.
 PHONE: 541-247-7078 FAX: 541-247-2114
 www.freemarine.com

CLIENT: FREEMAN MARINE
 TITLE: HATCH 22-H
 AL COVER, AL RING

SIZE: D
 DWG CODE: 64747
 DRAWING NUMBER: 2408-0002
 SCALE: 1:1
 SHEET 1 OF 2





SECTION A-A
SCALE 1 : 1

| ITEM NO. | QTY. | PART NUMBER | DESCRIPTION | MATERIAL |
|----------|------|-------------|--|----------------------|
| 12 | 1 | 0011-2002 | HUB, AL, 4 HOLE | ALUMINUM, 535.2-F |
| 11 | 1 | 0021-2050 | HANDLE, S/S, ROUND BAR, VERTICAL, GROOVE | STAINLESS STEEL, 316 |
| 10 | 1 | 0031-2058 | BUSHING ASSY, W/O-RING, NO SLEEVE | ACETRON/RUBBER |
| 9 | 1 | 0112-2003 | ESCAPE HANDLE, AL | ALUMINUM, 535.2-F |
| 8 | 4 | 0211-2010 | DOG, LOCKING ARM 24, AL | ALUMINUM, 535.2-F |
| 7 | 1 | 0411-2004 | PIN KNURLED .25 X 2.25IN SS 316 | SS 316/316L |
| 6 | 4 | 0411-2032 | NUT .375IN-16 SS 316 NYLOCK | SS 316/316L |
| 5 | 4 | 0411-2033 | WASHER .406 X 1.25 X .125IN SS 316 | SS 316/316L |
| 4 | 4 | 0413-2005 | WASHER .406 X 1.250 X .062 NYLON | NYLON |
| 3 | 1 | 2408-1002 | RING: 22 ALUM | ALUMINUM, 356.0-F |
| 2 | 1 | 2408-3001 | COVER: 22 ALUM, FINISHED CASTING | ALUMINUM, A356.0-T6 |
| 1 | 1 | 9801-2008 | GASKET: | NEOPRENE |

SPECIFICATIONS SUBJECT TO CHANGE WITHOUT NOTICE.
 PROJECTION:

UNLESS OTHERWISE SPECIFIED, DIMENSIONS ARE IN INCHES TO THIRDS FOR HOLES AND CLEAR OPENINGS, 1/16 INCH, ALL OTHER ARE:

| | | | |
|------|------|-------|--------|
| INCH | XX | XXX | ANGLES |
| ±.1 | ±.03 | ±.010 | ±.2° |

DO NOT SCALE DRAWING

CUSTOMER APPROVAL
 Signature: _____
 Date: _____

FREEMAN MARINE EQUIPMENT, INC.
 28336 HUNTER CREEK ROAD
 OCELOD BEACH, OR 97144 U.S.A.
 PHONE: 541-247-7078 FAX: 541-247-2114
 WWW.FREEMANSHIP.COM

CLIENT: FREEMAN MARINE
 TITLE: HATCH 22-H
 AL COVER, AL RING
 SIZE: 64747
 DRAWING NUMBER: 2408-0002
 SCALE: 1:4
 SHEET 2 OF 2