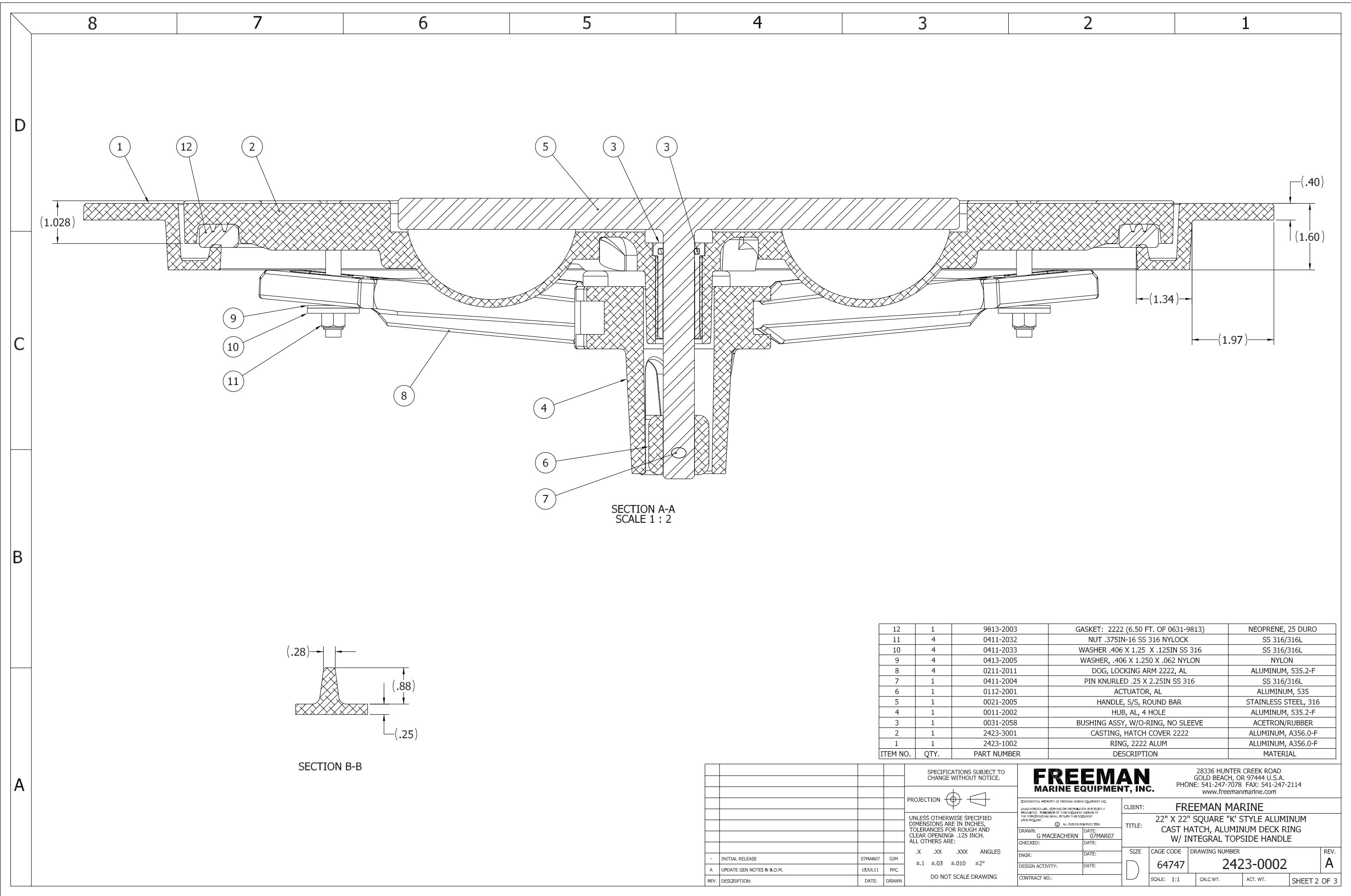
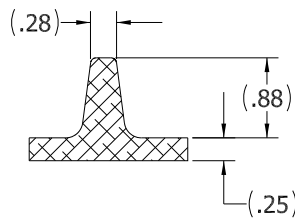


10. FOR SPECIFIC INFORMATION CONTACT SALES.
9. COMPLETE ASSEMBLY WEIGHT W/ DECK RING, 48.2LBS/ 21.8.6K.
8. DOGGING PRESSURE FULLY ADJUSTABLE.
7. HANDLE POSITION TOPSIDE INDICATES WHETHER DOGGING MECHANISM IS IN OPEN OR CLOSED POSITION.
6. ALUMINUM ALLOY MECHANISM SHOWN.
5. FLUSH, WATERTIGHT CONSTRUCTION.
4. INTEGRAL TOPSIDE "T" HANDLE STANDARD, OTHER TOPSIDE ACTUATION AVAILABLE.
3. CAST ALUMINUM ALLOY FLANGE, FLANGE CAN BE DRILLED FOR BOLTED INSTALLATIONS OR WELDED TO ALUMINUM.
2. QUICK-ACTING, MECHANISM ENGAGES OR DISENGAGES IN QUARTER-TURN OF CENTER SPINDLE.
1. 22.0" X 22.0" CLEAR OPENING, ALL DIMENSIONS SHOWN SUBJECT TO CASTING VARIATION AND ARE REFERENCE ONLY.
- NOTES: UNLESS OTHERWISE SPECIFIED.

SPECIFICATIONS SUBJECT TO CHANGE WITHOUT NOTICE.			FREEMAN MARINE EQUIPMENT, INC. 28336 HUNTER CREEK ROAD GOLD BEACH, OR 97444 U.S.A. PHONE: 541-247-7078 FAX: 541-247-2114 www.freemanmarine.com	
PROJECTION			CLIENT: FREEMAN MARINE	
UNLESS OTHERWISE SPECIFIED DIMENSIONS ARE IN INCHES. TOLERANCES FOR ROUGH AND CLEAR OPENINGS: .125 INCH. ALL OTHERS ARE: .X .XX .XXX ANGLES ±.1 ±.03 ±.010 ±2°			TITLE: 22" X 22" SQUARE "K" STYLE ALUMINUM CAST HATCH, ALUMINUM DECK RING W/ INTEGRAL TOPSIDE HANDLE	
DO NOT SCALE DRAWING			SIZE: D CAGE CODE: 64747 DRAWING NUMBER: 2423-0002 REV: A	
- INITIAL RELEASE 07MAR07 GJM A UPDATE GEN NOTES & B.O.M. 15JUL11 PPC	DATE: 07MAR07 DATE:	DRAWN: G MACEACHERN CHECKED: DATE:	SCALE: 1:3 CALC. WT. ACT. WT.	SHEET 1 OF 3



SECTION A-A
SCALE 1 : 2



SECTION B-B

ITEM NO.	QTY.	PART NUMBER	DESCRIPTION	MATERIAL
12	1	9813-2003	GASKET: 2222 (6.50 FT. OF 0631-9813)	NEOPRENE, 25 DURO
11	4	0411-2032	NUT .375IN-16 SS 316 NYLOCK	SS 316/316L
10	4	0411-2033	WASHER .406 X 1.25 X .125IN SS 316	SS 316/316L
9	4	0413-2005	WASHER, .406 X 1.250 X .062 NYLON	NYLON
8	4	0211-2011	DOG, LOCKING ARM 2222, AL	ALUMINUM, 535.2-F
7	1	0411-2004	PIN KNURLED .25 X 2.25IN SS 316	SS 316/316L
6	1	0112-2001	ACTUATOR, AL	ALUMINUM, 535
5	1	0021-2005	HANDLE, S/S, ROUND BAR	STAINLESS STEEL, 316
4	1	0011-2002	HUB, AL, 4 HOLE	ALUMINUM, 535.2-F
3	1	0031-2058	BUSHING ASSY, W/O-RING, NO SLEEVE	ACETRON/RUBBER
2	1	2423-3001	CASTING, HATCH COVER 2222	ALUMINUM, A356.0-F
1	1	2423-1002	RING, 2222 ALUM	ALUMINUM, A356.0-F

REV.	DESCRIPTION	DATE	DRAWN
-	INITIAL RELEASE	07MAR07	GJM
A	UPDATE GEN NOTES & B.O.M.	15JUL11	PPC

SPECIFICATIONS SUBJECT TO CHANGE WITHOUT NOTICE.

PROJECTION

UNLESS OTHERWISE SPECIFIED DIMENSIONS ARE IN INCHES. TOLERANCES FOR ROUGH AND CLEAR OPENINGS: .125 INCH. ALL OTHERS ARE:
 .X .XX .XXX ANGLES
 ±.1 ±.03 ±.010 ±2°

DO NOT SCALE DRAWING

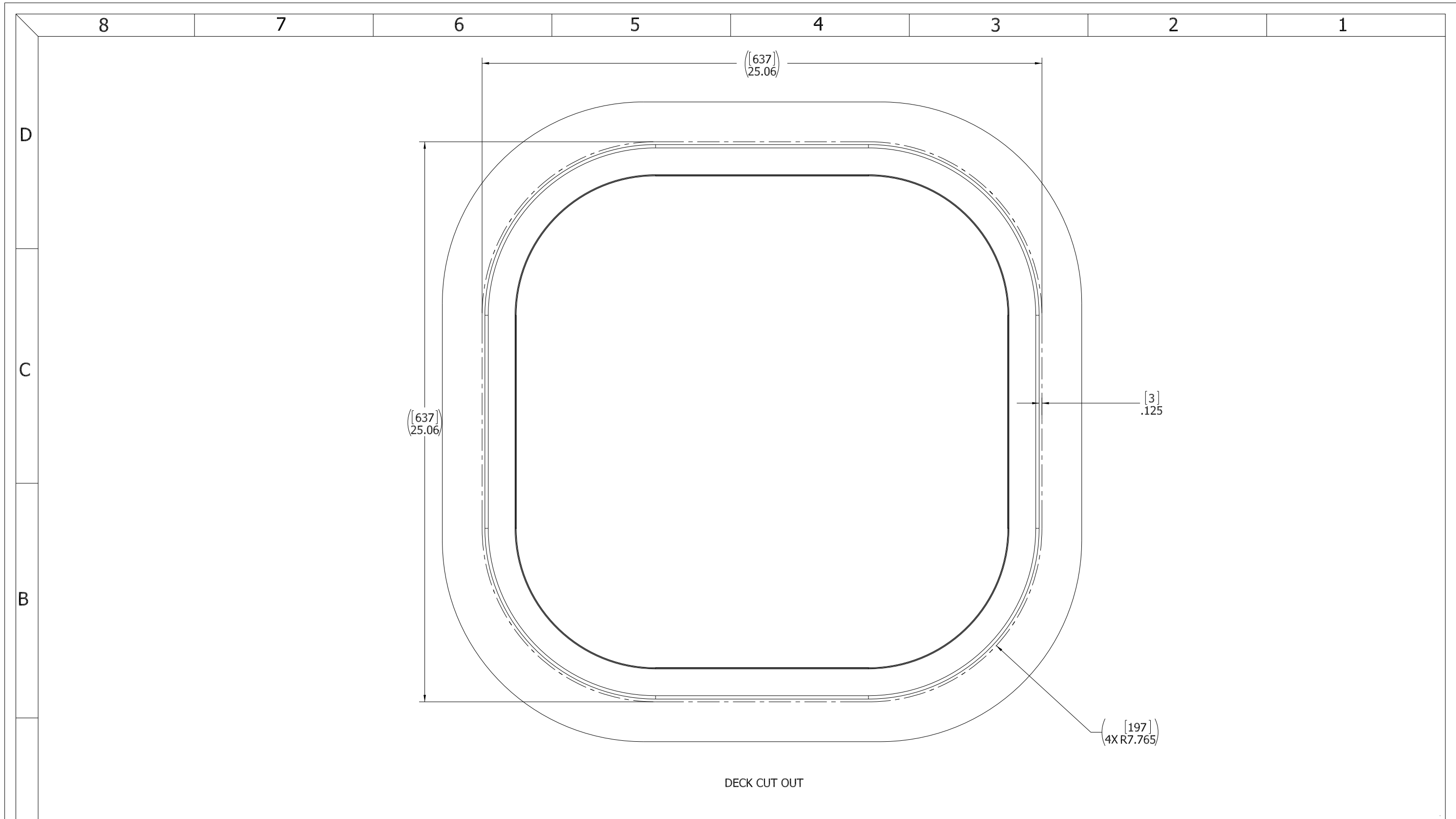
FREEMAN MARINE EQUIPMENT, INC.
 28336 HUNTER CREEK ROAD
 GOLD BEACH, OR 97444 U.S.A.
 PHONE: 541-247-7078 FAX: 541-247-2114
 www.freemanmarine.com

CLIENT: **FREEMAN MARINE**

TITLE: **22" X 22" SQUARE "K" STYLE ALUMINUM CAST HATCH, ALUMINUM DECK RING W/ INTEGRAL TOPSIDE HANDLE**

SIZE: **D** CAGE CODE: **64747** DRAWING NUMBER: **2423-0002** REV. **A**

SCALE: 1:1 CALC. WT. ACT. WT. SHEET 2 OF 3



DECK CUT OUT

- 3. FINISH: 125 RMS MAX.
- 2. BREAK SHARP EDGES AND DEBURR.
- 1. MATERIAL: REF. S/A - B.O.M.

NOTES: UNLESS OTHERWISE SPECIFIED.

CUSTOMER APPROVAL

Signature: _____
 Date: _____

IMPORTANT! THIS DRAWING SUPERSEDES ALL OTHER DOCUMENTS. By signing this approval you accept and agree that the dimensions and details shown are correct and properly fit your application, regardless of any differences between this drawing and any contract specifications. Should you see any errors in the drawing, or have any questions, please contact your Freeman Marine sales engineer for clarification.

REV.	DESCRIPTION	DATE	DRAWN
-	INITIAL RELEASE	07MAR07	GJM
A	UPDATE GEN NOTES & B.O.M.	15JUL11	PPC

SPECIFICATIONS SUBJECT TO CHANGE WITHOUT NOTICE.

PROJECTION

UNLESS OTHERWISE SPECIFIED DIMENSIONS ARE IN INCHES. TOLERANCES FOR ROUGH AND CLEAR OPENINGS: .125 INCH. ALL OTHERS ARE:

.X	.XX	.XXX	ANGLES
±.1	±.03	±.010	±2°

DO NOT SCALE DRAWING

FREEMAN MARINE EQUIPMENT, INC. <small>CONFIDENTIAL PROPERTY OF FREEMAN MARINE EQUIPMENT, INC. QUALITY PRODUCTS. USE, REPRODUCTION OR DISTRIBUTION IN STRICTLY PROHIBITED. ALL RIGHTS RESERVED. THE RESPECTIVE TRADEMARKS OF FREEMAN MARINE EQUIPMENT, INC. ARE HEREBY REGISTERED AND PROTECTED BY LAW.</small>		28336 HUNTER CREEK ROAD GOLD BEACH, OR 97444 U.S.A. PHONE: 541-247-7078 FAX: 541-247-2114 www.freemanmarine.com	
		CLIENT: FREEMAN MARINE	
DRAWN: G MACEACHERN CHECKED: _____ ENGR: _____ DESIGN ACTIVITY: _____ CONTRACT NO.: _____		TITLE: 22" X 22" SQUARE "K" STYLE ALUMINUM CAST HATCH, ALUMINUM DECK RING	
SIZE: D	CAGE CODE: 64747	DRAWING NUMBER: 2423-0002	REV: A
SCALE: 1:2	CALC WT.	ACT. WT.	SHEET 3 OF 3