

- 11. FINISH - COAMING: PER SALES ORDER SPECIFICATION.  
FINISH - COVER: PER SALES ORDER SPECIFICATION.
- 10. FOR SPECIFIC INFORMATION CONTACT SALES.
- 9. COMPLETE ASSEMBLY WEIGHT W/ DECK RING, 57.8LBS/ 26.3K.
- 8. DOGGING PRESSURE FULLY ADJUSTABLE.
- 7. HANDLE POSITION TOPSIDE INDICATES WHETHER DOGGING MECHANISM IS IN OPEN OR CLOSED POSITION.
- 6. ALUMINUM ALLOY MECHANISM SHOWN.
- 5. FLUSH, WATERTIGHT CONSTRUCTION.
- 4. INTEGRAL TOPSIDE "T" HANDLE STANDARD, OTHER TOPSIDE ACTUATION AVAILABLE.
- 3. CAST ALUMINUM ALLOY FLANGE, FLANGE CAN BE DRILLED FOR BOLTED INSTALLATIONS OR WELDED TO ALUMINUM.
- 2. QUICK-ACTING, MECHANISM ENGAGES OR DISENGAGES IN QUARTER-TURN OF CENTER SPINDLE.
- 1. 14.8 x 23.8" CLEAR OPENING, ALL DIMENSIONS SHOWN SUBJECT TO CASTING VARIATION AND ARE REFERENCE ONLY.

NOTES: UNLESS OTHERWISE SPECIFIED.

CUSTOMER APPROVAL

Signature: \_\_\_\_\_  
Date: \_\_\_\_\_

IMPORTANT! THIS DRAWING SUPERSEDES ALL OTHER DOCUMENTS. By signing this approval you accept and agree that the dimensions and details shown are correct and properly fit your application, regardless of any differences between this drawing and any contract specifications. Should you see any errors in the drawing, or have any questions, please contact your Freeman Marine sales engineer for clarification.

REV.	DESCRIPTION:	DATE:	DRAWN:
-	INITIAL RELEASE	04MAY07	TLK
A	UPDATE GEN NOTES & B.O.M.	18JUL11	PPC

SPECIFICATIONS SUBJECT TO CHANGE WITHOUT NOTICE.

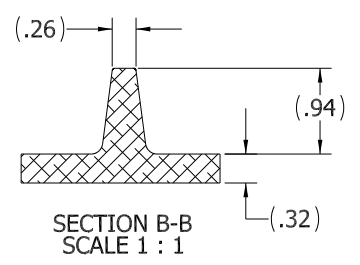
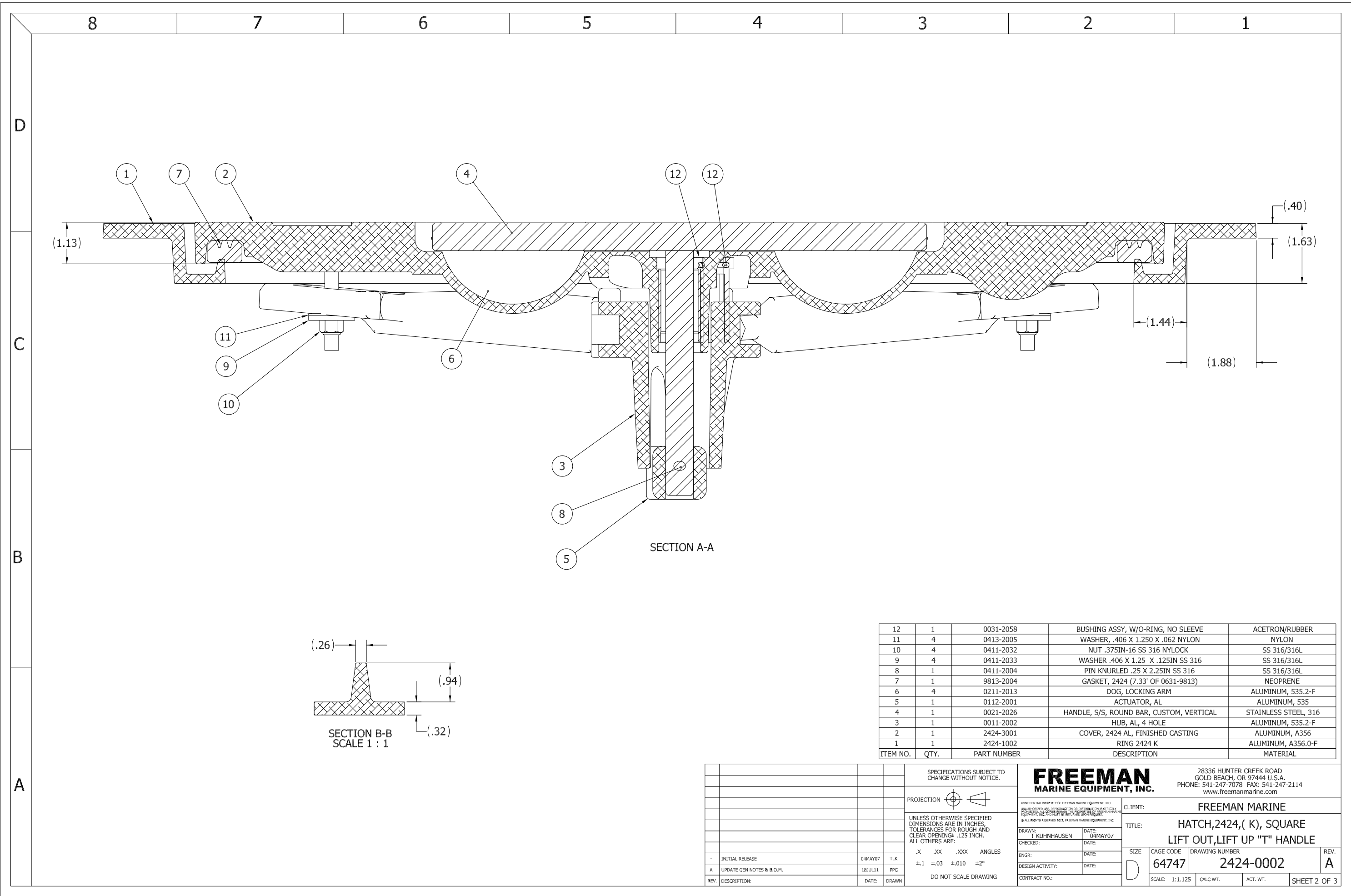
PROJECTION

UNLESS OTHERWISE SPECIFIED DIMENSIONS ARE IN INCHES. TOLERANCES FOR ROUGH AND CLEAR OPENINGS: .125 INCH. ALL OTHERS ARE:

.X .XX .XXX ANGLES  
±.1 ±.03 ±.010 ±2°

DO NOT SCALE DRAWING

		28336 HUNTER CREEK ROAD GOLD BEACH, OR 97444 U.S.A. PHONE: 541-247-7078 FAX: 541-247-2114 www.freemanmarine.com	
		CLIENT:	FREEMAN MARINE
CONFIDENTIAL PROPERTY OF FREEMAN MARINE EQUIPMENT, INC. <small>UNLESS OTHERWISE SPECIFIED, ALL DIMENSIONS ARE IN INCHES. TOLERANCES FOR ROUGH AND CLEAR OPENINGS: .125 INCH. ALL OTHERS ARE: .X .XX .XXX ANGLES ±.1 ±.03 ±.010 ±2°</small>		TITLE:	HATCH, 2424, (K), SQUARE LIFT OUT, LIFT UP "T" HANDLE
DRAWN:	T KUHNHAUSEN	DATE:	04MAY07
CHECKED:		DATE:	
ENGR:		DATE:	
DESIGN ACTIVITY:		DATE:	
CONTRACT NO.:		SCALE:	1:3
SIZE:	D	CAGE CODE:	64747
DRAWING NUMBER:	2424-0002	ACT. WT.:	
REV.:	A	SHEET 1 OF 3	



ITEM NO.	QTY.	PART NUMBER	DESCRIPTION	MATERIAL
12	1	0031-2058	BUSHING ASSY, W/O-RING, NO SLEEVE	ACETRON/RUBBER
11	4	0413-2005	WASHER, .406 X 1.250 X .062 NYLON	NYLON
10	4	0411-2032	NUT .375IN-16 SS 316 NYLOCK	SS 316/316L
9	4	0411-2033	WASHER .406 X 1.25 X .125IN SS 316	SS 316/316L
8	1	0411-2004	PIN KNURLED .25 X 2.25IN SS 316	SS 316/316L
7	1	9813-2004	GASKET, 2424 (7.33' OF 0631-9813)	NEOPRENE
6	4	0211-2013	DOG, LOCKING ARM	ALUMINUM, 535.2-F
5	1	0112-2001	ACTUATOR, AL	ALUMINUM, 535
4	1	0021-2026	HANDLE, S/S, ROUND BAR, CUSTOM, VERTICAL	STAINLESS STEEL, 316
3	1	0011-2002	HUB, AL, 4 HOLE	ALUMINUM, 535.2-F
2	1	2424-3001	COVER, 2424 AL, FINISHED CASTING	ALUMINUM, A356
1	1	2424-1002	RING 2424 K	ALUMINUM, A356.0-F

REV.	DESCRIPTION:	DATE:	DRAWN:
-	INITIAL RELEASE	04MAY07	TLK
A	UPDATE GEN NOTES & B.O.M.	18JUL11	PPC

SPECIFICATIONS SUBJECT TO CHANGE WITHOUT NOTICE.

PROJECTION

UNLESS OTHERWISE SPECIFIED DIMENSIONS ARE IN INCHES. TOLERANCES FOR ROUGH AND CLEAR OPENINGS: .125 INCH. ALL OTHERS ARE:  
 .X .XX .XXX ANGLES  
 ±.1 ±.03 ±.010 ±2°

DO NOT SCALE DRAWING

**FREEMAN MARINE EQUIPMENT, INC.**  
 28336 HUNTER CREEK ROAD  
 GOLD BEACH, OR 97444 U.S.A.  
 PHONE: 541-247-7078 FAX: 541-247-2114  
 www.freemanmarine.com

CONFIDENTIAL PROPERTY OF FREEMAN MARINE EQUIPMENT, INC. UNLESS OTHERWISE SPECIFIED, ALL DIMENSIONS ARE TO BE TAKEN FROM THE UNFINISHED SURFACE. ALL RIGHTS RESERVED 2012, FREEMAN MARINE EQUIPMENT, INC.

CLIENT: **FREEMAN MARINE**

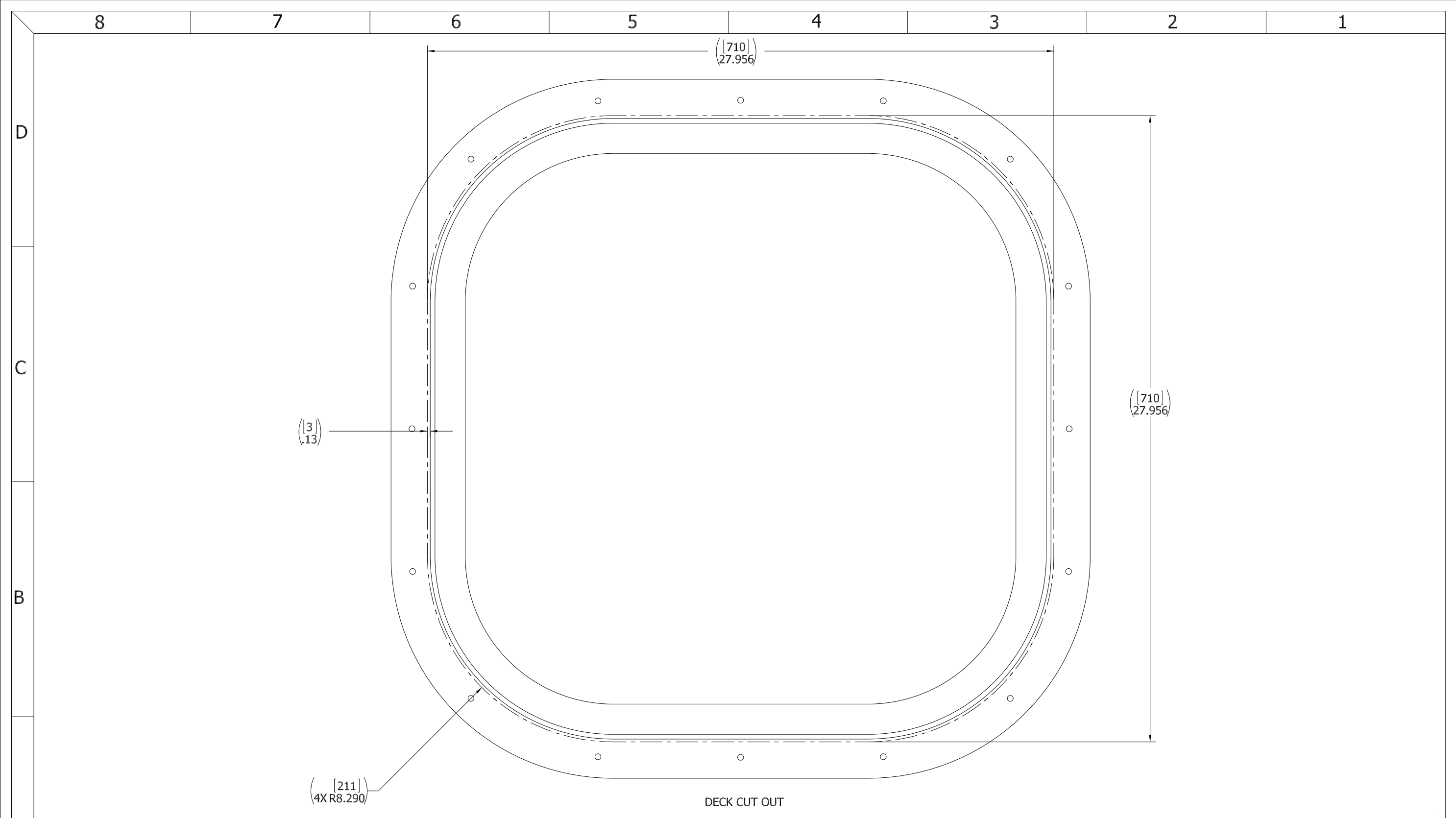
TITLE: **HATCH, 2424, ( K ), SQUARE LIFT OUT, LIFT UP "T" HANDLE**

SCALE: **D** 1:1.125

SIZE: **D** CAGE CODE: **64747** DRAWING NUMBER: **2424-0002**

CONTRACT NO.: \_\_\_\_\_

SCALE: 1:1.125 CALC. WT. ACT. WT. SHEET 2 OF 3



- 3. FINISH: 125 RMS MAX.
- 2. BREAK SHARP EDGES AND DEBURR.
- 1. MATERIAL: REF. S/A - B.O.M.

NOTES: UNLESS OTHERWISE SPECIFIED.

CUSTOMER APPROVAL

Signature: \_\_\_\_\_  
 Date: \_\_\_\_\_

IMPORTANT! THIS DRAWING SUPERSEDES ALL OTHER DOCUMENTS. By signing this approval you accept and agree that the dimensions and details shown are correct and properly fit your application, regardless of any differences between this drawing and any contract specifications. Should you see any errors in the drawing, or have any questions, please contact your Freeman Marine sales engineer for clarification.

REV.	DESCRIPTION	DATE	DRAWN
-	INITIAL RELEASE	04MAY07	TLK
A	UPDATE GEN NOTES & B.O.M.	18JUL11	PPC

SPECIFICATIONS SUBJECT TO CHANGE WITHOUT NOTICE.

PROJECTION

UNLESS OTHERWISE SPECIFIED DIMENSIONS ARE IN INCHES. TOLERANCES FOR ROUGH AND CLEAR OPENINGS: .125 INCH. ALL OTHERS ARE:  
 .X .XX .XXX ANGLES  
 ±.1 ±.03 ±.010 ±2°

DO NOT SCALE DRAWING

		28336 HUNTER CREEK ROAD GOLD BEACH, OR 97444 U.S.A. PHONE: 541-247-7078 FAX: 541-247-2114 www.freemanmarine.com	
		CLIENT:	FREEMAN MARINE
<small>CONFIDENTIAL PROPERTY OF FREEMAN MARINE EQUIPMENT, INC. UNLESS OTHERWISE SPECIFIED. ALL RIGHTS RESERVED. THIS DRAWING IS THE PROPERTY OF FREEMAN MARINE EQUIPMENT, INC. AND SHALL BE RETURNED UPON REQUEST.</small>		TITLE: HATCH, 2424, ( K ), SQUARE LIFT OUT, LIFT UP "T" HANDLE	
DRAWN: T KUHNHAUSEN CHECKED: _____ ENGR: _____ DESIGN ACTIVITY: _____ CONTRACT NO.: _____	DATE: 04MAY07 DATE: _____ DATE: _____	SIZE: D CAGE CODE: 64747 SCALE: 1:2	DRAWING NUMBER: 2424-0002 ACT. WT.: _____ SHEET 3 OF 3