

10. FOR SPECIFIC INFORMATION CONTACT SALES.
9. COMPLETE ASSEMBLY WEIGHT W/ DECK RING, 78.0LBS/ 35.4K.
8. DOGGING PRESSURE FULLY ADJUSTABLE.
7. HANDLE POSITION TOPSIDE INDICATES WHETHER DOGGING MECHANISM IS IN OPEN OR CLOSED POSITION.
6. ALUMINUM ALLOY MECHANISM SHOWN.
5. FLUSH, WATERTIGHT CONSTRUCTION.
4. INTEGRAL TOPSIDE "T" HANDLE STANDARD, OTHER TOPSIDE ACTUATION AVAILABLE.
3. STAINLESS STEEL COAMING FOR WELD IN DECK APPLICATIONS.
2. QUICK-ACTING, MECHANISM ENGAGES OR DISENGAGES IN QUARTER-TURN OF CENTER SPINDLE.
1. 27.0 X 27.0 CLEAR OPENING, ALL DIMENSIONS SHOWN SUBJECT TO CASTING VARIATION AND ARE REFERENCE ONLY.

NOTES: UNLESS OTHERWISE SPECIFIED.

CUSTOMER APPROVAL

Signature: _____
 Date: _____

IMPORTANT! THIS DRAWING SUPERSEDES ALL OTHER DOCUMENTS. By signing this approval you accept and agree that the dimensions and details shown are correct and properly fit your application, regardless of any differences between this drawing and any contract specifications. Should you see any errors in the drawing, or have any questions, please contact your Freeman Marine sales engineer for clarification.

| | |
|--|--------------------|
| SPECIFICATIONS SUBJECT TO CHANGE WITHOUT NOTICE. | |
| PROJECTION | |
| UNLESS OTHERWISE SPECIFIED DIMENSIONS ARE IN INCHES. TOLERANCES FOR ROUGH AND CLEAR OPENINGS: .125 INCH. ALL OTHERS ARE: | |
| .X | .XX .XXX ANGLES |
| ±.1 | ±.03 ±.010 ±2° |
| DO NOT SCALE DRAWING | |
| REV. | DESCRIPTION |
| A | PRODUCTION RELEASE |
| | DATE: 20MAY13 |
| | DRAWN: ZJC |

FREEMAN MARINE EQUIPMENT, INC.

CONFIDENTIAL PROPERTY OF FREEMAN MARINE EQUIPMENT, INC. UNLESS OTHERWISE SPECIFIED OR OTHERWISE INDICATED. THIS DOCUMENT IS THE PROPERTY OF FREEMAN MARINE EQUIPMENT, INC. AND SHALL BE RETURNED TO THE COMPANY UPON REQUEST. © ALL RIGHTS RESERVED 2013

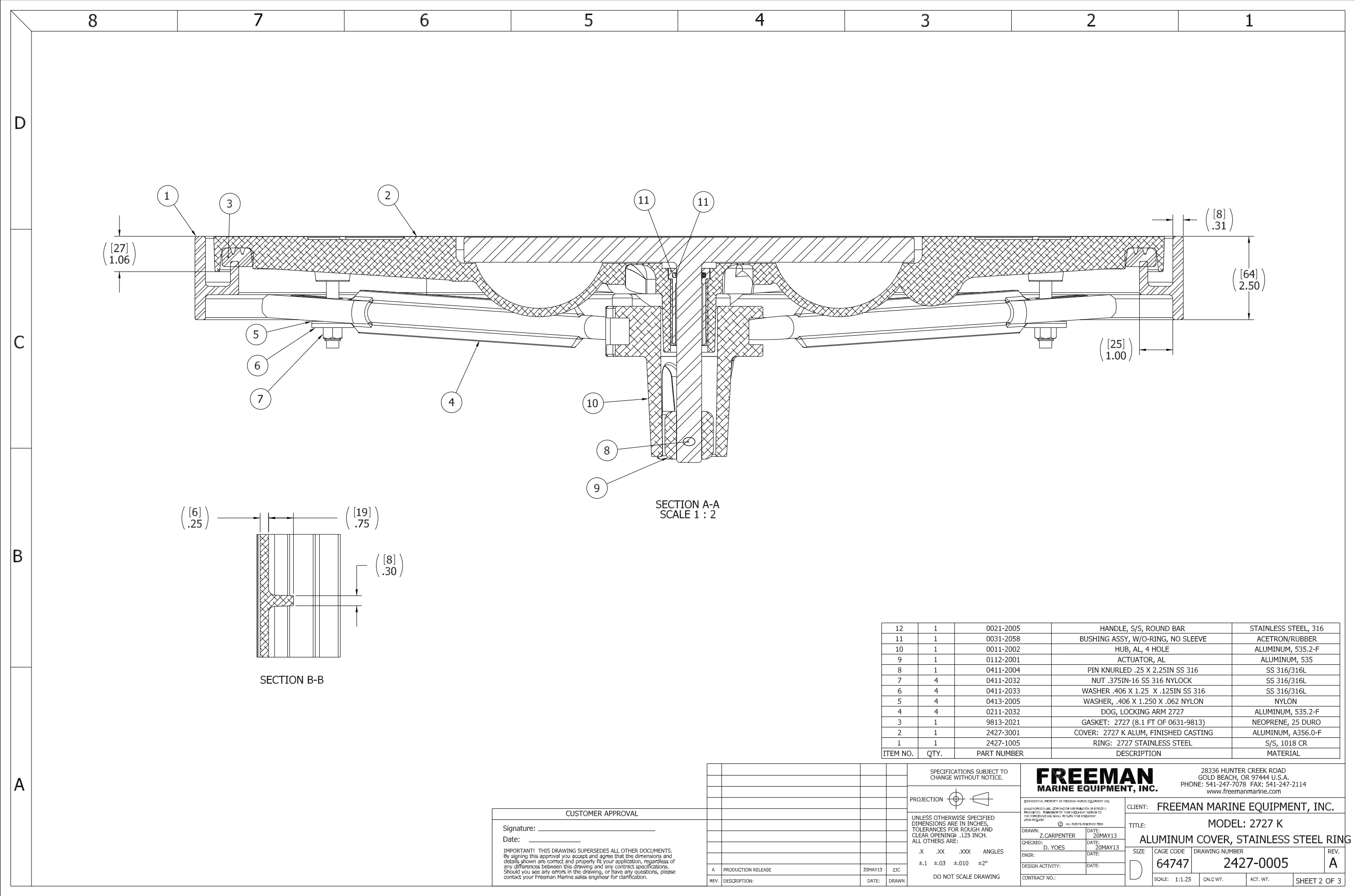
DRAWN: Z.CARPENTER DATE: 20MAY13
 CHECKED: D. YONES DATE: 20MAY13
 ENGR: DATE: _____
 DESIGN ACTIVITY: DATE: _____
 CONTRACT NO.: _____

28336 HUNTER CREEK ROAD
 GOLD BEACH, OR 97444 U.S.A.
 PHONE: 541-247-7078 FAX: 541-247-2114
 www.freemanmarine.com

CLIENT: FREEMAN MARINE EQUIPMENT, INC.

TITLE: MODEL: 2727 K
 ALUMINUM COVER, STAINLESS STEEL RING

| | | | |
|------------|-----------|----------------|--------------|
| SIZE | CAGE CODE | DRAWING NUMBER | REV. |
| D | 64747 | 2427-0005 | A |
| SCALE: 1:3 | CALC. WT. | ACT. WT. | SHEET 1 OF 3 |



SECTION A-A
SCALE 1 : 2

SECTION B-B

| ITEM NO. | QTY. | PART NUMBER | DESCRIPTION | MATERIAL |
|----------|------|-------------|--------------------------------------|----------------------|
| 12 | 1 | 0021-2005 | HANDLE, S/S, ROUND BAR | STAINLESS STEEL, 316 |
| 11 | 1 | 0031-2058 | BUSHING ASSY, W/O-RING, NO SLEEVE | ACETRON/RUBBER |
| 10 | 1 | 0011-2002 | HUB, AL, 4 HOLE | ALUMINUM, 535.2-F |
| 9 | 1 | 0112-2001 | ACTUATOR, AL | ALUMINUM, 535 |
| 8 | 1 | 0411-2004 | PIN KNURLED .25 X 2.25IN SS 316 | SS 316/316L |
| 7 | 4 | 0411-2032 | NUT .375IN-16 SS 316 NYLOCK | SS 316/316L |
| 6 | 4 | 0411-2033 | WASHER .406 X 1.25 X .125IN SS 316 | SS 316/316L |
| 5 | 4 | 0413-2005 | WASHER .406 X 1.250 X .062 NYLON | NYLON |
| 4 | 4 | 0211-2032 | DOG, LOCKING ARM 2727 | ALUMINUM, 535.2-F |
| 3 | 1 | 9813-2021 | GASKET: 2727 (8.1 FT OF 0631-9813) | NEOPRENE, 25 DURO |
| 2 | 1 | 2427-3001 | COVER: 2727 K ALUM, FINISHED CASTING | ALUMINUM, A356.0-F |
| 1 | 1 | 2427-1005 | RING: 2727 STAINLESS STEEL | S/S, 1018 CR |

CUSTOMER APPROVAL

Signature: _____
Date: _____

IMPORTANT! THIS DRAWING SUPERSEDES ALL OTHER DOCUMENTS. By signing this approval you accept and agree that the dimensions and details shown are correct and properly fit your application, regardless of any differences between this drawing and any contract specifications. Should you see any errors in the drawing, or have any questions, please contact your Freeman Marine sales engineer for clarification.

| REV. | DESCRIPTION | DATE | DRAWN |
|------|--------------------|---------|-------|
| A | PRODUCTION RELEASE | 20MAY13 | ZIC |

SPECIFICATIONS SUBJECT TO CHANGE WITHOUT NOTICE.

PROJECTION

UNLESS OTHERWISE SPECIFIED DIMENSIONS ARE IN INCHES. TOLERANCES FOR ROUGH AND CLEAR OPENINGS: .125 INCH. ALL OTHERS ARE:
.X .XX .XXX ANGLES
±.1 ±.03 ±.010 ±2°

DO NOT SCALE DRAWING

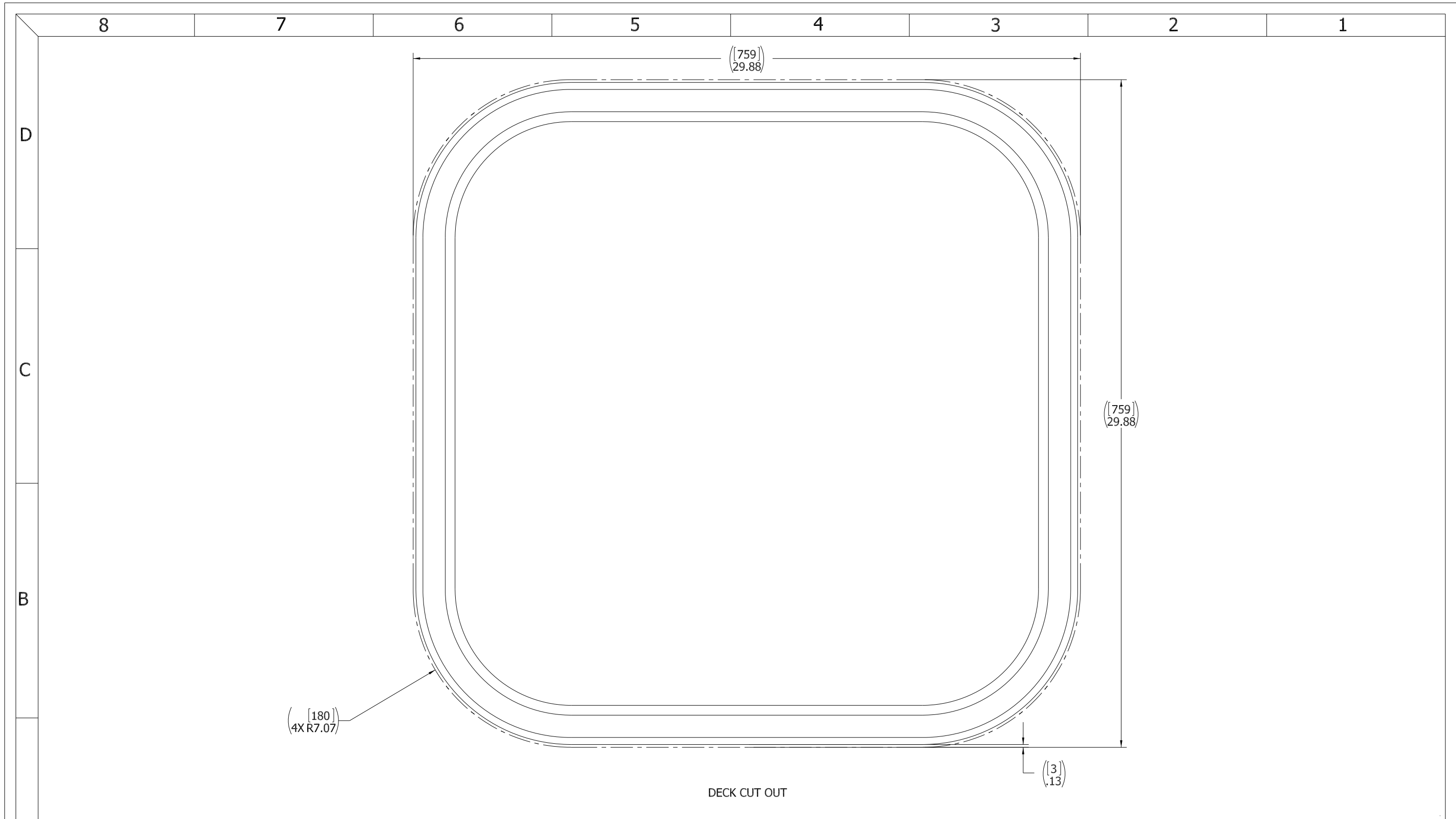
FREEMAN MARINE EQUIPMENT, INC.
28336 HUNTER CREEK ROAD
GOLD BEACH, OR 97444 U.S.A.
PHONE: 541-247-7078 FAX: 541-247-2114
www.freemanmarine.com

CLIENT: FREEMAN MARINE EQUIPMENT, INC.
TITLE: MODEL: 2727 K
ALUMINUM COVER, STAINLESS STEEL RING

DRAWN: Z.CARPENTER DATE: 20MAY13
CHECKED: D. YOES DATE: 20MAY13
ENGR: DATE:
DESIGN ACTIVITY: DATE:
CONTRACT NO.:

| | | | |
|------|-----------|----------------|------|
| SIZE | CAGE CODE | DRAWING NUMBER | REV. |
| D | 64747 | 2427-0005 | A |

SCALE: 1:1.25 CALC. WT. ACT. WT. SHEET 2 OF 3



- 3. FINISH: 125 RMS MAX.
- 2. BREAK SHARP EDGES AND DEBURR.
- 1. MATERIAL: AL COVER, MS RING

NOTES: UNLESS OTHERWISE SPECIFIED.

CUSTOMER APPROVAL

Signature: _____
 Date: _____

IMPORTANT! THIS DRAWING SUPERSEDES ALL OTHER DOCUMENTS. By signing this approval you accept and agree that the dimensions and details shown are correct and properly fit your application, regardless of any differences between this drawing and any contract specifications. Should you see any errors in the drawing, or have any questions, please contact your Freeman Marine sales engineer for clarification.

| REV. | DESCRIPTION | DATE | DRAWN |
|------|--------------------|---------|-------|
| A | PRODUCTION RELEASE | 20MAY13 | ZIC |

SPECIFICATIONS SUBJECT TO CHANGE WITHOUT NOTICE.

PROJECTION

UNLESS OTHERWISE SPECIFIED DIMENSIONS ARE IN INCHES. TOLERANCES FOR ROUGH AND CLEAR OPENINGS: .125 INCH. ALL OTHERS ARE:
 .X .XX .XXX ANGLES
 ±.1 ±.03 ±.010 ±2°

DO NOT SCALE DRAWING

| | | | |
|--|--|--|--|
| FREEMAN MARINE EQUIPMENT, INC. <small>CONFIDENTIAL PROPERTY OF FREEMAN MARINE EQUIPMENT, INC. QUALITY CONTROL USE. REPRODUCTION OR DISTRIBUTION IN STRICTLY PROHIBITED. ALL RIGHTS RESERVED. THE CAPACITY OF THIS DRAWING TO BE USED FOR ANY OTHER PURPOSE IS NOT INTENDED. ALL RIGHTS RESERVED 2012, FREEMAN MARINE EQUIPMENT, INC.</small> | | 28336 HUNTER CREEK ROAD GOLD BEACH, OR 97444 U.S.A. PHONE: 541-247-7078 FAX: 541-247-2114 www.freemanmarine.com | |
| | | CLIENT: FREEMAN MARINE EQUIPMENT, INC. | |
| DRAWN: Z.CARPENTER DATE: 20MAY13 CHECKED: D.YOES DATE: 20MAY13 ENGR: DATE: | | TITLE: MODEL: 2727 K ALUMINUM COVER, STAINLESS STEEL RING | |
| CONTRACT NO.: | | SIZE: D SCALE: 1:2 | CAGE CODE: 64747 DRAWING NUMBER: 2427-0005 ACT. WT.: |
| REV. A | | SHEET 3 OF 3 | |