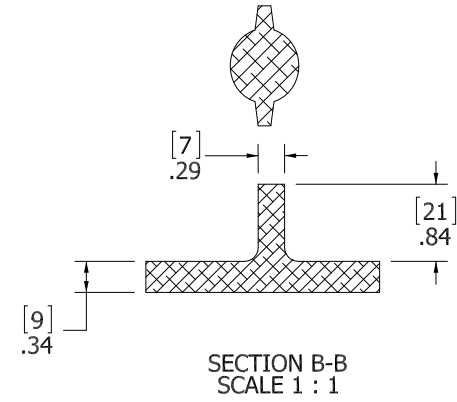


- 10. FOR SPECIFIC INFORMATION CONTACT SALES.
- 9. COMPLETE ASSEMBLY WEIGHT W/ DECK RING, 110LBS
- 8. DOGGING PRESSURE FULLY ADJUSTABLE.
- 7. HANDLE POSITION TOPSIDE INDICATES WHETHER DOGGING MECHANISM IS IN OPEN OR CLOSED POSITION.
- 6. ALUMINUM ALLOY MECHANISM SHOWN.
- 5. FLUSH, WATERTIGHT CONSTRUCTION.
- 4. INTEGRAL TOPSIDE "T" HANDLE STANDARD, OTHER TOPSIDE ACTUATION AVAILABLE.
- 3. MILD STEEL RING, RING CAN BE WELDED.
- 2. QUICK-ACTING, MECHANISM ENGAGES OR DISENGAGES IN QUARTER-TURN OF CENTER SPINDLE.
- 1. 36" X 36" CLEAR OPENING. ALL DIMENSIONS SHOWN SUBJECT TO CASTING VARIATION AND ARE REFERENCE ONLY.

NOTES: UNLESS OTHERWISE SPECIFIED.



A

CUSTOMER APPROVAL

Signature: _____

Date: _____

IMPORTANT! THIS DRAWING SUPERSEDES ALL OTHER DOCUMENTS. By signing this approval you accept and agree that the dimensions and details shown are correct and properly fit your application, regardless of any differences between this drawing and any contract specifications. Should you see any errors in the drawing, or have any questions, please contact your Freeman Marine sales engineer for clarification.

SPECIFICATIONS SUBJECT TO CHANGE WITHOUT NOTICE.		
PROJECTION		
UNLESS OTHERWISE SPECIFIED DIMENSIONS ARE IN INCHES. TOLERANCES FOR ROUGH AND CLEAR OPENINGS: .125 INCH. ALL OTHERS ARE:		
.X	.XX	.XXX ANGLES
±.1	±.03	±.010 ±2°
DO NOT SCALE DRAWING		
REV.	DESCRIPTION	DATE
A	PRODUCTION RELEASE	13MAY13 ZIC

FREEMAN MARINE EQUIPMENT, INC.

28336 HUNTER CREEK ROAD
GOLD BEACH, OR 97444 U.S.A.
PHONE: 541-247-7078 FAX: 541-247-2114
www.freemanmarine.com

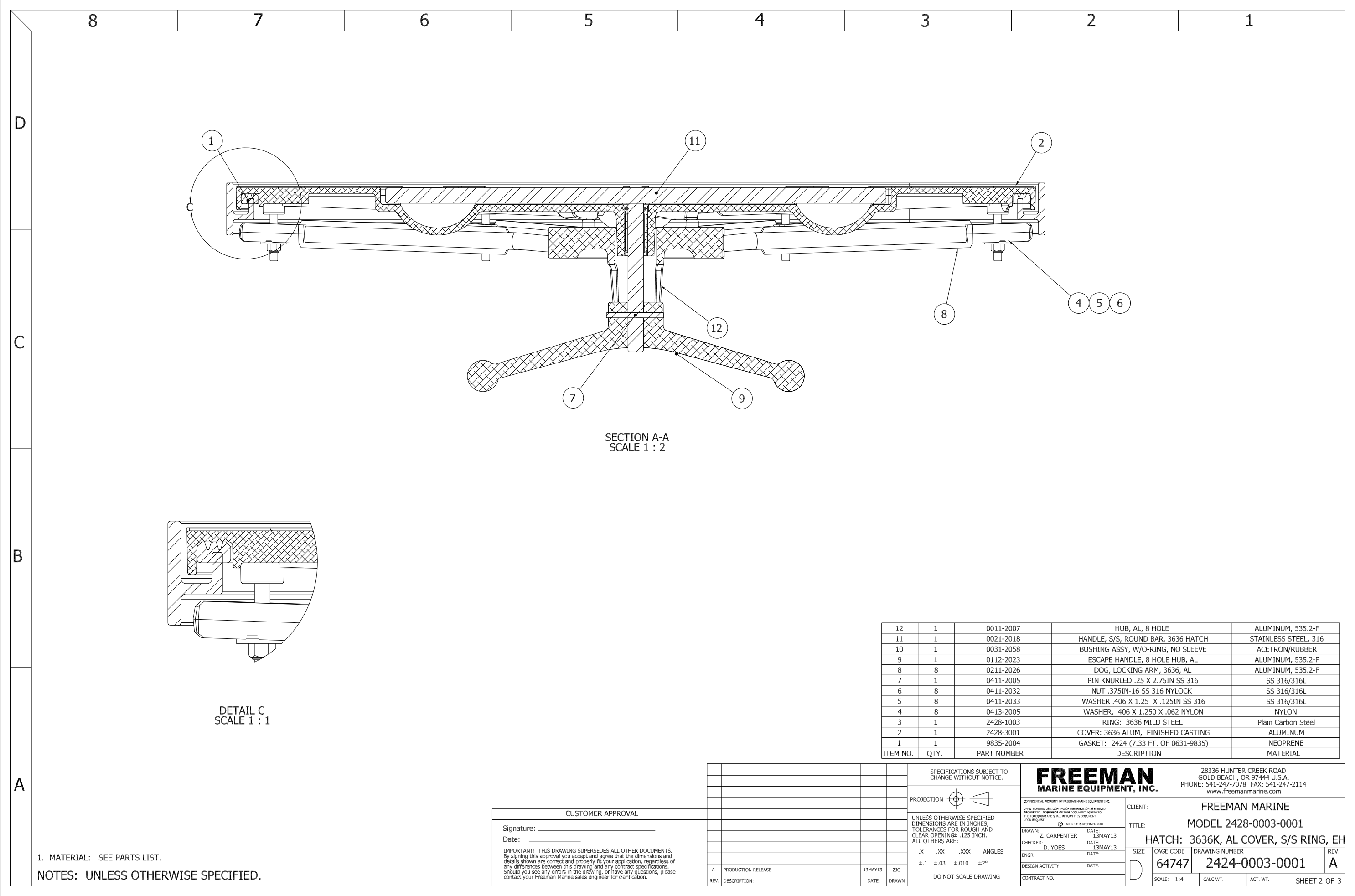
CLIENT: FREEMAN MARINE

TITLE: MODEL 2428-0003-0001

HATCH: 3636K, AL COVER, S/S RING, EH

SIZE	CAGE CODE	DRAWING NUMBER	REV.
D	64747	2428-0003-0001	A

SCALE: 1:4 CALC. WT. ACT. WT. SHEET 1 OF 3



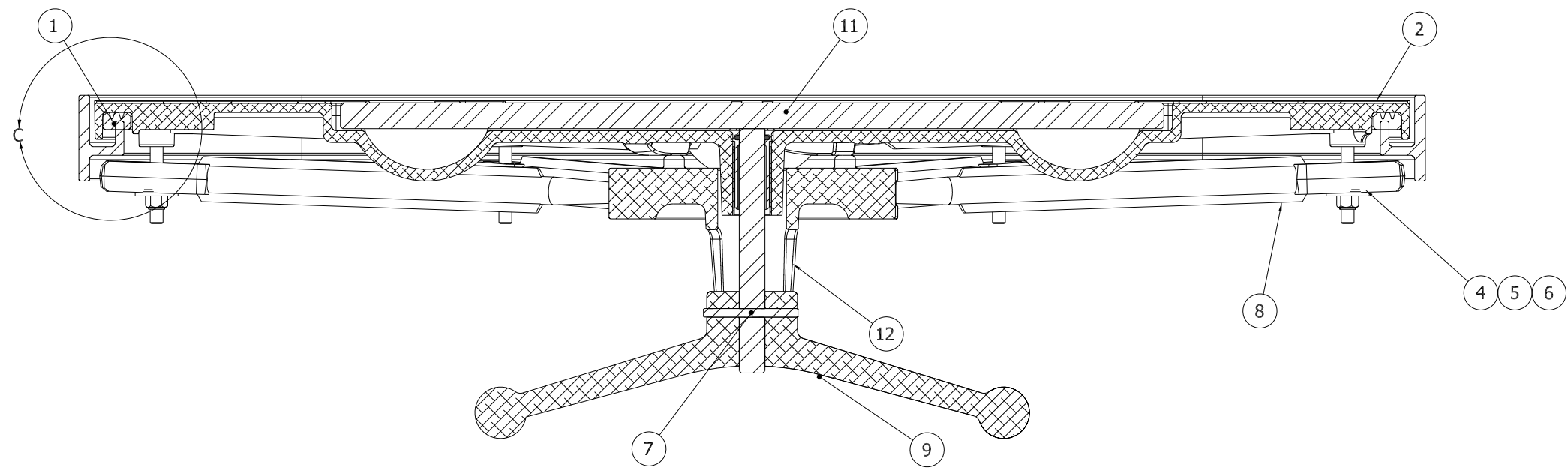
8 7 6 5 4 3 2 1

D

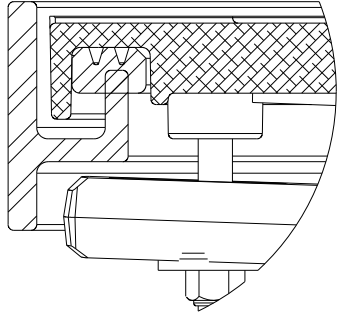
C

B

A



SECTION A-A
SCALE 1 : 2



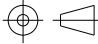
DETAIL C
SCALE 1 : 1

ITEM NO.	QTY.	PART NUMBER	DESCRIPTION	MATERIAL
12	1	0011-2007	HUB, AL, 8 HOLE	ALUMINUM, 535.2-F
11	1	0021-2018	HANDLE, S/S, ROUND BAR, 3636 HATCH	STAINLESS STEEL, 316
10	1	0031-2058	BUSHING ASSY, W/O-RING, NO SLEEVE	ACETRON/RUBBER
9	1	0112-2023	ESCAPE HANDLE, 8 HOLE HUB, AL	ALUMINUM, 535.2-F
8	8	0211-2026	DOG, LOCKING ARM, 3636, AL	ALUMINUM, 535.2-F
7	1	0411-2005	PIN KNURLED .25 X 2.75IN SS 316	SS 316/316L
6	8	0411-2032	NUT .375IN-16 SS 316 NYLOCK	SS 316/316L
5	8	0411-2033	WASHER .406 X 1.25 X .125IN SS 316	SS 316/316L
4	8	0413-2005	WASHER, .406 X 1.250 X .062 NYLON	NYLON
3	1	2428-1003	RING: 3636 MILD STEEL	Plain Carbon Steel
2	1	2428-3001	COVER: 3636 ALUM, FINISHED CASTING	ALUMINUM
1	1	9835-2004	GASKET: 2424 (7.33 FT. OF 0631-9835)	NEOPRENE

1. MATERIAL: SEE PARTS LIST.
NOTES: UNLESS OTHERWISE SPECIFIED.

CUSTOMER APPROVAL
Signature: _____
Date: _____
IMPORTANT! THIS DRAWING SUPERSEDES ALL OTHER DOCUMENTS. By signing this approval you accept and agree that the dimensions and details shown are correct and properly fit your application, regardless of any differences between this drawing and any contract specifications. Should you see any errors in the drawing, or have any questions, please contact your Freeman Marine sales engineer for clarification.

REV.	DESCRIPTION	DATE	DRAWN
A	PRODUCTION RELEASE	13MAY13	ZIC

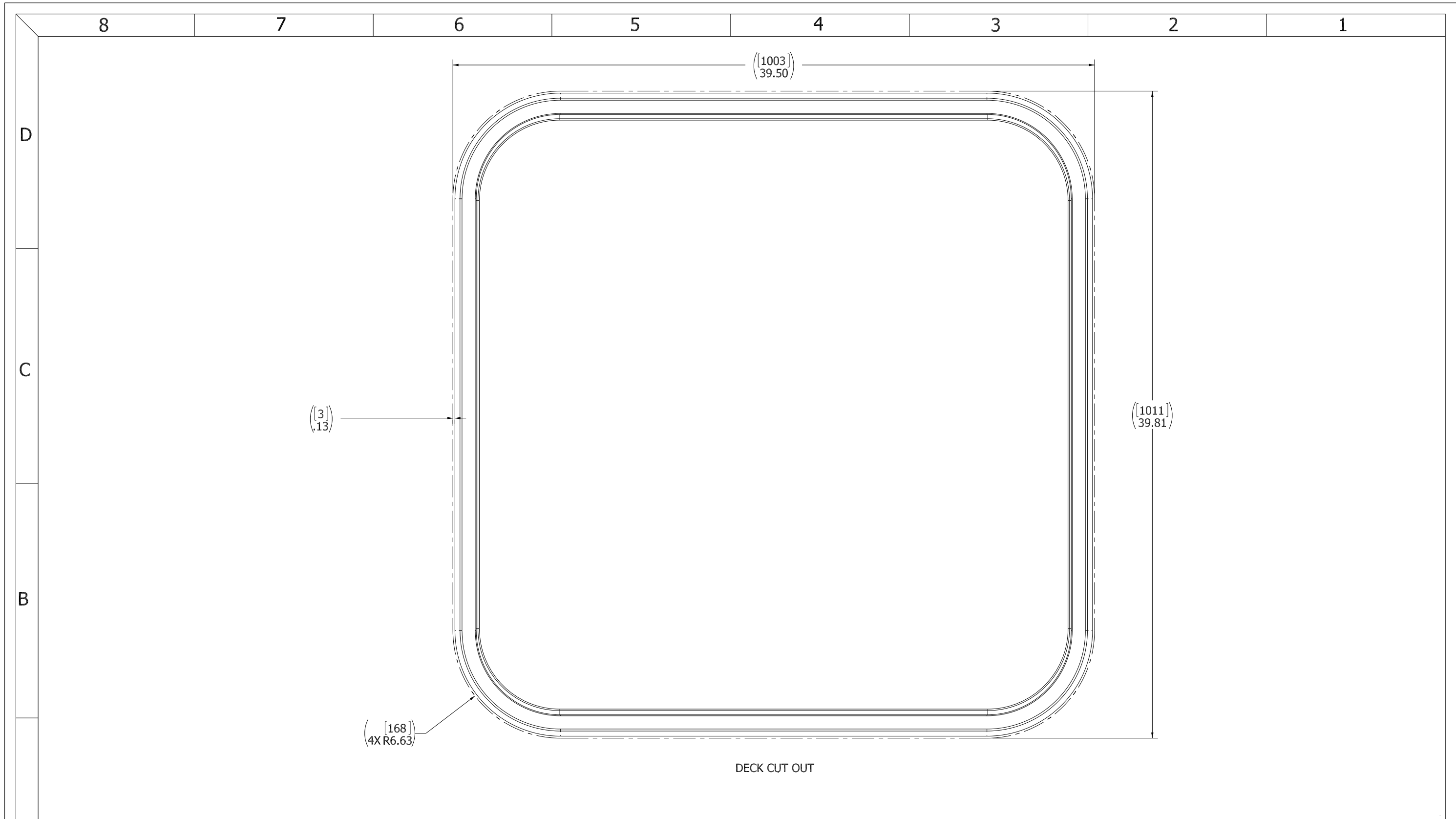
SPECIFICATIONS SUBJECT TO CHANGE WITHOUT NOTICE.
PROJECTION 
UNLESS OTHERWISE SPECIFIED DIMENSIONS ARE IN INCHES. TOLERANCES FOR ROUGH AND CLEAR OPENINGS: .125 INCH. ALL OTHERS ARE:
.X .XX .XXX ANGLES
±.1 ±.03 ±.010 ±2°
DO NOT SCALE DRAWING

FREEMAN MARINE EQUIPMENT, INC.
28336 HUNTER CREEK ROAD
GOLD BEACH, OR 97444 U.S.A.
PHONE: 541-247-7078 FAX: 541-247-2114
www.freemanmarine.com

CLIENT: FREEMAN MARINE
TITLE: MODEL 2428-0003-0001
HATCH: 3636K, AL COVER, S/S RING, EH

SIZE	CAGE CODE	DRAWING NUMBER	REV.
D	64747	2424-0003-0001	A

SCALE: 1:4 CALC. WT. ACT. WT. SHEET 2 OF 3



- 3. FINISH: 125 RMS MAX.
- 2. BREAK SHARP EDGES AND DEBURR.
- 1. MATERIAL: REF. S/A - B.O.M.

NOTES: UNLESS OTHERWISE SPECIFIED.

CUSTOMER APPROVAL

Signature: _____
 Date: _____

IMPORTANT! THIS DRAWING SUPERSEDES ALL OTHER DOCUMENTS. By signing this approval you accept and agree that the dimensions and details shown are correct and properly fit your application, regardless of any differences between this drawing and any contract specifications. Should you see any errors in the drawing, or have any questions, please contact your Freeman Marine sales engineer for clarification.

REV.	DESCRIPTION	DATE	DRAWN
A	PRODUCTION RELEASE	13MAY13	ZIC

SPECIFICATIONS SUBJECT TO CHANGE WITHOUT NOTICE.

PROJECTION

UNLESS OTHERWISE SPECIFIED DIMENSIONS ARE IN INCHES. TOLERANCES FOR ROUGH AND CLEAR OPENINGS: .125 INCH. ALL OTHERS ARE:
 .X .XX .XXX ANGLES
 ±.1 ±.03 ±.010 ±2°

DO NOT SCALE DRAWING

 28336 HUNTER CREEK ROAD GOLD BEACH, OR 97444 U.S.A. PHONE: 541-247-7078 FAX: 541-247-2114 www.freemanmarine.com		CLIENT: FREEMAN MARINE	
		TITLE: MODEL 2428-0003-0001	
DRAWN: Z. CARPENTER CHECKED: D. YOES ENGR: DESIGN ACTIVITY:	DATE: 13MAY13 DATE: 13MAY13 DATE:	SIZE: D CAGE CODE: 64747	DRAWING NUMBER: 2428-0003-0001
CONTRACT NO.:		SCALE: 1:2.75	CALC. WT. ACT. WT. SHEET 3 OF 3