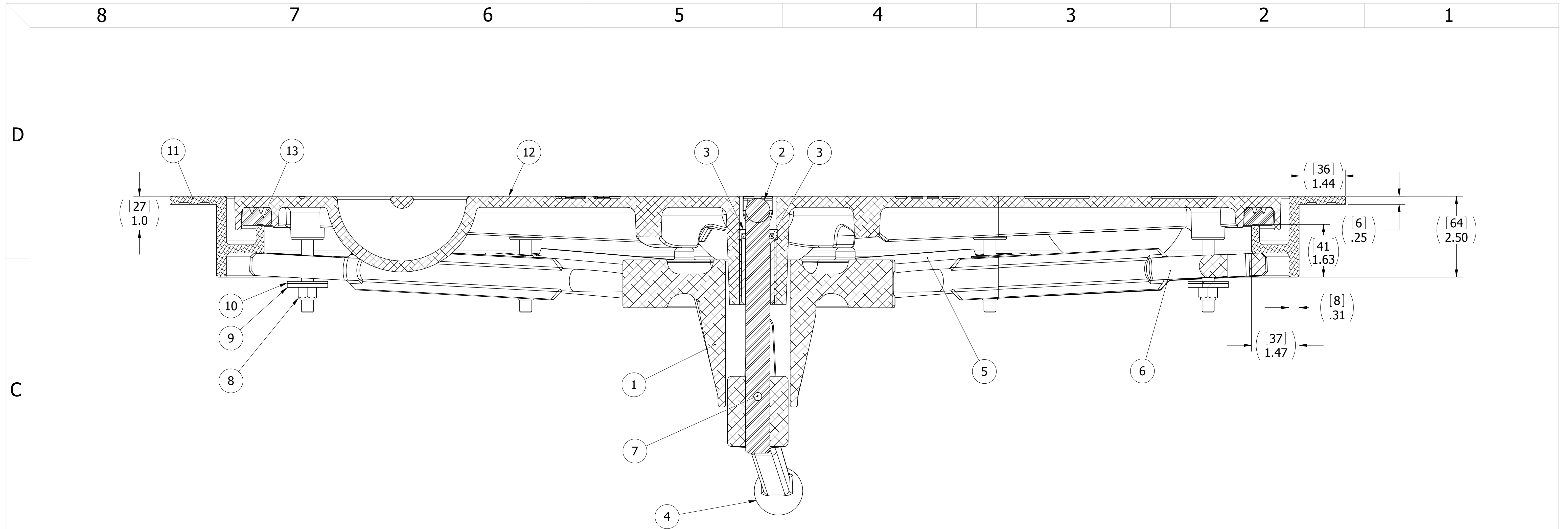


10. FOR SPECIFIC INFORMATION CONTACT SALES.
9. COMPLETE ASSEMBLY WEIGHT W/ DECK RING, 89.5LBS/ 40.6K.
8. DOGGING PRESSURE FULLY ADJUSTABLE.
7. HANDLE POSITION TOPSIDE INDICATES WHETHER DOGGING MECHANISM IS IN OPEN OR CLOSED POSITION.
6. ALUMINUM ALLOY MECHANISM SHOWN.
5. FLUSH, WATERTIGHT CONSTRUCTION.
4. INTEGRAL TOPSIDE "T" HANDLE STANDARD, OTHER TOPSIDE ACTUATION AVAILABLE. ESCAPE HANDLE INCLUDED.
3. CAST ALUMINUM ALLOY FLANGE, FLANGE CAN BE DRILLED FOR BOLTED INSTALLATIONS OR WELDED TO ALUMINUM.
2. QUICK-ACTING, MECHANISM ENGAGES OR DISENGAGES IN QUARTER-TURN OF CENTER SPINDLE.
1. 30.5 X 36.5 CLEAR OPENING, ALL DIMENSIONS SHOWN SUBJECT TO CASTING/BENDING VARIATION AND ARE REFERENCE ONLY.

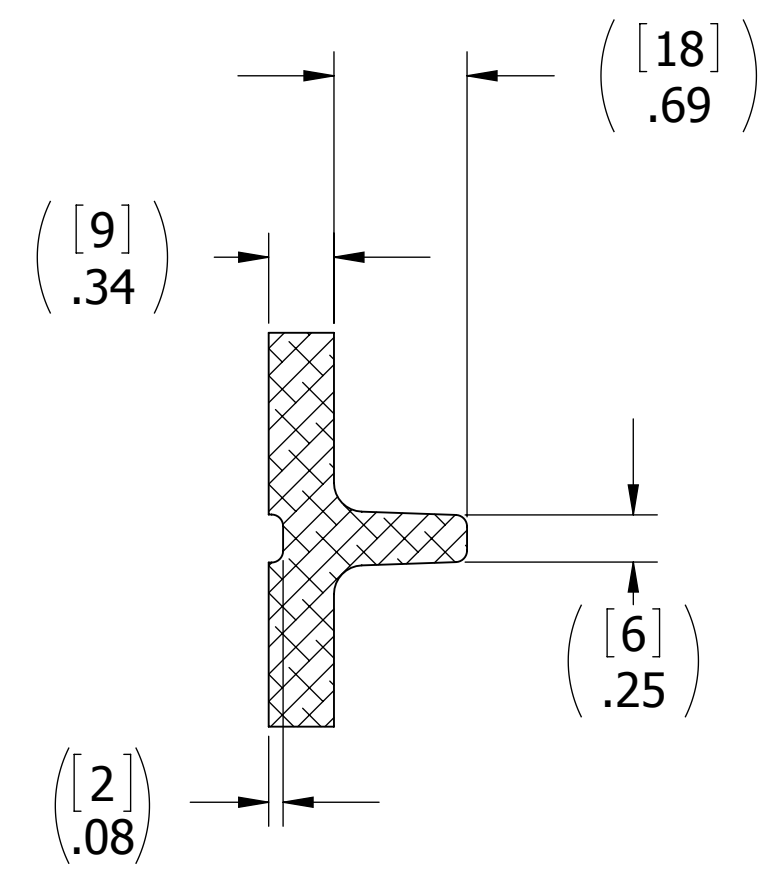
NOTES: UNLESS OTHERWISE SPECIFIED.

A

SPECIFICATIONS SUBJECT TO CHANGE WITHOUT NOTICE.		FREEMAN MARINE EQUIPMENT, INC. 28336 HUNTER CREEK ROAD GOLD BEACH, OR 97444 U.S.A. PHONE: 541-247-7078 FAX: 541-247-2114 www.freemanmarine.com	
UNLESS OTHERWISE SPECIFIED DIMENSIONS ARE IN INCHES, TOLERANCES FOR ROUGH AND CLEAR OPENING ± .125 INCH. ALL OTHERS ARE: .X .XX .XXX ANGLES ±.1 ±.03 ±.010 ±2°		CLIENT: FREEMAN MARINE EQUIPMENT, INC.	
PROJECTION		TITLE: HATCH: 3036K, AL COVER, AL RING, EH	
DO NOT SCALE DRAWING		SIZE: D CAGE CODE: 64747 DRAWING NUMBER: 2429-0002-0001 REV. A	
REV. DESCRIPTION: DATE: DRAWN		SCALE: 1:4 CALC. WT. ACT. WT. SHEET 1 OF 3	



SECTION A-A
SCALE 1 : 2



SECTION B-B
SCALE 1 : 1

ITEM NO.	QTY.	PART NUMBER	DESCRIPTION	MATERIAL
13	1	9813-2022	GASKET, 3036ALR(10.8" OF 0631-9813)	NEOPRENE
12	1	2429-3001	COVER, 3036 ALUM, FINISHED CASTING	ALUMINUM
11	1	2429-1002	RING, 3036, ALUM	ALUMINUM
10	8	0413-2005	WASHER, .406 X 1.250 X .062 NYLON	NYLON
9	8	0411-2033	WASHER .406 X 1.25 X .125IN SS 316	SS, 316
8	8	0411-2032	NUT .375IN-16 SS 316 NYLOCK	SS, 316
7	1	0411-2005	PIN KNURLED .25 X 2.75IN SS 316	SS 316/316L
6	4	0211-2030	DOG, LOCKING ARM 3036, AL, 15	ALUMINUM, 535.2-F
5	4	0211-2026	DOG, LOCKING ARM, 3636, AL	ALUMINUM, 535.2-F
4	1	0112-2023	ESCAPE HANDLE, 8 HOLE HUB, AL	ALUMINUM, 535.2-F
3	1	0031-2058	BUSHING ASSY, W/O-RING, NO SLEEVE	ACETRON/RUBBER
2	1	0021-2018	HANDLE, S/S, ROUND BAR, 3636 HATCH	STAINLESS STEEL, 316
1	1	0011-2007	HUB, AL, 8 HOLE	ALUMINUM, 535.2-F

REV.	DESCRIPTION	DATE	DRAWN
-	INITIAL RELEASE	01SEP09	MRS
A	UPDATE GEN NOTES & B.O.M.	01AUG11	PPC

SPECIFICATIONS SUBJECT TO CHANGE WITHOUT NOTICE.

PROJECTION

UNLESS OTHERWISE SPECIFIED DIMENSIONS ARE IN INCHES, TOLERANCES FOR ROUGH AND CLEAR OPENING ± .125 INCH. ALL OTHERS ARE:

.X	.XX	.XXX	ANGLES
±.1	±.03	±.010	±2°

DO NOT SCALE DRAWING

FREEMAN MARINE EQUIPMENT, INC.

28336 HUNTER CREEK ROAD
GOLD BEACH, OR 97444 U.S.A.
PHONE: 541-247-7078 FAX: 541-247-2114
www.freemanmarine.com

CLIENT: FREEMAN MARINE EQUIPMENT, INC.

TITLE: HATCH: 3036K, AL COVER, AL RING, EH

SIZE: 64747
CAGE CODE: 2429-0002-0001
DRAWING NUMBER: A

SCALE: 1:1.5
CALC WT.
ACT. WT.
SHEET 2 OF 3

CONTRACT NO.:

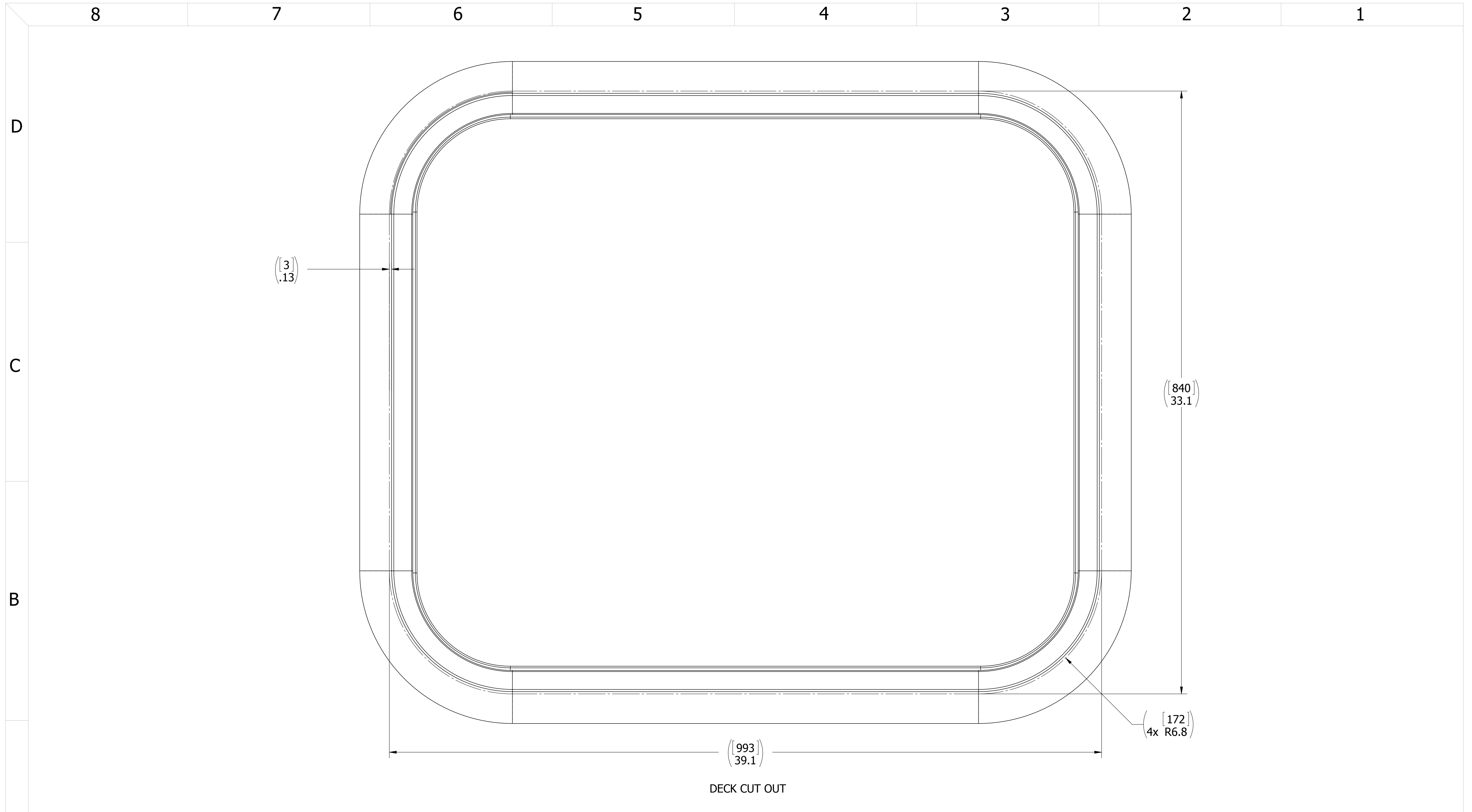
CONFIDENTIAL PROPERTY OF FREEMAN MARINE EQUIPMENT INC. UNAUTHORIZED USE, COPYING OR DISTRIBUTION IS STRICTLY PROHIBITED. POSSESSION OF THIS DOCUMENT AGREES TO THE FOREGOING AND SHALL RETURN THIS DOCUMENT UPON REQUEST.

© ALL RIGHTS RESERVED 2004

DRAWN: M.STENDER
CHECKED: R.REESE
ENGR:

DATE: 01SEP09
DATE: 21FEB12
DATE:

A



- 3. FINISH: 125 RMS MAX.
 - 2. BREAK SHARP EDGES AND DEBURR.
 - 1. MATERIAL: REF. S/A - B.O.M.
- NOTES: UNLESS OTHERWISE SPECIFIED.

CUSTOMER APPROVAL

Signature: _____
 Date: _____

IMPORTANT! THIS DRAWING SUPERSEDES ALL OTHER DOCUMENTS. By signing this approval you accept and agree that the dimensions and details shown are correct and properly fit your application, regardless of any differences between this drawing and any contract specifications. Should you see any errors in the drawing, or have any questions, please contact your Freeman Marine sales engineer for clarification.

REV.	DESCRIPTION	DATE	DRAWN
-	INITIAL RELEASE	01SEP09	MRS
A	UPDATE GEN NOTES & B.O.M.	01AUG11	PPC

SPECIFICATIONS SUBJECT TO CHANGE WITHOUT NOTICE.

PROJECTION

UNLESS OTHERWISE SPECIFIED DIMENSIONS ARE IN INCHES, TOLERANCES FOR ROUGH AND CLEAR OPENING ± .125 INCH. ALL OTHERS ARE:

.X	.XX	.XXX	ANGLES
±.1	±.03	±.010	±2°

DO NOT SCALE DRAWING

FREEMAN
MARINE EQUIPMENT, INC.

CONFIDENTIAL PROPERTY OF FREEMAN MARINE EQUIPMENT, INC. UNAUTHORIZED USE, REPRODUCTION OR DISTRIBUTION IS STRICTLY PROHIBITED. ALL COPIES REMAIN THE PROPERTY OF FREEMAN MARINE EQUIPMENT, INC. AND MUST BE RETURNED UPON REQUEST.

© ALL RIGHTS RESERVED 2012, FREEMAN MARINE EQUIPMENT, INC.

28336 HUNTER CREEK ROAD
 GOLD BEACH, OR 97444 U.S.A.
 PHONE: 541-247-7078 FAX: 541-247-2114
 www.freemanmarine.com

CLIENT: FREEMAN MARINE EQUIPMENT, INC.	
TITLE: HATCH: 3036K, AL COVER, AL RING, EH	
SIZE: D	DRAWING NUMBER: 2429-0002-0001
CAGE CODE: 64747	REV: A
SCALE: 1:2.5	SHEET 3 OF 3