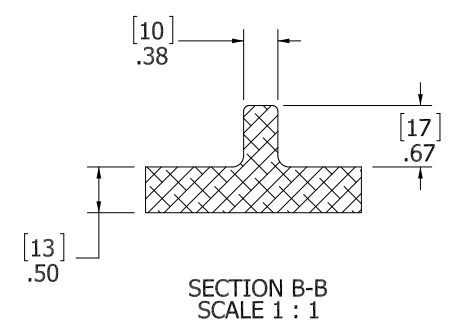


- 10. FOR SPECIFIC INFORMATION CONTACT SALES.
- 9. COMPLETE ASSEMBLY WEIGHT W/ DECK RING, 38LBS/ 17.2K.
- 8. DOGGING PRESSURE FULLY ADJUSTABLE.
- 7. HANDLE POSITION TOPSIDE INDICATES WHETHER DOGGING MECHANISM IS IN OPEN OR CLOSED POSITION.
- 6. ALUMINUM ALLOY MECHANISM SHOWN.
- 5. FLUSH, WATERTIGHT CONSTRUCTION.
- 4. INTEGRAL TOPSIDE "T" HANDLE STANDARD, OTHER TOPSIDE ACTUATION AVAILABLE.
- 3. M/S CAN BE WELDED.
- 2. QUICK-ACTING, MECHANISM ENGAGES OR DISENGAGES IN QUARTER-TURN OF CENTER SPINDLE.
- 1. 18" DIAMETER CLEAR OPENING, ALL DIMENSIONS SHOWN SUBJECT TO CASTING VARIATION AND ARE REFERENCE ONLY.

NOTES: UNLESS OTHERWISE SPECIFIED.



CUSTOMER APPROVAL

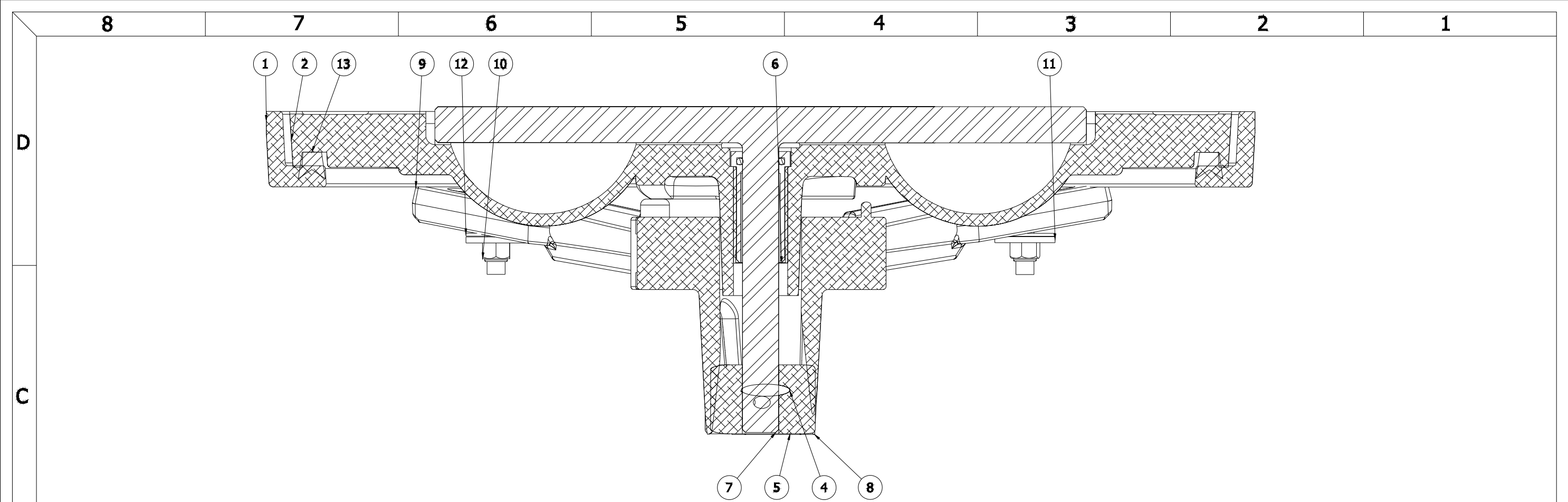
Signature: _____

Date: _____

IMPORTANT! THIS DRAWING SUPERCEDES ALL OTHER DOCUMENTS. By signing this approval you accept and agree that the dimensions and details shown are correct and properly fit your application, regardless of any differences between this drawing and any contract specifications. Should you see any errors in the drawing, or have any questions, please contact your Freeman Marine sales engineer for clarification.

SPECIFICATIONS SUBJECT TO CHANGE WITHOUT NOTICE.	
PROJECTION	
UNLESS OTHERWISE SPECIFIED DIMENSIONS ARE IN INCHES. TOLERANCES FOR ROUGH AND CLEAR OPENING: .125 INCH. ALL OTHERS ARE:	
.X	.XX .XXX ANGLES
±.1	±.03 ±.010 ±2°
DO NOT SCALE DRAWING	
REV.	DESCRIPTION:
A	PRODUCTION RELEASE
	DATE: 02DEC14
	DRAWN: ZIC

FREEMAN MARINE EQUIPMENT, INC.		28336 HUNTER CREEK ROAD GOLD BEACH, OR 97444 U.S.A. PHONE: 541-247-7078 FAX: 541-247-2114 www.freemanmarine.com	
CONFIDENTIAL PROPERTY OF FREEMAN MARINE EQUIPMENT, INC. UNLESS OTHERWISE SPECIFIED. ALL RIGHTS RESERVED. THIS DRAWING IS THE PROPERTY OF FREEMAN MARINE EQUIPMENT, INC. AND IS NOT TO BE REPRODUCED OR COPIED WITHOUT WRITTEN PERMISSION.		CLIENT: FREEMAN MARINE	
DRAWN: Z CARPENTER DATE: 02DEC14 CHECKED: D DETTMER DATE: 02DEC14 ENGR: DATE: DESIGN ACTIVITY: DATE: CONTRACT NO.:		TITLE: 18" ROUND HINGED ALUM. MILD STEEL DECK RING	
SIZE: D	CAGE CODE: 64747	DRAWING NUMBER: 2441-0003	REV. A
SCALE: 1:4	CALC. WT.	ACT. WT.	SHEET 1 OF 2



SECTION A-A
SCALE 1 : 1

ITEM NO.	QTY.	PART NUMBER	DESCRIPTION	MATERIAL
13	1	9801-2006	GASKET: 18 (4.5 FT. OF 0631-9801)	NEOPRENE
12	4	0413-2005	WASHER .406 X 1.250 X .062 NYLON	NYLON
11	4	0411-2033	WASHER .406 X 1.25 X .125IN SS 316	SS 316/316L
10	4	0411-2032	NUT .375IN-16 SS 316 NYLOCK	SS 316/316L
9	4	0211-2005	DOG, LOCKING ARM	ALUMINUM, 535.2-F
8	1	0011-2002	HUB, AL, 4 HOLE	ALUMINUM, 535.2-F
7	1	0021-2005	HANDLE, S/S, ROUND BAR	STAINLESS STEEL, 316
6	1	0031-2058	BUSHING ASSY, W/O-RING, NO SLEEVE	ACETRON/RUBBER
5	1	0112-2001	ACTUATOR, AL	ALUMINUM, 535
4	1	0411-2004	PIN KNURLED .25 X 2.25IN SS 316	SS 316/316L
3	2	0461-2205	HINGE ASSY, DOUBLE-ACTING, CAST HATCH,2	REF S/A - B.O.M.
2	1	2441-3001	COVER, MODEL 24 H	ALUMINUM
1	1	2442-1002	RING: 18-H	STEEL

- 3. FINISH: 125 RMS MAX.
 - 2. BREAK SHARP EDGES AND DEBURR.
 - 1. MATERIAL:
- NOTES: UNLESS OTHERWISE SPECIFIED.**

CUSTOMER APPROVAL

Signature: _____
Date: _____

IMPORTANT! THIS DRAWING SUPERSEDES ALL OTHER DOCUMENTS. By signing this approval you accept and agree that the dimensions and details shown are correct and properly fit your application, regardless of any differences between this drawing and any contract specifications. Should you see any errors in the drawing, or have any questions, please contact your Freeman Marine sales-engineer for clarification.

REV.	DESCRIPTION	DATE	DRAWN
A	PRODUCTION RELEASE	02DEC14	ZFC

SPECIFICATIONS SUBJECT TO CHANGE WITHOUT NOTICE.

PROJECTION

UNLESS OTHERWISE SPECIFIED DIMENSIONS ARE IN INCHES. TOLERANCES FOR ROUGH AND CLEAR OPENINGS: .125 INCH. ALL OTHERS ARE:
X XX XXX ANGLES
±.1 ±.05 ±.010 ±.2

DO NOT SCALE DRAWING

FREEMAN MARINE EQUIPMENT, INC.

© 2014 Freeman Marine Equipment, Inc. All rights reserved. Freeman Marine Equipment, Inc. is a registered trademark of Freeman Marine Equipment, Inc.

28336 HUNTER CREEK ROAD
GOLD BEACH, OR 97444 U.S.A.
PHONE: 541-247-7078 FAX: 541-247-2114
www.freemarinmarine.com

CLIENT: **FREEMAN MARINE**

TITLE: **18" ROUND HINGED ALUM. MILD STEEL DECK RING**

SIZE: **D** CAGE CODE: **64747** DRAWING NUMBER: **2441-0003** REV. **A**

SCALE: 1:4 SALE WT. ACT. WT. SHEET 2 OF 2