

10. FOR SPECIFIC INFORMATION CONTACT SALES.
9. COMPLETE ASSEMBLY WEIGHT W/ DECK RING, 47.2LBS/ 21.4K.
8. DOGGING PRESSURE FULLY ADJUSTABLE.
7. HANDLE POSITION TOPSIDE INDICATES WHETHER DOGGING MECHANISM IS IN OPEN OR CLOSED POSITION.
6. ALUMINUM ALLOY MECHANISM SHOWN.
5. FLUSH, WATERTIGHT CONSTRUCTION.
4. INTEGRAL TOPSIDE "T" HANDLE STANDARD, OTHER TOPSIDE ACTUATION AVAILABLE.
3. MILD STEEL COAMING FOR WELD IN APPLICATION.
2. QUICK-ACTING, MECHANISM ENGAGES OR DISENGAGES IN QUARTER-TURN OF CENTER SPINDLE.
1. 18.2" DIAMETER CLEAR OPENING, ALL DIMENSIONS SHOWN SUBJECT TO CASTING VARIATION AND ARE REFERENCE ONLY.
- NOTES: UNLESS OTHERWISE SPECIFIED.

REV.	DESCRIPTION	DATE	DRAWN
-	INITIAL RELEASE	14MAY10	MRS
A	SIZE CHANGED TO REFLECT AS-BUILT	22JUL11	SAS
B	UPDATE GEN NOTE & BDM.	22AUG11	PPC

SPECIFICATIONS SUBJECT TO CHANGE WITHOUT NOTICE.

PROJECTION

UNLESS OTHERWISE SPECIFIED DIMENSIONS ARE IN INCHES. TOLERANCES FOR ROUGH AND CLEAR OPENING ± .125 INCH. ALL OTHERS ARE:

.X .XX .XXX ANGLES ±.1 ±.03 ±.010 ±2°

DO NOT SCALE DRAWING

**FREEMAN MARINE EQUIPMENT, INC.**

28336 HUNTER CREEK ROAD  
GOLD BEACH, OR 97444 U.S.A.  
PHONE: 541-247-7078 FAX: 541-247-2114  
www.freemarine.com

CONFIDENTIAL PROPERTY OF FREEMAN MARINE EQUIPMENT, INC. UNAUTHORIZED USE, COPYING OR REPRODUCTION IS STRICTLY PROHIBITED. POSSESSION OF THIS DOCUMENT GRANTS NO RIGHTS AND SHALL RETURN THIS DOCUMENT UPON REQUEST. © ALL RIGHTS RESERVED 2014

CLIENT: FREEMAN MARINE

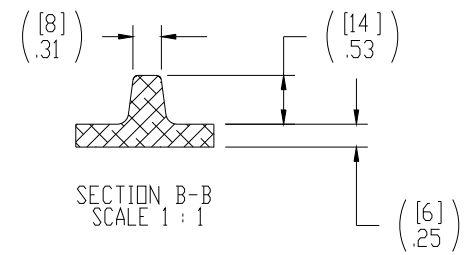
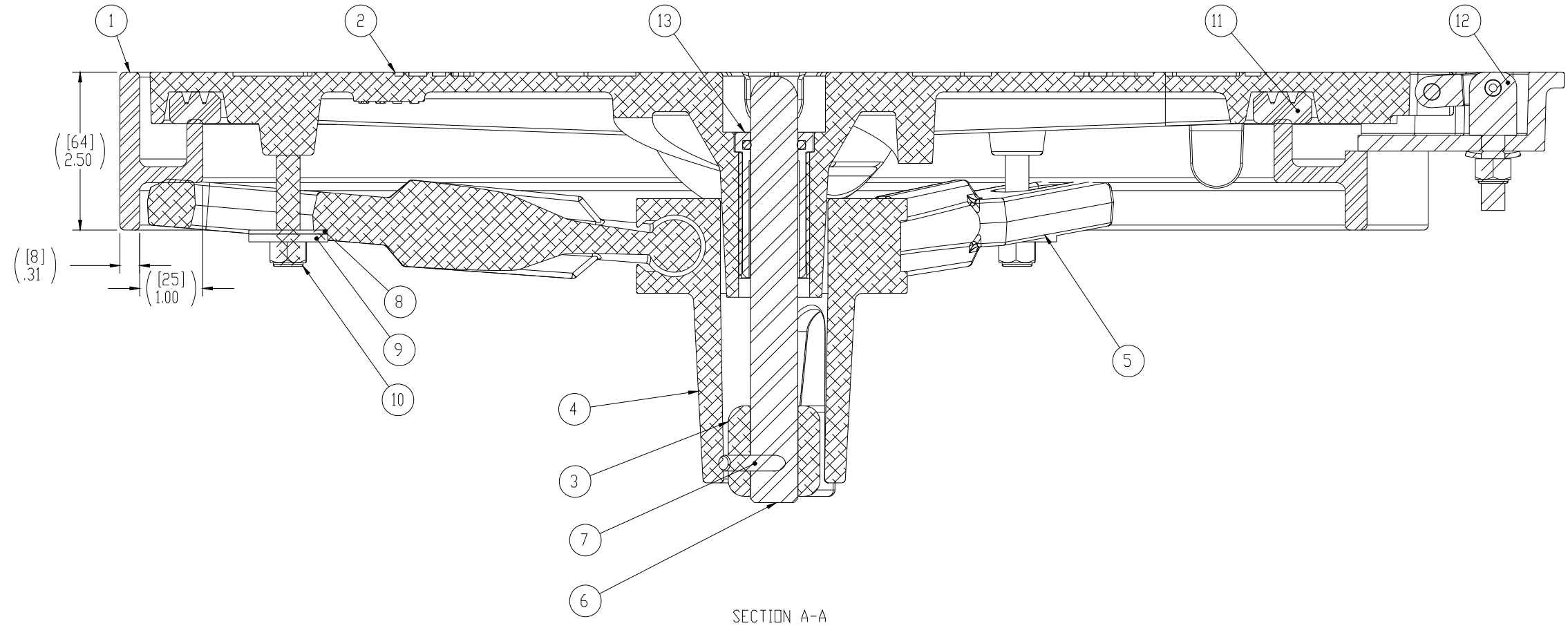
TITLE: HATCH: 18-H K, AL COVER, MS RING

SIZE: D CAGE CODE: 64747 DRAWING NUMBER: 2442-0003 REV. B

SCALE: 1:2 CALC. WT. ACT. WT. SHEET 1 OF 3

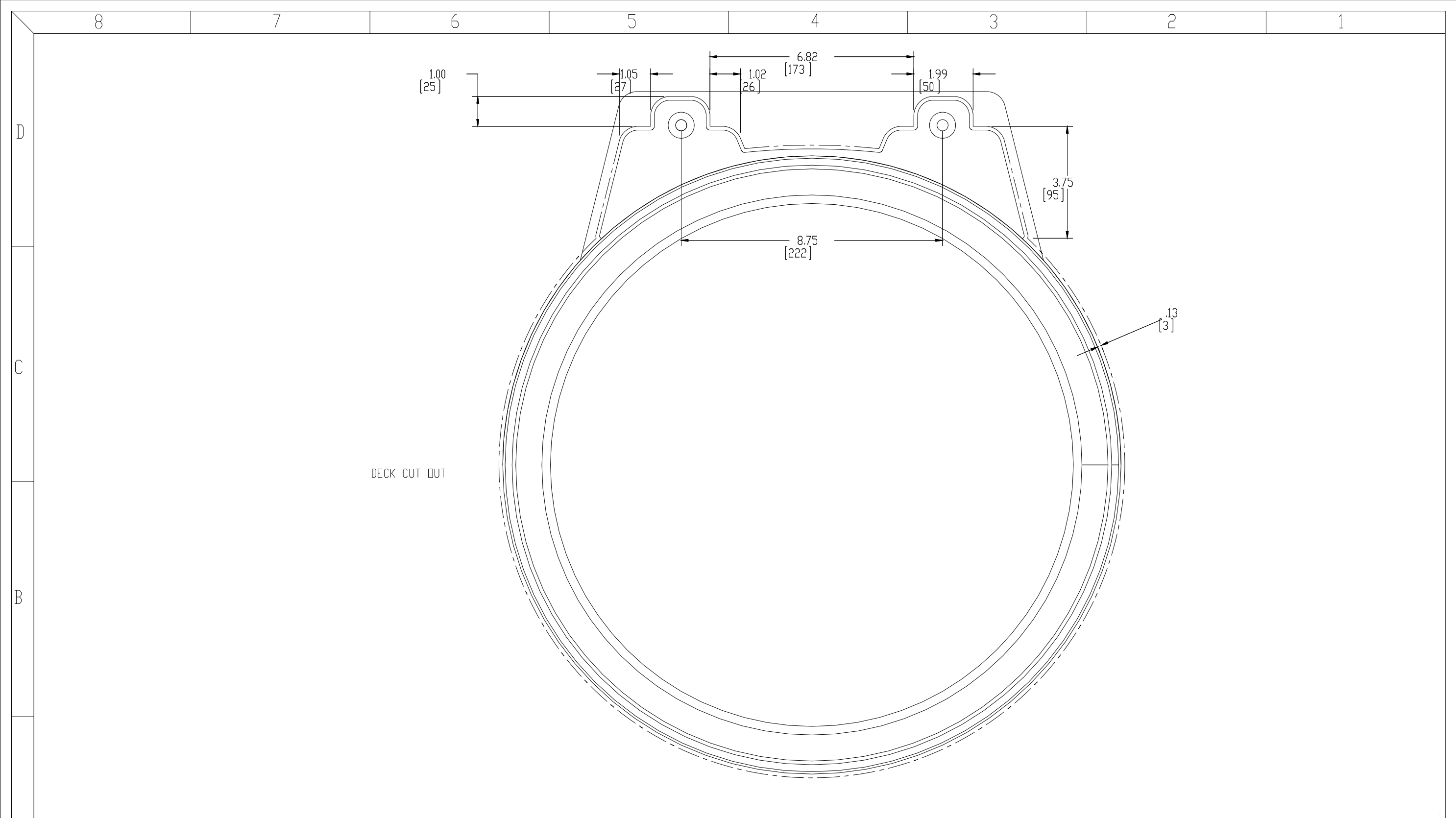
8 7 6 5 4 3 2 1

D  
C  
B  
A



ITEM NO.	QTY.	PART NUMBER	DESCRIPTION	MATERIAL
13	1	0031-2058	BUSHING ASSY, W/ O-RING, NO SLEEVE	ACETRON/RUBBER
12	2	0461-2205	HINGE ASSY, DOUBLE-ACTING, CAST HATCH,2	REF S/A - B.O.M.
11	1	9810-2009	GASKET: 18K (HINGE,4.94 FT. 0631-9810)ST	NEOPRENE
10	3	0411-2032	LOCKNUT, NYLON INSERT, 3/8-16, 316 S/S	STAINLESS STEEL, 316
9	3	0411-2033	WASHER, .406 X 1.25 X .125, 316 S/S	STAINLESS STEEL, 316
8	3	0413-2005	WASHER, .406 X 1.250 X .062 NYLON	NYLON
7	1	0411-2004	PIN, KNURLED, 1/4 X 2-1/4, 316 S/S	STAINLESS STEEL, 316L
6	1	0021-2005	HANDLE, S/S, ROUND BAR	STAINLESS STEEL, 316
5	3	0211-2005	DOG, LOCKING ARM	ALUMINUM, 535,2-F
4	1	0011-2001	HUB, 3 HOLE	ALUMINUM, 535,2-F
3	1	0112-2001	ACTUATOR, AL	ALUMINUM, 535
2	1	2442-3001	COVER, HINGED 18 K	REF. S/A - B.O.M.
1	1	2442-1003	RING: 18-H K	MILD STEEL

SPECIFICATIONS SUBJECT TO CHANGE WITHOUT NOTICE.		<b>FREEMAN MARINE EQUIPMENT, INC.</b> 28336 HUNTER CREEK ROAD GOLD BEACH, OR 97444 U.S.A. PHONE: 541-247-7078 FAX: 541-247-2114 WWW.FREEMANMARINE.COM	
PROJECTION		CLIENT: FREEMAN MARINE	
UNLESS OTHERWISE SPECIFIED DIMENSIONS ARE IN INCHES. TOLERANCES FOR ROUGH AND CLEAR OPENING ± .125 INCH. ALL OTHERS ARE:		TITLE: HATCH: 18-H K, AL COVER, MS RING	
X XX XXX ANGLES ±.1 ±.03 ±.010 ±2*		DRAWN: M. STENDER DATE: 14MAY10 CHECKED: D. YOE DATE: 19MAY12 ENGR: DATE: DESIGN ACTIVITY: DATE: CONTRACT NO:	
DO NOT SCALE DRAWING		SIZE: D 64747 DRAWING NUMBER: 2442-0003 REV. B	
- INITIAL RELEASE 14MAY10 MRS A SIZE CHANGED TO REFLECT AS-BUILT 22JUL11 SAS B UPDATE GEN NOTE & B.O.M. 22AUG11 PPC		SCALE: 1:1 CALC. WT. ACT. WT. SHEET 2 OF 3	



- 3. FINISH: 125 RMS MAX.
  - 2. BREAK SHARP EDGES AND DEBURR.
  - 1. MATERIAL: REF. S/A - B.O.M.
- NOTES: UNLESS OTHERWISE SPECIFIED.

CUSTOMER APPROVAL

Signature: \_\_\_\_\_  
 Date: \_\_\_\_\_

IMPORTANT! THIS DRAWING SUPERSEDES ALL OTHER DOCUMENTS. By signing this approval you accept and agree that the dimensions and details shown are correct and properly fit your application, regardless of any differences between this drawing and any contract specifications. Should you see any errors in the drawing, or have any questions, please contact your Freeman Marine sales engineer for clarification.

REV.	DESCRIPTION	DATE	DRAWN
-	INITIAL RELEASE	14MAY10	MRS
A	SIZE CHANGED TO REFLECT AS-BUILT	22JUL11	SAS
B	UPDATE GEN NOTE & B.O.M.	22AUG11	PPC

SPECIFICATIONS SUBJECT TO CHANGE WITHOUT NOTICE.

PROJECTION

UNLESS OTHERWISE SPECIFIED DIMENSIONS ARE IN INCHES. TOLERANCES FOR ROUGH AND CLEAR OPENING ± .125 INCH. ALL OTHERS ARE:

.X	.XX	.XXX	ANGLES
±.1	±.03	±.010	±2°

DO NOT SCALE DRAWING

<b>FREEMAN MARINE EQUIPMENT, INC.</b> <small>CONFIDENTIAL PROPERTY OF FREEMAN MARINE EQUIPMENT, INC. UNLESS OTHERWISE SPECIFIED. ALL RIGHTS RESERVED 2012. FREEMAN MARINE EQUIPMENT, INC. IS NOT RESPONSIBLE FOR ANY DAMAGE TO PROPERTY OR PERSONS. © ALL RIGHTS RESERVED 2012. FREEMAN MARINE EQUIPMENT, INC.</small>		28336 HUNTER CREEK ROAD GOLD BEACH, OR 97444 U.S.A. PHONE: 541-247-7078 FAX: 541-247-2114 WWW.FREEMANMARINE.COM	
		CLIENT:	FREEMAN MARINE
DRAWN: M. STENDER DATE: 14MAY10 CHECKED: D. YDES DATE: 19MAR12 ENGR: DATE: DESIGN ACTIVITY: DATE: CONTRACT NO:		TITLE:	HATCH: 18-H K, AL COVER, MS RING
SIZE:	D	CAGE CODE:	64747
DRAWING NUMBER:	2442-0003	REV.:	B
SCALE:	2:3	CALC. WT.:	ACT. WT.:
			SHEET 3 OF 3