

- 10. FOR SPECIFIC INFORMATION CONTACT SALES.
- 9. COMPLETE ASSEMBLY WEIGHT W/ DECK RING, 58.8LBS/ 26.7K.
- 8. DOGGING PRESSURE FULLY ADJUSTABLE.
- 7. HANDLE POSITION TOPSIDE INDICATES WHETHER DOGGING MECHANISM IS IN OPEN OR CLOSED POSITION.
- 6. ALUMINUM ALLOY MECHANISM SHOWN.
- 5. FLUSH, WATERTIGHT CONSTRUCTION.
- 4. INTEGRAL TOPSIDE "T" HANDLE STANDARD, OTHER TOPSIDE ACTUATION AVAILABLE.
- 3. CAST ALUMINUM ALLOY FLANGE, FLANGE CAN BE DRILLED FOR BOLTED INSTALLATIONS OR WELDED TO ALUMINUM.
- 2. QUICK-ACTING, MECHANISM ENGAGES OR DISENGAGES IN QUARTER-TURN OF CENTER SPINDLE.
- 1. 24.1" DIAMETER CLEAR OPENING, ALL DIMENSIONS SHOWN SUBJECT TO CASTING VARIATION AND ARE REFERENCE ONLY.

NOTES: UNLESS OTHERWISE SPECIFIED.

CUSTOMER APPROVAL

Signature: _____

Date: _____

IMPORTANT! THIS DRAWING SUPERSEDES ALL OTHER DOCUMENTS. By signing this approval you accept and agree that the dimensions and details shown are correct and properly fit your application, regardless of any differences between this drawing and any contract specifications. Should you see any errors in the drawing, or have any questions, please contact your Freeman Marine sales engineer for clarification.

REV.	DESCRIPTION	DATE	DRAWN
-	INITIAL RELEASE	09JUN10	GJM
A	UPDATE GEN. NOTES & B.O.M	23AUG11	PPC

SPECIFICATIONS SUBJECT TO CHANGE WITHOUT NOTICE.

PROJECTION

UNLESS OTHERWISE SPECIFIED DIMENSIONS ARE IN INCHES. TOLERANCES FOR ROUGH AND CLEAR OPENINGS: .125 INCH. ALL OTHERS ARE:

.X .XX .XXX ANGLES
±.1 ±.03 ±.010 ±2°

DO NOT SCALE DRAWING

FREEMAN MARINE EQUIPMENT, INC.

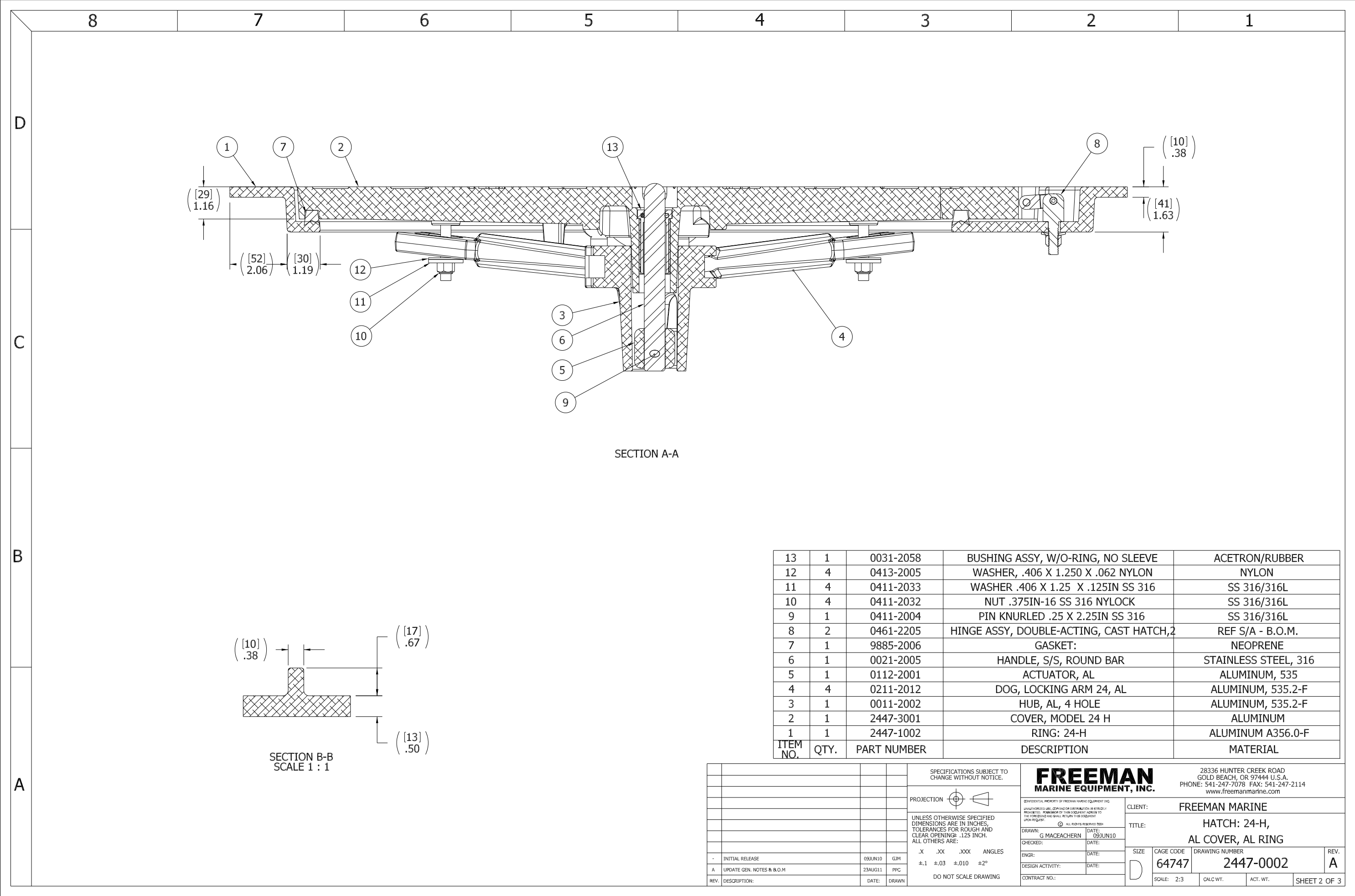
28336 HUNTER CREEK ROAD
GOLD BEACH, OR 97444 U.S.A.
PHONE: 541-247-7078 FAX: 541-247-2114
www.freemanmarine.com

CLIENT: FREEMAN MARINE

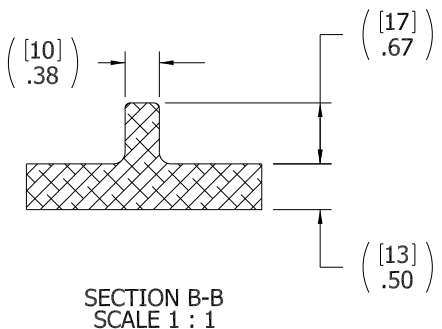
TITLE: HATCH: 24-H,
AL COVER, AL RING

SIZE: D CAGE CODE: 64747 DRAWING NUMBER: 2447-0002 REV. A

SCALE: 1:3 CALC. WT. ACT. WT. SHEET 1 OF 3

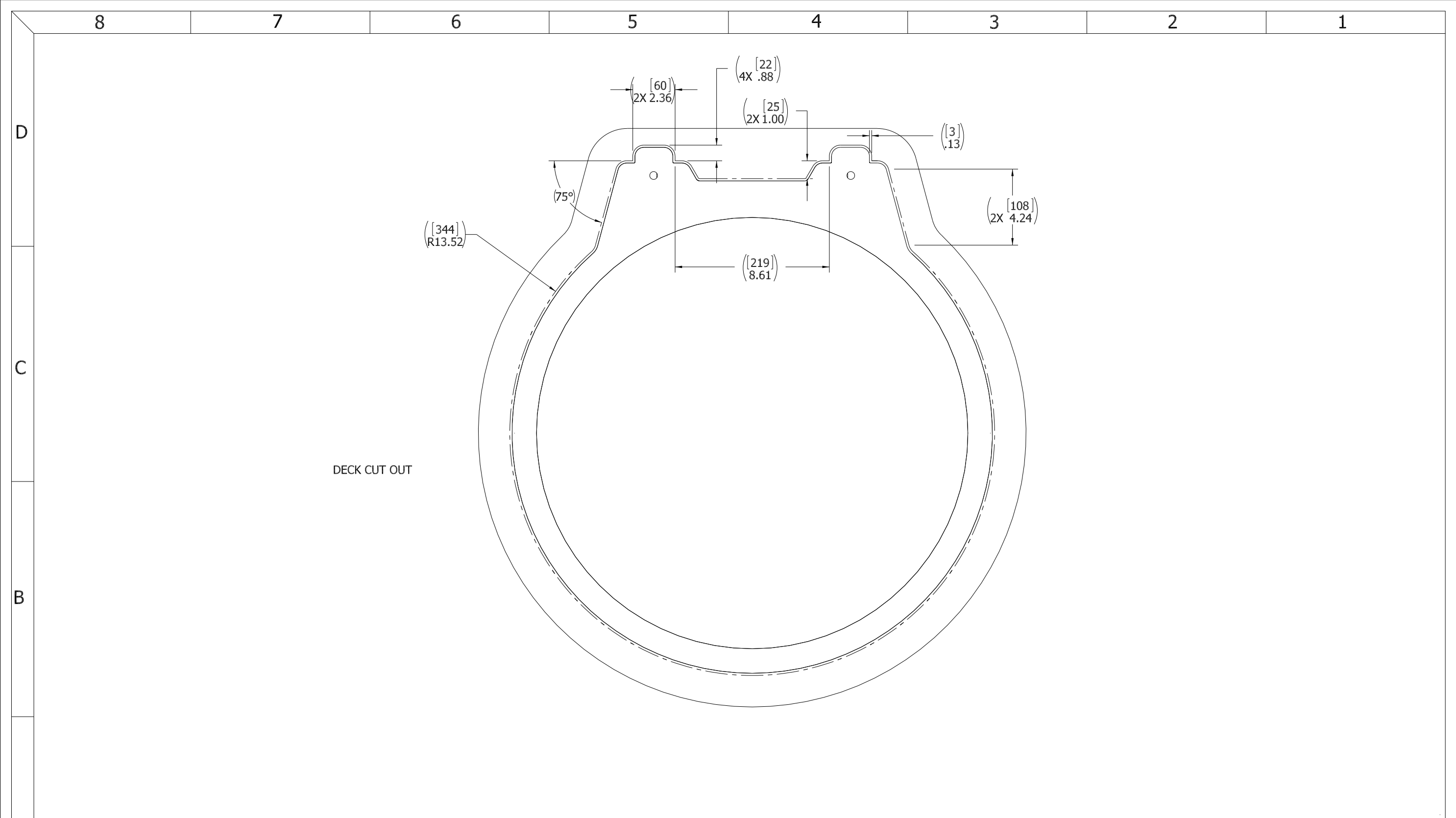


SECTION A-A



ITEM NO.	QTY.	PART NUMBER	DESCRIPTION	MATERIAL
13	1	0031-2058	BUSHING ASSY, W/O-RING, NO SLEEVE	ACETRON/RUBBER
12	4	0413-2005	WASHER, .406 X 1.250 X .062 NYLON	NYLON
11	4	0411-2033	WASHER .406 X 1.25 X .125IN SS 316	SS 316/316L
10	4	0411-2032	NUT .375IN-16 SS 316 NYLOCK	SS 316/316L
9	1	0411-2004	PIN KNURLED .25 X 2.25IN SS 316	SS 316/316L
8	2	0461-2205	HINGE ASSY, DOUBLE-ACTING, CAST HATCH,2	REF S/A - B.O.M.
7	1	9885-2006	GASKET:	NEOPRENE
6	1	0021-2005	HANDLE, S/S, ROUND BAR	STAINLESS STEEL, 316
5	1	0112-2001	ACTUATOR, AL	ALUMINUM, 535
4	4	0211-2012	DOG, LOCKING ARM 24, AL	ALUMINUM, 535.2-F
3	1	0011-2002	HUB, AL, 4 HOLE	ALUMINUM, 535.2-F
2	1	2447-3001	COVER, MODEL 24 H	ALUMINUM
1	1	2447-1002	RING: 24-H	ALUMINUM A356.0-F

SPECIFICATIONS SUBJECT TO CHANGE WITHOUT NOTICE.		FREEMAN MARINE EQUIPMENT, INC. 28336 HUNTER CREEK ROAD GOLD BEACH, OR 97444 U.S.A. PHONE: 541-247-7078 FAX: 541-247-2114 www.freemanmarine.com	
PROJECTION		CLIENT: FREEMAN MARINE	
UNLESS OTHERWISE SPECIFIED DIMENSIONS ARE IN INCHES. TOLERANCES FOR ROUGH AND CLEAR OPENINGS: .125 INCH. ALL OTHERS ARE: .X .XX .XXX ANGLES ±.1 ±.03 ±.010 ±2°		TITLE: HATCH: 24-H, AL COVER, AL RING	
DO NOT SCALE DRAWING		DRAWN: G MACEACHERN DATE: 09JUN10 CHECKED: DATE: ENGR: DATE: DESIGN ACTIVITY: DATE: CONTRACT NO.:	
- INITIAL RELEASE 09JUN10 GJM A UPDATE GEN. NOTES & B.O.M. 23AUG11 PPC		SIZE: D CAGE CODE: 64747 DRAWING NUMBER: 2447-0002 REV. A SCALE: 2:3 CALC. WT. ACT. WT. SHEET 2 OF 3	



DECK CUT OUT

- 3. FINISH: 125 RMS MAX.
- 2. BREAK SHARP EDGES AND DEBURR.
- 1. MATERIAL: REF. S/A - B.O.M.

NOTES: UNLESS OTHERWISE SPECIFIED.

CUSTOMER APPROVAL

Signature: _____
Date: _____

IMPORTANT! THIS DRAWING SUPERSEDES ALL OTHER DOCUMENTS. By signing this approval you accept and agree that the dimensions and details shown are correct and properly fit your application, regardless of any differences between this drawing and any contract specifications. Should you see any errors in the drawing, or have any questions, please contact your Freeman Marine sales engineer for clarification.

REV.	DESCRIPTION:	DATE:	DRAWN:
-	INITIAL RELEASE	09JUN10	GJM
A	UPDATE GEN. NOTES & B.O.M.	23AUG11	PPC

SPECIFICATIONS SUBJECT TO CHANGE WITHOUT NOTICE.



UNLESS OTHERWISE SPECIFIED DIMENSIONS ARE IN INCHES. TOLERANCES FOR ROUGH AND CLEAR OPENINGS: .125 INCH. ALL OTHERS ARE:

.X .XX .XXX ANGLES
±.1 ±.03 ±.010 ±2°

DO NOT SCALE DRAWING

FREEMAN
MARINE EQUIPMENT, INC.

28336 HUNTER CREEK ROAD
GOLD BEACH, OR 97444 U.S.A.
PHONE: 541-247-7078 FAX: 541-247-2114
www.freemanmarine.com

CONFIDENTIAL PROPERTY OF FREEMAN MARINE EQUIPMENT, INC.
UNLESS OTHERWISE SPECIFIED, THIS DRAWING IS THE PROPERTY OF FREEMAN MARINE EQUIPMENT, INC. AND SHALL BE RETURNED UPON REQUEST.
© ALL RIGHTS RESERVED 2012, FREEMAN MARINE EQUIPMENT, INC.

CLIENT: FREEMAN MARINE
TITLE: HATCH: 24-H,
AL COVER, AL RING
DRAWN: G MACEACHERN DATE: 09JUN10
CHECKED: DATE:
ENGR: DATE:
DESIGN ACTIVITY: DATE:
CONTRACT NO.:

SIZE	CAGE CODE	DRAWING NUMBER	REV.
D	64747	2447-0002	A
SCALE: 1:2.5	CALC. WT.	ACT. WT.	SHEET 3 OF 3