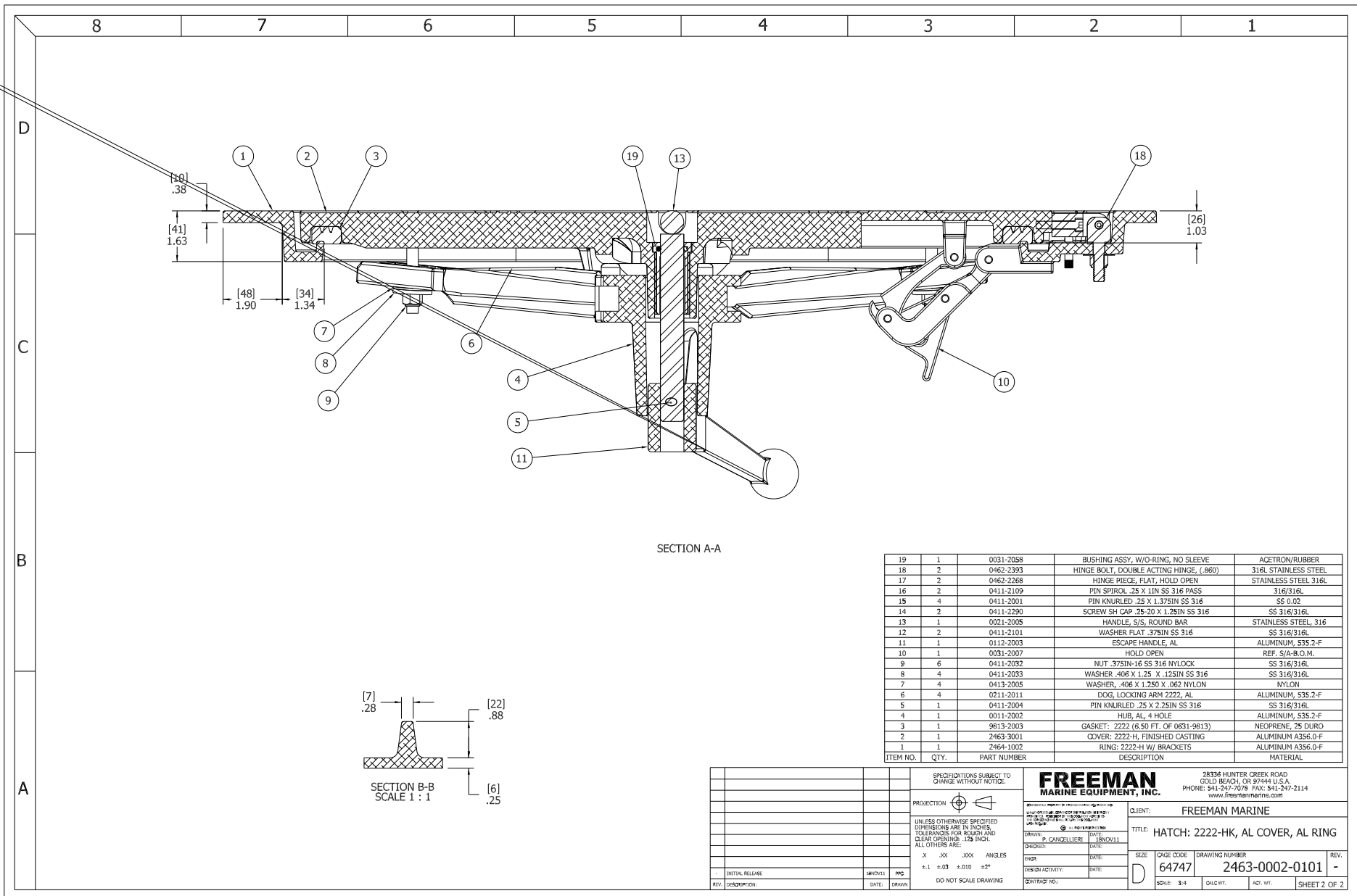
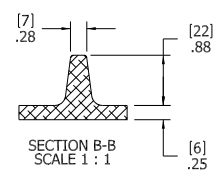


10. FOR SPECIFIC INFORMATION CONTACT SALES.
9. COMPLETE ASSEMBLY WEIGHT W/ DECK RING, 54.2LBS/ 24.5K.
8. DOGGING PRESSURE FULLY ADJUSTABLE.
7. HANDLE POSITION TOPSIDE INDICATES WHETHER DOGGING MECHANISM IS IN OPEN OR CLOSED POSITION.
6. ALUMINUM ALLOY MECHANISM SHOWN.
5. FLUSH, WATERTIGHT CONSTRUCTION.
4. INTEGRAL TOPSIDE "T" HANDLE STANDARD, OTHER TOPSIDE ACTUATION AVAILABLE.
3. CAST ALUMINUM ALLOY FLANGE, FLANGE CAN BE DRILLED FOR BOLTED INSTALLATIONS OR WELDED TO ALUMINUM.
2. QUICK-ACTING, MECHANISM ENGAGES OR DISENGAGES IN QUARTER-TURN OF CENTER SPINDLE.
1. 22.2" X 22.2" CLEAR OPENING, ALL DIMENSIONS SHOWN SUBJECT TO CASTING VARIATION AND ARE REFERENCE ONLY.
- NOTES: UNLESS OTHERWISE SPECIFIED.

SPECIFICATIONS SUBJECT TO CHANGE WITHOUT NOTICE.		FREEMAN MARINE EQUIPMENT, INC.		28336 HUNTER CREEK ROAD GOLD BEACH, OR 97444 U.S.A. PHONE: 541-247-7078 FAX: 541-247-2114 www.freemanmarine.com	
PROJECTION		DRAWN: R. CANCELLIERI DATE: 1/18/2011		CLIENT: FREEMAN MARINE	
UNLESS OTHERWISE SPECIFIED DIMENSIONS ARE IN INCHES. TOLERANCES FOR ROUGH AND CLEAR OPENING: .125 INCH. ALL OTHERS ARE:		CHECKED: DATE:		TITLE: HATCH: 2222-HK, AL COVER, AL RING	
.X .XX .XXX ANGLES ±.1 ±.03 ±.010 ±.2°		ENGR: DATE:		SIZE: D	
DO NOT SCALE DRAWING		DESIGN ACTIVITY: DATE:		DRAWING NUMBER: 2463-0002-0101	
INITIAL RELEASE: SHOWN: PND	DATE: DRAWN:	CONTRACT NO.:	SCALE: 1:3	QWC.VT.	ADP.VT.
REV. DESCRIPTION:	DATE:				SHEET 1 OF 2



ITEM NO.	QTY.	PART NUMBER	DESCRIPTION	MATERIAL
19	1	0031-2058	BUSHING ASSY, W/O-RING, NO SLEEVE	ACETRON/RUBBER
18	2	0462-2393	HINGE BOLT, DOUBLE ACTING HINGE, (.860)	316L STAINLESS STEEL
17	2	0462-2368	HINGE PIECE, FLAT, HOLD OPEN	STAINLESS STEEL 316L
16	2	0411-2109	PIN SPIRAL .25 X .1IN SS 316 PASS	316/316L
15	4	0411-2001	PIN KNURLED .25 X 1.375IN SS 316	SS 0.02
14	2	0411-2290	SCREW SH CAP .25-20 X 1.25IN SS 316	SS 316/316L
13	1	0021-2005	HANDLE, S/S, ROUND BAR	STAINLESS STEEL, 316
12	2	0411-2101	WASHER FLAT .375IN SS 316	SS 316/316L
11	1	0112-2003	ESCAPE HANDLE, AL	ALUMINUM, 535.2-F
10	1	0031-2007	HOLD OPEN	REF. 51A-B 0.1M.
9	6	0411-2032	NUT .375IN-16 SS 316 NYLOCK	SS 316/316L
8	4	0411-2033	WASHER .406 X 1.25 X .062 NYLON	SS 316/316L
7	4	0413-2005	WASHER, .406 X 1.25 X .062 NYLON	NYLON
6	4	0211-2011	DOG, LOCKING ARM 2222, AL	ALUMINUM, 535.2-F
5	1	0411-2004	PIN KNURLED .25 X 2.25IN SS 316	SS 316/316L
4	1	0011-2002	HUB, AL, 4 HOLE	ALUMINUM, 535.2-F
3	1	0613-2003	GASKET: 2222 (6.50 FT. OF 0631-0813)	NEOPRENE, 25 DURO
2	1	2463-3001	COVER: 2222-H, FINISHED CASTING	ALUMINUM A356.0-F
1	1	2464-1002	RING: 2222-H W/ BRACKETS	ALUMINUM A356.0-F



SPECIFICATIONS SUBJECT TO CHANGE WITHOUT NOTICE.
FREEMAN MARINE EQUIPMENT, INC.
 28304 HUNTER CREEK ROAD
 GOLD BEACH, OR 97444 U.S.A.
 PHONE: 541-247-7078 FAX: 541-247-2114
 www.freemarine.com

CLIENT: FREEMAN MARINE
 TITLE: HATCH: 2222-HK, AL COVER, AL RING

SIZE: 64747
 DRAWING NUMBER: 2463-0002-0101
 REV: -
 SHEET 2 OF 2

INITIAL RELEASE: []
 DATE: []
 DRAWN: []
 CHECKED: []
 APPROVED: []
 DATE: []
 SCALE: 3:4
 SHEET NO.: []
 SHEET 2 OF 2