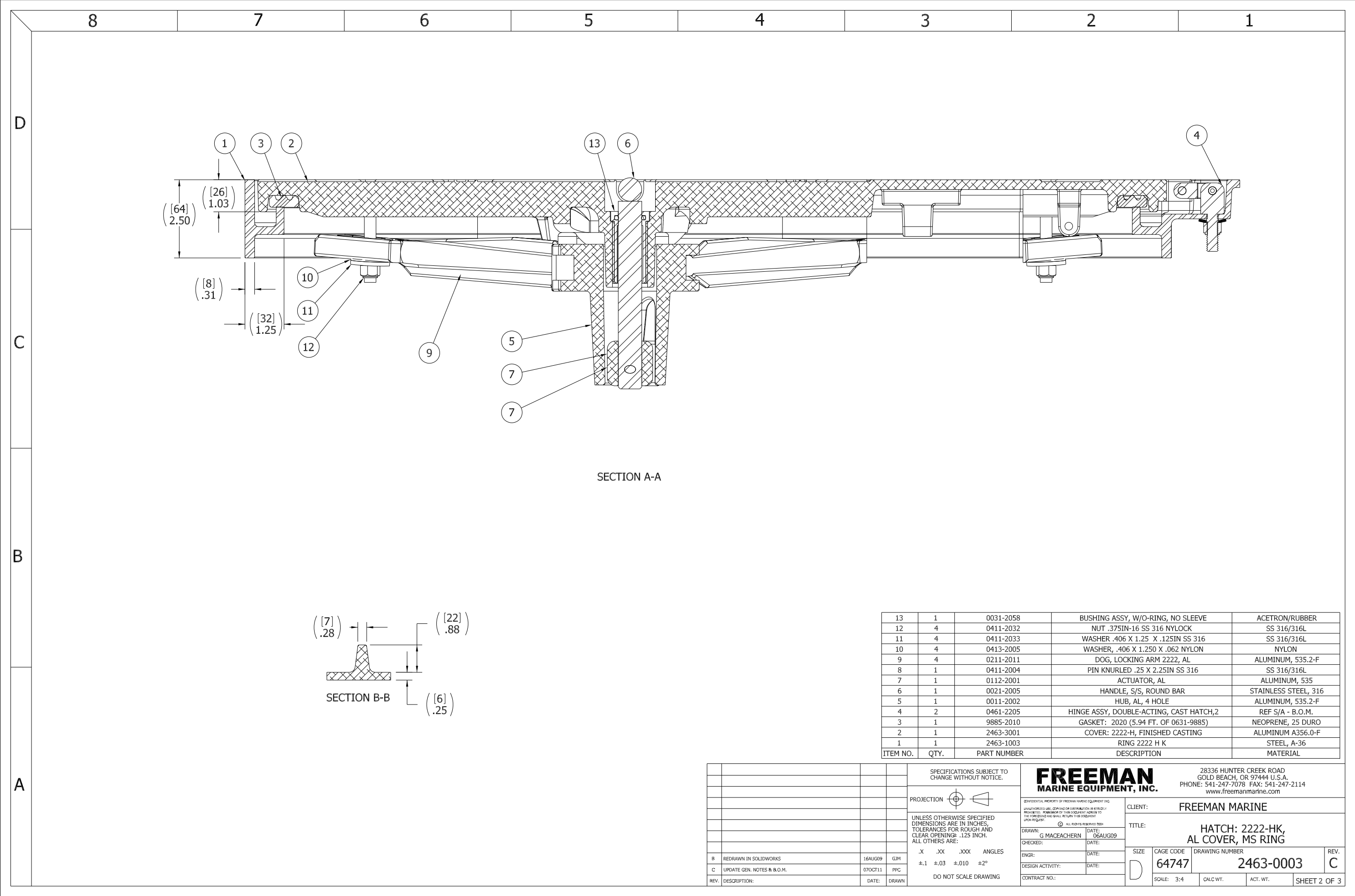


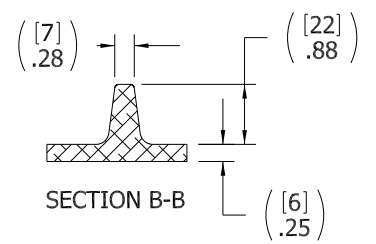
10. FOR SPECIFIC INFORMATION CONTACT SALES.
9. COMPLETE ASSEMBLY WEIGHT W/ DECK RING, 64.4LBS/ 64.4K.
8. DOGGING PRESSURE FULLY ADJUSTABLE.
7. HANDLE POSITION TOPSIDE INDICATES WHETHER DOGGING MECHANISM IS IN OPEN OR CLOSED POSITION.
6. ALUMINUM ALLOY MECHANISM SHOWN.
5. FLUSH, WATERTIGHT CONSTRUCTION.
4. INTEGRAL TOPSIDE "T" HANDLE STANDARD, OTHER TOPSIDE ACTUATION AVAILABLE.
3. MILD STEEL COAMING FOR WELD IN DECK APPLICATIONS.
2. QUICK-ACTING, MECHANISM ENGAGES OR DISENGAGES IN QUARTER-TURN OF CENTER SPINDLE.
1. 22" X 22" CLEAR OPENING, ALL DIMENSIONS SHOWN SUBJECT TO CASTING VARIATION AND ARE REFERENCE ONLY.

NOTES: UNLESS OTHERWISE SPECIFIED.

SPECIFICATIONS SUBJECT TO CHANGE WITHOUT NOTICE.		FREEMAN MARINE EQUIPMENT, INC.		28336 HUNTER CREEK ROAD GOLD BEACH, OR 97444 U.S.A. PHONE: 541-247-7078 FAX: 541-247-2114 www.freemanmarine.com	
PROJECTION		UNLESS OTHERWISE SPECIFIED DIMENSIONS ARE IN INCHES. TOLERANCES FOR ROUGH AND CLEAR OPENINGS: .125 INCH. ALL OTHERS ARE:		CLIENT: FREEMAN MARINE	
.X .XX .XXX ANGLES		±.1 ±.03 ±.010 ±2°		TITLE: HATCH: 2222-HK, AL COVER, MS RING	
DO NOT SCALE DRAWING		CONTRACT NO.:		DRAWING NUMBER: 2463-0003	
B	REDRAWN IN SOLIDWORKS	16AUG09	GJM	SIZE: D	CAGE CODE: 64747
C	UPDATE GEN. NOTES & B.O.M.	07OCT11	PPC	SCALE: 1:3	ACT. WT.
REV.	DESCRIPTION:	DATE:	DRAWN	SCALE: 1:3	CALC. WT.
			SHEET 1 OF 3		



SECTION A-A



ITEM NO.	QTY.	PART NUMBER	DESCRIPTION	MATERIAL
13	1	0031-2058	BUSHING ASSY, W/O-RING, NO SLEEVE	ACETRON/RUBBER
12	4	0411-2032	NUT .375IN-16 SS 316 NYLOCK	SS 316/316L
11	4	0411-2033	WASHER .406 X 1.25 X .125IN SS 316	SS 316/316L
10	4	0413-2005	WASHER, .406 X 1.250 X .062 NYLON	NYLON
9	4	0211-2011	DOG, LOCKING ARM 2222, AL	ALUMINUM, 535.2-F
8	1	0411-2004	PIN KNURLED .25 X 2.25IN SS 316	SS 316/316L
7	1	0112-2001	ACTUATOR, AL	ALUMINUM, 535
6	1	0021-2005	HANDLE, S/S, ROUND BAR	STAINLESS STEEL, 316
5	1	0011-2002	HUB, AL, 4 HOLE	ALUMINUM, 535.2-F
4	2	0461-2205	HINGE ASSY, DOUBLE-ACTING, CAST HATCH,2	REF S/A - B.O.M.
3	1	9885-2010	GASKET: 2020 (5.94 FT. OF 0631-9885)	NEOPRENE, 25 DURO
2	1	2463-3001	COVER: 2222-H, FINISHED CASTING	ALUMINUM A356.0-F
1	1	2463-1003	RING 2222 H K	STEEL, A-36

REV.	DESCRIPTION	DATE	DRAWN
B	REDRAWN IN SOLIDWORKS	16AUG09	GJM
C	UPDATE GEN. NOTES & B.O.M.	07OCT11	PPC

SPECIFICATIONS SUBJECT TO CHANGE WITHOUT NOTICE.

PROJECTION

UNLESS OTHERWISE SPECIFIED DIMENSIONS ARE IN INCHES. TOLERANCES FOR ROUGH AND CLEAR OPENINGS: .125 INCH. ALL OTHERS ARE:
 .X .XX .XXX ANGLES
 ±.1 ±.03 ±.010 ±2°

DO NOT SCALE DRAWING

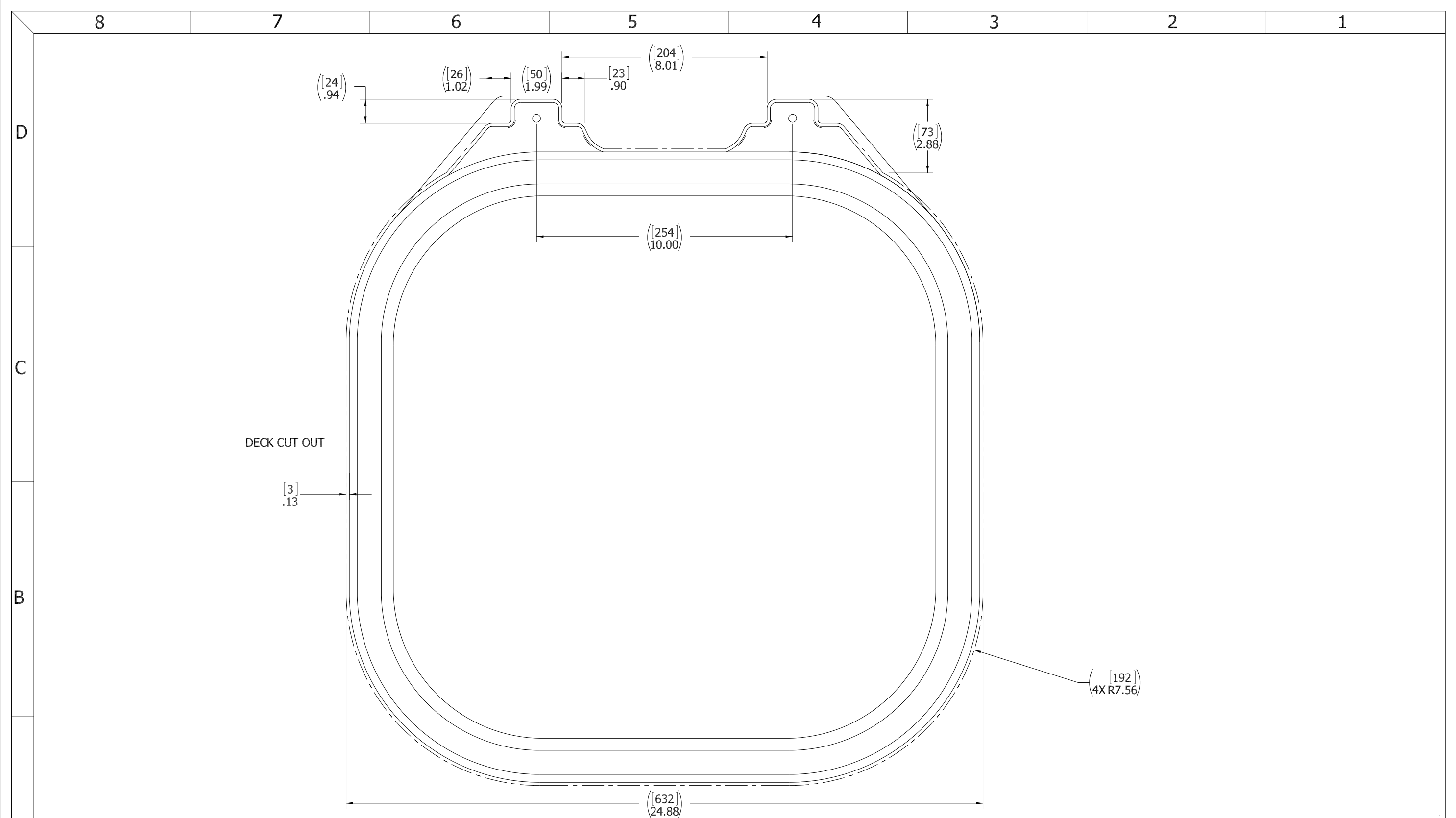
FREEMAN MARINE EQUIPMENT, INC.
 28336 HUNTER CREEK ROAD
 GOLD BEACH, OR 97444 U.S.A.
 PHONE: 541-247-7078 FAX: 541-247-2114
 www.freemanmarine.com

CLIENT: FREEMAN MARINE

TITLE: HATCH: 2222-HK, AL COVER, MS RING

SIZE: D CAGE CODE: 64747 DRAWING NUMBER: 2463-0003 REV. C

SCALE: 3:4 CALC. WT. ACT. WT. SHEET 2 OF 3



- 3. FINISH: 125 RMS MAX.
- 2. BREAK SHARP EDGES AND DEBURR.
- 1. MATERIAL: ALUMINUM W/ STEEL

NOTES: UNLESS OTHERWISE SPECIFIED.

CUSTOMER APPROVAL

Signature: _____

Date: _____

IMPORTANT! THIS DRAWING SUPERSEDES ALL OTHER DOCUMENTS. By signing this approval you accept and agree that the dimensions and details shown are correct and properly fit your application, regardless of any differences between this drawing and any contract specifications. Should you see any errors in the drawing, or have any questions, please contact your Freeman Marine sales engineer for clarification.

REV.	DESCRIPTION	DATE	DRAWN
B	REDRAWN IN SOLIDWORKS	16AUG09	GJM
C	UPDATE GEN. NOTES & B.O.M.	07OCT11	PPC

SPECIFICATIONS SUBJECT TO CHANGE WITHOUT NOTICE.

PROJECTION

UNLESS OTHERWISE SPECIFIED DIMENSIONS ARE IN INCHES. TOLERANCES FOR ROUGH AND CLEAR OPENINGS: .125 INCH. ALL OTHERS ARE:

.X .XX .XXX ANGLES
±.1 ±.03 ±.010 ±2°

DO NOT SCALE DRAWING

		28336 HUNTER CREEK ROAD GOLD BEACH, OR 97444 U.S.A. PHONE: 541-247-7078 FAX: 541-247-2114 www.freemanmarine.com	
		CLIENT:	FREEMAN MARINE
<small>CONFIDENTIAL PROPERTY OF FREEMAN MARINE EQUIPMENT, INC. UNLESS OTHERWISE SPECIFIED. ALL RIGHTS RESERVED. THIS DRAWING IS THE PROPERTY OF FREEMAN MARINE EQUIPMENT, INC. AND SHALL BE RETURNED UPON REQUEST.</small>		TITLE:	HATCH: 2222-HK, AL COVER, MS RING
DRAWN: G MACEACHERN CHECKED: _____ ENGR: _____ DESIGN ACTIVITY: _____ CONTRACT NO.: _____	DATE: 06AUG09 DATE: _____ DATE: _____	SIZE: D CAGE CODE: 64747 SCALE: 1:1.75	DRAWING NUMBER: 2463-0003 ACT. WT.: _____ SHEET 3 OF 3