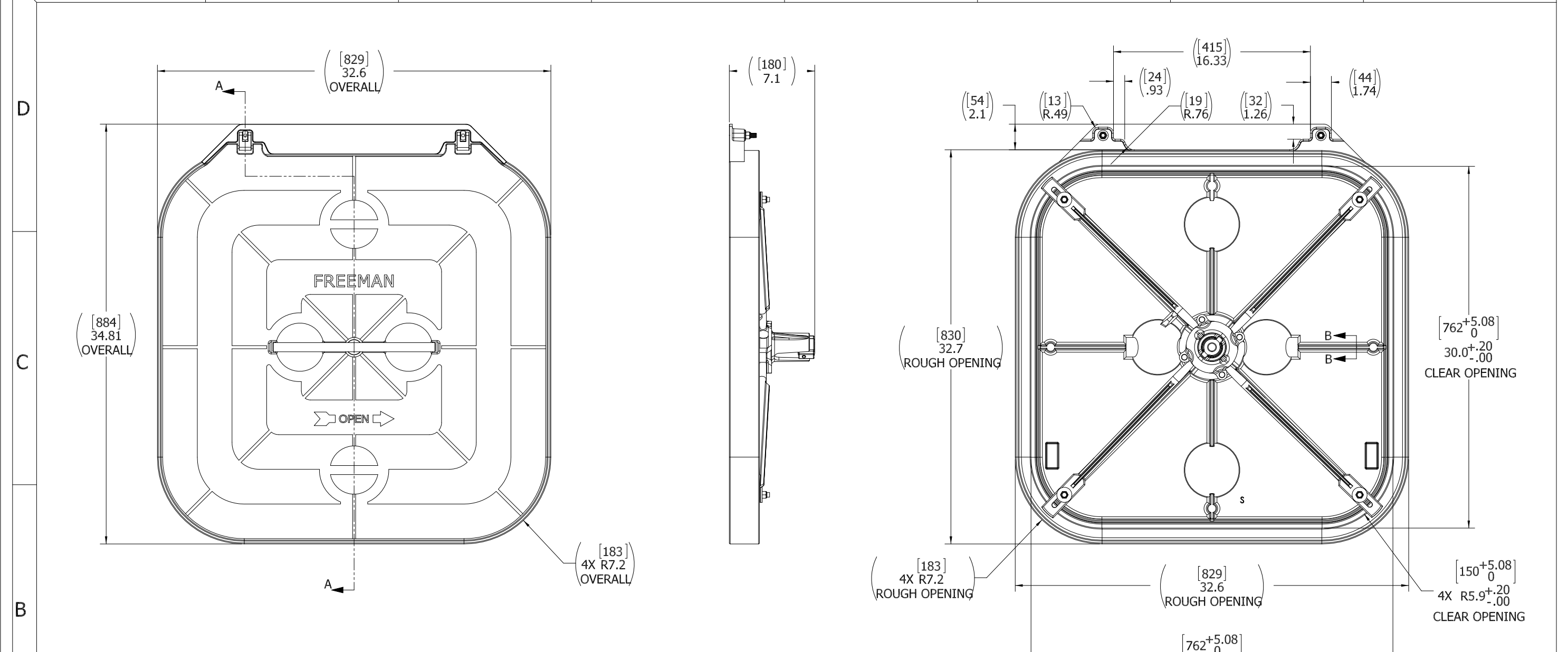


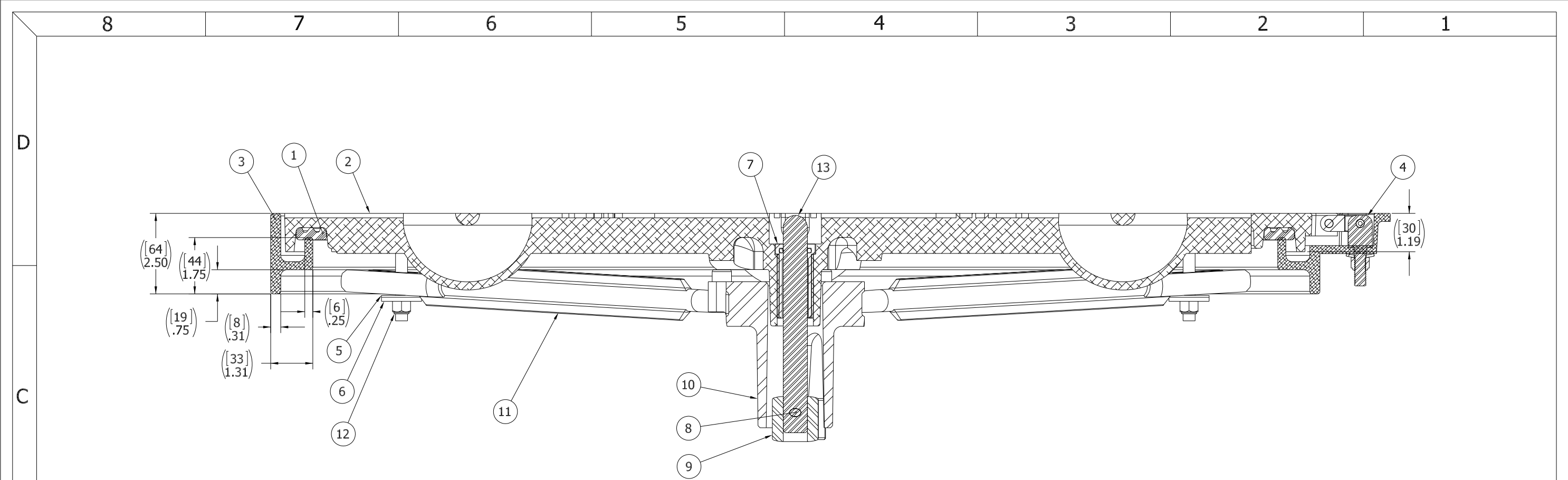
8 7 6 5 4 3 2 1



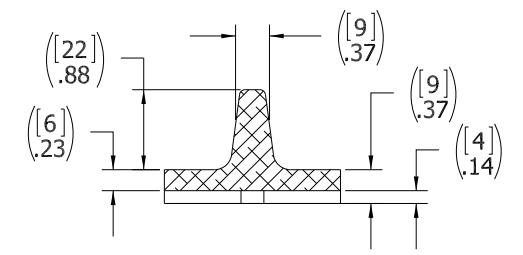
- 11. FINISH - COVER: BARE METAL, AS MANUFACTURED.
FINISH - COAMING: BARE METAL, AS MANUFACTURED.
- 10. FOR SPECIFIC INFORMATION CONTACT SALES.
- 9. COMPLETE ASSEMBLY WEIGHT W/ DECK RING, 109.8LBS/ 49.8K.
- 8. DOGGING PRESSURE FULLY ADJUSTABLE.
- 7. HANDLE POSITION TOPSIDE INDICATES WHETHER DOGGING MECHANISM IS IN OPEN OR CLOSED POSITION.
- 6. STAINLESS STEEL MECHANISM SHOWN.
- 5. FLUSH, WATERTIGHT CONSTRUCTION.
- 4. INTEGRAL TOPSIDE "T" HANDLE W/ACTUATOR STANDARD, OTHER TOPSIDE/BELOW-DECK ACTUATION AVAILABLE.
- 3. MILD STEEL COAMING FOR DECK WELDED INSTALLATIONS.
- 2. QUICK-ACTING, MECHANISM ENGAGES OR DISENGAGES IN QUARTER-TURN OF CENTER SPINDLE.
- 1. 30.0" X 30.0" CLEAR OPENING, ALL DIMENSIONS SHOWN SUBJECT TO CASTING VARIATION AND ARE REFERENCE ONLY.

NOTES: UNLESS OTHERWISE SPECIFIED.

SPECIFICATIONS SUBJECT TO CHANGE WITHOUT NOTICE.		FREEMAN MARINE EQUIPMENT, INC.		28336 HUNTER CREEK ROAD GOLD BEACH, OR 97444 U.S.A. PHONE: 541-247-7078 FAX: 541-247-2114 www.freemanmarine.com	
UNLESS OTHERWISE SPECIFIED DIMENSIONS ARE IN INCHES. TOLERANCES FOR ROUGH AND CLEAR OPENINGS: .125 INCH. ALL OTHERS ARE: .X .XX .XXX ANGLES ±.1 ±.03 ±.010 ±2°		CONFIDENTIAL PROPERTY OF FREEMAN MARINE EQUIPMENT, INC. UNLESS OTHERWISE SPECIFIED OR OTHERWISE INDICATED. PERMISSION TO REPRODUCE OR TRANSMIT THIS DOCUMENT IN ANY FORM OR BY ANY MEANS, ELECTRONIC OR MECHANICAL, INCLUDING PHOTOCOPYING, RECORDING, OR BY ANY INFORMATION STORAGE AND RETRIEVAL SYSTEM, IS PROHIBITED WITHOUT THE WRITTEN PERMISSION OF FREEMAN MARINE EQUIPMENT, INC.		CLIENT: FREEMAN MARINE EQUIPMENT, INC. TITLE: 3030-H K, AL CVR MS RING SS MECH	
PROJECTION		DRAWN: Z. CARPENTER DATE: 20MAY13 CHECKED: D. YOES DATE: 20MAY13 ENGR: DATE: DESIGN ACTIVITY: DATE: CONTRACT NO.:		SIZE: D CAGE CODE: 64747 DRAWING NUMBER: 2466-0007 SCALE: 1:4 CALC. WT. ACT. WT.	
A PRODUCTION RELEASE DATE: 20MAY13 DRAWN: ZIC		DO NOT SCALE DRAWING		REV. A SHEET 1 OF 3	



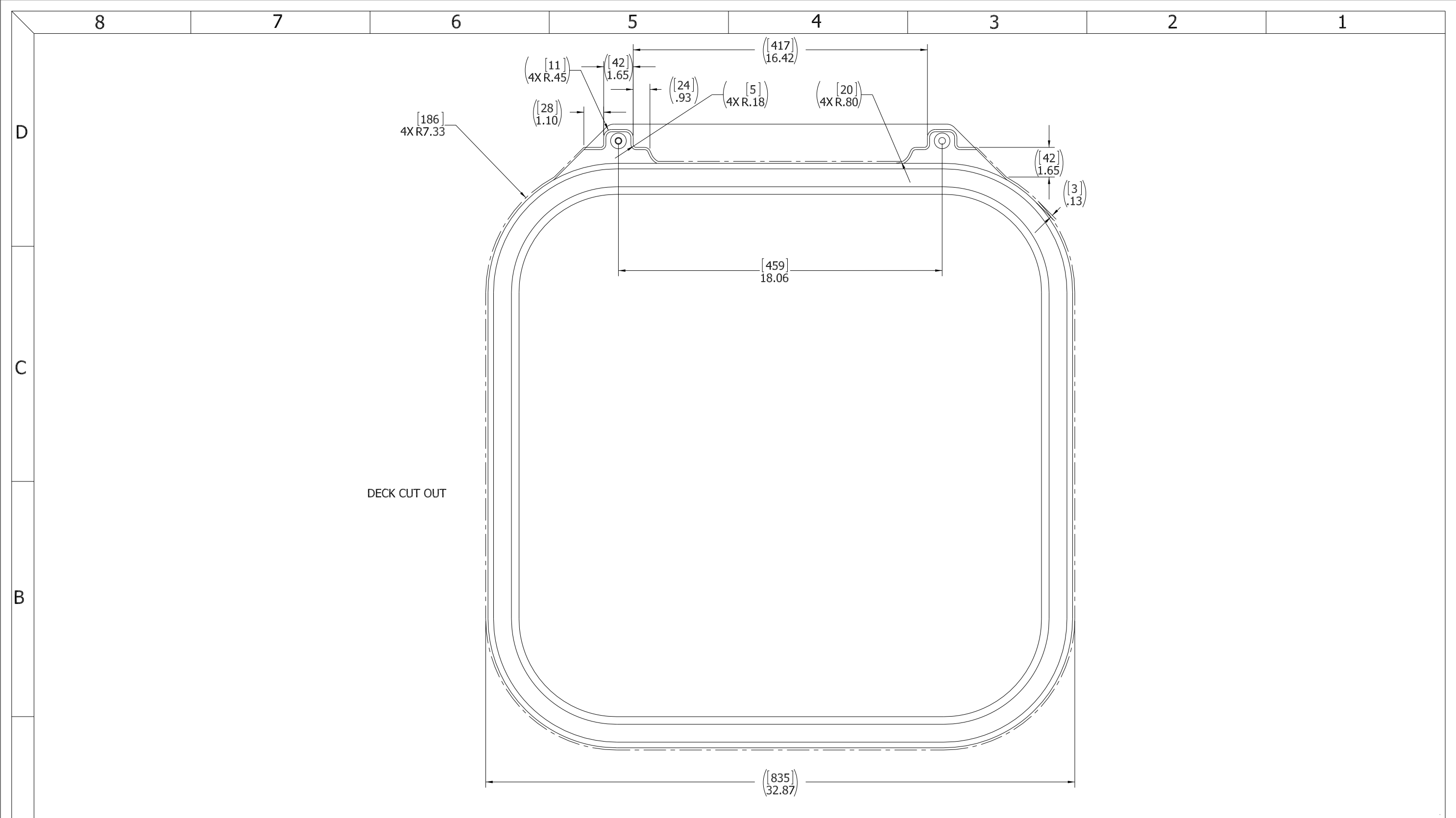
SECTION A-A



SECTION B-B
SCALE 1 : 1

ITEM NO.	QTY.	PART NUMBER	DESCRIPTION	MATERIAL
13	1	0021-2005	HANDLE, S/S, ROUND BAR	STAINLESS STEEL, 316
12	4	0411-2032	NUT .375IN-16 SS 316 NYLOCK	SS 316/316L
11	4	0212-2013	DOG, LOCKING ARM 3030, 316L S/S	STAINLESS STEEL, 316L
10	1	0212-2015	HUB, 4 HOLE, 316L S/S	CAST STAINLESS STEEL
9	1	0212-2017	ACTUATOR, 316LD S/S	STAINLESS STEEL, 316L
8	1	0411-2004	PIN KNURLED .25 X 2.25IN SS 316	SS 316/316L
7	1	0031-2058	BUSHING ASSY, W/O-RING, NO SLEEVE	ACETRON/RUBBER
6	4	0411-2033	WASHER .406 X 1.25 X .125IN SS 316	SS 316/316L
5	4	0413-2005	WASHER, .406 X 1.250 X .062 NYLON	NYLON
4	2	0461-2205	HINGE ASSY, DOUBLE-ACTING, CAST HATCH,2	REF S/A - B.O.M.
3	1	2466-1003	RING: 3030-H MILD STEEL	MILD STEEL
2	1	2466-3001	COVER: 3030-H ALUM, FINISHED CASTING	ALUMINUM, A356.2
1	1	9885-2001	GASKET, 3030 MS/SS, (9.46' OF 0631-9885)	NEOPRENE

SPECIFICATIONS SUBJECT TO CHANGE WITHOUT NOTICE.		FREEMAN MARINE EQUIPMENT, INC. 28336 HUNTER CREEK ROAD GOLD BEACH, OR 97444 U.S.A. PHONE: 541-247-7078 FAX: 541-247-2114 www.freemanmarine.com	
PROJECTION		CLIENT: FREEMAN MARINE EQUIPMENT, INC.	
UNLESS OTHERWISE SPECIFIED DIMENSIONS ARE IN INCHES. TOLERANCES FOR ROUGH AND CLEAR OPENINGS: .125 INCH. ALL OTHERS ARE: .X .XX .XXX ANGLES ±.1 ±.03 ±.010 ±2°		TITLE: 3030-H K, AL CVR MS RING SS MECH	
DO NOT SCALE DRAWING		SIZE: D CAGE CODE: 64747 DRAWING NUMBER: 2466-0007 REV. A	
A PRODUCTION RELEASE 20MAY13 ZIC		SCALE: 1:1.5 CALC. WT. ACT. WT. SHEET 2 OF 3	



DECK CUT OUT

- 3. FINISH: 125 RMS MAX.
 - 2. BREAK SHARP EDGES AND DEBURR.
 - 1. MATERIAL: REF. S/A - B.O.M.
- NOTES: UNLESS OTHERWISE SPECIFIED.

CUSTOMER APPROVAL

Signature: _____
 Date: _____

IMPORTANT! THIS DRAWING SUPERSEDES ALL OTHER DOCUMENTS. By signing this approval you accept and agree that the dimensions and details shown are correct and properly fit your application, regardless of any differences between this drawing and any contract specifications. Should you see any errors in the drawing, or have any questions, please contact your Freeman Marine sales engineer for clarification.

REV.	DESCRIPTION	DATE	DRAWN
A	PRODUCTION RELEASE	20MAY13	ZJC

SPECIFICATIONS SUBJECT TO CHANGE WITHOUT NOTICE.

PROJECTION

UNLESS OTHERWISE SPECIFIED DIMENSIONS ARE IN INCHES. TOLERANCES FOR ROUGH AND CLEAR OPENINGS: .125 INCH. ALL OTHERS ARE:
 .X .XX .XXX ANGLES
 ±.1 ±.03 ±.010 ±2°

DO NOT SCALE DRAWING

		28336 HUNTER CREEK ROAD GOLD BEACH, OR 97444 U.S.A. PHONE: 541-247-7078 FAX: 541-247-2114 www.freemanmarine.com	
		CLIENT: FREEMAN MARINE EQUIPMENT, INC.	
CONFIDENTIAL PROPERTY OF FREEMAN MARINE EQUIPMENT, INC. UNLESS OTHERWISE SPECIFIED. ALL RIGHTS RESERVED. THIS DRAWING IS THE PROPERTY OF FREEMAN MARINE EQUIPMENT, INC. AND MUST BE RETURNED UPON REQUEST.		TITLE: 3030-H K, AL CVR MS RING SS MECH	
DRAWN: Z. CARPENTER CHECKED: D. YOES ENGR: _____ DESIGN ACTIVITY: _____ CONTRACT NO.: _____	DATE: 20MAY13 DATE: 20MAY13 DATE: _____ DATE: _____	SIZE: D CAGE CODE: 64747 SCALE: 1:2.5	DRAWING NUMBER: 2466-0007 ACT. WT.: _____ SHEET 3 OF 3