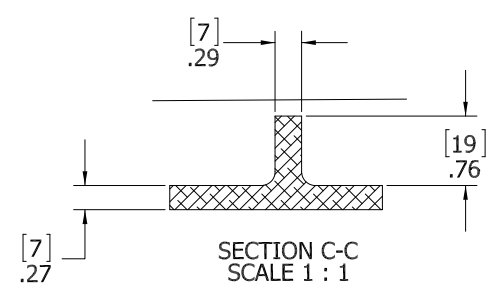
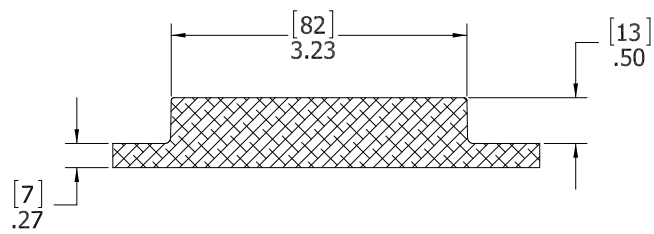


10. FOR SPECIFIC INFORMATION CONTACT SALES.
9. COMPLETE ASSEMBLY WEIGHT W/ DECK RING, 102.3LBS/ 46.4Kg.
8. DOGGING PRESSURE FULLY ADJUSTABLE.
7. HANDLE POSITION TOPSIDE INDICATES WHETHER DOGGING MECHANISM IS IN OPEN OR CLOSED POSITION.
6. ALUMINUM ALLOY MECHANISM SHOWN.
5. FLUSH, WATERTIGHT CONSTRUCTION.
4. INTEGRAL TOPSIDE "T" HANDLE STANDARD, OTHER TOPSIDE ACTUATION AVAILABLE.
3. CAST ALUMINUM ALLOY FLANGE, FLANGE CAN BE DRILLED FOR BOLTED INSTALLATIONS OR WELDED TO ALUMINUM.
2. QUICK-ACTING, MECHANISM ENGAGES OR DISENGAGES IN QUARTER-TURN OF CENTER SPINDLE.
1. 36.4 X 36.7 CLEAR OPENING, ALL DIMENSIONS SHOWN SUBJECT TO CASTING VARIATION AND ARE REFERENCE ONLY.

NOTES: UNLESS OTHERWISE SPECIFIED.



SECTION B-B
SCALE 1:1

SPECIFICATIONS SUBJECT TO CHANGE WITHOUT NOTICE.

PROJECTION

UNLESS OTHERWISE SPECIFIED DIMENSIONS ARE IN INCHES. TOLERANCES FOR ROUGH AND CLEAR OPENINGS: .125 INCH. ALL OTHERS ARE:

.X	.XX	.XXX	ANGLES
±.1	±.03	±.010	±2°

DO NOT SCALE DRAWING

FREEMAN MARINE EQUIPMENT, INC.

28336 HUNTER CREEK ROAD
GOLD BEACH, OR 97444 U.S.A.
PHONE: 541-247-7078 FAX: 541-247-2114
www.freemanmarine.com

CLIENT: FREEMAN MARINE EQUIPMENT

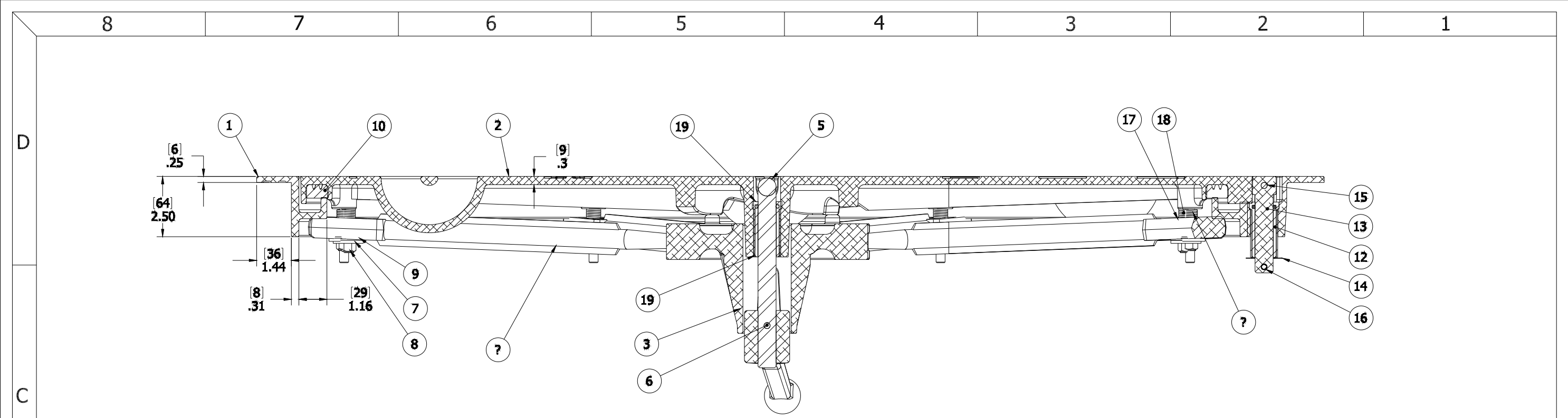
TITLE: HATCH: 3636-H K
AL COVER, AL RING
W/ INTEGRAL TOPSIDE HANDLE

SIZE	CAGE CODE	DRAWING NUMBER	REV.
D	64747	2468-0002-2011	A

SCALE: 1:4 CALC. WT. ACT. WT. SHEET 1 OF 2

INITIAL RELEASE	25 MAR 09	SAS
UPDATE GEN. NOTES & B.O.M.	02NOV11	PPC
REV. DESCRIPTION:	DATE:	DRAWN

A



SECTION A-A
SCALE 1:2

ITEM NO.	QTY.	PART NUMBER	DESCRIPTION	MATERIAL
19	1	0031-2058	BUSHING ASSY, W/O-RING, NO SLEEVE	ACETRON/RUBBER
18	12	0431-2039	SPRING, COMPRESSION	SS 302 ASTM-A313 or AMS-5688
17	12	0411-2101	WASHER FLAT .375IN SS 316	SS 316/316L
16	2	0411-2966	PIN, SPIROL MDP: 1/4 X 1-1/4, S/S	316 STAINLESS STEEL
15	2	0411-2263	PIN, KNURLED, 1/4 X 5-1/8	316 S/S
14	2	0411-2021	WASHER, SHIM, .75IN x .028	SS 18-8
13	2	0462-2052	PIN, HINGE	316 STAINLESS STEEL
12	2	0031-2001	BUSHING ASSY, STD HATCH, W/SLEEVE	VARIOUS
11	1	0112-2023	ESCAPE HANDLE, 8 HOLE HUB, AL	ALUMINUM, 535.2-F
10	1	9813-2006	GASKET: 3636ALR(11.56FT. OF 0631-9813)	NEOPRENE
9	12	0413-2005	WASHER, .406 X 1.250 X .062 NYLON	NYLON
8	12	0411-2032	NUT .375IN-16 SS 316 NYLOCK	SS 316/316L
7	12	0411-2033	WASHER .406 X 1.25 X .125IN SS 316	SS 316/316L
6	1	0411-2005	PIN KNURLED .25 X 2.75IN SS 316	SS 316/316L
5	1	0021-2018	HANDLE, S/S, ROUND BAR, 3636 HATCH	STAINLESS STEEL, 316
4	8	0211-2026	DOG, LOCKING ARM, 3636, AL	ALUMINUM, 535.2-F
3	1	0011-2007	HUB, AL, 8 HOLE	ALUMINUM, 535.2-F
2	1	2468-3001	COVER, 3636-H K ALUM, FINISHED CASTING	ALUMINUM
1	1	2468-1002	RING, 3636, ALUM	ALUMINUM

REV.	DESCRIPTION	DATE	DRAWN
-	INITIAL RELEASE	25 MAR 09	SHS
A	UPDATE GEN. NOTES & DIM.	02 NOV 11	PKC

SPECIFICATIONS SUBJECT TO CHANGE WITHOUT NOTICE.

PROJECTION

UNLESS OTHERWISE SPECIFIED DIMENSIONS ARE IN INCHES. TOLERANCES FOR ROUGH AND CLEAR OPENINGS: .125 INCH. ALL OTHERS ARE:
 .X .XX .XXX ANGLES
 ±.1 ±.03 ±.010 ±2°

DO NOT SCALE DRAWING

FREEMAN MARINE EQUIPMENT, INC.
 28336 HUNTER CREEK ROAD
 GOLD BEACH, OR 97444 U.S.A.
 PHONE: 541-247-7078 FAX: 541-247-2114
 www.freemanmarine.com

CLIENT: FREEMAN MARINE EQUIPMENT

TITLE: HATCH: 3636-H K
 AL COVER, AL RING
 W/ INTEGRAL TOPSIDE HANDLE

SIZE: D CAGE CODE: 64747 DRAWING NUMBER: 2468-0002-2011 REV. A

SCALE: 1:2 SHEET 2 OF 2