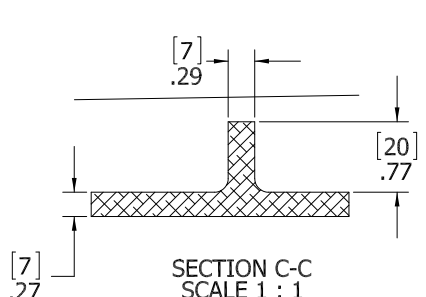
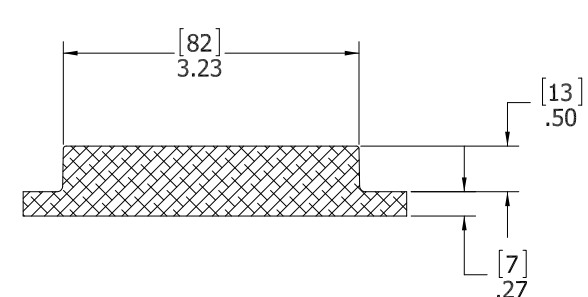
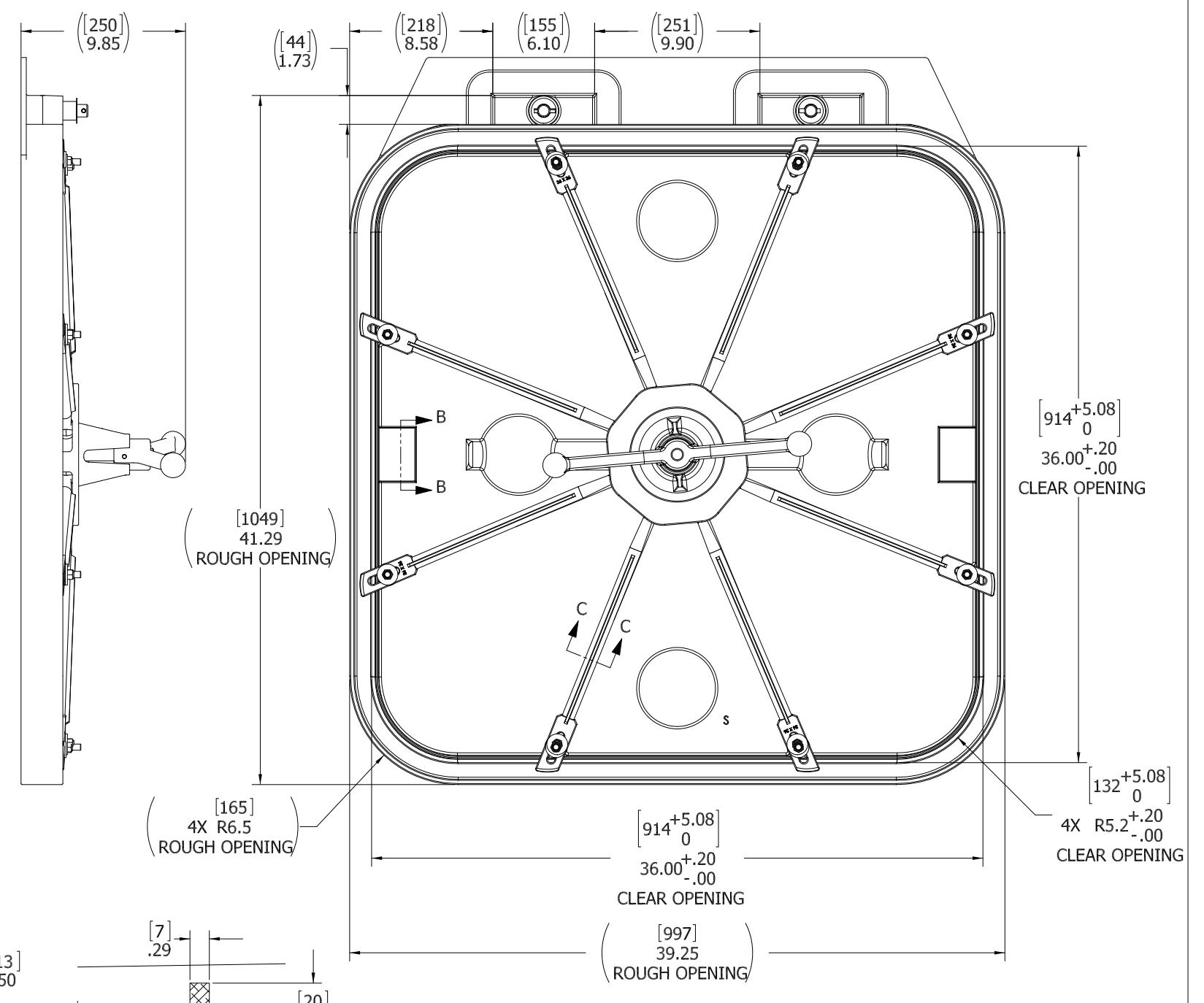
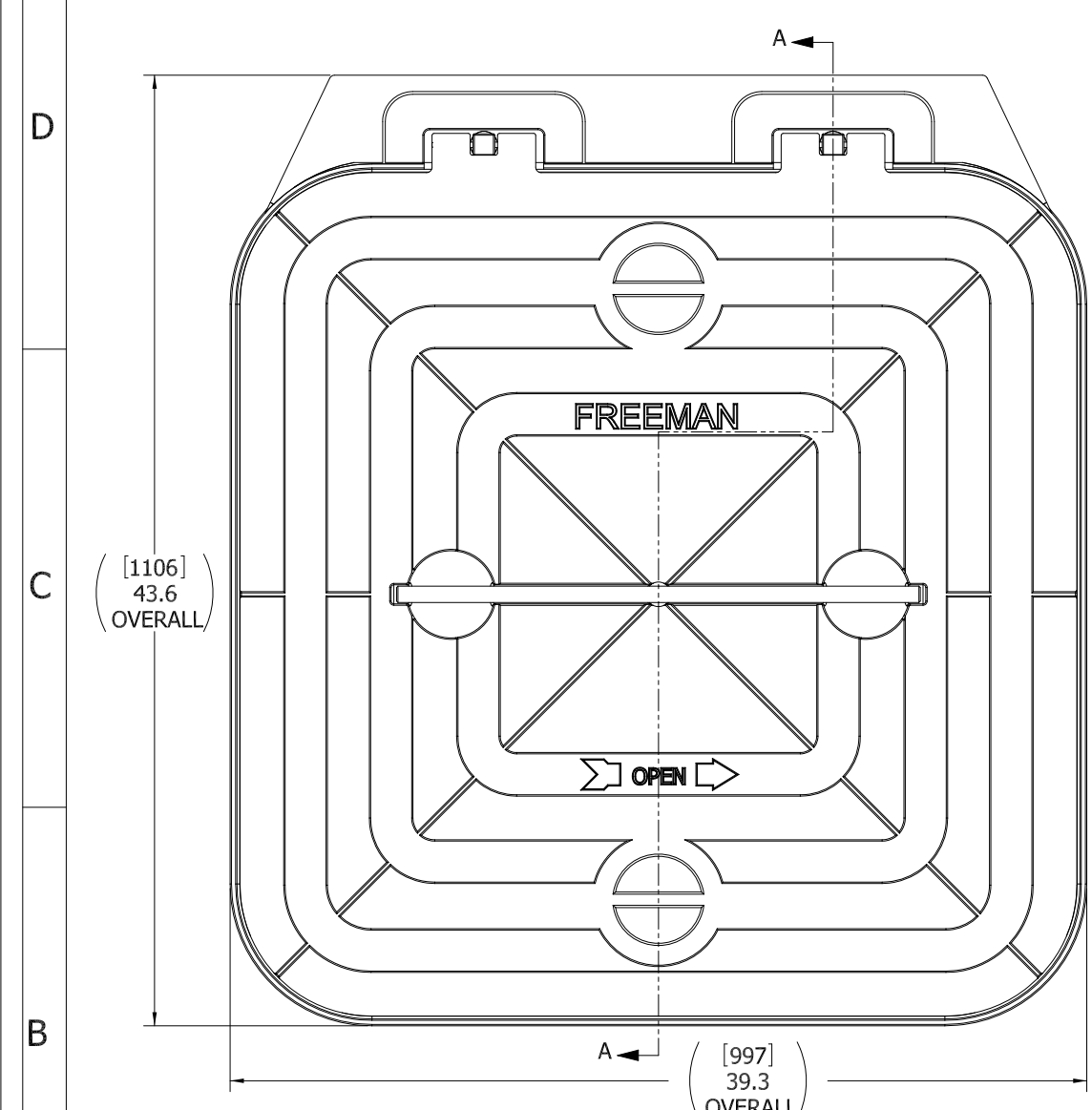


8 7 6 5 4 3 2 1



- 10. FOR SPECIFIC INFORMATION CONTACT SALES.
- 9. COMPLETE ASSEMBLY WEIGHT W/ DECK RING, 141.2LBS/ 64.0Kg.
- 8. DOGGING PRESSURE FULLY ADJUSTABLE.
- 7. HANDLE POSITION TOPSIDE INDICATES WHETHER DOGGING MECHANISM IS IN OPEN OR CLOSED POSITION.
- 6. ALUMINUM ALLOY MECHANISM SHOWN.
- 5. FLUSH, WATERTIGHT CONSTRUCTION.
- 4. INTEGRAL TOPSIDE "T" HANDLE STANDARD, OTHER TOPSIDE ACTUATION AVAILABLE.
- 3. MILD STEEL FLANGE, FLANGE CAN BE WELDED FOR INSTALLATIONS.
- 2. QUICK-ACTING, MECHANISM ENGAGES OR DISENGAGES IN QUARTER-TURN OF CENTER SPINDLE.
- 1. 36.6 X 36.9 CLEAR OPENING, ALL DIMENSIONS SHOWN SUBJECT TO CASTING VARIATION AND ARE REFERENCE ONLY.

NOTES: UNLESS OTHERWISE SPECIFIED.

REV.	DESCRIPTION	DATE	DRAWN
-	INITIAL RELEASE	31DEC08	TLK
A	UPDATE GEN. NOTES & B.O.M.	02NOV11	PPC

SPECIFICATIONS SUBJECT TO CHANGE WITHOUT NOTICE.

PROJECTION

UNLESS OTHERWISE SPECIFIED DIMENSIONS ARE IN INCHES. TOLERANCES FOR ROUGH AND CLEAR OPENINGS: .125 INCH. ALL OTHERS ARE:  
 .X .XX .XXX ANGLES  
 ±.1 ±.03 ±.010 ±2°

DO NOT SCALE DRAWING

**FREEMAN MARINE EQUIPMENT, INC.**

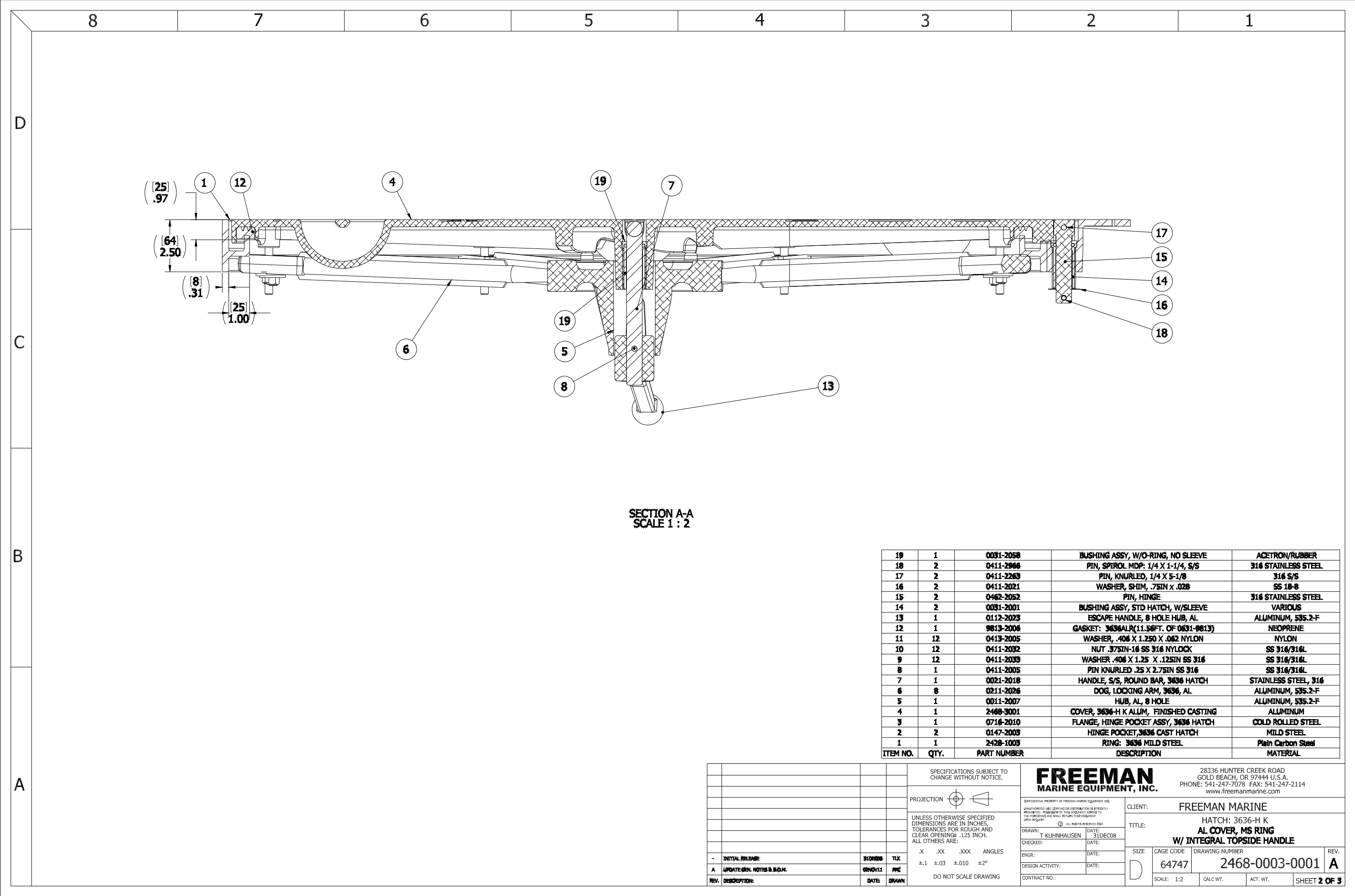
28336 HUNTER CREEK ROAD  
GOLD BEACH, OR 97444 U.S.A.  
PHONE: 541-247-7078 FAX: 541-247-2114  
www.freemanmarine.com

CLIENT: **FREEMAN MARINE**

TITLE: **HATCH: 3636-H K  
AL COVER, MS RING  
W/ INTEGRAL TOPSIDE HANDLE**

SIZE: **D** CAGE CODE: **64747** DRAWING NUMBER: **2468-0003-0001** REV. **A**

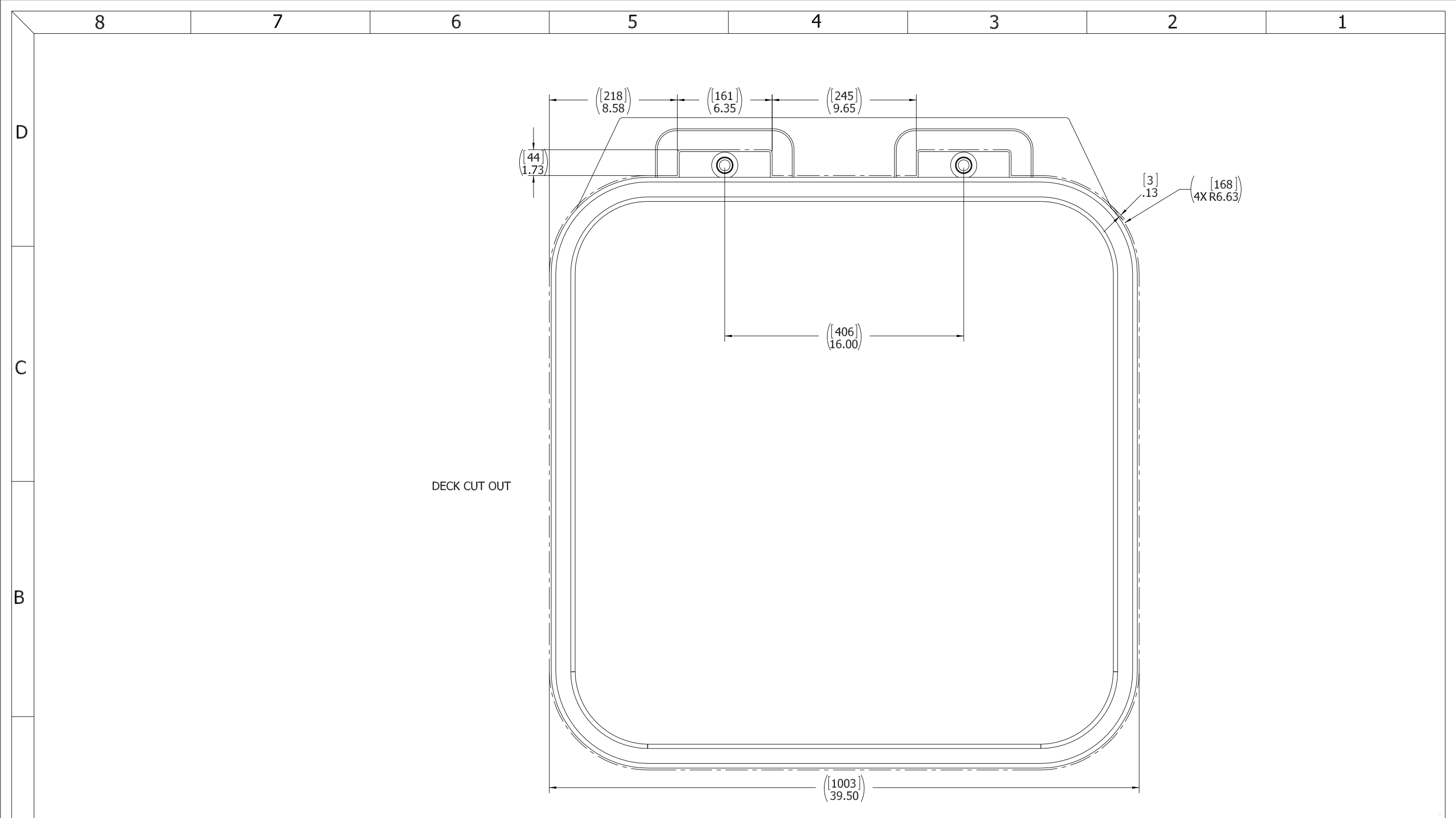
SCALE: 1:4 CALC. WT. ACT. WT. SHEET 1 OF 3



SECTION A-A  
SCALE 1 : 2

ITEM NO.	QTY.	PART NUMBER	DESCRIPTION	MATERIAL
19	1	0031-2058	BUSHING ASSY, W/O-RING, NO SLEEVE	ACETRON/RUBBER
18	2	0411-2966	PIN, SPIROL MDP: 1/4 X 1-1/4, S/S	316 STAINLESS STEEL
17	2	0411-2263	PIN, KNURLED, 1/4 X 5-1/8	316 S/S
16	2	0411-2021	WASHER, SHIM, .75IN X .028	SS 18-8
15	2	0462-2052	PIN, HINGE	316 STAINLESS STEEL
14	2	0031-2001	BUSHING ASSY, STD HATCH, W/SLEEVE	VARIOUS
13	1	0112-2023	ESCAPE HANDLE, Ø HOLE HUB, AL	ALUMINUM, 535.2-F
12	1	9813-2006	GASKET: 3636ALR(11.56FT. OF 0631-9813)	NEOPRENE
11	12	0413-2005	WASHER, .406 X 1.250 X .062 NYLON	NYLON
10	12	0411-2032	NUT .375IN-16 SS 316 NYLOCK	SS 316/316L
9	12	0411-2033	WASHER .406 X 1.25 X .125IN SS 316	SS 316/316L
8	1	0411-2005	PIN KNURLED .25 X 2.75IN SS 316	SS 316/316L
7	1	0021-2018	HANDLE, S/S, ROUND BAR, 3636 HATCH	STAINLESS STEEL, 316
6	8	0211-2026	DOG, LOCKING ARM, 3636, AL	ALUMINUM, 535.2-F
5	1	0011-2007	HUB, AL, Ø HOLE	ALUMINUM, 535.2-F
4	1	2468-3001	COVER, 3636-H K ALUM, FINISHED CASTING	ALUMINUM
3	1	0716-2010	FLANGE, HINGE POCKET ASSY, 3636 HATCH	COLD ROLLED STEEL
2	2	0147-2003	HINGE POCKET, 3636 CAST HATCH	MILD STEEL
1	1	2428-1003	RING: 3636 MILD STEEL	Plain Carbon Steel

SPECIFICATIONS SUBJECT TO CHANGE WITHOUT NOTICE.		<b>FREEMAN MARINE EQUIPMENT, INC.</b> 28336 HUNTER CREEK ROAD GOLD BEACH, OR 97444 U.S.A. PHONE: 541-247-7078 FAX: 541-247-2114 www.freemanmarine.com	
PROJECTION		CLIENT: FREEMAN MARINE	
UNLESS OTHERWISE SPECIFIED DIMENSIONS ARE IN INCHES. TOLERANCES FOR ROUGH AND CLEAR OPENINGS: .125 INCH. ALL OTHERS ARE: .X .XX .XXX ANGLES ±.1 ±.03 ±.010 ±2°		TITLE: HATCH: 3636-H K AL COVER, MS RING W/ INTEGRAL TOPSIDE HANDLE	
DO NOT SCALE DRAWING		SIZE: D CAGE CODE: 64747 DRAWING NUMBER: 2468-0003-0001 REV. A	
- INITIAL RELEASE: 31DEC08 TLK		SCALE: 1:2 CALC. WT. ACT. WT. SHEET 2 OF 3	
A UPDATE GEN. NOTES & B.O.M.: 02NOV11 PNC			
REV. DESCRIPTION: DATE: DRAWN:			



- 3. FINISH: 125 RMS MAX.
- 2. BREAK SHARP EDGES AND DEBURR.
- 1. MATERIAL: REF. S/A - B.O.M.

NOTES: UNLESS OTHERWISE SPECIFIED.

CUSTOMER APPROVAL

Signature: \_\_\_\_\_  
 Date: \_\_\_\_\_

IMPORTANT! THIS DRAWING SUPERSEDES ALL OTHER DOCUMENTS. By signing this approval you accept and agree that the dimensions and details shown are correct and properly fit your application, regardless of any differences between this drawing and any contract specifications. Should you see any errors in the drawing, or have any questions, please contact your Freeman Marine sales engineer for clarification.

SPECIFICATIONS SUBJECT TO CHANGE WITHOUT NOTICE.		
PROJECTION		
UNLESS OTHERWISE SPECIFIED DIMENSIONS ARE IN INCHES. TOLERANCES FOR ROUGH AND CLEAR OPENINGS: .125 INCH. ALL OTHERS ARE:		
.X	.XX	.XXX ANGLES
±.1	±.03	±.010 ±2°
DO NOT SCALE DRAWING		
REV.	DESCRIPTION:	DATE: DRAWN
-	INITIAL RELEASE	31DEC08 TLK
A	UPDATE GEN. NOTES & B.O.M.	02NOV11 PPC

**FREEMAN MARINE EQUIPMENT, INC.**

CONFIDENTIAL PROPERTY OF FREEMAN MARINE EQUIPMENT, INC. UNLESS OTHERWISE SPECIFIED, ALL DIMENSIONS ARE THE PROPERTY OF FREEMAN MARINE EQUIPMENT, INC. AND MUST BE RETURNED TO FREEMAN MARINE EQUIPMENT, INC. ALL RIGHTS RESERVED 2012, FREEMAN MARINE EQUIPMENT, INC.

28336 HUNTER CREEK ROAD  
 GOLD BEACH, OR 97444 U.S.A.  
 PHONE: 541-247-7078 FAX: 541-247-2114  
 www.freemanmarine.com

CLIENT: **FREEMAN MARINE**

TITLE: **HATCH: 3636-H K  
 AL COVER, MS RING**

SIZE: **D** CAGE CODE: **64747** DRAWING NUMBER: **2468-0003-0001** REV. **A**

SCALE: 1:3 CALC. WT. ACT. WT. SHEET 3 OF 3