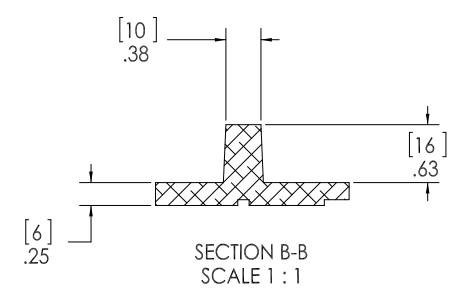


- 10. FOR SPECIFIC INFORMATION CONTACT SALES.
- 9. COMPLETE ASSEMBLY WEIGHT W/ DECK RING, 31.2LBS/ 14.1K.
- 8. DOGGING PRESSURE FULLY ADJUSTABLE.
- 7. HANDLE POSITION TOPSIDE INDICATES WHETHER DOGGING MECHANISM IS IN OPEN OR CLOSED POSITION.
- 6. ALUMINUM ALLOY MECHANISM SHOWN.
- 5. FLUSH, WATERTIGHT CONSTRUCTION.
- 4. INTEGRAL TOPSIDE "T" HANDLE STANDARD, OTHER TOPSIDE ACTUATION AVAILABLE.
- 3. STEEL FLANGE, FLANGE WELDED FOR INSTALLATION.
- 2. QUICK-ACTING, MECHANISM ENGAGES OR DISENGAGES IN QUARTER-TURN OF CENTER SPINDLE.
- 1. 12.5" x 18.3" CLEAR OPENING, ALL DIMENSIONS SHOWN SUBJECT TO CASTING VARIATION AND ARE REFERENCE ONLY.

NOTES: UNLESS OTHERWISE SPECIFIED.



CUSTOMER APPROVAL

Signature: _____
Date: _____

IMPORTANT! THIS DRAWING SUPERSEDES ALL OTHER DOCUMENTS. By signing this approval you accept and agree that the dimensions and details shown are correct and properly fit your application, regardless of any differences between this drawing and any contract specifications. Should you see any errors in the drawing, or have any questions, please contact your Freeman Marine sales engineer for clarification.

SPECIFICATIONS SUBJECT TO CHANGE WITHOUT NOTICE.		
PROJECTION		
UNLESS OTHERWISE SPECIFIED DIMENSIONS ARE IN INCHES. TOLERANCES FOR ROUGH AND CLEAR OPENINGS: .125 INCH. ALL OTHERS ARE:		
.X	.XX	.XXX ANGLES
±.1	±.03	±.010 ±2°
DO NOT SCALE DRAWING		
REV.	DESCRIPTION:	DATE: DRAWN
-	INITIAL RELEASE	04NOV11 PPC

FREEMAN MARINE EQUIPMENT, INC.

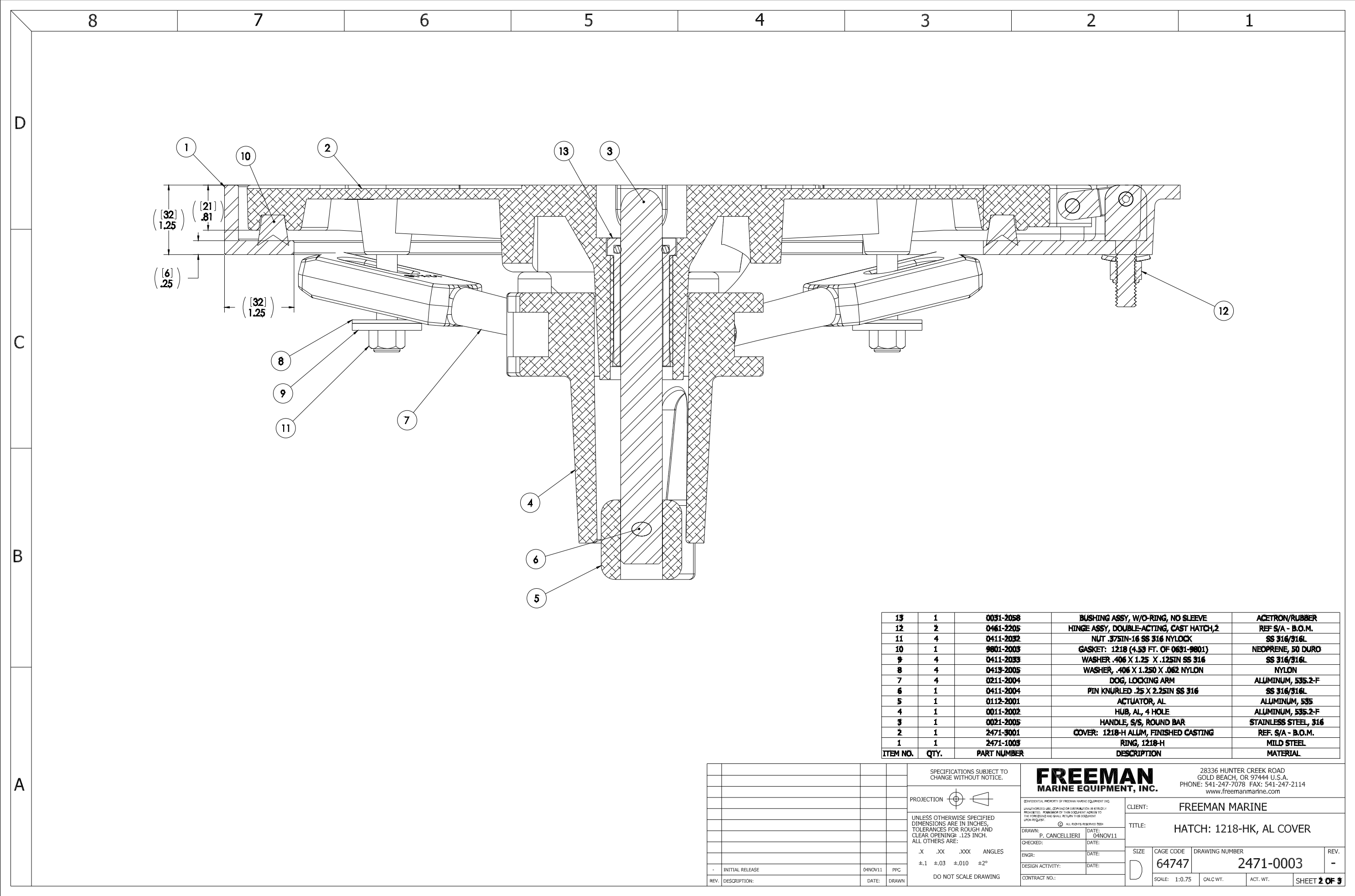
28336 HUNTER CREEK ROAD
GOLD BEACH, OR 97444 U.S.A.
PHONE: 541-247-7078 FAX: 541-247-2114
www.freemanmarine.com

CLIENT: **FREEMAN MARINE**

TITLE: **HATCH: 1218-HK, AL COVER**

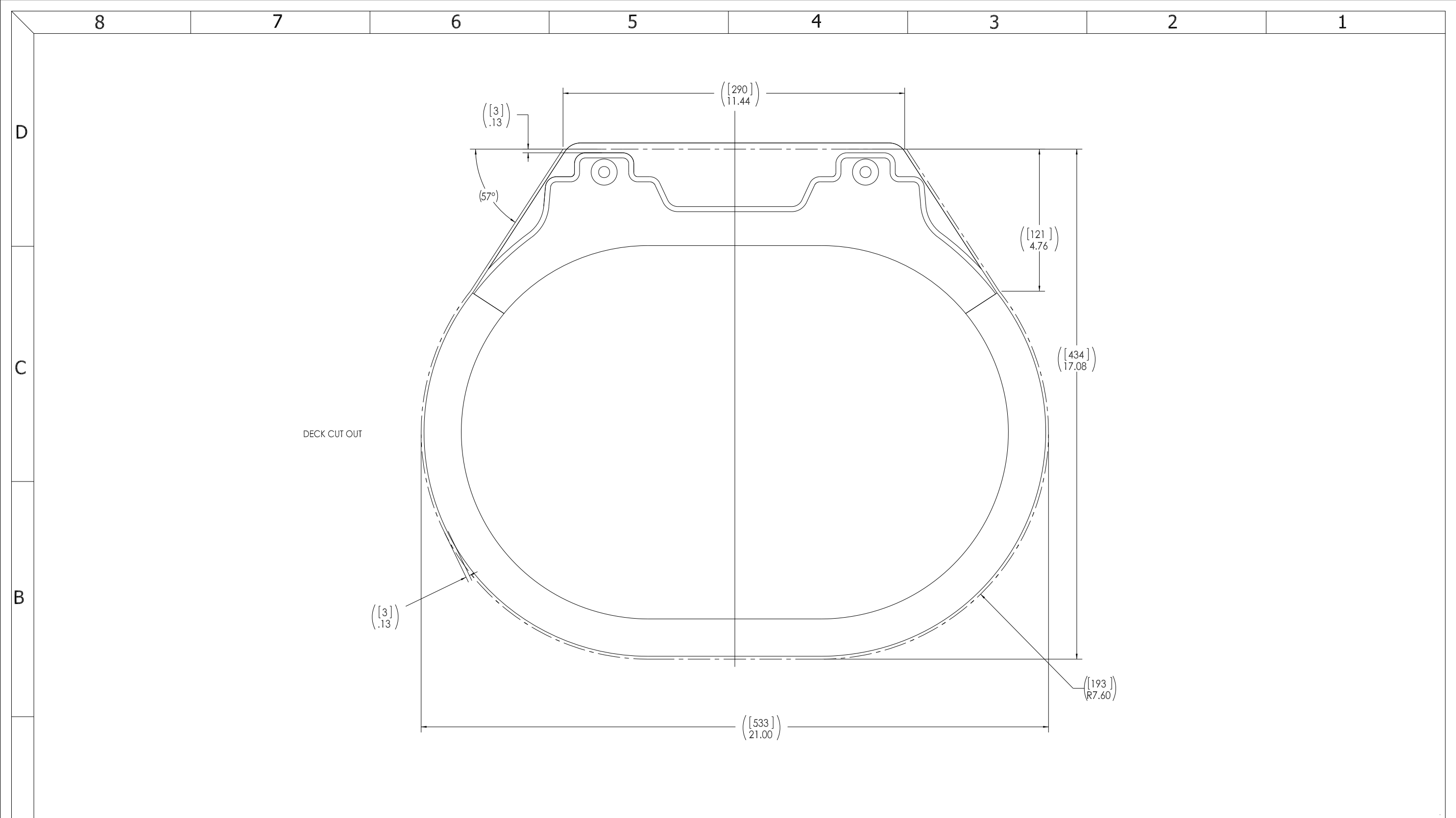
SIZE: **D** CAGE CODE: **64747** DRAWING NUMBER: **2471-0003** REV: **-**

SCALE: 1:2 CALC. WT. ACT. WT. SHEET 1 OF 3



ITEM NO.	QTY.	PART NUMBER	DESCRIPTION	MATERIAL
13	1	0031-2058	BUSHING ASSY, W/O-RING, NO SLEEVE	ACETRON/RUBBER
12	2	0461-2205	HINGE ASSY, DOUBLE-ACTING, CAST HATCH, 2	REF S/A - B.O.M.
11	4	0411-2032	NUT .375IN-16 SS 316 NYLOCK	SS 316/316L
10	1	9801-2003	GASKET: 1218 (4.53 FT. OF 0631-9801)	NEOPRENE, 50 DURO
9	4	0411-2033	WASHER .406 X 1.25 X .125IN SS 316	SS 316/316L
8	4	0413-2005	WASHER .406 X 1.250 X .062 NYLON	NYLON
7	4	0211-2004	DOG, LOCKING ARM	ALUMINUM, 535.2-F
6	1	0411-2004	PIN KNURLED .25 X 2.25IN SS 316	SS 316/316L
5	1	0112-2001	ACTUATOR, AL	ALUMINUM, 535
4	1	0011-2002	HUB, AL, 4 HOLE	ALUMINUM, 535.2-F
3	1	0021-2005	HANDLE, S/S, ROUND BAR	STAINLESS STEEL, 316
2	1	2471-3001	COVER: 1218-H ALUM, FINISHED CASTING	REF. S/A - B.O.M.
1	1	2471-1003	RING, 1218-H	MILD STEEL

SPECIFICATIONS SUBJECT TO CHANGE WITHOUT NOTICE.		FREEMAN MARINE EQUIPMENT, INC. 28336 HUNTER CREEK ROAD GOLD BEACH, OR 97444 U.S.A. PHONE: 541-247-7078 FAX: 541-247-2114 www.freemanmarine.com	
PROJECTION		CLIENT: FREEMAN MARINE	
UNLESS OTHERWISE SPECIFIED DIMENSIONS ARE IN INCHES. TOLERANCES FOR ROUGH AND CLEAR OPENINGS: .125 INCH. ALL OTHERS ARE: .X .XX .XXX ANGLES ±.1 ±.03 ±.010 ±2°		TITLE: HATCH: 1218-HK, AL COVER	
INITIAL RELEASE: 04NOV11 PPC REV. DESCRIPTION: DATE: DRAWN		CONTRACT NO.: SCALE: 1:0.75 CALC. WT. ACT. WT. SHEET 2 OF 3	



- 3. FINISH: 125 RMS MAX.
 - 2. BREAK SHARP EDGES AND DEBURR.
 - 1. MATERIAL: ALUMINUMREF. S/A - B.O.M.
- NOTES: UNLESS OTHERWISE SPECIFIED.**

CUSTOMER APPROVAL

Signature: _____
 Date: _____

IMPORTANT! THIS DRAWING SUPERSEDES ALL OTHER DOCUMENTS. By signing this approval you accept and agree that the dimensions and details shown are correct and properly fit your application, regardless of any differences between this drawing and any contract specifications. Should you see any errors in the drawing, or have any questions, please contact your Freeman Marine sales engineer for clarification.

REV.	DESCRIPTION:	DATE:	DRAWN:
-	INITIAL RELEASE	04NOV11	PPC

SPECIFICATIONS SUBJECT TO CHANGE WITHOUT NOTICE.

PROJECTION

UNLESS OTHERWISE SPECIFIED DIMENSIONS ARE IN INCHES. TOLERANCES FOR ROUGH AND CLEAR OPENING: .125 INCH. ALL OTHERS ARE:

.X .XX .XXX ANGLES
 ±.1 ±.03 ±.010 ±2°

DO NOT SCALE DRAWING

 28336 HUNTER CREEK ROAD GOLD BEACH, OR 97444 U.S.A. PHONE: 541-247-7078 FAX: 541-247-2114 www.freemanmarine.com		CLIENT: FREEMAN MARINE	
		TITLE: HATCH: 1218-HK, AL COVER	
SIZE: D	CAGE CODE: 64747	DRAWING NUMBER: 2471-0003	REV.:
SCALE: 2:3	CALC. WT.	ACT. WT.	SHEET 3 OF 3