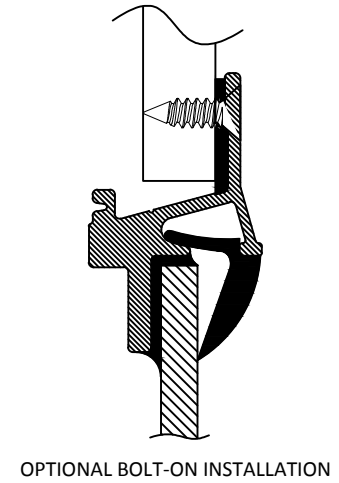
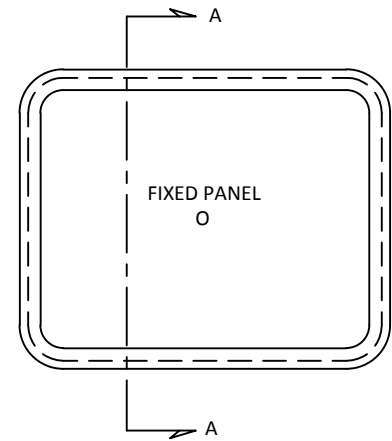
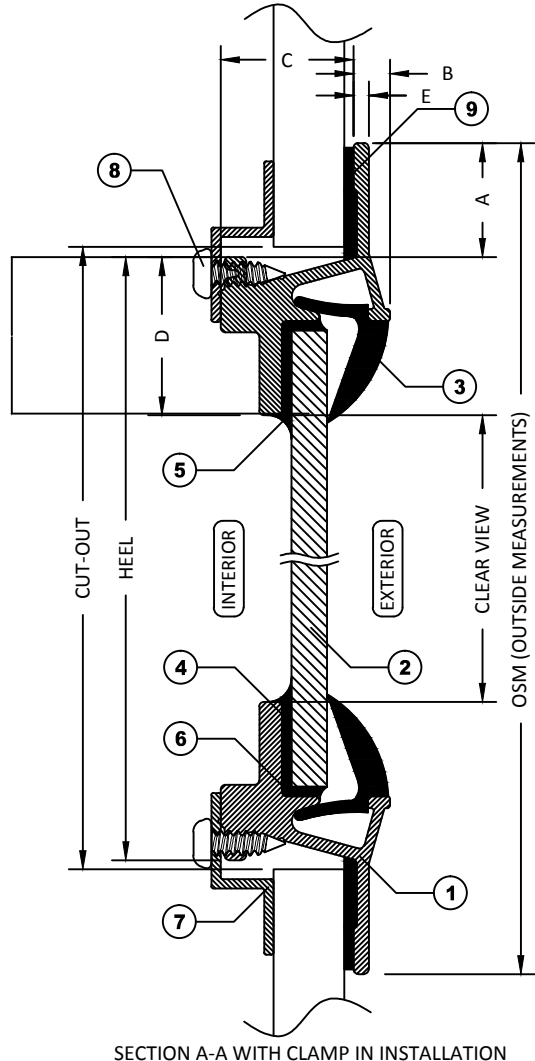


ITEMS			
ID	DESCRIPTION	MATERIAL	PART NUMBER
1	MOUNTING FRAME	6063 ALUMINUM	D11373
2	GLAZING	GLASS 6mm (1/4")	
3	FULCRUM GLAZING	SANTOPRENE	D10888
4	BUTYL TAPE		D10864
5	SEALANT	SILICONE	D10857
6	BACKFILL	URETHANE	D10858
7	TRIM RING	6063 ALUMINUM	
8	TRIM SCREWS	S.S.	D12239
9	BEDDING COMPOUND	CUSTOMER TO SUPPLY	

STANDARD DIMENSIONS		
ID	DESCRIPTION	DIMENSION
A	FLANGE COVERAGE	19mm (3/4")
B	EXTERIOR PROTRUSION	6mm (1/4")
C	INTERIOR PROTRUSION	22mm (7/8")
D	SPIGOT TO CLEAR VIEW	27mm (1 1/16")
E	FLANGE THICKNESS	3mm (1/8")



SECTION A-A WITH CLAMP IN INSTALLATION

NOTES:
 -GENERAL HEEL TOLERANCE +0/-1/4" OVERALL
 -AVAILABLE WITH 2 1/2"(64MM), 3"(76MM), 3 1/2"(89MM) RADIUS OR MITERED CORNERS
 -STANDARD MOUNTING HOLES ARE 3/16" WITH #10 COUNTERSUNK ON 6" NOMINAL CENTERS

DRAWING NUMBER		D5	DIAMOND SEA GLAZE MANUFACTURING LTD. 26995 GLOUCESTER WAY, LANGLEY B.C. CANADA V4W 3Y3 TOLL FREE: 1-800-770-0455 PHONE: 604-607-0091 FAX: 604-607-0092
SCALE	BY	NTS	



ALL DRAWINGS AND ANY ASSOCIATED INFORMATION HEREON CONTAIN PROPRIETARY AND/OR CONFIDENTIAL INFORMATION, AND SHALL NOT BE REPRODUCED, DISCLOSED OR SUBMITTED TO ANY THIRD PARTY WITHOUT PRIOR CONSENT FROM DIAMOND SEA GLAZE MANUFACTURING LTD.

ITEM NAME	D5	REVISION	2
ITEM DESCRIPTION	FIXED WINDOW		