

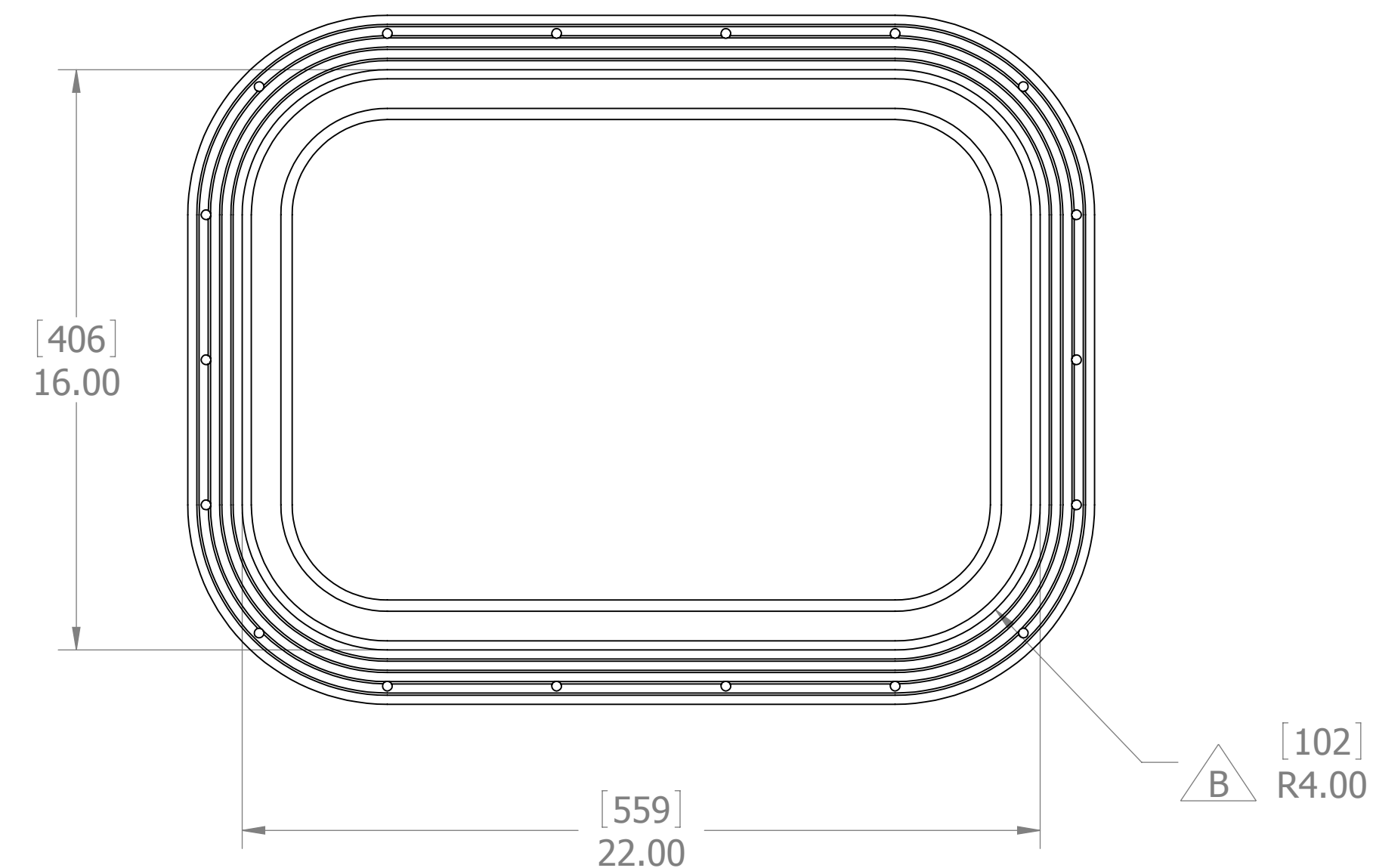
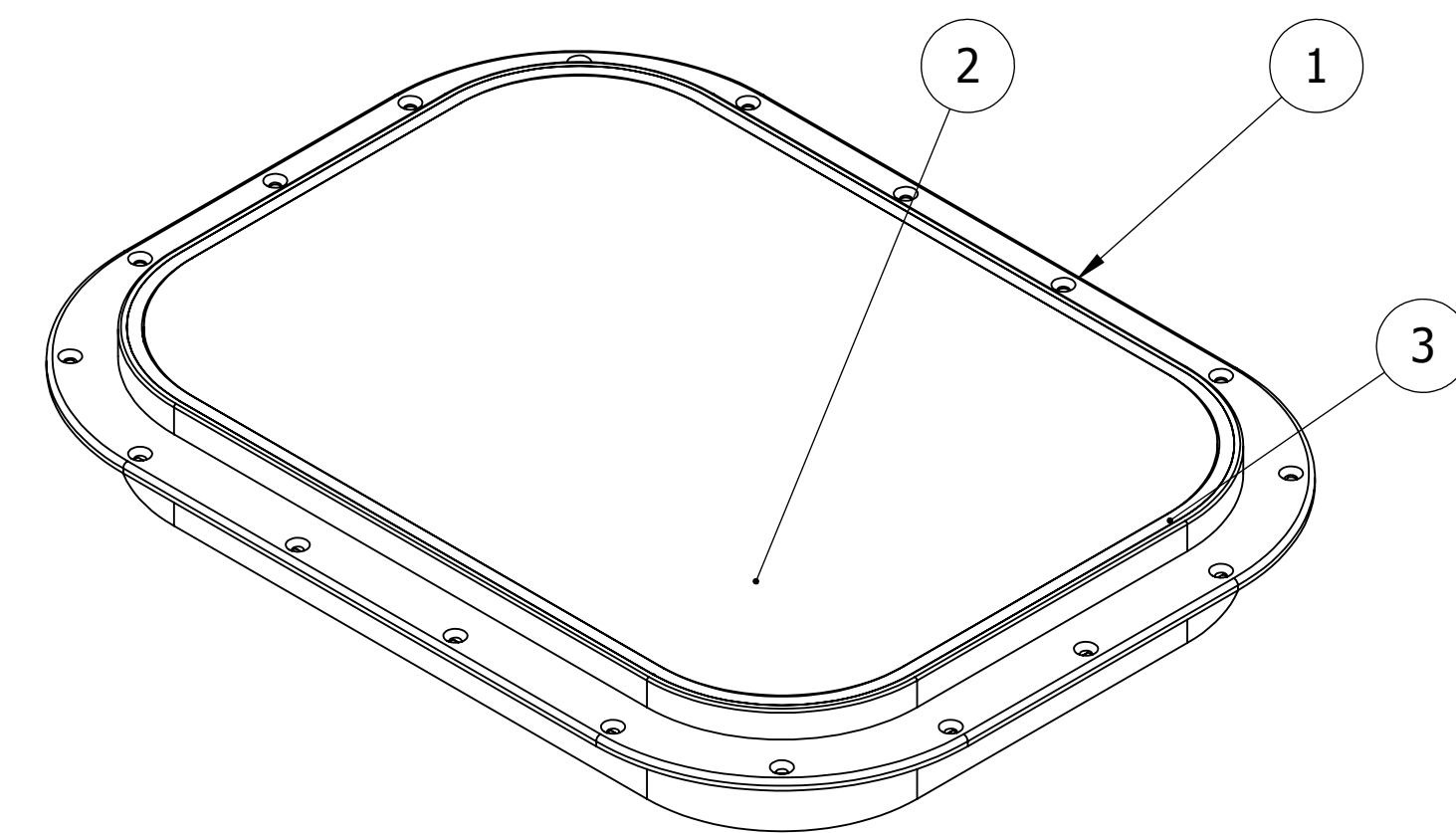
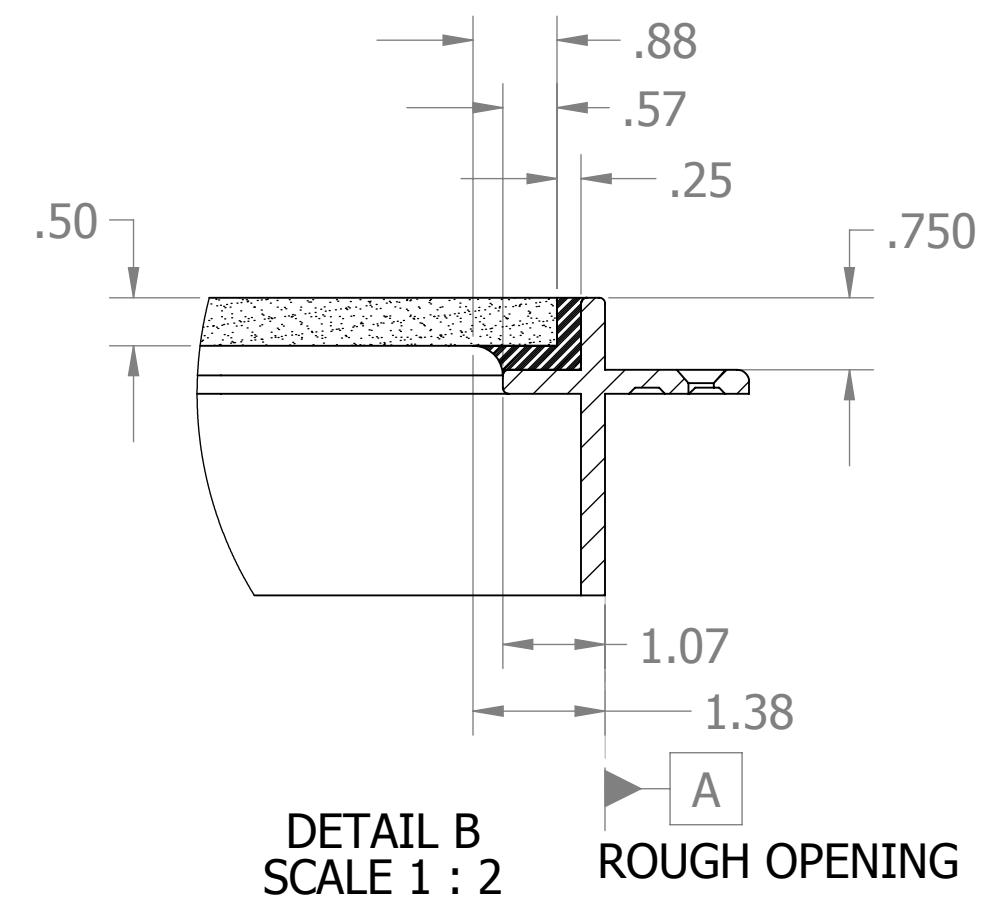
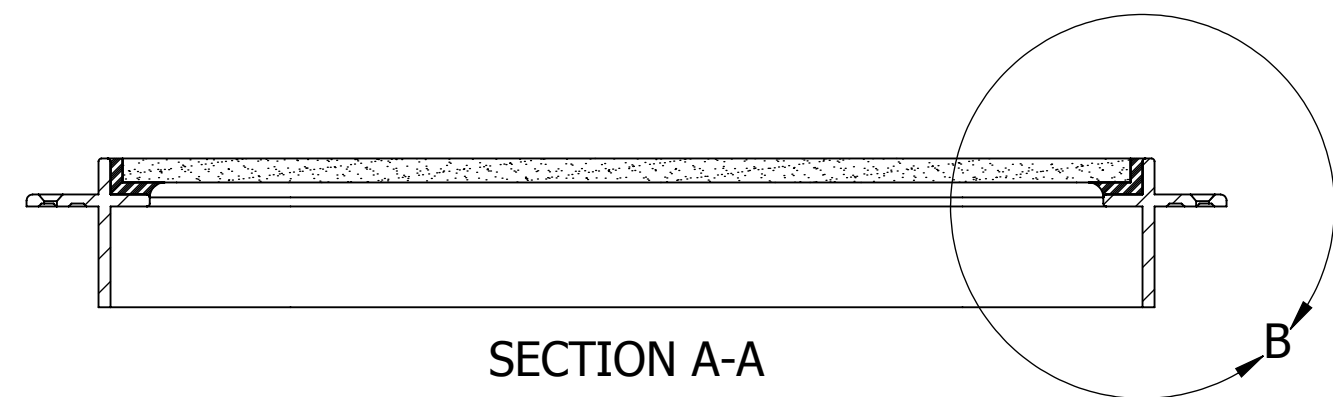
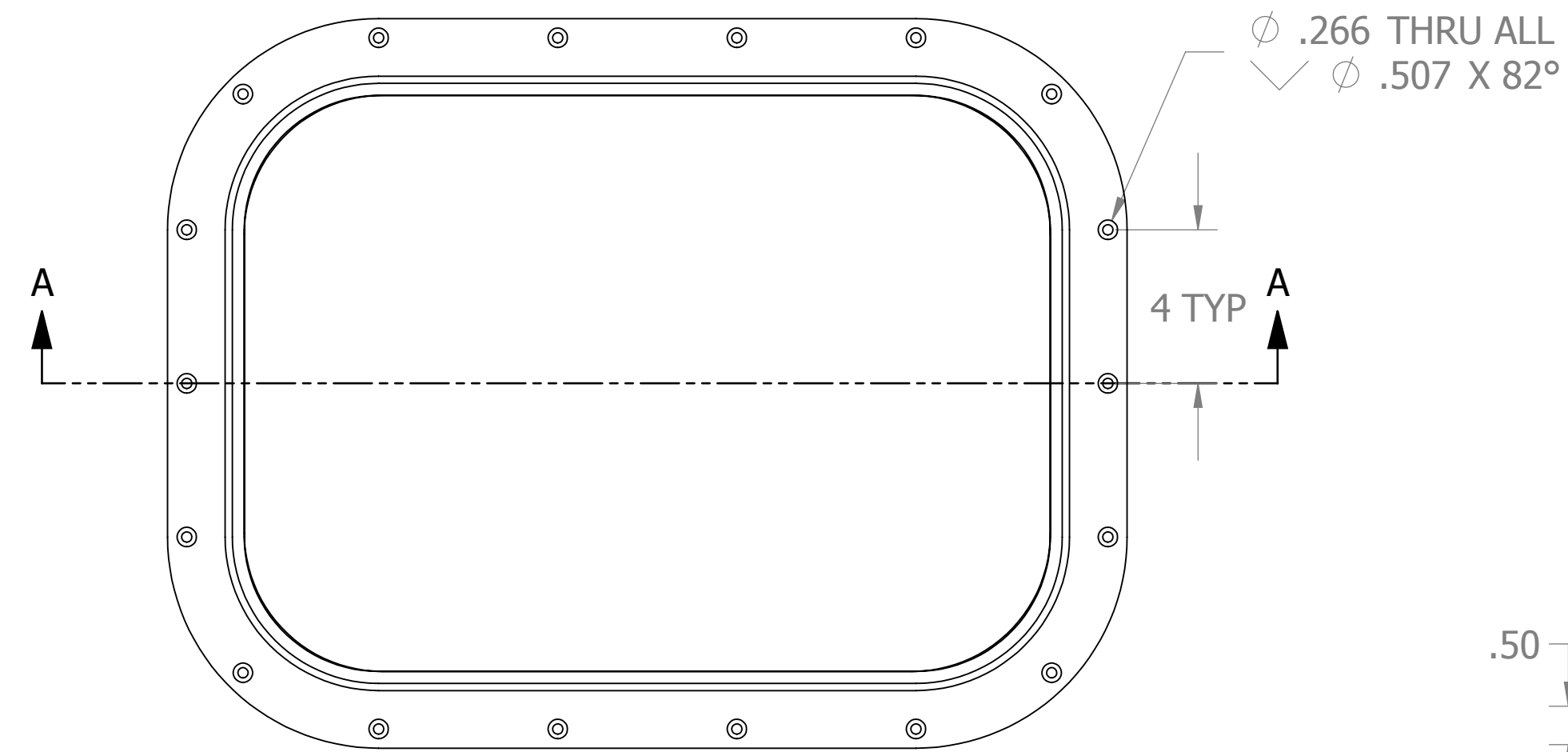
8 7 6 5 4 3 2 1

D

C

B

A



- 3. FINISH: 125 RMS MAX.
 - 2. BREAK SHARP EDGES AND DEBURR.
 - 1. MATERIAL: SEE PARTS LIST.
- NOTES: UNLESS OTHERWISE SPECIFIED.

CUSTOMER APPROVAL

Signature: _____
 Date: _____
 IMPORTANT! THIS DRAWING SUPERSEDES ALL OTHER DOCUMENTS. By signing this approval you accept and agree that the dimensions and details shown are correct and properly fit your application, regardless of any differences between this drawing and any contract specifications. Should you see any errors in the drawing, or have any questions, please contact your Freeman Marine sales engineer for clarification.

ITEM NO.	QTY.	PART NO.	MATERIAL	DESCRIPTION
3	1	P0001566-102	POLYURETHANE	ADHESIVE SEALANT, SIKAFLEX, 296
2	1	P0001566-101	GLASS	1/2" GLASS, GRAY TEMPERED
1	1	P0001566-100	ALUMINUM, 6061	EXTRUSION, 0611-9003

SPECIFICATIONS SUBJECT TO CHANGE WITHOUT NOTICE.

PROJECTION

UNLESS OTHERWISE SPECIFIED DIMENSIONS ARE IN INCHES, TOLERANCES FOR ROUGH AND CLEAR OPENING ± .125 INCH. ALL OTHERS ARE:

.X	.XX	.XXX	ANGLES
±.1	±.03	±.010	±2°

DO NOT SCALE DRAWING

FREEMAN MARINE EQUIPMENT, INC.

28336 HUNTER CREEK ROAD
 GOLD BEACH, OR 97444 U.S.A.
 PHONE: 541-247-7078 FAX: 541-247-2114
 www.freemanmarine.com

CONFIDENTIAL PROPERTY OF FREEMAN MARINE EQUIPMENT, INC. UNAUTHORIZED USE, REPRODUCTION OR DISTRIBUTION IS STRICTLY PROHIBITED. ALL COPIES REMAIN THE PROPERTY OF FREEMAN MARINE EQUIPMENT, INC. AND MUST BE RETURNED UPON REQUEST.

CLIENT: _____

TITLE: _____

DRAWN: A OLSEENE	DATE: 02SEP03
CHECKED: M STENDER	DATE: 04OCT12
ENGR: _____	DATE: _____
DESIGN ACTIVITY: _____	DATE: _____
CONTRACT NO.:	_____

SIZE: D	CAGE CODE: 64747	DRAWING NUMBER: P0001566-001	REV. 13
SCALE: 1:4	CALC. WT.	ACT. WT.	SHEET 1 OF 1

REV.	DESCRIPTION	DATE	DRAWN
-	INITIAL RELEASE	02SEP03	AEO
A	REVISED GLASS TO GREY COLOR AND EXPANSION JOINT WAS .19	14DEC06	MKF
B	GLASS: CLEAR WAS GREY, R4.0 WAS R4.1, UPDATE TITLE BLK	04OCT12	GJM
13	GLASS WAS CLEAR NOW GRAY	12DEC17	ZC