

WINDOW LOCATIONS

3RD MATE'S HINGED OUTSWING WINDOW
2ND ENGINEER'S HINGED OUTSWING WINDOW
2ND MATE'S HINGED OUTSWING WINDOW
SENIOR ENGINEER'S HINGED OUTSWING WINDOW
CHIEF MATE'S HINGED OUTSWING WINDOW
CHIEF ENGINEER'S HINGED OUTSWING WINDOW
CAPTAIN'S FORWARD HINGED OUTSWING WINDOW
CAPTAIN'S AFT HINGED OUTSWING WINDOW
CHIEF SCIENTIST'S HINGED OUTSWING WINDOW
LAUNDRY HINGED OUTSWING WINDOW
ELECTRONICS ROOM HINGED OUTSWING WINDOW
SHIPS OFFICE HINGED OUTSWING WINDOW
SPARE HINGED OUTSWING WINDOW

REVISIONS

REV.	DESCRIPTION	BY	DATE
00	CUSTOMER APPROVAL	MT	12/16/16
01	BOM CORRECTION	MT	12/22/16
02	BOM MATERIAL CORRECTION	MT	01/18/17
03	TITLE CORRECTION	MXC	1/26/2017
A	RELEASED FOR PRODUCTION	DVL	2017-03-22

GENERAL NOTES

1. INSTALLATION: BOLT-IN
2. BUILD TO CLEAR OPENING.
3. GLASS SHALL BE 15mm CLEAR TEMPERED
4. SEALING STANDARD: VI (CHALK TEST)
5. APPROX WEIGHT: 82.1821kg
6. FINISH: B - COMMERCIAL QUALITY - POWDERCOAT RAL 9003 SIGNAL WHITE.
7. WINDOWS REQUIRE LR APPROVAL.

FOR ADDITIONAL INFORMATION CONTACT YOUR SALES REPRESENTATIVE OR PROJECT MANAGER.

CUSTOMER APPROVAL

IMPORTANT! THIS DRAWING SUPERSEDES ALL OTHER DOCUMENTS. BY SIGNING THIS APPROVAL YOU ACCEPT AND AGREE THAT THE DIMENSIONS AND DETAILS SHOWN ARE CORRECT AND PROPERLY FIT YOUR APPLICATION, REGARDLESS OF ANY DIFFERENCES BETWEEN THIS DRAWING AND ANY PRIOR CONTRACT SPECIFICATIONS. SHOULD YOU HAVE ANY QUESTIONS OR SEE ANY ERRORS, DO NOT SIGN THIS APPROVAL UNTIL THE DRAWING IS CORRECTED.

SIGN _____ DATE _____

UNLESS OTHERWISE SPECIFIED, DIMENSIONS ARE IN MILLIMETERS. TOLERANCES FOR ROUGH AND CLEAR OPENINGS ARE ±3mm (.125"). ALL OTHERS ARE:

METRIC	X	.X	.XX	ANGLES
	±2.5	±.8	±.25	±2°
IMPERIAL	.X	.XX	.XXX	ANGLES
	±.1	±.03	±.010	±2°

BAR CODE	CAGE CODE
	64747



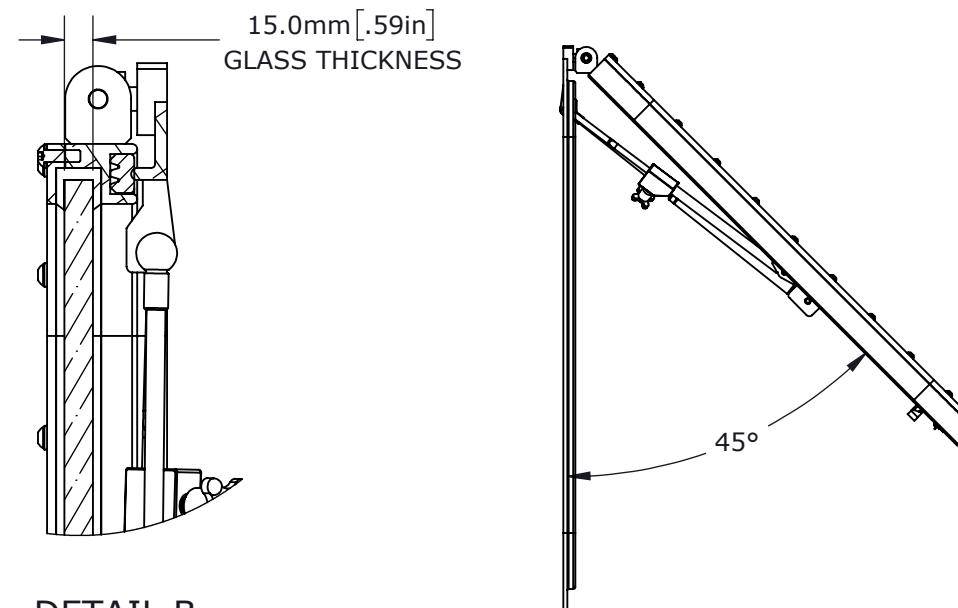
COPYRIGHT 2016 ADVANTEC GLOBAL INNOVATIONS. ALL RIGHTS RESERVED. CONFIDENTIAL PROPERTY OF ADVANTEC GLOBAL INNOVATIONS. UNAUTHORIZED USE, REPRODUCTION OR DISTRIBUTION IS STRICTLY PROHIBITED. COPIES REMAIN THE PROPERTY OF ADVANTEC GLOBAL INNOVATIONS AND MUST BE RETURNED UPON REQUEST.

CLIENT _____
PROJECT TITLE _____

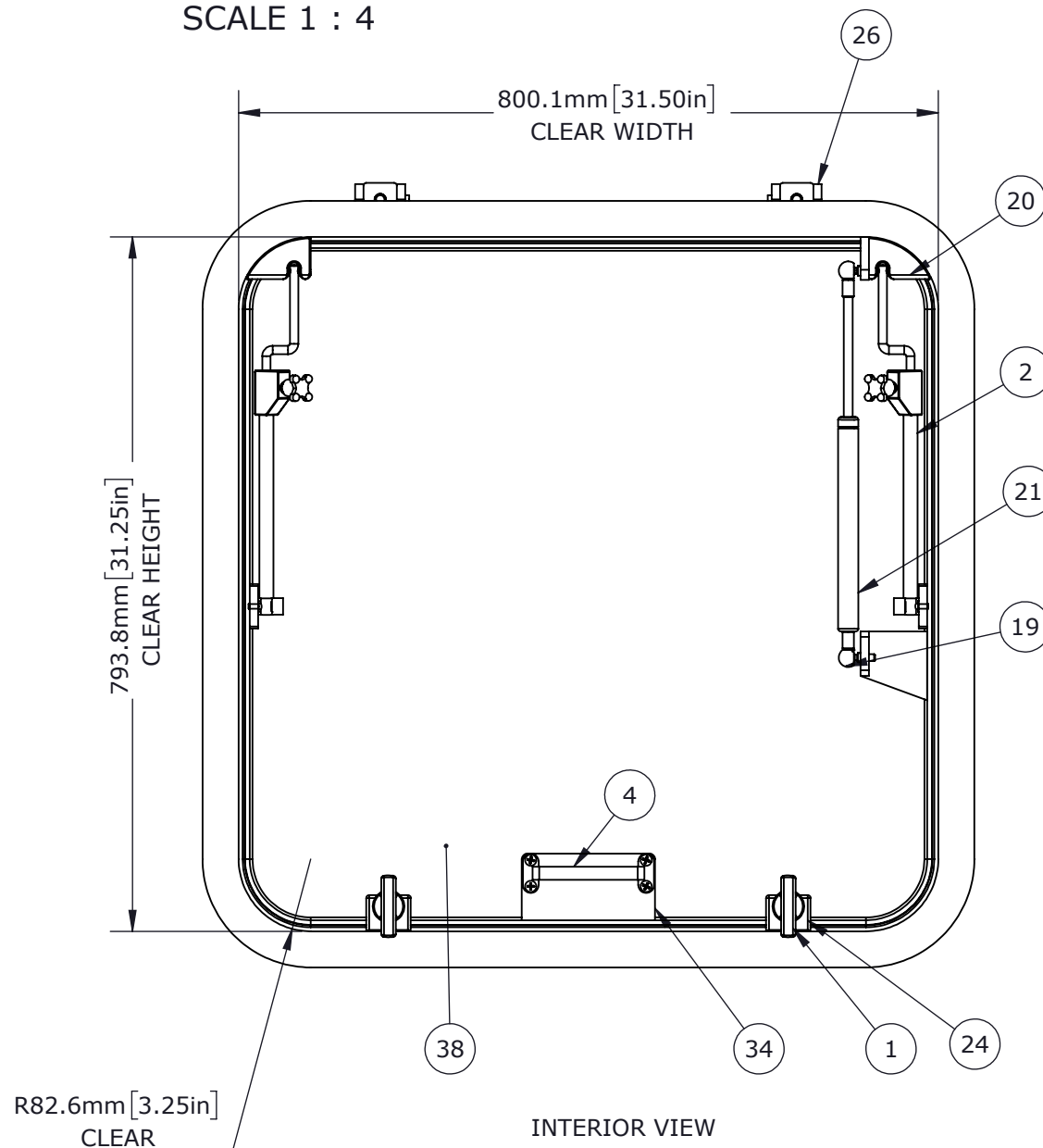
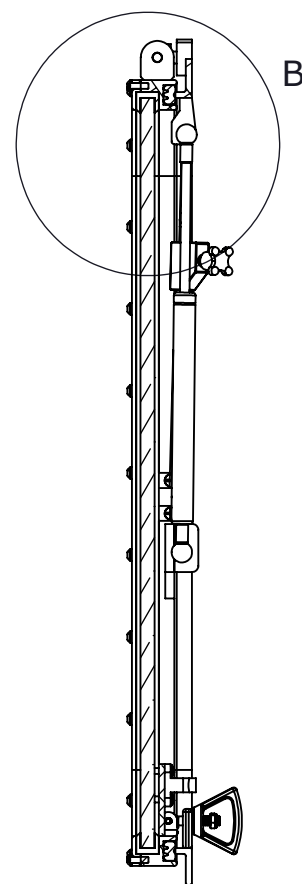
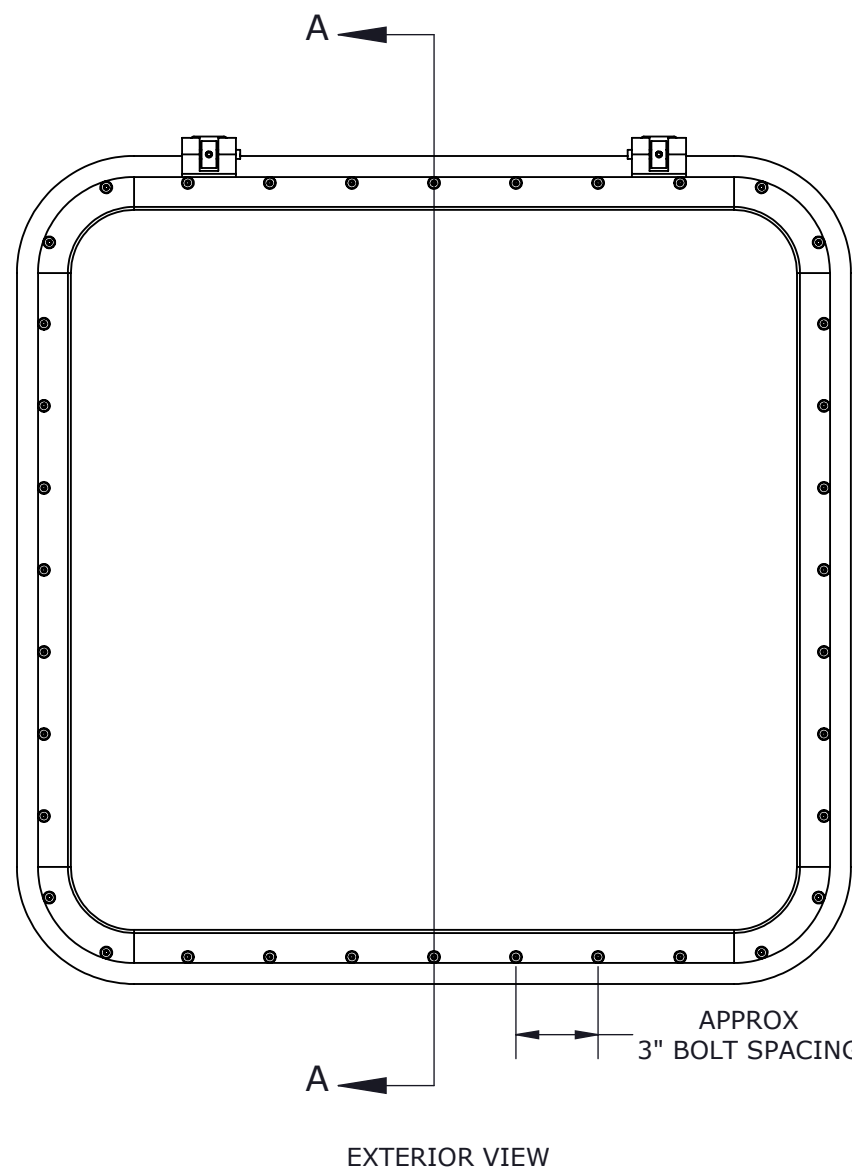
DWG TITLE: **FREEMAN SERIES 5220 WINDOW** QTY: -

SCALE	DRAWN	DATE	CHECKED	DATE	SIZE
1:8	MT	16-Dec-16	AV	16-Dec-16	B

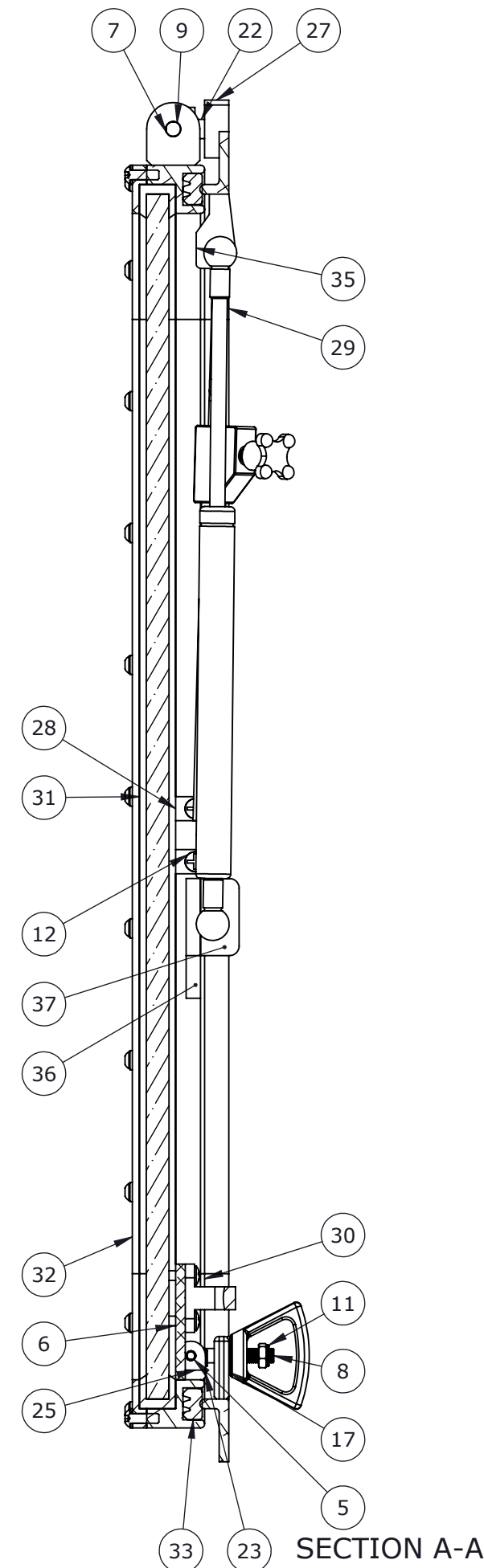
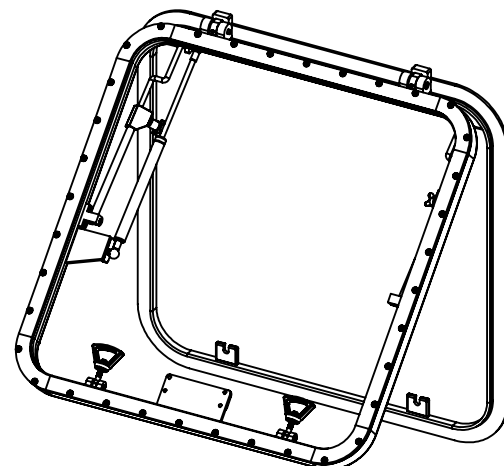
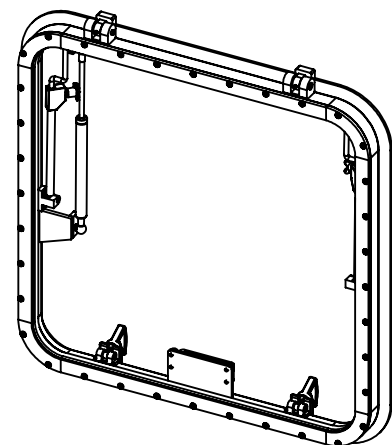
S.O. NO	DWG NO	SHEET	REV
49834	P0006513-001	1 of 2	A



DETAIL B
SCALE 1 : 4



ITEM	QTY	PART NUMBER	DESCRIPTION	MATERIAL
1	2	0011-2024	KNOB, BELL, 3/8-16 HELICOIL, VIB FINIS	ALUMINUM, 535
2	1	0031-2047	HOLD OPEN ASSY, STRAIGHT -005 MLB WINDOW	REF. S/A - B.O.M.
3	1	0031-2049	HOLD OPEN ASSY, STRAIGHT -006 MLB WINDOW	REF. S/A - B.O.M.
4	1	0242-2001	HANDLE, FT-150 MIRROR FINISH, S/S	STAINLESS STEEL
5	2	0411-2002	PIN KNURLED .25 X 1.50IN SS 316	SS 316/316L
6	4	0411-2017	SCREW, OH P .25-20X.75IN	SS 316LD
7	2	0411-2023	SCREW SET .312IN-18 X .375IN SS 316	SS 316/316L
8	2	0411-2059	BOLT, 2.5 DROP, .359 EYE, EP	STAINLESS STEEL, 316L
9	2	0411-2063	SCREW, SH A .375-16X2IN	SS 316LD
10	2	0411-2083	SCREW, SH CAP, 10-24 X 1-1/2	STAINLESS STEEL, 304
11	2	0411-2130	LOCKNUT, NYLON INSERT JAM, 3/8-16	SS, 316
12	4	0411-2166	SCREW FH P .25-20 X .50IN	SS SS 316/316L
13	36	0411-2251	WASHER .255 X .468 X .062IN SS 316	SS 316/316L
14	36	0411-2283	SCREW BH A .25-20 X .75IN SS 316	SS 316/316L
15	2	0411-2290	SCREW, SH CAP	AISI 316L STAINLESS STEEL
16	37	0413-2001	WASHER, .260 X .500 X .031	NYLON
17	2	0413-2002	WASHER, .406 X 1.000 X .062	NYLON
18	4	0413-2003	WASHER, .190 X .437 X .031, NYLON WHITE	NYLON
19	2	0423-2212	BALL JOINT, M8 x 30MM	STAINLESS STEEL, 316L
20	2	0423-2308	BRACKET, WELD-ON	ALUMINUM
21	1	0423-2351	GAS SPRING, 10/23 - 200 HEAVY OIL	STAINLESS STEEL
22	2	0431-2003	BOLT, HINGE: 175-017 WINDOW	STAINLESS STEEL
23	2	0431-2018	SPRING, DROP BOLT	STAINLESS STEEL
24	2	0435-2008	BRACKET, DROP BOLT: WELD-ON WINDOW CMG	ALUMINUM
25	2	0435-2009	BRACKET, DROP BOLT: WELD-ON WINDOW FRM	ALUMINUM
26	2	0435-2013	BRACKET, HINGE, WINDOW COAMING	ALUMINUM, 6061
27	2	0435-2014	BRACKET, HINGE: WINDOW FRAME, WELD-ON	ALUMINUM, 6061
28	2	0435-2016	BRACKET, HOLD OPEN, WINDOW FRAME	ALUMINUM
29	1	P0006513-001-201	FRAME, WINDOW	ALUMINUM, 6061-T4/T451 (0611-9025-LR)
30	1	P0006513-001-301	FRAME, LENS	ALUMINUM, 6061-T4/T451 (0611-9024-LR)
31	1	P0006513-001-302	GLAZING W/ SET BLOCK & CAP BEAD	SIKAFLEX 295, BK
32	1	P0006513-001-305	RETAINER, WINDOW	ALUMINUM, EXTRUSION, AL 6061-T4 (0611-9062-LR)
33	1	P0006513-001-306	GASKET	NEOPRENE (0631-9810)
34	1	P0006513-001-307	HANDLE BRACE	PLATE, AL 5052-H32 .25IN (0711-2104)
35	1	P0006513-001-308	GAS SHOCK BRACKET	PLATE, AL 5052-H32 .375IN (0711-2107)
36	1	P0006513-001-310	GAS SHOCK LOWER BRACKET A	PLATE, AL 5052-H32 .375IN (0711-2107)
37	1	P0006513-001-311	GAS SHOCK LOWER BRACKET B	PLATE, AL 5052-H32 .375IN (0711-2107)
38	1	P0006513-001-901	LENS, WINDOW	GLASS, 15MM CLEAR TEMP



REVISIONS

SEE PAGE 1 FOR ALL REVISIONS

GENERAL NOTES

1. SEE PAGE 1.

CUSTOMER APPROVAL

IMPORTANT! THIS DRAWING SUPERSEDES ALL OTHER DOCUMENTS. BY SIGNING THIS APPROVAL YOU ACCEPT AND AGREE THAT THE DIMENSIONS AND DETAILS SHOWN ARE CORRECT AND PROPERLY FIT YOUR APPLICATION, REGARDLESS OF ANY DIFFERENCES BETWEEN THIS DRAWING AND ANY PRIOR CONTRACT SPECIFICATIONS. SHOULD YOU HAVE ANY QUESTIONS OR SEE ANY ERRORS, DO NOT SIGN THIS APPROVAL UNTIL THE DRAWING IS CORRECTED.

SIGN _____ DATE _____

UNLESS OTHERWISE SPECIFIED, DIMENSIONS ARE IN MILLIMETERS. TOLERANCES FOR ROUGH AND CLEAR OPENINGS ARE ±3mm (.125"). ALL OTHERS ARE:

METRIC	X	.X	.XX	ANGLES
	±2.5	±.8	±.25	±2°
IMPERIAL	.X	.XX	.XXX	ANGLES
	±.1	±.03	±.010	±2°

BAR CODE _____ CAGE CODE 64747



COPYRIGHT 2016 ADVANTEC GLOBAL INNOVATIONS. ALL RIGHTS RESERVED. CONFIDENTIAL PROPERTY OF ADVANTEC GLOBAL INNOVATIONS. UNAUTHORIZED USE, REPRODUCTION OR DISTRIBUTION IS STRICTLY PROHIBITED. COPIES REMAIN THE PROPERTY OF ADVANTEC GLOBAL INNOVATIONS AND MUST BE RETURNED UPON REQUEST.

CLIENT _____ PROJECT TITLE _____

DWG TITLE						QTY
FREEMAN SERIES 5220 WINDOW						-
SCALE	DRAWN	DATE	CHECKED	DATE	SIZE	
1:4	MT	16-Dec-16	AV	16-Dec-16	B	
S.O. NO	DWG NO	SHEET		REV		
49834	P0006513-001	2 of 2		A		