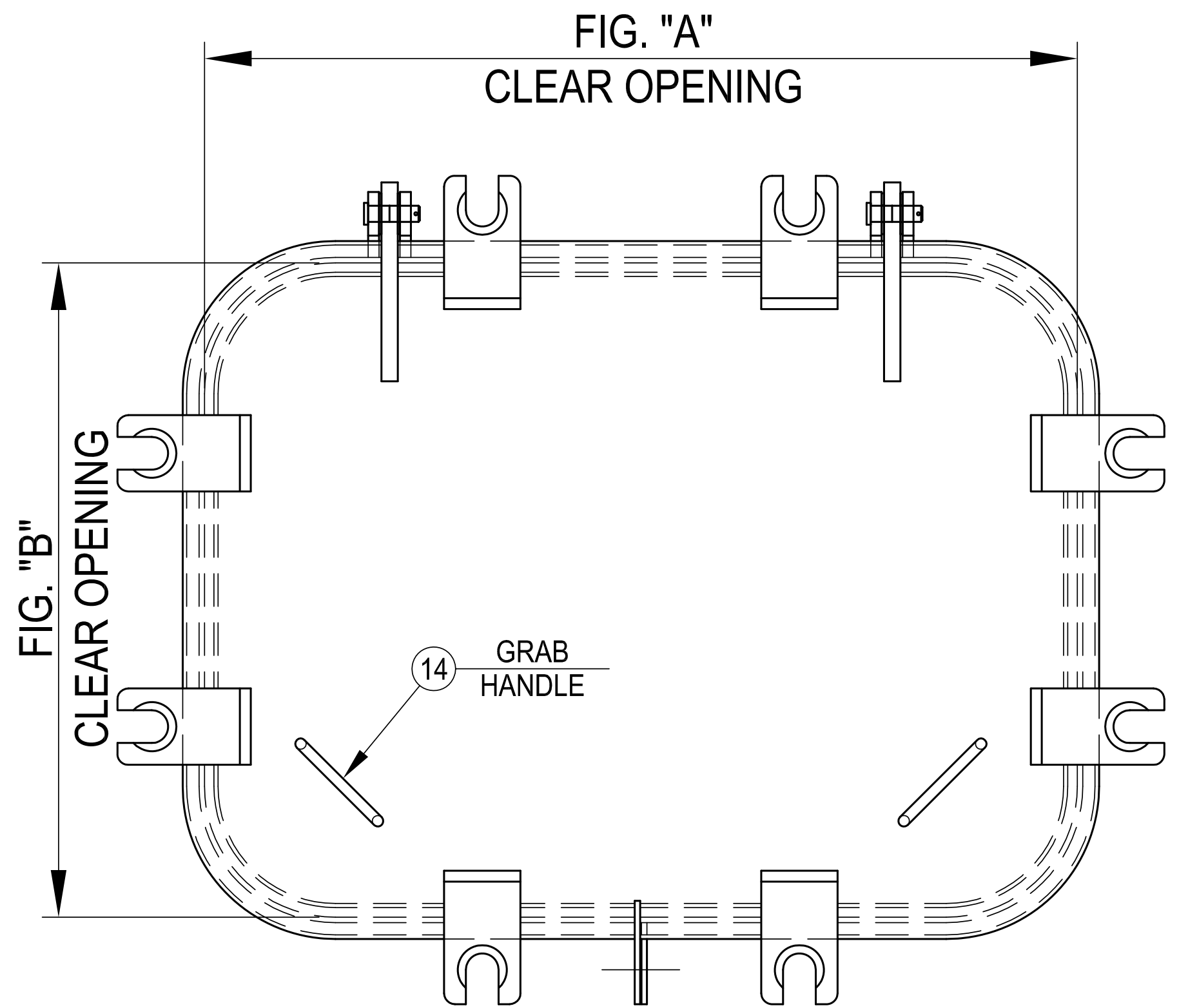
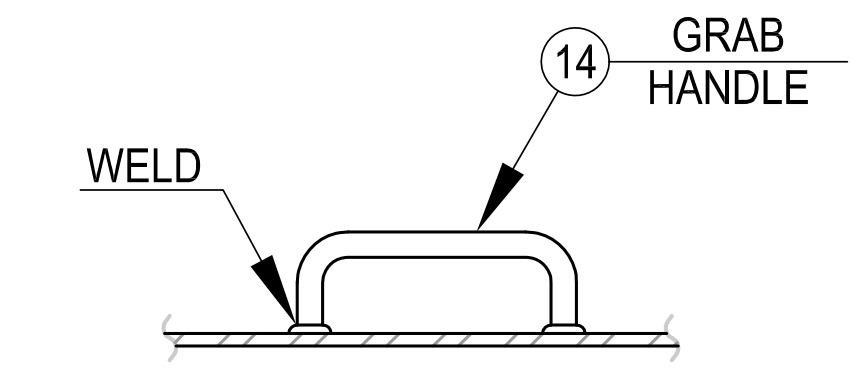


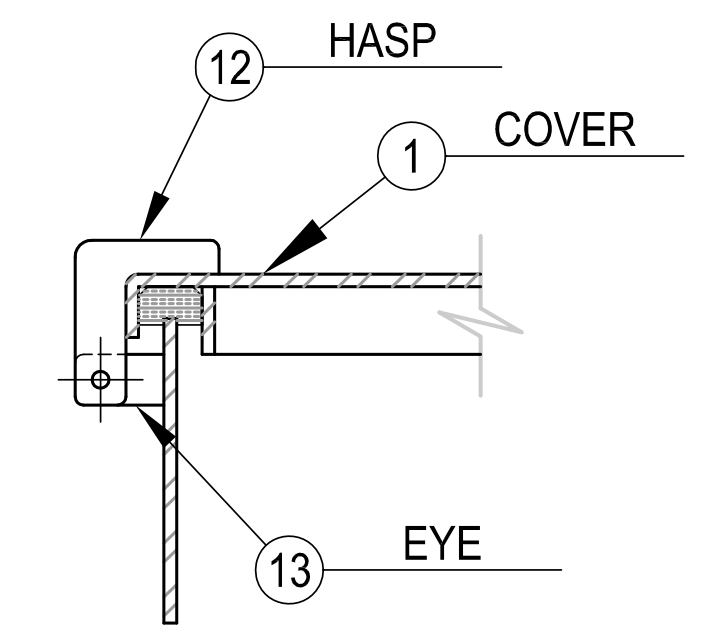
D  
C  
B  
A



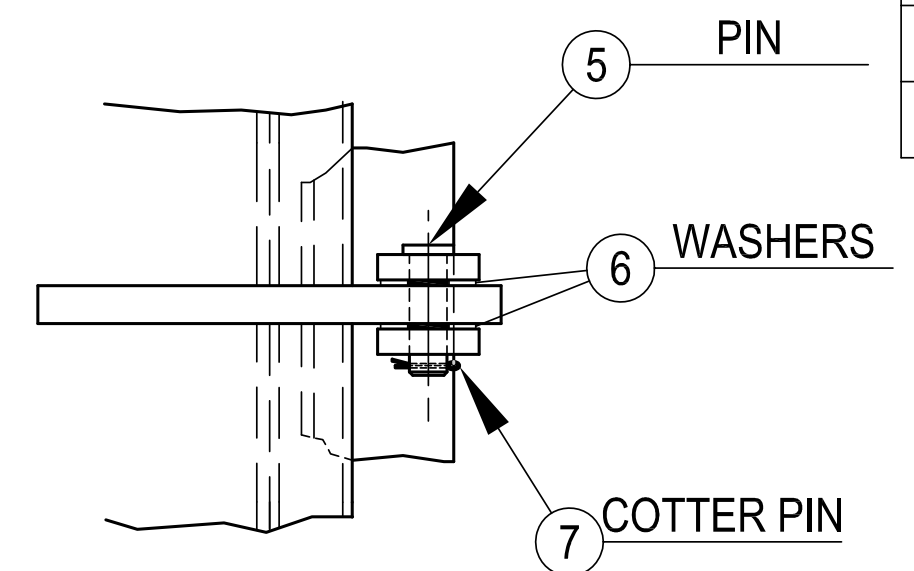
PLAN



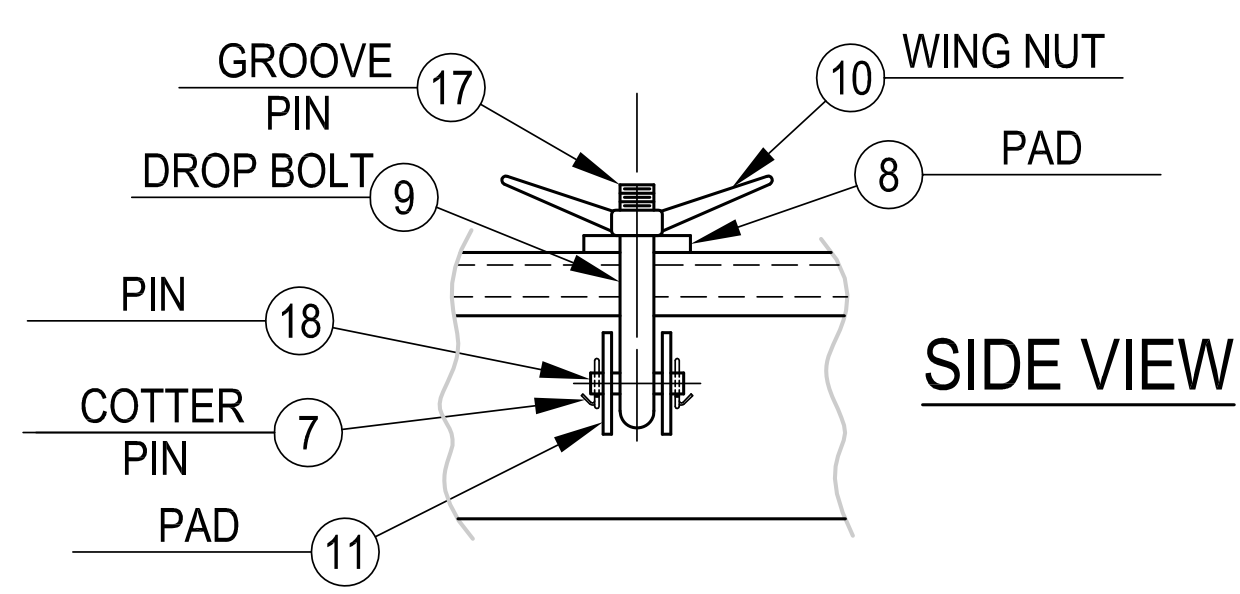
DETAIL OF GRAB HANDLE



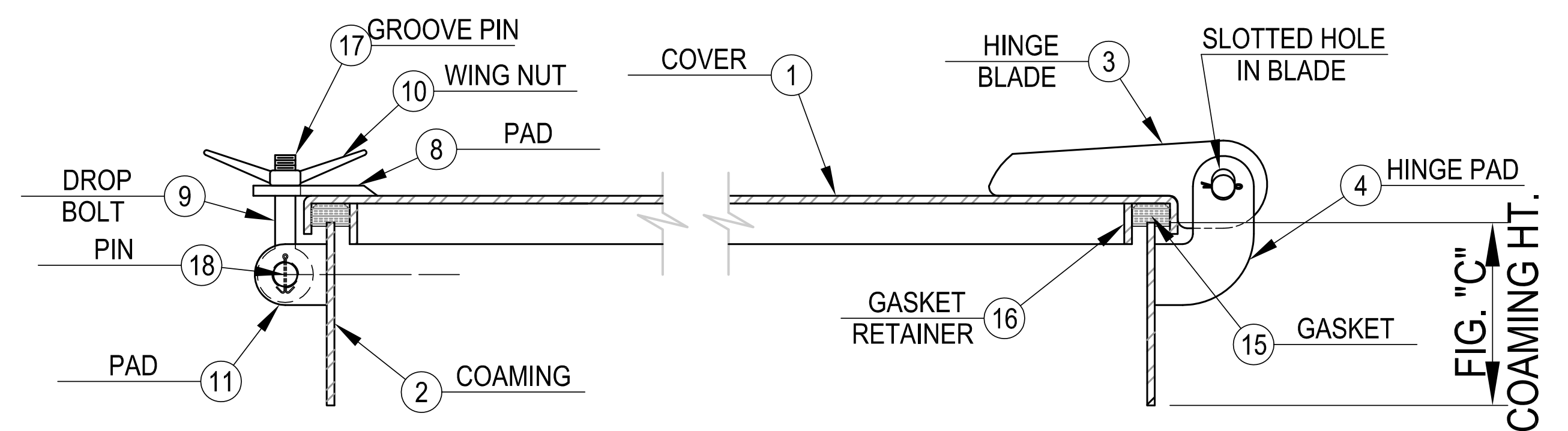
DETAIL OF HASP & EYE



DETAIL OF HINGE



SIDE VIEW



SECTION

SCHEDULE OF MATERIALS		
PC.	MATERIAL	REMARKS
1	MILD STEEL	
2	MILD STEEL	
3	MILD STEEL	
4	MILD STEEL	
5	BRASS	
6	STAINLESS	
7	STAINLESS	
8	MILD STEEL	
9	BRONZE	
10	BRONZE	
11	MILD STEEL	
12	MILD STEEL	
13	MILD STEEL	
14	MILD STEEL	
15	NEOPRENE	
16	MILD STEEL	
17	STAINLESS	
18	BRASS	

NOTES: UNLESS OTHERWISE SPECIFIED.

CUSTOMER APPROVAL  
 Signature: \_\_\_\_\_  
 Date: \_\_\_\_\_  
 IMPORTANT! THIS DRAWING SUPERSEDES ALL OTHER DOCUMENTS. By signing this approval you accept and agree that the dimensions and details shown are correct and properly fit your application, regardless of any differences between this drawing and any contract specifications. Should you see any errors in the drawing, or have any questions, please contact your Freeman Marine sales engineer for clarification.

SPECIFICATIONS SUBJECT TO CHANGE WITHOUT NOTICE.	
PROJECTION	
UNLESS OTHERWISE SPECIFIED DIMENSIONS ARE IN INCHES. TOLERANCES FOR ROUGH AND CLEAR OPENING ± .125 INCH. ALL OTHERS ARE:	
.X	.XX .XXX ANGLES
±.1	±.03 ±.010 ±2°
DO NOT SCALE DRAWING	
00	PRODUCTION RELEASE
REV.	DESCRIPTION
DATE:	DRAWN

**FREEMAN MARINE EQUIPMENT, INC.**  
 28336 HUNTER CREEK ROAD  
 GOLD BEACH, OR 97444 U.S.A.  
 PHONE: 541-247-7078 FAX: 541-247-2114  
 www.freemanmarine.com

CONFIDENTIAL PROPERTY OF FREEMAN MARINE EQUIPMENT, INC. UNAUTHORIZED USE, REPRODUCTION OR DISTRIBUTION IS STRICTLY PROHIBITED. ALL COPIES REMAIN THE PROPERTY OF FREEMAN MARINE EQUIPMENT, INC. AND MUST BE RETURNED UPON REQUEST.

CLIENT: **FREEMAN MARINE**

TITLE: **WATERTIGHT HATCH W/ DROP BOLTS**

SIZE: **D** CAGE CODE: **64747** DRAWING NUMBER: **200-MS** REV. **00**

SCALE: 1:5.5 CALC. WT. ACT. WT. SHEET 1 OF 1