

8

7

6

5

4

3

2

1

D

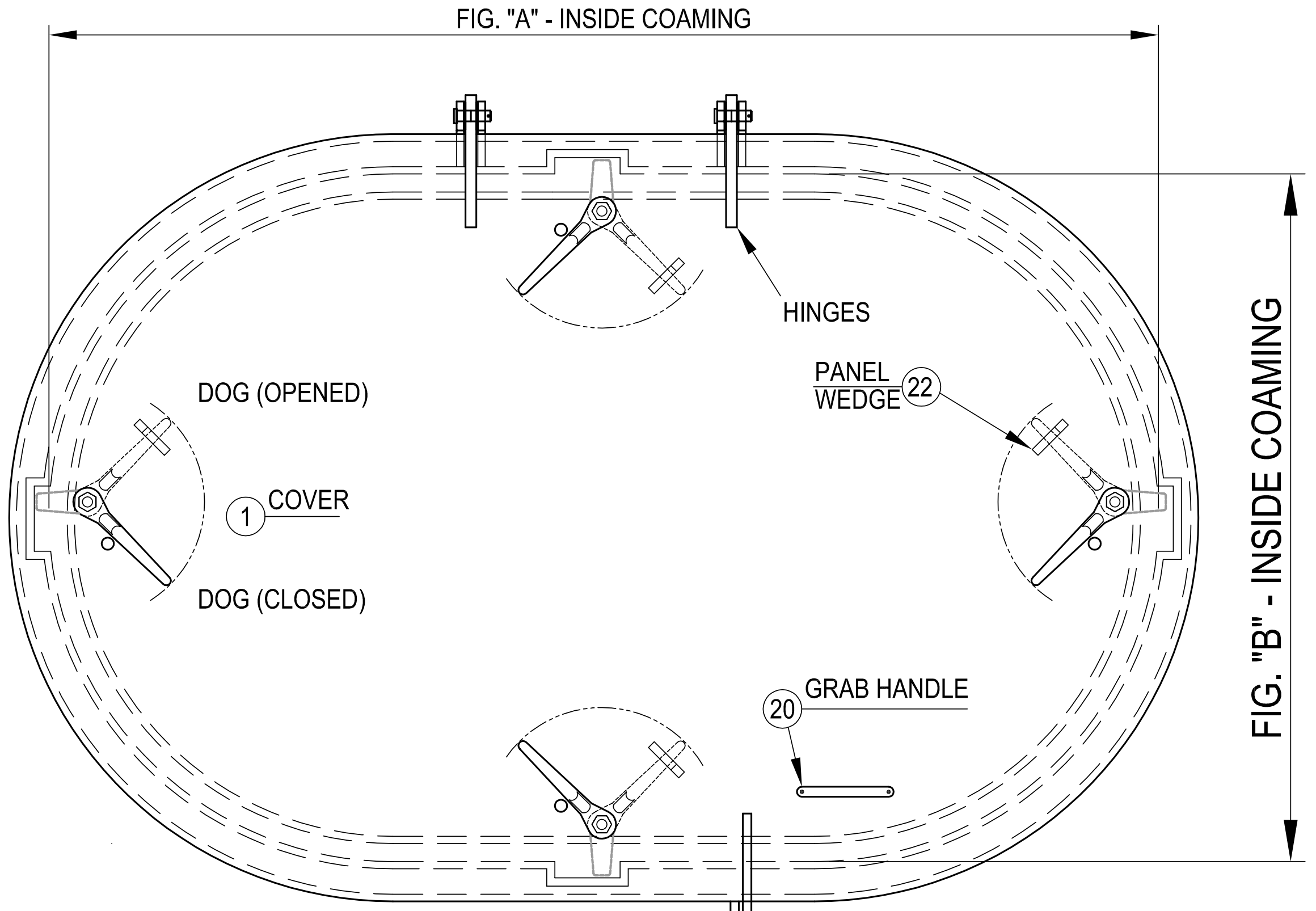
C

B

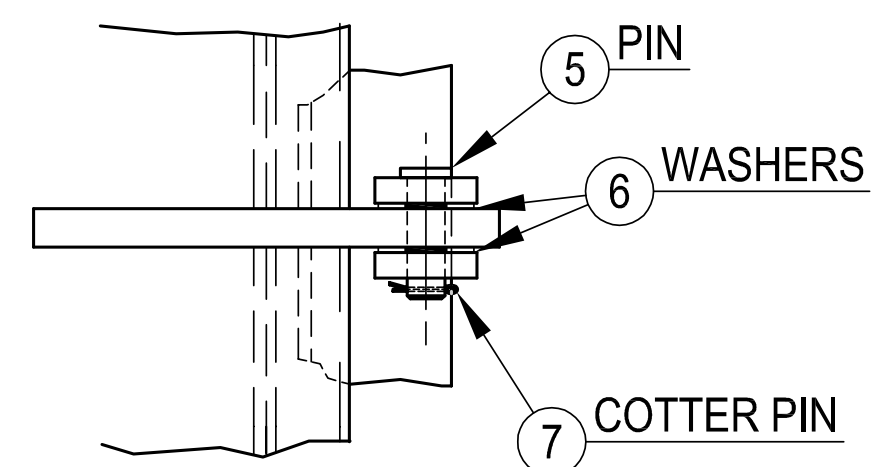
A

### SCHEDULE OF MATERIALS

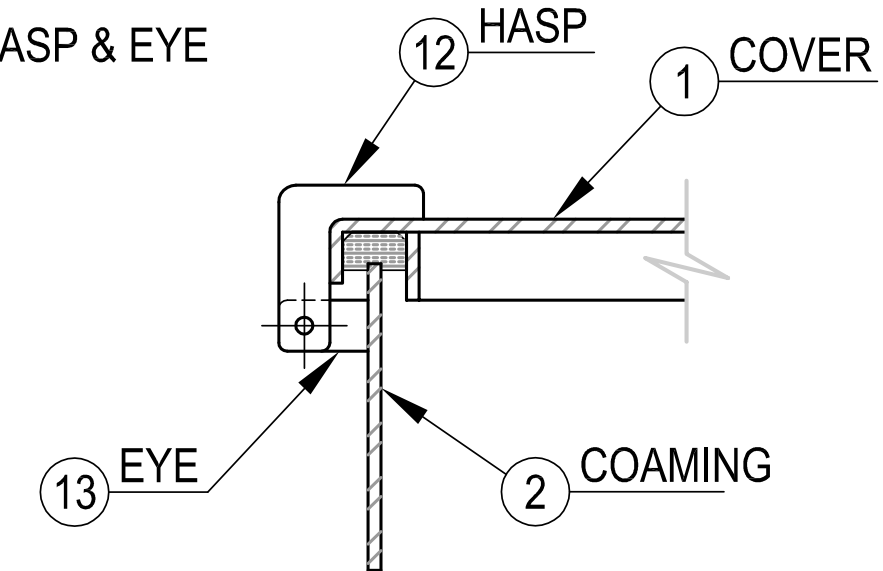
PC.	MATERIAL	REMARKS
1	MILD STEEL	
2	MILD STEEL	
3	MILD STEEL	
4	MILD STEEL	
5	BRASS	
6	STAINLESS	
7	STAINLESS	
8	NEOPRENE	
9	DELTRIN	
10	PLATED STEEL	
11	FORGED STEEL	
12	MILD STEEL	
13	MILD STEEL	
14	MILD STEEL	
15	FORGED STEEL	
16	MILD STEEL	
17	MILD STEEL	
18	FORGED STEEL	
19	MILD STEEL	
20	MILD STEEL	
21	PLATED STEEL	
22	MILD STEEL	
23	TEFLON	



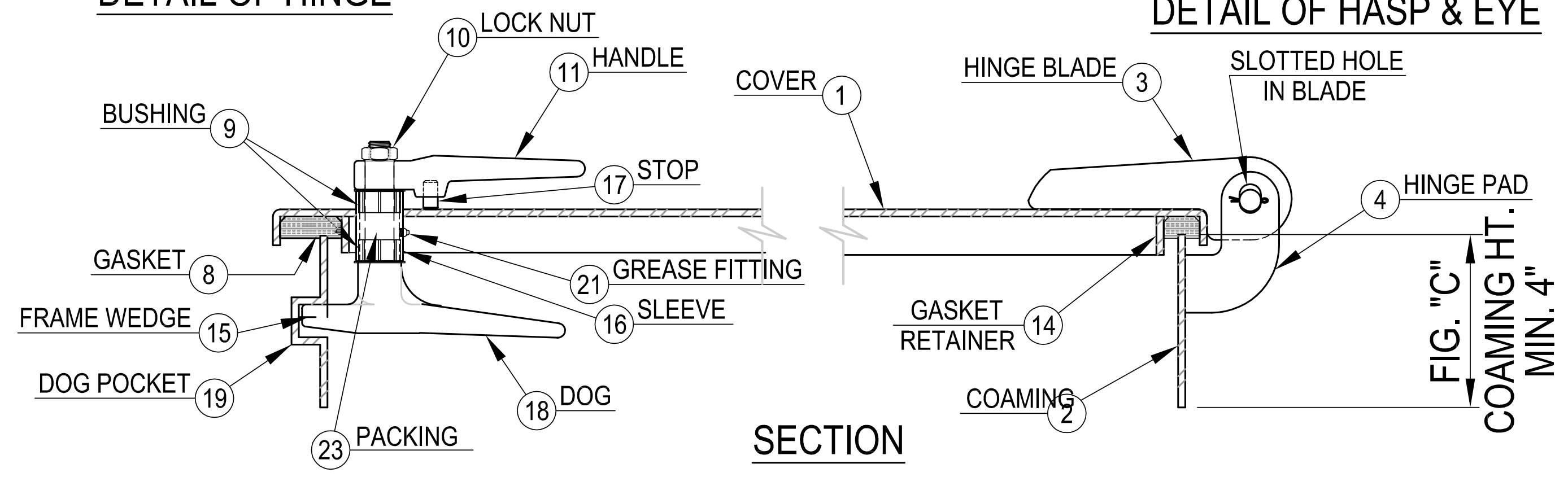
### PLAN



### DETAIL OF HINGE



### DETAIL OF HASP & EYE



### SECTION

NOTES: UNLESS OTHERWISE SPECIFIED.

**CUSTOMER APPROVAL**

Signature: \_\_\_\_\_  
 Date: \_\_\_\_\_

IMPORTANT! THIS DRAWING SUPERSEDES ALL OTHER DOCUMENTS. By signing this approval you accept and agree that the dimensions and details shown are correct and properly fit your application, regardless of any differences between this drawing and any contract specifications. Should you see any errors in the drawing, or have any questions, please contact your Freeman Marine sales engineer for clarification.

SPECIFICATIONS SUBJECT TO CHANGE WITHOUT NOTICE.			
PROJECTION			
UNLESS OTHERWISE SPECIFIED DIMENSIONS ARE IN INCHES, TOLERANCES FOR ROUGH AND CLEAR OPENING ± .125 INCH. ALL OTHERS ARE:			
.X	.XX	.XXX	ANGLES
±.1	±.03	±.010	±2°
DO NOT SCALE DRAWING			
00	PRODUCTION RELEASE	2/27/20	ZC
REV.	DESCRIPTION:	DATE:	DRAWN

**FREEMAN MARINE EQUIPMENT, INC.**  
 28336 HUNTER CREEK ROAD  
 GOLD BEACH, OR 97444 U.S.A.  
 PHONE: 541-247-7078 FAX: 541-247-2114  
 www.freemanmarine.com

CONFIDENTIAL PROPERTY OF FREEMAN MARINE EQUIPMENT, INC. UNAUTHORIZED USE, REPRODUCTION OR DISTRIBUTION IS STRICTLY PROHIBITED. ALL COPIES REMAIN THE PROPERTY OF FREEMAN MARINE EQUIPMENT, INC. AND MUST BE RETURNED UPON REQUEST.

CLIENT: **FREEMAN MARINE**

TITLE: **WATERTIGHT HATCH W/DOGS**

SIZE: **D** CAGE CODE: **64747** DRAWING NUMBER: **209-MS** REV. **00**

SCALE: 1:5.5 CALC. WT. ACT. WT. SHEET 1 OF 1