

8

7

6

5

4

3

2

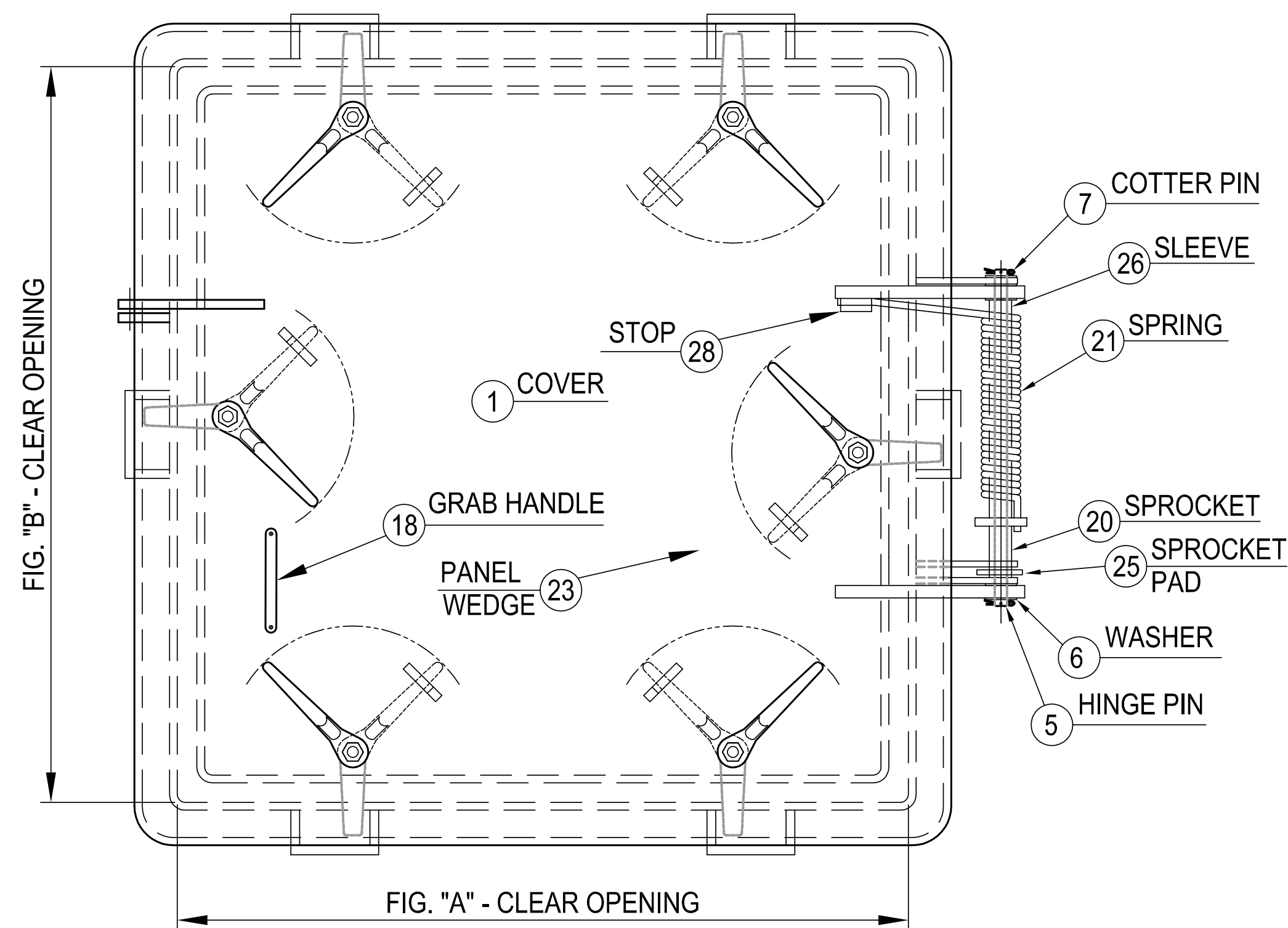
1

D

C

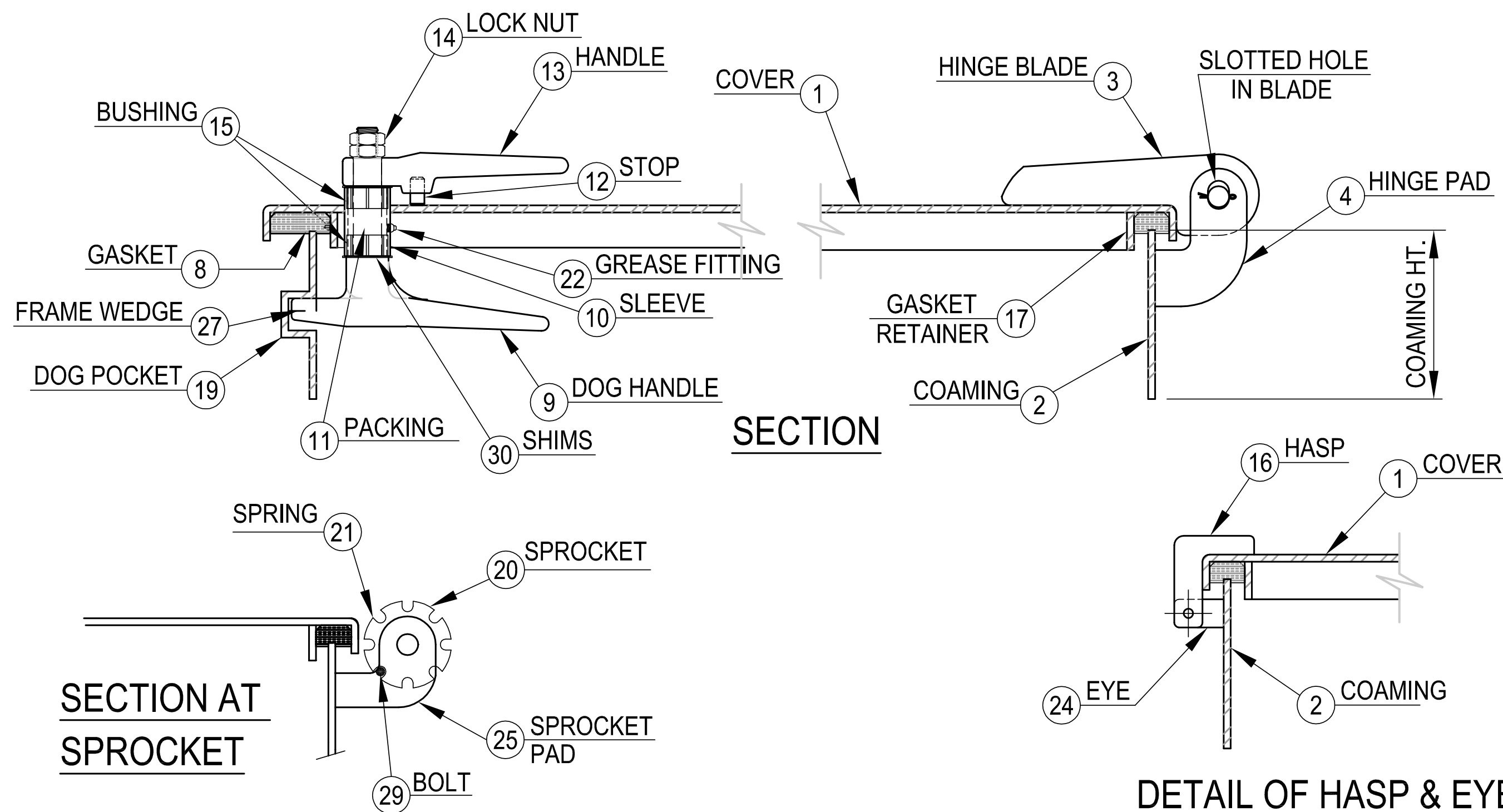
B

A



SCHEDULE OF MATERIALS

PC.	MATERIAL	REMARKS
1	MILD STEEL	
2	MILD STEEL	
3	MILD STEEL	
4	MILD STEEL	
5	COLD FINISH	
6	STAINLESS	
7	STAINLESS	
8	NEOPRENE	
9	FORGED STEEL	
10	MILD STEEL	
11	TEFLON	
12	MILD STEEL	
13	FORGED STEEL	
14	PLATED STEEL	
15	DELRIN	
16	MILD STEEL	
17	MILD STEEL	
18	MILD STEEL	
19	MILD STEEL	
20	MILD STEEL	
21	SRING STEEL	
22	PLATED STEEL	
23	MILD STEEL	
24	MILD STEEL	
25	MILD STEEL	
26	MILD STEEL	
27	FORGED STEEL	
28	MILD STEEL	
29	PLATED STEEL	
30	STAINLESS	



NOTES: UNLESS OTHERWISE SPECIFIED.

CUSTOMER APPROVAL

Signature: _____

Date: _____

IMPORTANT! THIS DRAWING SUPERSEDES ALL OTHER DOCUMENTS. By signing this approval you accept and agree that the dimensions and details shown are correct and properly fit your application, regardless of any differences between this drawing and any contract specifications. Should you see any errors in the drawing, or have any questions, please contact your Freeman Marine sales engineer for clarification.

REV.	DESCRIPTION	DATE	DRAWN
00	PRODUCTION RELEASE	2/27/20	ZC

SPECIFICATIONS SUBJECT TO CHANGE WITHOUT NOTICE.

PROJECTION

UNLESS OTHERWISE SPECIFIED DIMENSIONS ARE IN INCHES, TOLERANCES FOR ROUGH AND CLEAR OPENING ± .125 INCH. ALL OTHERS ARE:

.X	.XX	.XXX	ANGLES
±.1	±.03	±.010	±2°

DO NOT SCALE DRAWING

FREEMAN MARINE EQUIPMENT, INC.

28336 HUNTER CREEK ROAD
GOLD BEACH, OR 97444 U.S.A.
PHONE: 541-247-7078 FAX: 541-247-2114
www.freemanmarine.com

CONFIDENTIAL PROPERTY OF FREEMAN MARINE EQUIPMENT, INC. UNAUTHORIZED USE, REPRODUCTION OR DISTRIBUTION IS STRICTLY PROHIBITED. ALL COPIES REMAIN THE PROPERTY OF FREEMAN MARINE EQUIPMENT, INC. AND MUST BE RETURNED UPON REQUEST.

© ALL RIGHTS RESERVED 2012, FREEMAN MARINE EQUIPMENT, INC.

CLIENT: **FREEMAN MARINE**

TITLE: **WATERTIGHT SPRING ASSIST HATCH W/DOGS**

SIZE: **D** CAGE CODE: **64747** DRAWING NUMBER: **214-MS** REV. **00**

SCALE: 1:5.5 CALC. WT. ACT. WT. SHEET 1 OF 1