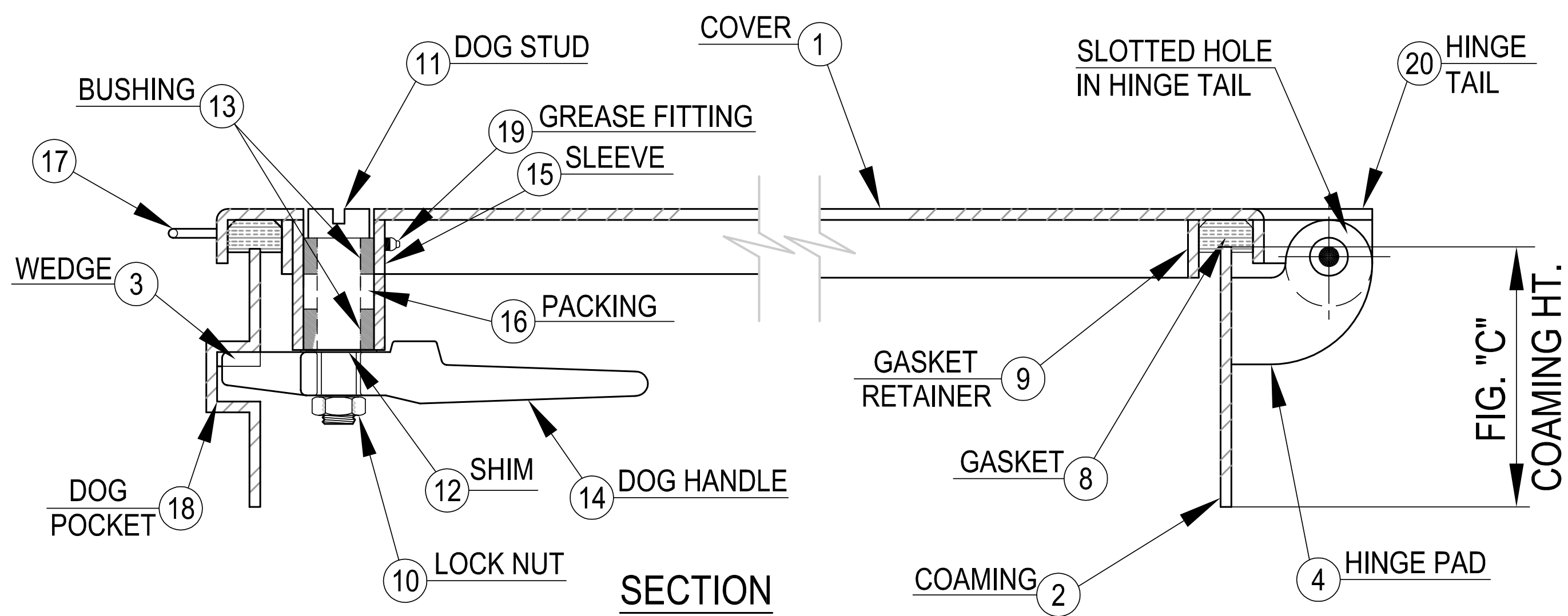


SCHEDULE OF MATERIALS

PC.	MATERIAL	REMARKS
1	MILD STEEL	
2	MILD STEEL	
3	FORGED STEEL	
4	MILD STEEL	
5	COLD FINISH	
6	STAINLESS	
7	STAINLESS	
8	NEOPRENE	
9	PLATED STEEL	
10	STEEL	
11	BRASS	
12	STAINLESS	
13	DELFIN	
14	MANGANESE BRONZE	
15	COLD FINISH	
16	TEFLON	
17	MILD STEEL	
18	MILD STEEL	
19	PLATED	
20	MILD STEEL	



D
C
B
A

NOTES: UNLESS OTHERWISE SPECIFIED.

CUSTOMER APPROVAL

Signature: _____
Date: _____

IMPORTANT! THIS DRAWING SUPERSEDES ALL OTHER DOCUMENTS. By signing this approval you accept and agree that the dimensions and details shown are correct and properly fit your application, regardless of any differences between this drawing and any contract specifications. Should you see any errors in the drawing, or have any questions, please contact your Freeman Marine sales engineer for clarification.

SPECIFICATIONS SUBJECT TO CHANGE WITHOUT NOTICE.	
PROJECTION	
UNLESS OTHERWISE SPECIFIED DIMENSIONS ARE IN INCHES, TOLERANCES FOR ROUGH AND CLEAR OPENING ± .125 INCH. ALL OTHERS ARE:	
.X	.XX .XXX ANGLES
±.1	±.03 ±.010 ±.2°
DO NOT SCALE DRAWING	
00 PRODUCTION RELEASE	2/27/20 ZC
REV. DESCRIPTION:	DATE: DRAWN

FREEMAN
MARINE EQUIPMENT, INC.

CONFIDENTIAL PROPERTY OF FREEMAN MARINE EQUIPMENT, INC. UNAUTHORIZED USE, REPRODUCTION OR DISTRIBUTION IS STRICTLY PROHIBITED. ALL COPIES REMAIN THE PROPERTY OF FREEMAN MARINE EQUIPMENT, INC. AND MUST BE RETURNED UPON REQUEST.

28336 HUNTER CREEK ROAD
GOLD BEACH, OR 97444 U.S.A.
PHONE: 541-247-7078 FAX: 541-247-2114
www.freemanmarine.com

CLIENT: **FREEMAN MARINE**

TITLE: **FLUSH COVER ON RAISED OVAL HATCH**

SIZE: **D** CAGE CODE: **64747** DRAWING NUMBER: **216-MS** REV. **00**

SCALE: 1:5.5 CALC. WT. ACT. WT. SHEET 1 OF 1