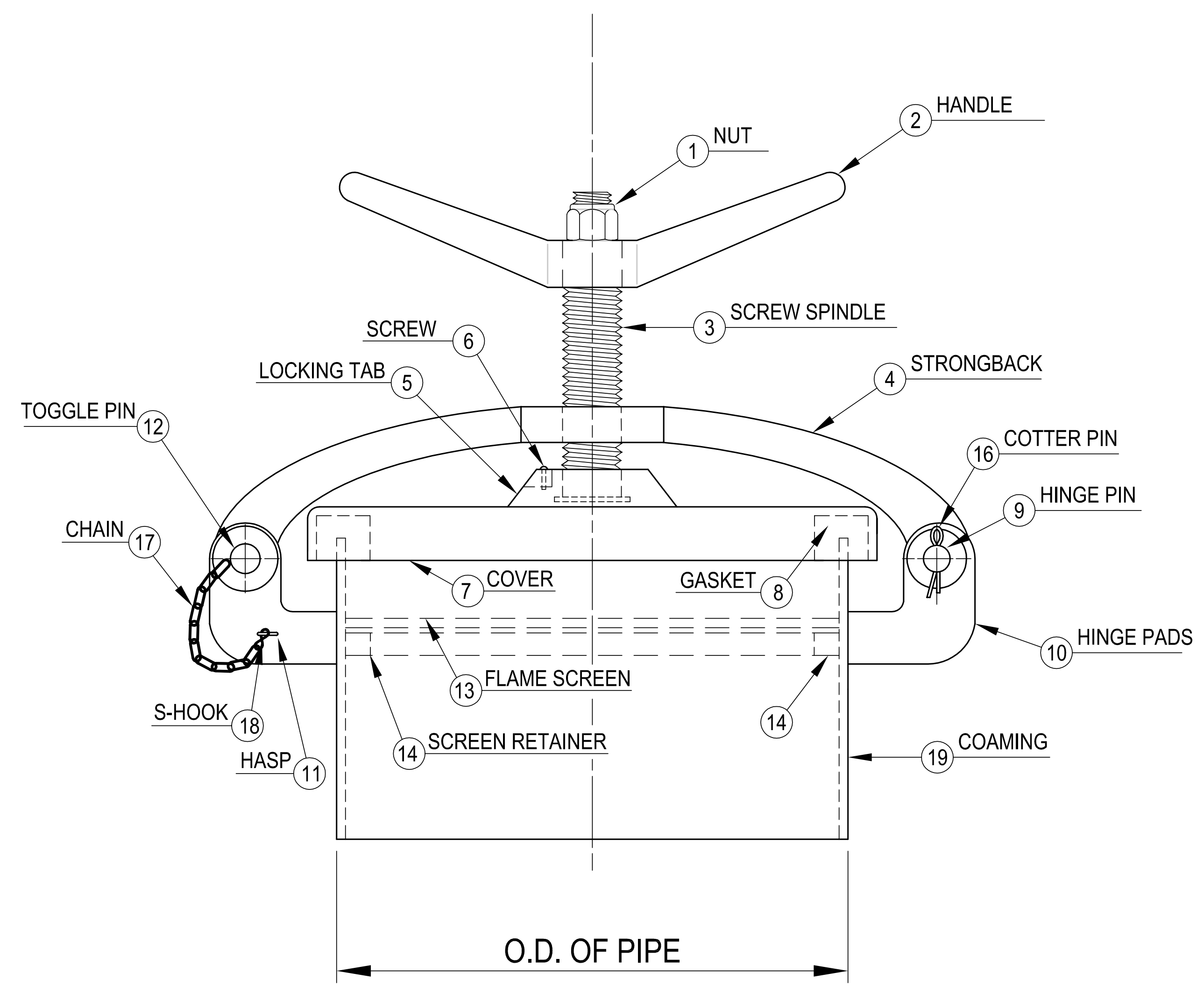
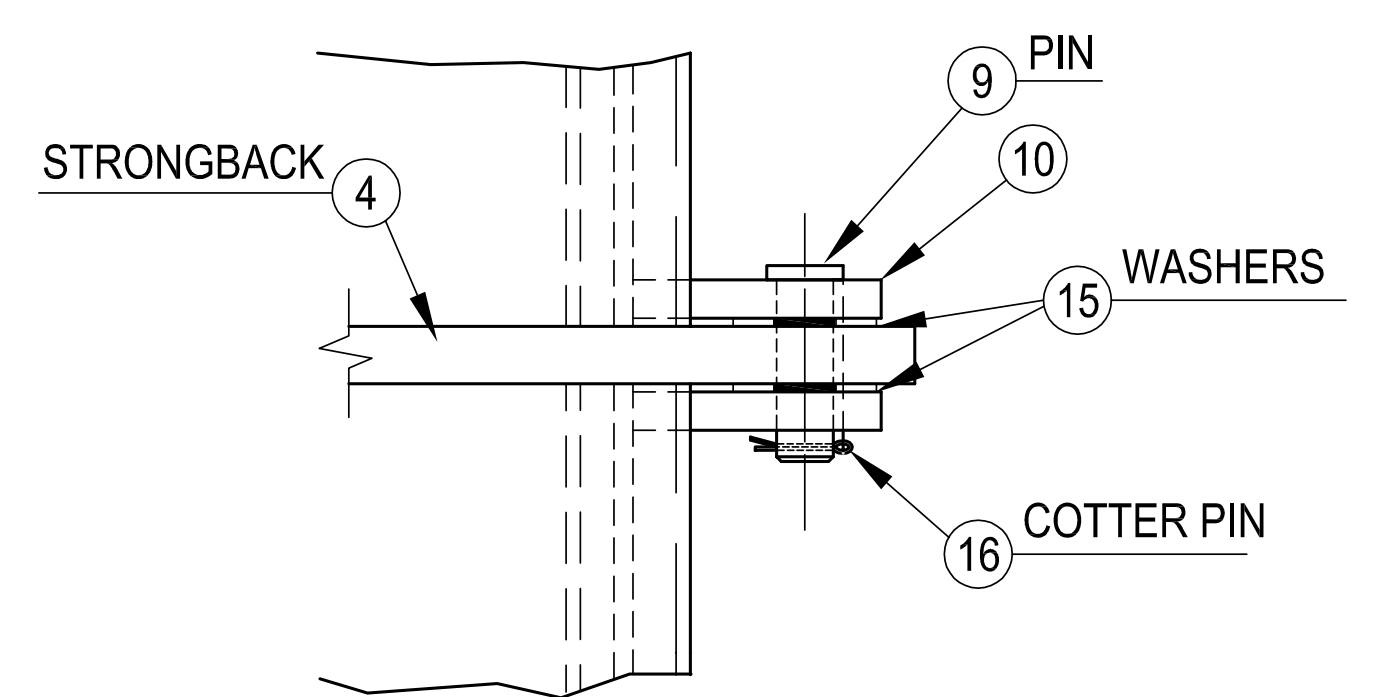


D  
C  
B  
A



**ELEVATION**



**DETAIL OF HINGE**

SCHEDULE OF MATERIALS		
PC.	MATERIAL	REMARKS
1	BRASS	
2	BRASS	
3	BRASS	
4	BRASS	
5	BRASS	
6	BRASS	
7	BRASS	
8	NEOPRENE	
9	BRASS	
10	MILD STEEL	
11	MILD STEEL	
12	BRASS	
13	BRASS	ST. STL. & STEEL WIRE
14	MILD STEEL	
15	BRASS	
16	STAINLESS	
17	BRASS	
18	BRASS	
19	STEEL	

NOTES: UNLESS OTHERWISE SPECIFIED.

**CUSTOMER APPROVAL**  
 Signature: \_\_\_\_\_  
 Date: \_\_\_\_\_  
 IMPORTANT! THIS DRAWING SUPERSEDES ALL OTHER DOCUMENTS. By signing this approval you accept and agree that the dimensions and details shown are correct and properly fit your application, regardless of any differences between this drawing and any contract specifications. Should you see any errors in the drawing, or have any questions, please contact your Freeman Marine sales engineer for clarification.

SPECIFICATIONS SUBJECT TO CHANGE WITHOUT NOTICE.	
UNLESS OTHERWISE SPECIFIED DIMENSIONS ARE IN INCHES, TOLERANCES FOR ROUGH AND CLEAR OPENING ± .125 INCH. ALL OTHERS ARE:	
.X	.XX .XXX ANGLES
±.1	±.03 ±.010 ±2°
DO NOT SCALE DRAWING	
00	PRODUCTION RELEASE
REV.	DESCRIPTION
DATE:	DRAWN

**FREEMAN MARINE EQUIPMENT, INC.**  
 28336 HUNTER CREEK ROAD  
 GOLD BEACH, OR 97444 U.S.A.  
 PHONE: 541-247-7078 FAX: 541-247-2114  
 www.freemanmarine.com

CONFIDENTIAL PROPERTY OF FREEMAN MARINE EQUIPMENT, INC. UNAUTHORIZED USE, REPRODUCTION OR DISTRIBUTION IS STRICTLY PROHIBITED. ALL COPIES REMAIN THE PROPERTY OF FREEMAN MARINE EQUIPMENT, INC. AND MUST BE RETURNED UPON REQUEST.

CLIENT: **FREEMAN MARINE**

TITLE: **ULLAGE HATCH**

SIZE: **D** CAGE CODE: **64747** DRAWING NUMBER: **220-MS** REV. **00**

SCALE: 1:5.5 CALC. WT. ACT. WT. SHEET 1 OF 1