

Freeman Marine Hatches, Model 3440 FREEMAN MARINE Commercial Duty, Quick-Acting fabricated hatches feature patented chain-drive, single actuation dogging, a rugged knife-edge seal and robust gasket to provide a Commercial watertight seal** when properly adjusted and dogged closed.

Rugged construction featuring aluminum panel skins (.160" up to .250"), internal reinforcements, choice of welded or bonded exterior skin and a screw-fastened interior skin, the 3440-series hatch provides the reliable service expected in a technical and machinery space Quick-Acting hatch.

Standard commercial and machinery space hatches often feature a sanded bare metal finish that creates a durable, uniform texture. When quality painted to your color specifications by Freeman, the 3440-series hatch makes a handsome, rugged portal that will stand up to continuous use by crew.

For military-security applications, R/F – EMI suppression, ballistics resistance and low radar reflective signature performance can be specified.

Solidly constructed, fully insulated and moderately priced, FREEMAN Commercial Aluminum Panel Quick-Acting hatches are suitable for commercial, military and crew or machinery space yacht applications.

3440 Lift Out, Teak Overlay-Raised Bi-Square, Steel Coaming



3440 Surface hinges and Bi-Square Raised for Teak Overlay. Aluminum Coaming.

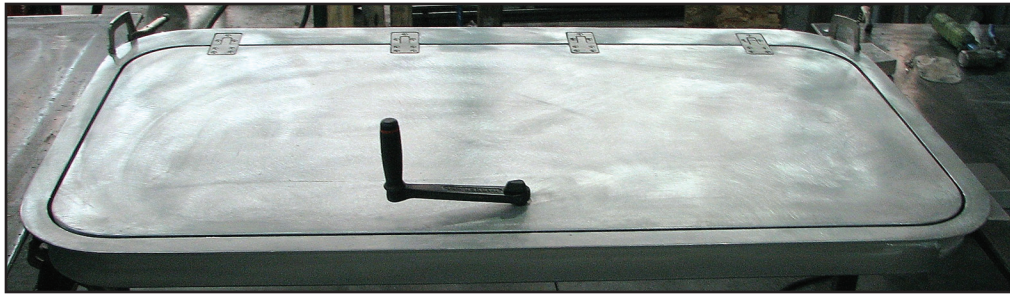


3440 Gas Springs, Panel-Coaming Mounted

COMMERCIAL PANEL HATCH, QUICK-ACTING DESIGN FEATURES

- .160" ~.250" Thick Aluminum Panel Skins
- Welded Frame and Welded (or Bonded) Exterior Skin Construction
- Interior Skin Attached with Screws
- Knife-edge Sealing Method
- Wide Gasket for Aggressive, Tight Sealing
- Flush with Deck or Raised Coamings
- Bolt-in and Weld-in Coamings
- Coamings of Aluminum, Mild Steel or Stainless Steel
- Surface or Concealed Hinges
- Custom Shaped and Sized to Client Specification
- Camber and Sheer to match decks (avail)
- Gas Spring Assist for Easy Lift and Closure
- Custom Drain Locations
- Teak Overlay Prep (avail)
- Internal Panel Stiffeners
- Sanded Finish (standard); Bristol Finish Paint (available)
- External Bi-square Opening (avail)
- Cast Dogs with Roller Bearing Cam Followers
- Glass Filled Striker Wedges
- Solid Insulation
- Stainless Steel Fasteners

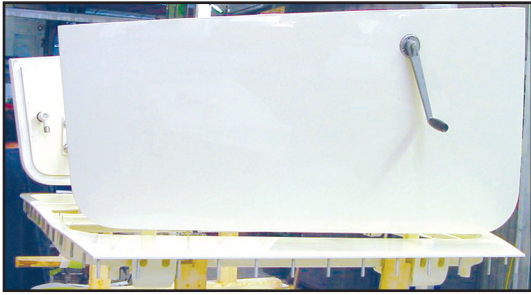
** Degree of watertightness depends on number of dogs, size, panel specifications, proper installation and sealing adjustment. Watertight hatches are individually defined, specified and fabricated for each application.



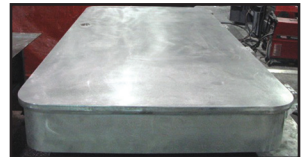
3440 Recessed Surface Hinges



3440 Gas Springs-Gutter Mounted



3440 (2x with removable mullion), Cambered, Exterior, Open



3440 Raised Coaming



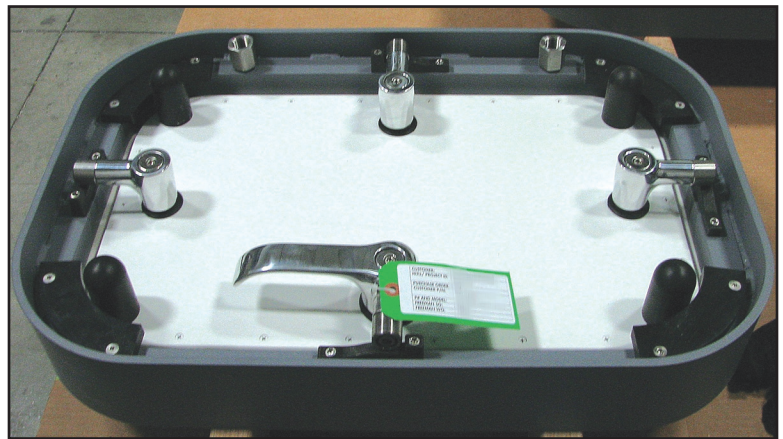
3440 (2x with removable mullion), Cambered



3440 with Surface Hinges



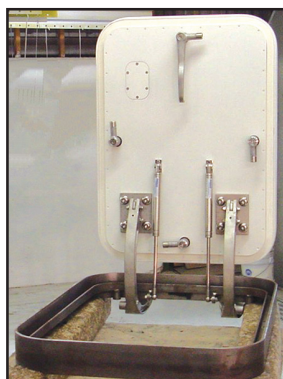
3440 (2x with removable mullion), Cambered, Closed



3440 Lift Out, Steel Coaming



3440 Steel Coaming, Shape



3440 with Surface Hinges