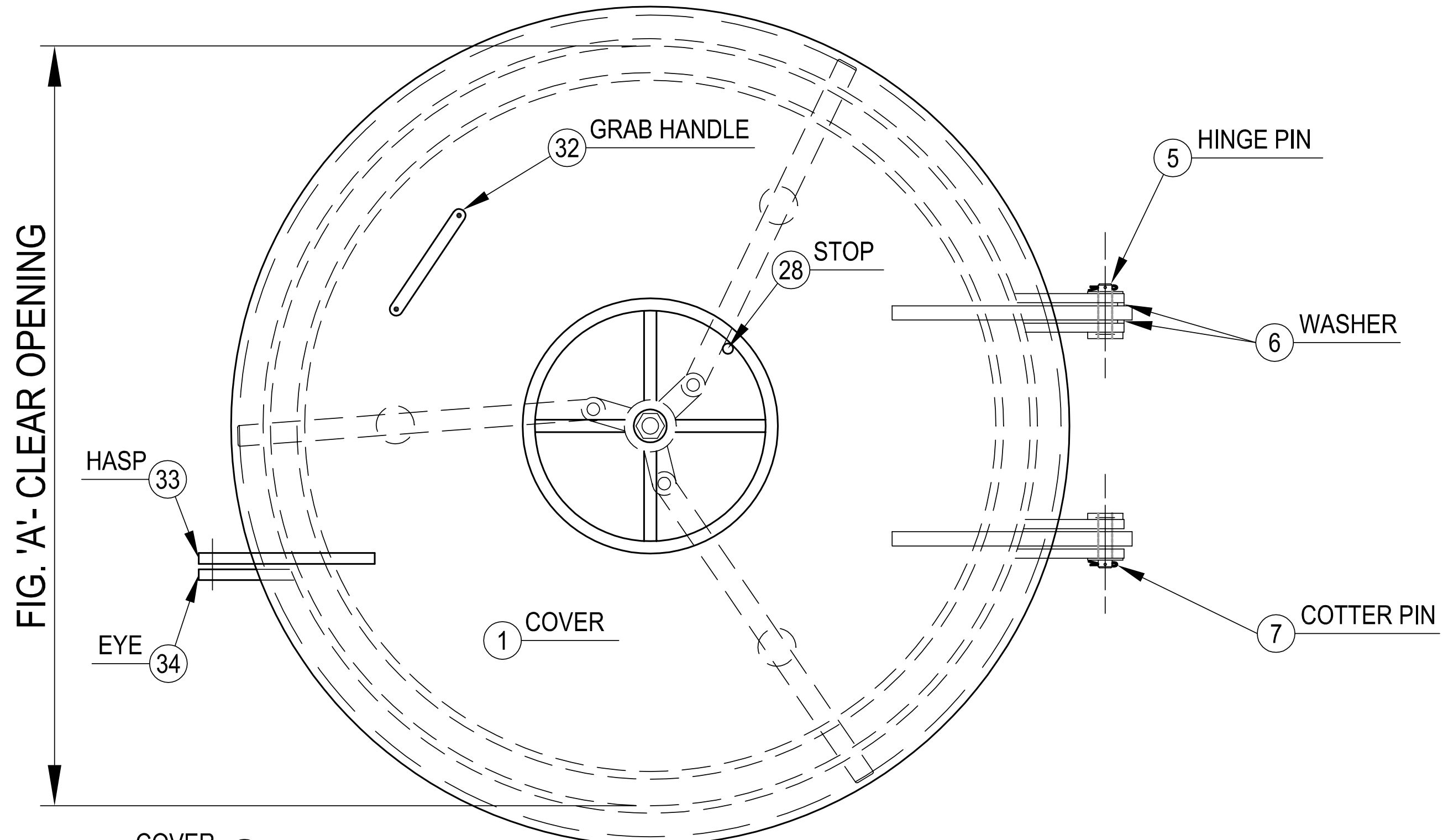
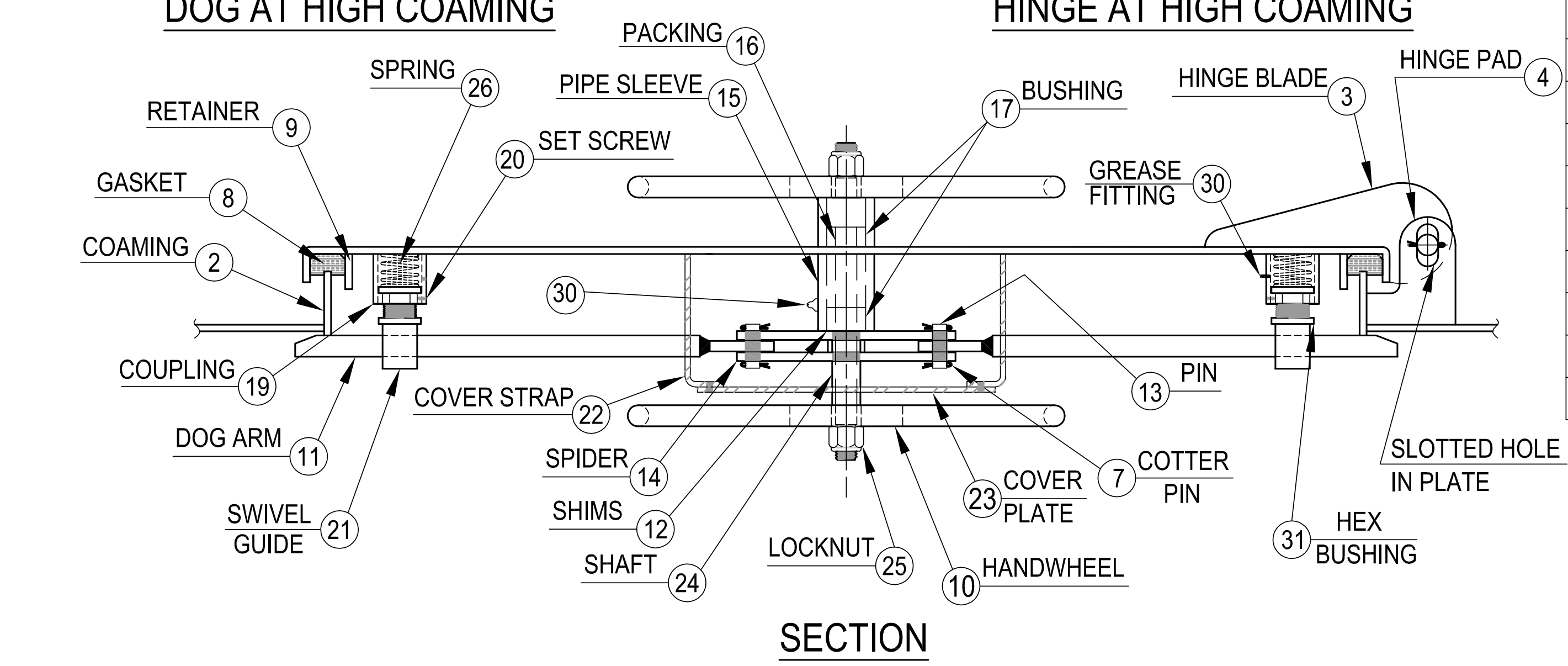
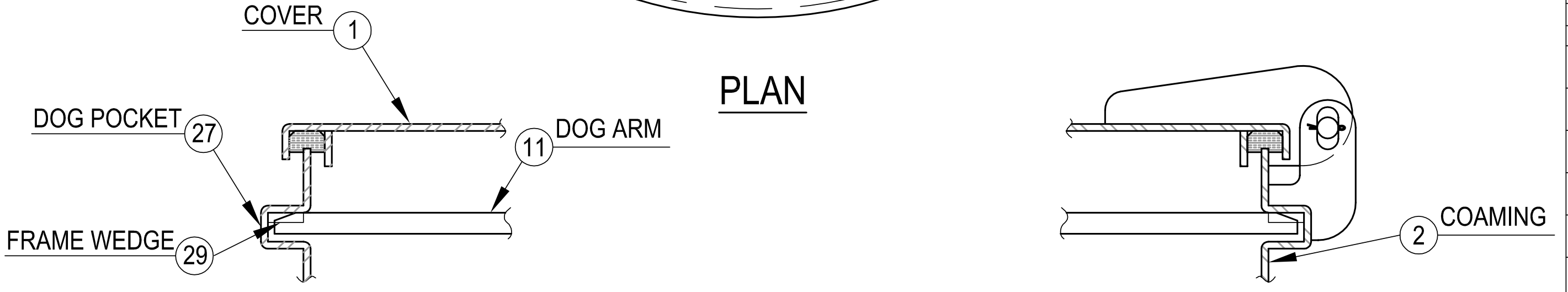


D
C
B
A



SCHEDULE OF MATERIALS

PC.	MATERIAL	REMARKS
1	MILD STEEL	
2	MILD STEEL	
3	MILD STEEL	
4	MILD STEEL	
5	BRASS	
6	STAINLESS	
7	STAINLESS	
8	NEOPRENE	
9	MILD STEEL	
10	MILD STEEL	
11	MILD STEEL	
12	STAINLESS	
13	BRASS	
14	MILD STEEL	
15	MILD STEEL	
16	TEFLON	
17	DELTRIN	
19	MILD STEEL	
20	MILD STEEL	
21	BRASS	
22	MILD STEEL	
23	MILD STEEL	
24	COLD FINISH	
25	PLATED STEEL	
26	STEEL	
27	MILD STEEL	
28	MILD STEEL	
29	MILD STEEL	
30	PLATED STEEL	
31	BRASS	
32	MILD STEEL	
33	MILD STEEL	
34	MILD STEEL	



NOTES: UNLESS OTHERWISE SPECIFIED.

CUSTOMER APPROVAL
Signature: _____
Date: _____
IMPORTANT! THIS DRAWING SUPERSEDES ALL OTHER DOCUMENTS. By signing this approval you accept and agree that the dimensions and details shown are correct and properly fit your application, regardless of any differences between this drawing and any contract specifications. Should you see any errors in the drawing, or have any questions, please contact your Freeman Marine sales engineer for clarification.

REV.	DESCRIPTION	DATE	DRAWN
00	PRODUCTION RELEASE	2/27/20	ZC

UNLESS OTHERWISE SPECIFIED DIMENSIONS ARE IN INCHES. TOLERANCES FOR ROUGH AND CLEAR OPENING ± .125 INCH. ALL OTHERS ARE:
.X .XX .XXX ANGLES
±.1 ±.03 ±.010 ±2°
DO NOT SCALE DRAWING

FREEMAN
MARINE EQUIPMENT, INC.

28336 HUNTER CREEK ROAD
GOLD BEACH, OR 97444 U.S.A.
PHONE: 541-247-7078 FAX: 541-247-2114
www.freemanmarine.com

CONFIDENTIAL PROPERTY OF FREEMAN MARINE EQUIPMENT, INC. UNAUTHORIZED USE, REPRODUCTION OR DISTRIBUTION IS STRICTLY PROHIBITED. ALL COPIES REMAIN THE PROPERTY OF FREEMAN MARINE EQUIPMENT, INC. AND MUST BE RETURNED UPON REQUEST.
© ALL RIGHTS RESERVED 2012, FREEMAN MARINE EQUIPMENT, INC.

DRAWN: ZC		DATE: 2/27/20	
CHECKED:		DATE:	
ENGR:		DATE:	
DESIGN ACTIVITY:		DATE:	
CONTRACT NO.:			

CLIENT: FREEMAN MARINE
TITLE: RAISED QUICK ACTING WATERTIGHT ROUND SCUTTLE

SIZE: D	CAGE CODE: 64747	DRAWING NUMBER: 402-MS	REV. 00
SCALE: 1:5	CALC. WT.	ACT. WT.	SHEET 1 OF 1