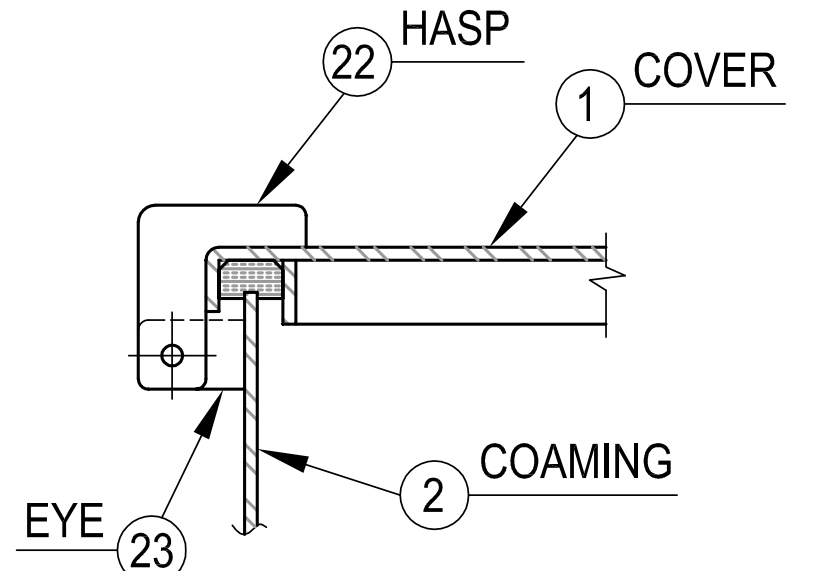
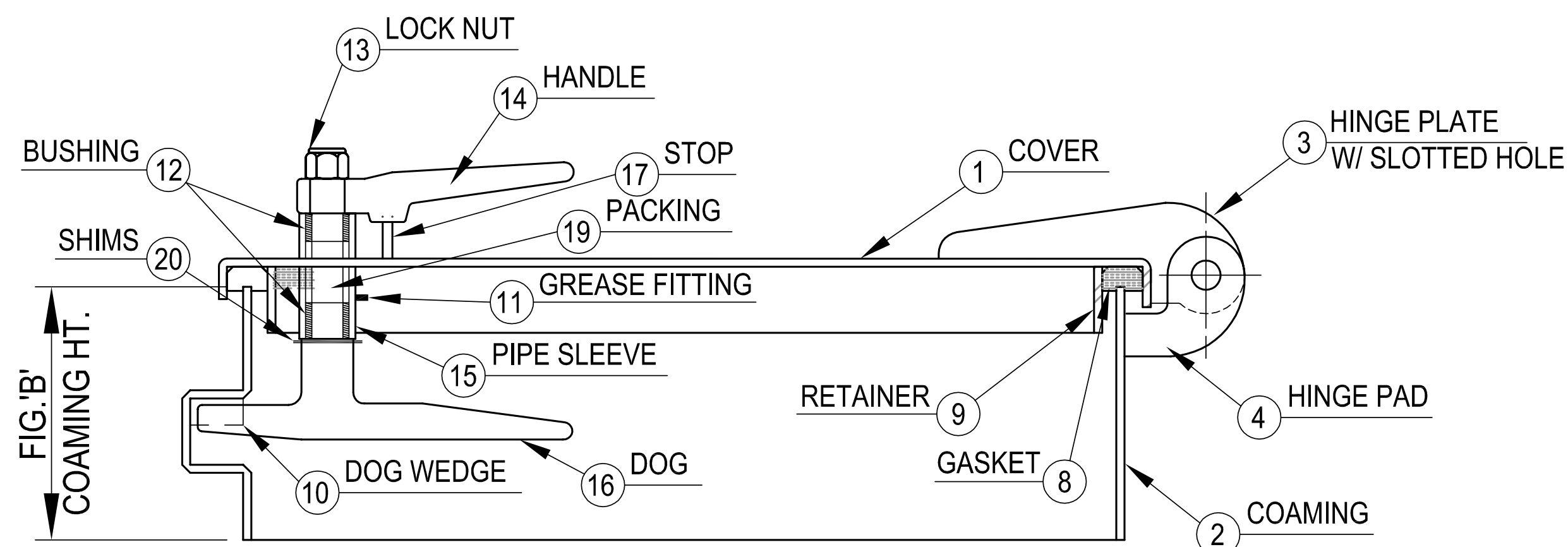


PLAN



DETAIL OF HASP & EYE



SECTION

SCHEDULE OF MATERIALS		
PC.	MATERIAL	REMARKS
1	MILD STEEL	
2	MILD STEEL	
3	MILD STEEL	
4	MILD STEEL	
5	BRASS	
6	STAINLESS	
7	STAINLESS	
8	NEOPRENE	
9	MILD STEEL	
10	FORGED STEEL	
11	PLATED STEEL	
12	DELRIN	
13	PLATED STEEL	
14	FORGED STEEL	
15	MILD STEEL	
16	FORGED STEEL	
17	MILD STEEL	
18	MILD STEEL	
19	TEFLON	
20	STAINLESS	
21	MILD STEEL	
22	MILD STEEL	
23	MILD STEEL	

D

C

B

A

NOTES: UNLESS OTHERWISE SPECIFIED.

CUSTOMER APPROVAL

Signature: _____
 Date: _____
 IMPORTANT! THIS DRAWING SUPERSEDES ALL OTHER DOCUMENTS. By signing this approval you accept and agree that the dimensions and details shown are correct and properly fit your application, regardless of any differences between this drawing and any contract specifications. Should you see any errors in the drawing, or have any questions, please contact your Freeman Marine sales engineer for clarification.

SPECIFICATIONS SUBJECT TO CHANGE WITHOUT NOTICE.	
PROJECTION	
UNLESS OTHERWISE SPECIFIED DIMENSIONS ARE IN INCHES. TOLERANCES FOR ROUGH AND CLEAR OPENING ± .125 INCH. ALL OTHERS ARE: .X .XX .XXX ANGLES ±.1 ±.03 ±.010 ±2°	
DO NOT SCALE DRAWING	
00 PRODUCTION RELEASE	2/27/20 ZC
REV. DESCRIPTION:	DATE: DRAWN

FREEMAN MARINE EQUIPMENT, INC.
 28336 HUNTER CREEK ROAD
 GOLD BEACH, OR 97444 U.S.A.
 PHONE: 541-247-7078 FAX: 541-247-2114
 www.freemanmarine.com

CONFIDENTIAL PROPERTY OF FREEMAN MARINE EQUIPMENT, INC. UNAUTHORIZED USE, REPRODUCTION OR DISTRIBUTION IS STRICTLY PROHIBITED. ALL COPIES REMAIN THE PROPERTY OF FREEMAN MARINE EQUIPMENT, INC. AND MUST BE RETURNED UPON REQUEST.

CLIENT: **FREEMAN MARINE**

TITLE: **WATERTIGHT SCUTTLE WITH DOGS**

SIZE: **D** CAGE CODE: **64747** DRAWING NUMBER: **405-MS** REV. **00**

SCALE: 1:5.5 CALC. WT. ACT. WT. SHEET 1 OF 1