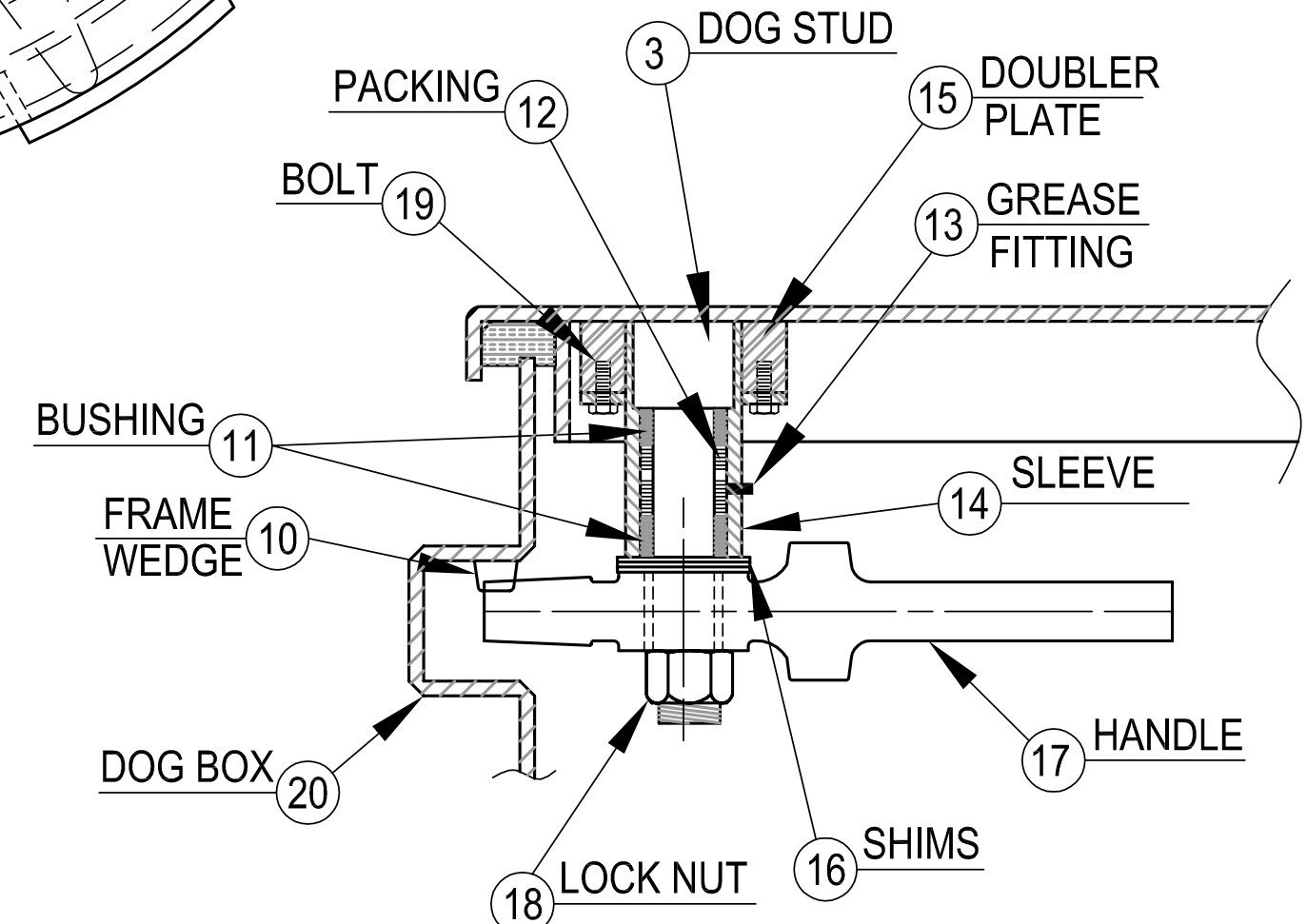
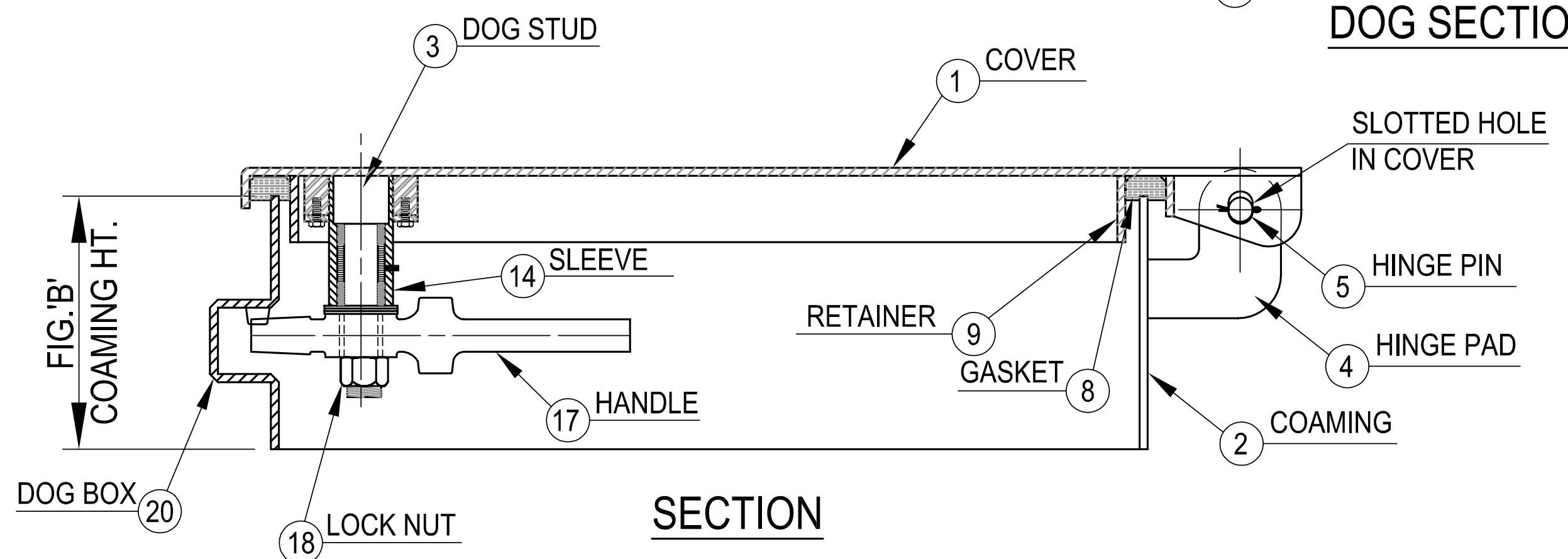


PLAN



DOG SECTION



SECTION

SCHEDULE OF MATERIALS		
PC.	MATERIAL	REMARKS
1	MILD STEEL	
2	MILD STEEL	
3	BRASS	
4	MILD STEEL	
5	COLD FINISH	
6	STAINLESS	
7	STAINLESS	
8	NEOPRENE	
9	MILD STEEL	
10	MILD STEEL	
11	DELFIN	
12	TEFLON	
13	PLATED STEEL	
14	MILD STEEL	
15	MILD STEEL	
16	STAINLESS	
17	BRASS	
18	PLATED STEEL	
19	PLATED STEEL	
20	MILD STEEL	

D
C
B
A

NOTES: UNLESS OTHERWISE SPECIFIED.

CUSTOMER APPROVAL
Signature: _____
Date: _____
IMPORTANT! THIS DRAWING SUPERSEDES ALL OTHER DOCUMENTS. By signing this approval you accept and agree that the dimensions and details shown are correct and properly fit your application, regardless of any differences between this drawing and any contract specifications. Should you see any errors in the drawing, or have any questions, please contact your Freeman Marine sales engineer for clarification.

SPECIFICATIONS SUBJECT TO CHANGE WITHOUT NOTICE.	
PROJECTION	
UNLESS OTHERWISE SPECIFIED DIMENSIONS ARE IN INCHES. TOLERANCES FOR ROUGH AND CLEAR OPENING ± .125 INCH. ALL OTHERS ARE: .X .XX .XXX ANGLES ±.1 ±.03 ±.010 ±2°	
00 PRODUCTION RELEASE	2/27/20 ZC
REV. DESCRIPTION:	DATE: DRAWN

FREEMAN MARINE EQUIPMENT, INC.
28336 HUNTER CREEK ROAD
GOLD BEACH, OR 97444 U.S.A.
PHONE: 541-247-7078 FAX: 541-247-2114
www.freemanmarine.com

CONFIDENTIAL PROPERTY OF FREEMAN MARINE EQUIPMENT, INC. UNAUTHORIZED USE, REPRODUCTION OR DISTRIBUTION IS STRICTLY PROHIBITED. ALL COPIES REMAIN THE PROPERTY OF FREEMAN MARINE EQUIPMENT, INC. AND MUST BE RETURNED UPON REQUEST.

CLIENT: **FREEMAN MARINE**

TITLE: **WATERTIGHT SCUTTLE OPERATE BELOW ONLY**

SIZE: **D** CAGE CODE: **64747** DRAWING NUMBER: **406-MS** REV. **00**

SCALE: 1:5.5 CALC. WT. ACT. WT. SHEET 1 OF 1