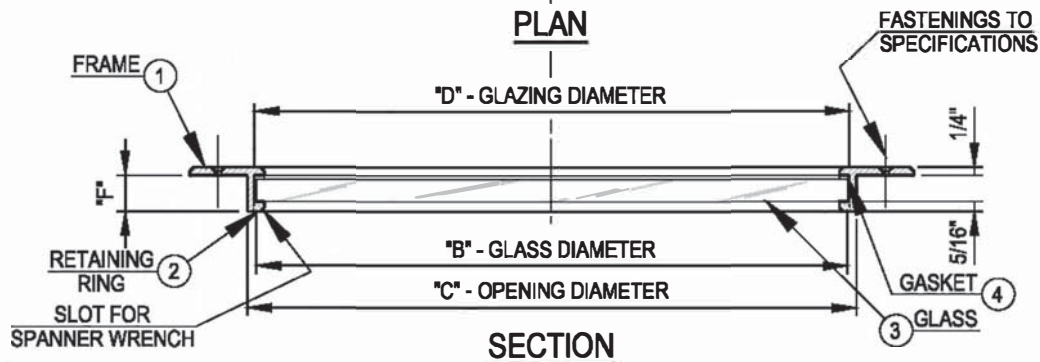
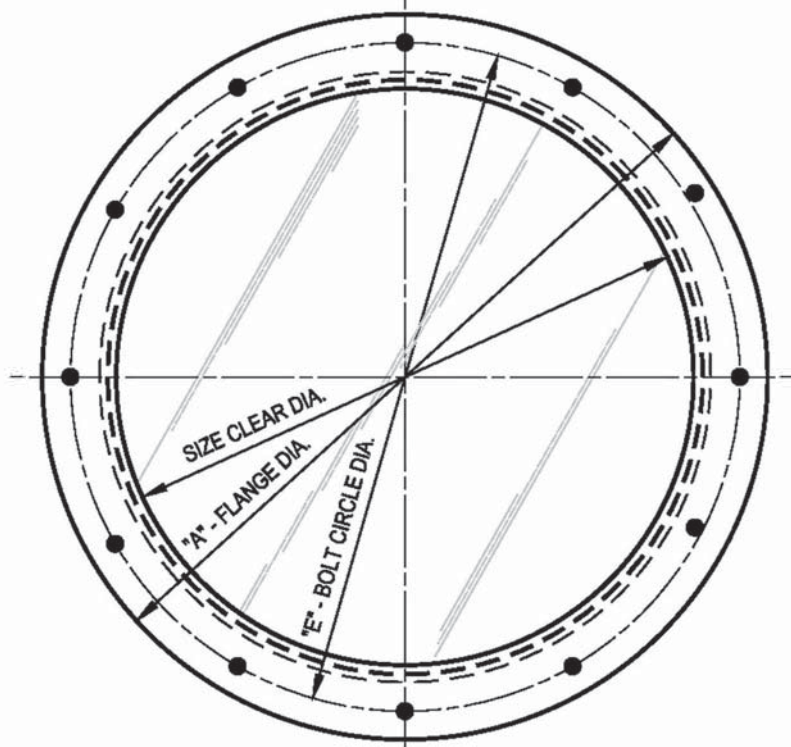


## DIMENSION SCHEDULE

SIZE:		4	6	7	8	10	12	14	16	18
DIMENSIONS:	A	6 5/8	8 1/2	9 3/4	11	13 1/4	15 1/4	18 1/4	20 5/8	22 5/8
	B	4 3/8x3/8	6 3/8x1/2	7 3/8x3/4	8 1/2x3/4	10 1/2x3/4	12 1/2x3/4	14 1/2x3/4	16 1/2x3/4	18 1/2x3/4
	C	4 13/16	6.800	7 13/16	9 1/16	11 1/16	13 1/16	15 1/16	17 1/16	19 1/16
	D	4 1/2	6 1/2	7 1/2	8 5/8	10 5/8	12 5/8	14 5/8	16 5/8	18 5/8
	E	5 7/8	7 1/2	8 7/8	10 3/8	12 1/4	14 1/4	17	18 7/8	20 7/8
	F	1	1	1	1 1/8	1 1/8	1 1/8	1 3/16	1 3/16	1 3/16
HOLES:		6	6	6	8	8	12	12	12	12
DRILLED FOR:		1/4" F.H.	1/4" F.H.	1/4" F.H.	1/4" F.H.	1/4" F.H.	1/4" F.H.	1/4" F.H.	1/4" F.H.	1/4" F.H.

## SCHEDULE OF MATERIALS

PC.	MATERIAL	REMARKS
1	ALUMINUM	
2	ALUMINUM	
3	GLASS	
4	NEOPRENE	



*Freeman Marine Equipment*

Gold Beach Oregon USA

ALUMINUM PLAIN FIXED LIGHT

DWG. NO.: 500-A