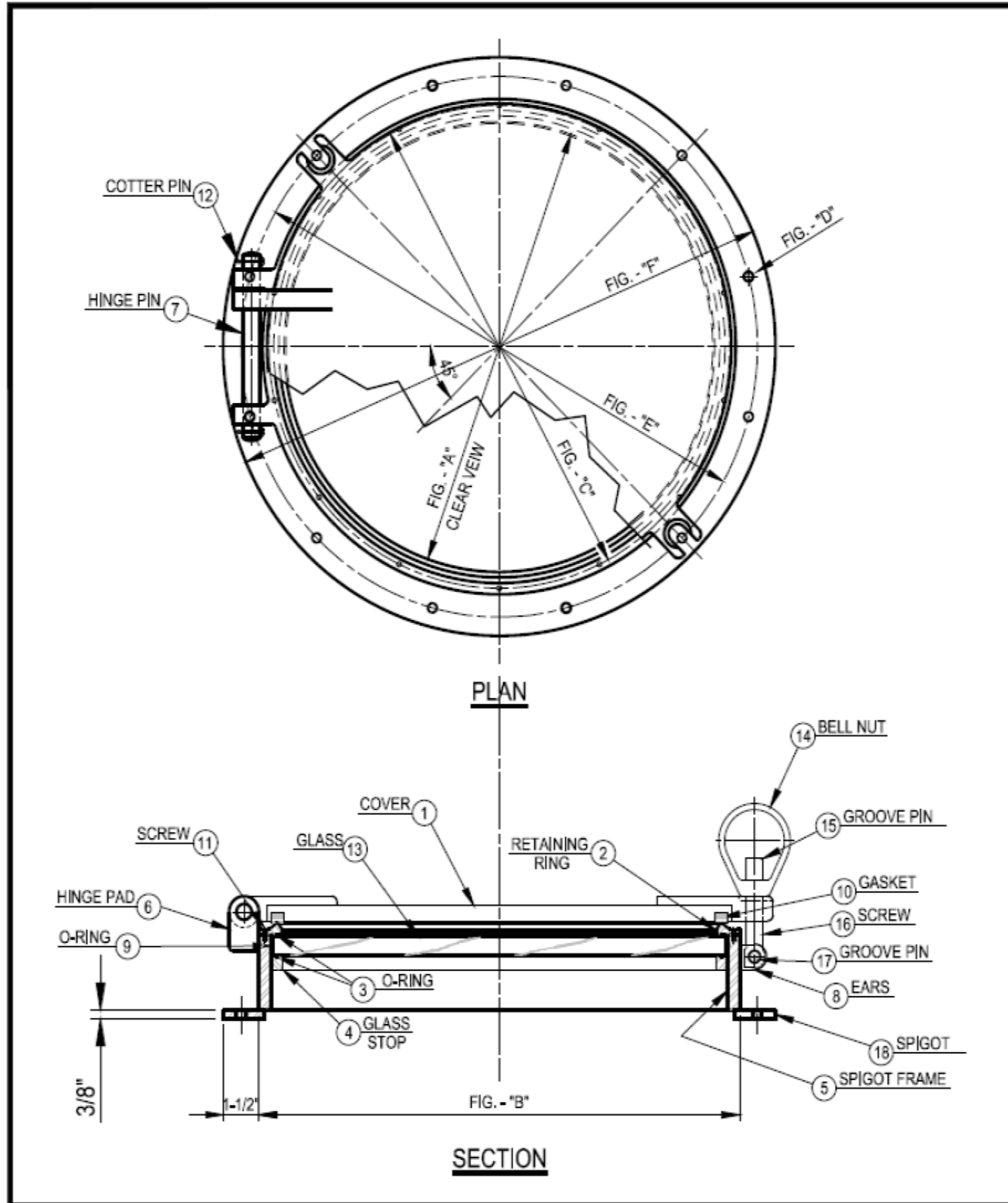


D

C

B

A



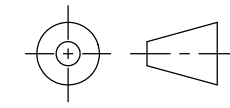
SCHEDULE OF MATERIALS		
PC.	MATERIAL	REMARKS
1	MILD STEEL	1/2" THK.
2	BRASS	
3	NEOPRENE	3/16"Ø
4	MILD STEEL	
5	MILD STEEL	1/2" x 3"
6	MILD STEEL	
7	BRASS	
8	MILD STEEL	
9	NEOPRENE	1/4"Ø
10	NEOPRENE	
11	STAINLESS	10-32x3/4" LONG
12	STAINLESS	
13	GLASS	3/4" THK. TEMPERED
14	BRONZE	
15	STAINLESS	
16	BRONZE	
17	STAINLESS	
18	MILD STEEL	3/8" THK.

DIMENSION SCHEDULE					
SIZE:	10	12	14	16	18
A	10	12	14	16	18
B	12	14	16	18	20
C	11 7/16	13 7/16	15 7/16	17 7/16	19 7/16
D	33/64"	33/64"	33/64"	33/64"	33/64"
E	13 1/2"	15 1/2"	17 1/2"	19 1/2"	21 1/2"
F	15"	17"	19"	21"	23"
# OF HOLES:	10	12	12	12	12

NOTES: UNLESS OTHERWISE SPECIFIED.

CUSTOMER APPROVAL
 Signature: _____
 Date: _____
 IMPORTANT! THIS DRAWING SUPERSEDES ALL OTHER DOCUMENTS. By signing this approval you accept and agree that the dimensions and details shown are correct and properly fit your application, regardless of any differences between this drawing and any contract specifications. Should you see any errors in the drawing, or have any questions, please contact your Freeman Marine sales engineer for clarification.

00	PRODUCTION RELEASE	2/27/20	ZC
REV.	DESCRIPTION:	DATE:	DRAWN

SPECIFICATIONS SUBJECT TO CHANGE WITHOUT NOTICE.
 PROJECTION 
 UNLESS OTHERWISE SPECIFIED DIMENSIONS ARE IN INCHES, TOLERANCES FOR ROUGH AND CLEAR OPENING ± .125 INCH. ALL OTHERS ARE:
 .X .XX .XXX ANGLES
 ±.1 ±.03 ±.010 ±.2°
 DO NOT SCALE DRAWING

FREEMAN MARINE EQUIPMENT, INC.
 28336 HUNTER CREEK ROAD
 GOLD BEACH, OR 97444 U.S.A.
 PHONE: 541-247-7078 FAX: 541-247-2114
 www.freemanmarine.com

CONFIDENTIAL PROPERTY OF FREEMAN MARINE EQUIPMENT, INC. UNAUTHORIZED USE, REPRODUCTION OR DISTRIBUTION IS STRICTLY PROHIBITED. ALL COPIES REMAIN THE PROPERTY OF FREEMAN MARINE EQUIPMENT, INC. AND MUST BE RETURNED UPON REQUEST.
 © ALL RIGHTS RESERVED 2012, FREEMAN MARINE EQUIPMENT, INC.

CLIENT: **FREEMAN MARINE**
 TITLE: **STEEL BOLT-ON FIXEDLIGHT**

SCALE: 1:5.5
 CALC. WT. _____
 ACT. WT. _____

SIZE: **D** CAGE CODE: **64747** DRAWING NUMBER: **601-MS** REV. **00**
 SHEET 1 OF 1