

FREEMAN MARINE custom fabricated Heavy Duty – Aluminum Panel Hatches offer a wide range of options to meet virtually any specification. A rugged knife-edge seal and robust gasket provide a commercial watertight seal\*\* when properly adjusted and dogged closed.

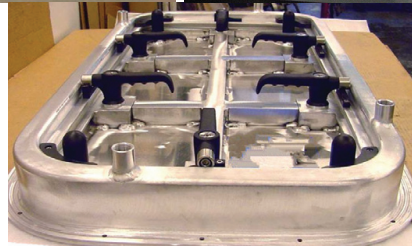
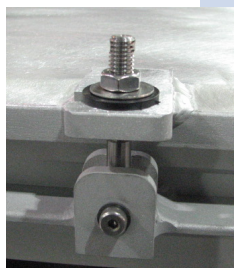
Rugged construction featuring thick panel skins (.160" up to .250"), internal reinforcements, welded exterior skin and screw fastened interior skin\* assure the reliable service expected in a technical and machinery space individually dogged hatch.

- \* Hatches may be ordered with flush or proud - raised coamings.
- \* Camber and sheer requirements to match deck profiles are routinely crafted.
- \* Hatches can be specified with either surface or concealed hinges.

Standard commercial and machinery space hatches often feature a sanded bare metal finish that creates a durable, uniform texture. When quality painted to your color specifications, the 3140-series hatch makes a rugged portal that will stand up to continuous use by crew.

For military-security applications, R/F – EMI suppression, ballistics resistance and low radar reflective signature performance can be specified.

\*To reduce weight, inside skin may be optionally deleted at time of order



**HEAVY DUTY PANEL  
HATCH DESIGN FEATURES**

- .160"~.250" Thick Aluminum Panel Skins
- Welded Frame and Exterior Skin Construction
- Interior Skin Attached with Screws
- Knife-edge Sealing Method
- Wide Gasket for Aggressive, Tight Sealing
- Custom Shaped and Sized to Client Specifications
- Camber and Sheer to Match Decks (avail)
- Flush with Deck or Raised Coamings
- Bolt-in and Weld-in Coamings
- Cast, Precision Machined Handles, wide selection of styles
- Surface or Concealed Hinges
- Gas Spring Assist for Easy Lift and Closure
- Custom Drain Locations
- Internal Panel Stiffeners
- External Bi-square Opening (avail)
- Stainless Steel Shafts and Fasteners
- Cast Dogs with Roller Bearing Cam Followers
- Solid Insulation

\*\* Degree of watertightness depends on number of dogs, size, panel specifications, proper installation and sealing adjustment. Watertight hatches are individually defined, specified and fabricated for each application.

[www.advantecglobal.com](http://www.advantecglobal.com)

ISO 9001:2008



**PROUDLY MADE IN  
NORTH AMERICA**

28336 Hunter Creek Rd., Gold Beach, Oregon 97444 USA  
1.800.770.0455 • [www.advantecglobal.com](http://www.advantecglobal.com)