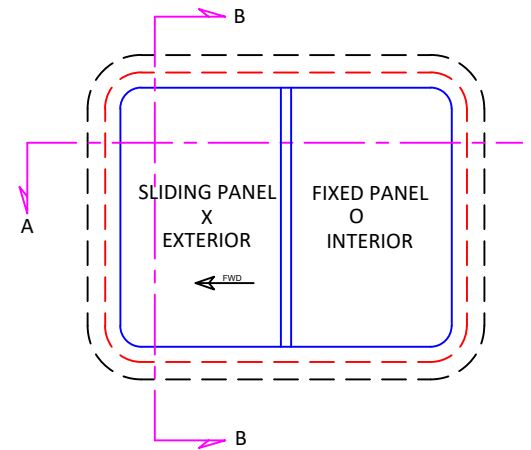


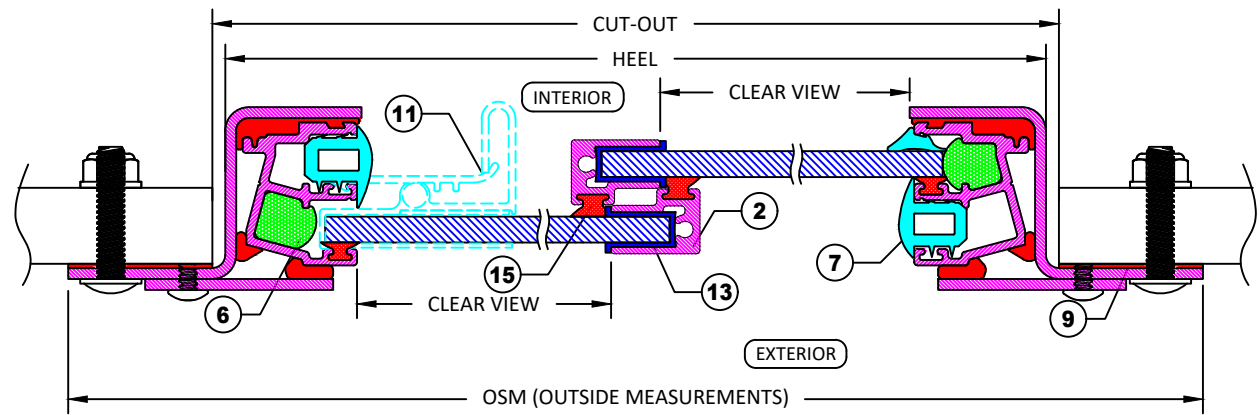
SECTION B-B WITH CLAMP IN INSTALLATION

ITEMS			
ID	DESCRIPTION	MATERIAL	PART NUMBER
1	MODIFIED D15	6063 ALUMINUM	103851
2	T-BAR	6063 ALUMINUM	103814
3	"O" TRACK	RIDGID PVC	103041
4	D15 TRACK	RIDGID PVC	103043
5	GLAZING	GLASS 6mm (1/4")	VARIES
6	BACKER ROD	FOAM	103001
7	PLUG/STOP	FLEXIBLE PVC	103029
8	MOUNTING FRAME	SS	111263
9	BEDDING COMPOUND	CUSTOMER SUPPLY	N/A
10	320 STOP	STEEL	
11	LOCK	ALUMINUM	VARIES
12	BACKFILL	URETHANE	103032
13	VENT VINYL	FLEXIBLE PVC (SOME CONFIG.)	103063
14	O90 GLAZING SPLINE	FLEXIBLE PVC (SOME CONFIG.)	103061
15	T-BAR WEATHER STRIP W/FIN	HAIR	103079
16	WEATHER STRIP W/O FIN	HAIR	103078



STANDARD DIMENSIONS

ID	DESCRIPTION	DIMENSION
A	FLANGE COVERAGE	37mm (1 7/16")
B	EXTERIOR PROTRUSION	5mm (3/16")
C	INTERIOR PROTRUSION	37mm (1 1/2")
D	SPIGOT TO CLEARVIEW	32mm (1 1/4")
E	FLANGE THICKNESS	3mm (1/8")



SECTION A-A WITH CLAMP IN INSTALLATION

NOTES:

- GENERAL HEEL TOLERANCE +0/-1/4" OVERALL
- AVAILABLE WITH 4"(76MM) RADIUS OR MITERED CORNERS
- STANDARD MOUNTING HOLES ARE 3/16" WITH #10 COUNTERSUNK
- GLAZING OPTIONS: 6mm GLASS
- INSTALLATION: BOLT ON

DRAWING NUMBER

325S

DIAMOND SEA GLAZE MANUFACTURING LTD.
26995 GLOUCESTER WAY, LANGLEY B.C.
CANADA V4W 3Y3
TOLL FREE: 1-800-770-0455
PHONE: 604-607-0091
FAX: 604-607-0092

SCALE

NTS

BY

KT

Q:\DSGlogo2.bmp

ITEM NAME

325S

ITEM DESCRIPTION

SS SLIDING OPENING WINDOW

ALL DRAWINGS AND ANY ASSOCIATED INFORMATION HEREON CONTAIN PROPRIETARY AND/OR CONFIDENTIAL INFORMATION, AND SHALL NOT BE REPRODUCED, DISCLOSED OR SUBMITTED TO ANY THIRD PARTY WITHOUT PRIOR CONSENT FROM DIAMOND SEA GLAZE MANUFACTURING LTD.