

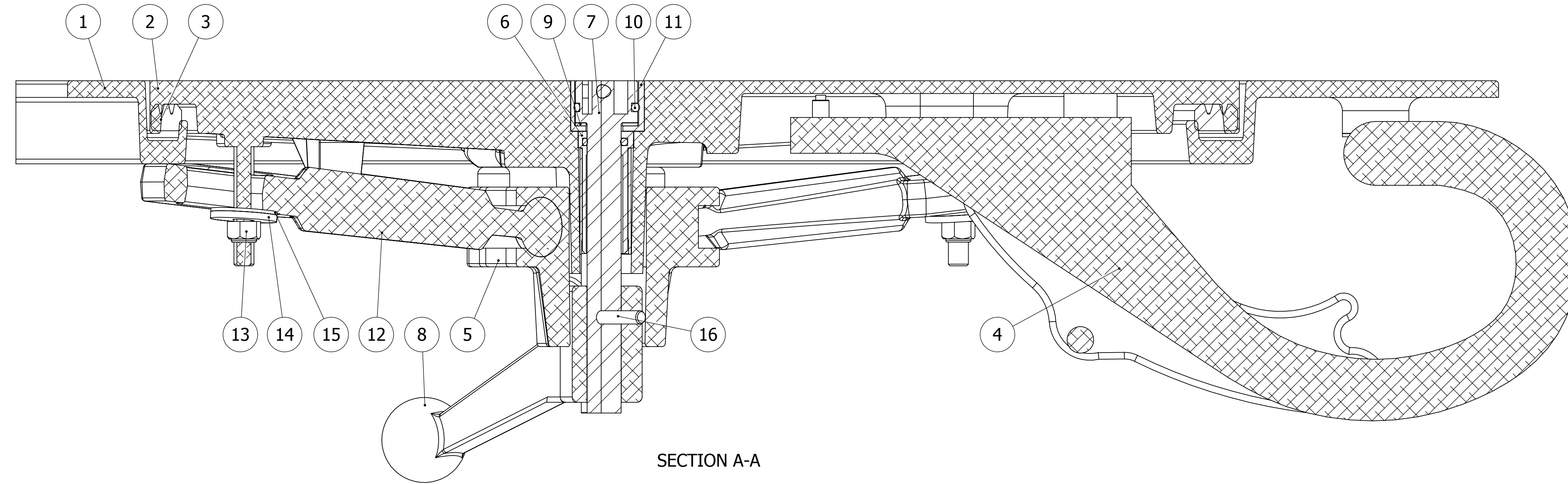


D

C

B

A

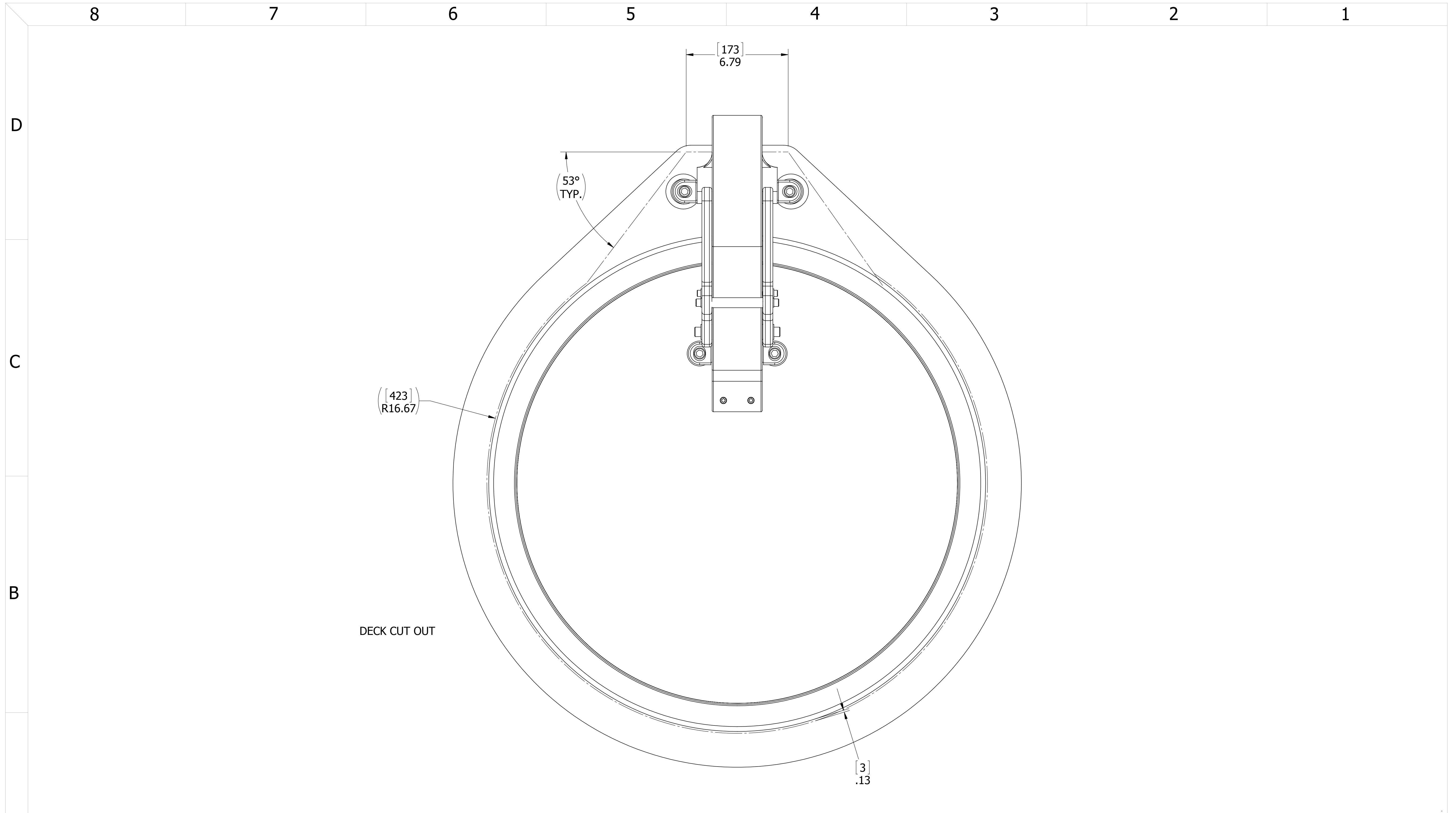


SECTION A-A

ITEM NO.	PART NUMBER	DESCRIPTION	MATERIAL
1	2486-1002	RING, YOKE, (22-H K)	ALUMINUM, 356
2	2486-3041	COVER, YOKE, (22-H K)	ALUMINUM, 356
3	9835-2007	GASKET, 20ALK (4.93' OF 0631-9835)	NEOPRENE
4	0461-2077	HINGE ASSY, YOKE, CAST HATCH, W/HOLD OPEN	REF S/A B.O.M.
5	0011-2006	HUB, 4 HOLE - SHORT	ALUMINUM, 535.2
6	0031-2001	BUSHING ASSY, STD HATCH, W/SLEEVE	REF. S/A - B.O.M.
7	0031-2107	SPINDLE, INTERLOCKING, FLUSH TO 1/4 TEAK	STAINLESS STEEL, 316L
8	0112-2003	ESCAPE HANDLE, AL	ALUMINUM, 535.2-F
9	0413-2049	WASHER, SHIM CAST HATCH BI-SQ	ACETAL, BLACK
10	0441-2045	O-RING, 27MM X 4MM	BUNA-N
11	0441-2133	CUP, INTERLOCKING SPINDLE, FLUSH TO 1/4	STAINLESS STEEL, 316L
12	0211-2010	DOG, LOCKING ARM 24, AL	ALUMINUM, 535.2-F
13	0411-2032	LOCKNUT, NYLON INSERT, 3/8-16, 316 S/S	STAINLESS STEEL, 316
14	0411-2033	WASHER, .406 X 1.25 X .125, 316 S/S	STAINLESS STEEL, 316
15	0413-2005	WASHER, .406 X 1.250 X .062 NYLON	NYLON
16	0411-2004	PIN, KNURLED, 1/4 X 2-1/4, 316 S/S	STAINLESS STEEL, 316L

- 3. FINISH: 125 RMS MAX.
  - 2. BREAK SHARP EDGES AND DEBURR.
  - 1. MATERIAL:
- NOTES: UNLESS OTHERWISE SPECIFIED.

SPECIFICATIONS SUBJECT TO CHANGE WITHOUT NOTICE.		<b>FREEMAN MARINE EQUIPMENT, INC.</b> 28336 HUNTER CREEK ROAD GOLD BEACH, OR 97444 U.S.A. PHONE: 541-247-7078 FAX: 541-247-2114 www.freemanmarine.com	
UNLESS OTHERWISE SPECIFIED DIMENSIONS ARE IN INCHES, TOLERANCES FOR ROUGH AND CLEAR OPENING ± .125 INCH. ALL OTHERS ARE: .X .XX .XXX ANGLES ±.1 ±.03 ±.010 ±2°		CLIENT: <b>FREEMAN MARINE</b> TITLE: <b>HATCH: 22-H [K] RO INTEGRAL YOKE WH, EH</b>	
PROJECTION		DRAWN: S SNYDER DATE: 22 AUG 08 CHECKED: DATE: ENGR: DATE: DESIGN ACTIVITY: DATE: CONTRACT NO.:	
DO NOT SCALE DRAWING		SIZE: <b>D</b> CAGE CODE: <b>64747</b> DRAWING NUMBER: <b>2486-0062-0001</b> REV. <b>-</b> SCALE: 3:4 CALC. WT. ACT. WT. SHEET 2 OF 3	



- 3. FINISH: 125 RMS MAX.
  - 2. BREAK SHARP EDGES AND DEBURR.
  - 1. MATERIAL:
- NOTES: UNLESS OTHERWISE SPECIFIED.

**CUSTOMER APPROVAL**

Signature: \_\_\_\_\_  
 Date: \_\_\_\_\_

IMPORTANT! THIS DRAWING SUPERSEDES ALL OTHER DOCUMENTS. By signing this approval you accept and agree that the dimensions and details shown are correct and properly fit your application, regardless of any differences between this drawing and any contract specifications. Should you see any errors in the drawing, or have any questions, please contact your Freeman Marine sales engineer for clarification.

REV.	DESCRIPTION:	DATE:	DRAWN
-	INITIAL RELEASE	22 AUG 08	SAS

SPECIFICATIONS SUBJECT TO CHANGE WITHOUT NOTICE.

PROJECTION

UNLESS OTHERWISE SPECIFIED DIMENSIONS ARE IN INCHES, TOLERANCES FOR ROUGH AND CLEAR OPENING ± .125 INCH. ALL OTHERS ARE:

.X	.XX	.XXX	ANGLES
±.1	±.03	±.010	±2°

DO NOT SCALE DRAWING

 <small>CONFIDENTIAL PROPERTY OF FREEMAN MARINE EQUIPMENT, INC. UNAUTHORIZED USE, REPRODUCTION OR DISTRIBUTION IS STRICTLY PROHIBITED. ALL CODES REMAIN THE PROPERTY OF FREEMAN MARINE EQUIPMENT, INC. AND MUST BE RETURNED UPON REQUEST. © ALL RIGHTS RESERVED 2012, FREEMAN MARINE EQUIPMENT, INC.</small>		28336 HUNTER CREEK ROAD GOLD BEACH, OR 97444 U.S.A. PHONE: 541-247-7078 FAX: 541-247-2114 www.freemanmarine.com			
		CLIENT: <b>FREEMAN MARINE</b>			
DRAWN: S SNYDER CHECKED: ENGR: DESIGN ACTIVITY: CONTRACT NO.:	DATE: 22 AUG 08 DATE: DATE: DATE:	TITLE: <b>HATCH: 22-H [K] RO INTEGRAL YOKE WH, EH</b>	SIZE: <b>D</b> CAGE CODE: <b>64747</b> SCALE: 1:2.25	DRAWING NUMBER: <b>2486-0062-0001</b> CALC WT. ACT. WT.	REV.: <b>-</b> SHEET 3 OF 3