

- 9. FOR SPECIFIC INFORMATION CONTACT SALES.
- 8. COMPLETE ASSEMBLY WEIGHT W/ DECK RING, 58LBS/ 26.4K.
- 7. DOGGING PRESSURE FULLY ADJUSTABLE.
- 6. ALUMINUM ALLOY MECHANISM SHOWN.
- 5. FLUSH, WATERTIGHT CONSTRUCTION.
- 4. REMOVABLE INTERLOCKING TOPSIDE "T" HANDLE STANDARD.
- 3. CAST ALUMINUM ALLOY FLANGE, FLANGE CAN BE DRILLED FOR BOLTED INSTALLATIONS OR WELDED TO ALUMINUM.
- 2. QUICK-ACTING, MECHANISM ENGAGES OR DISENGAGES IN QUARTER-TURN OF CENTER SPINDLE.
- 1. 24" DIAMETER CLEAR OPENING, ALL DIMENSIONS SHOWN SUBJECT TO CASTING VARIATION AND ARE REFERENCE ONLY.

NOTES: UNLESS OTHERWISE SPECIFIED.

CONFIDENTIAL PROPERTY OF FREEMAN MARINE EQUIPMENT INC. UNAUTHORIZED USE, COPYING OR DISTRIBUTION IS STRICTLY PROHIBITED. POSSESSOR OF THIS DOCUMENT AGREES TO THE FOREGOING AND SHALL RETURN THIS DOCUMENT UPON REQUEST. © ALL RIGHTS RESERVED 2004		FREEMAN MARINE EQUIPMENT, INC. 28336 HUNTER CREEK ROAD GOLD BEACH, OR 97444 U.S.A. PHONE: 541-247-7078 FAX: 541-247-2114 www.freemanmarine.com	
SPECIFICATIONS SUBJECT TO CHANGE WITHOUT NOTICE.		CLIENT: FREEMAN MARINE	
PROJECTION		TITLE: HATCH: 24-H [K] ROUND, YOKE HINGE, W/ ESCAPE HANDLE	
UNLESS OTHERWISE SPECIFIED DIMENSIONS ARE IN INCHES, TOLERANCES FOR ROUGH AND CLEAR OPENING ± .125 INCH. ALL OTHERS ARE: .X .XX .XXX ANGLES ±.1 ±.03 ±.010 ±2°		SIZE: D CAGE CODE: 64747 DRAWING NUMBER: 2487-0062-0001 REV. -	
DO NOT SCALE DRAWING		SCALE: 1:3 CALC. WT. ACT. WT. SHEET 1 OF 3	
DRAWN: G MACEACHERN CHECKED: P CANCELLIERI ENGR: DESIGN ACTIVITY: CONTRACT NO.:	DATE: 03DEC09 DATE: 03DEC09 DATE: DATE:	DRAWN: G MACEACHERN CHECKED: P CANCELLIERI ENGR: DESIGN ACTIVITY: CONTRACT NO.:	
INITIAL RELEASE REV. DESCRIPTION:	03DEC09 GJM DATE: DRAWN	SHEET 1 OF 3	

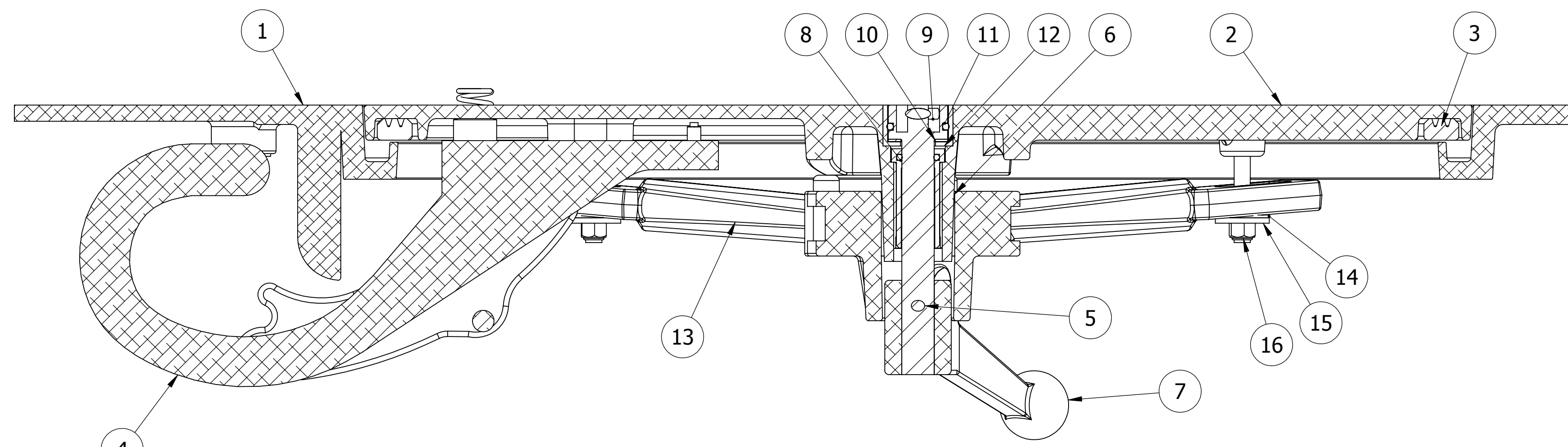
8 7 6 5 4 3 2 1

D

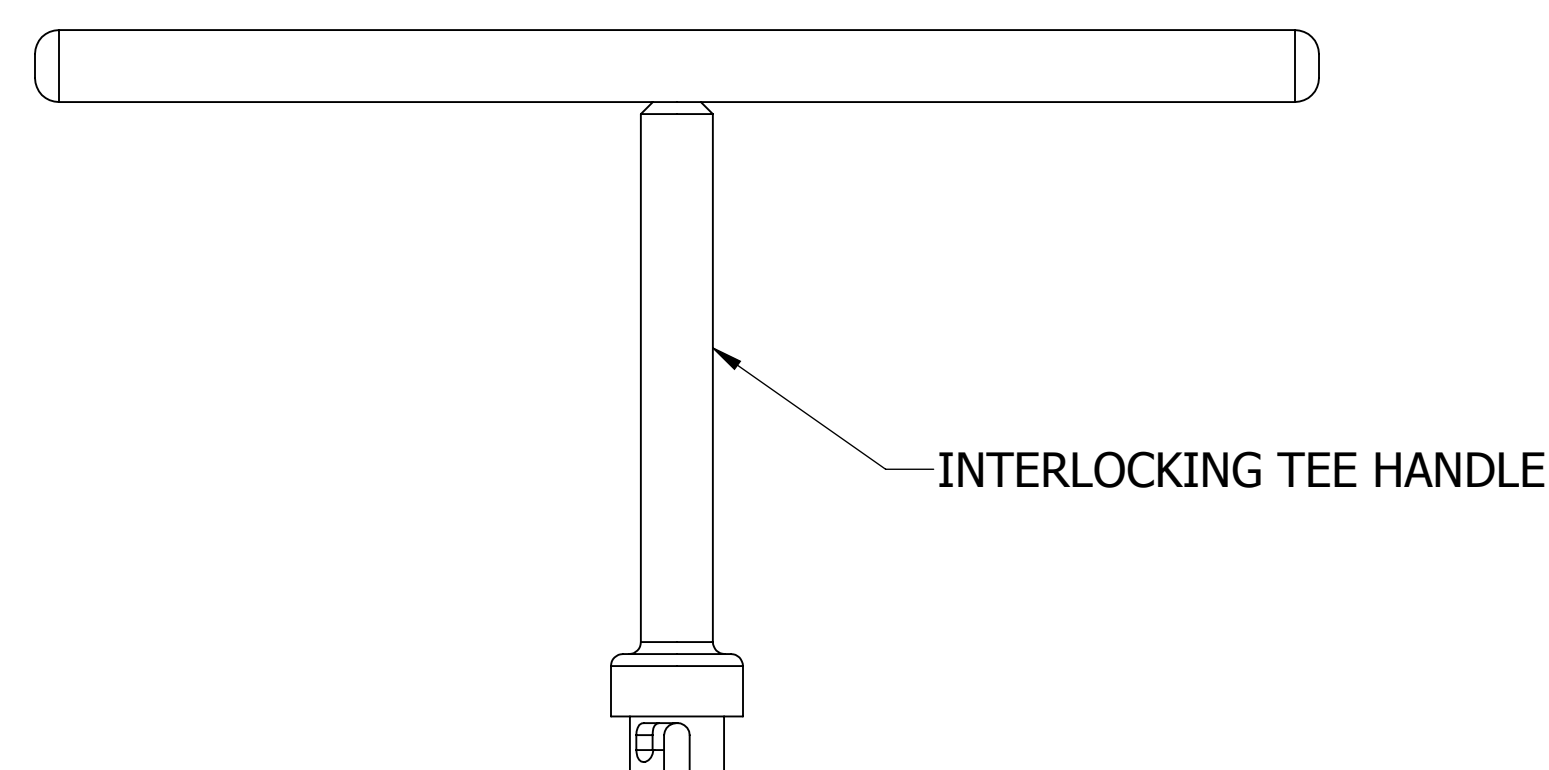
C

B

A



SECTION C-C
SCALE 1 : 2



INTERLOCKING TEE HANDLE

ITEM NO.	QTY.	PART NUMBER	DESCRIPTION	MATERIAL
16	4	0411-2032	LOCKNUT, NYLON INSERT, 3/8-16, 316 S/S	STAINLESS STEEL, 316
15	4	0411-2033	WASHER, .406 X 1.25 X .125, 316 S/S	STAINLESS STEEL, 316
14	4	0413-2005	WASHER, .406 X 1.250 X .062 NYLON	NYLON
13	4	0211-2012	DOG, LOCKING ARM 24, AL	ALUMINUM, 535.2-F
12	1	0441-2133	CUP, INTERLOCKING SPINDLE, FLUSH TO 1/4	STAINLESS STEEL, 316L
11	1	0441-2045	O-RING, 27MM X 4MM	BUNA-N
10	1	0413-2049	WASHER, SHIM CAST HATCH BI-SQ	ACETAL, BLACK
9	1	0031-2107	SPINDLE, INTERLOCKING, FLUSH TO 1/4 TEAK	STAINLESS STEEL, 316L
8	1	0031-2001	BUSHING ASSY, STD HATCH, W/SLEEVE	REF. S/A - B.O.M.
7	1	0112-2003	ESCAPE HANDLE, AL	ALUMINUM, 535.2-F
6	1	0011-2006	HUB, 4 HOLE - SHORT	ALUMINUM, 535.2
5	1	0411-2004	PIN, KNURLED, 1/4 X 2-1/4, 316 S/S	STAINLESS STEEL, 316L
4	1	0461-2077	HINGE ASSY, YOKE, CAST HATCH, W/HOLD OPEN	REF S/A B.O.M.
3	1	9835-2014	GASKET	NEOPRENE
2	1	2412-3041	COVER, MODEL 24	ALUMINUM
1	1	2487-1002	RING: 24K ALUM W/FLANGE, BOSS, YOKE HINGE	ALUMINUM, A356.0-F

NOTES: UNLESS OTHERWISE SPECIFIED.

REV.	DESCRIPTION	DATE	DRAWN
-	INITIAL RELEASE	03DEC09	GJM

SPECIFICATIONS SUBJECT TO CHANGE WITHOUT NOTICE.

PROJECTION

UNLESS OTHERWISE SPECIFIED DIMENSIONS ARE IN INCHES, TOLERANCES FOR ROUGH AND CLEAR OPENING ± .125 INCH. ALL OTHERS ARE:

.X	.XX	.XXX	ANGLES
±.1	±.03	±.010	±2°

DO NOT SCALE DRAWING

FREEMAN MARINE EQUIPMENT, INC.

28336 HUNTER CREEK ROAD
GOLD BEACH, OR 97444 U.S.A.
PHONE: 541-247-7078 FAX: 541-247-2114
www.freemanmarine.com

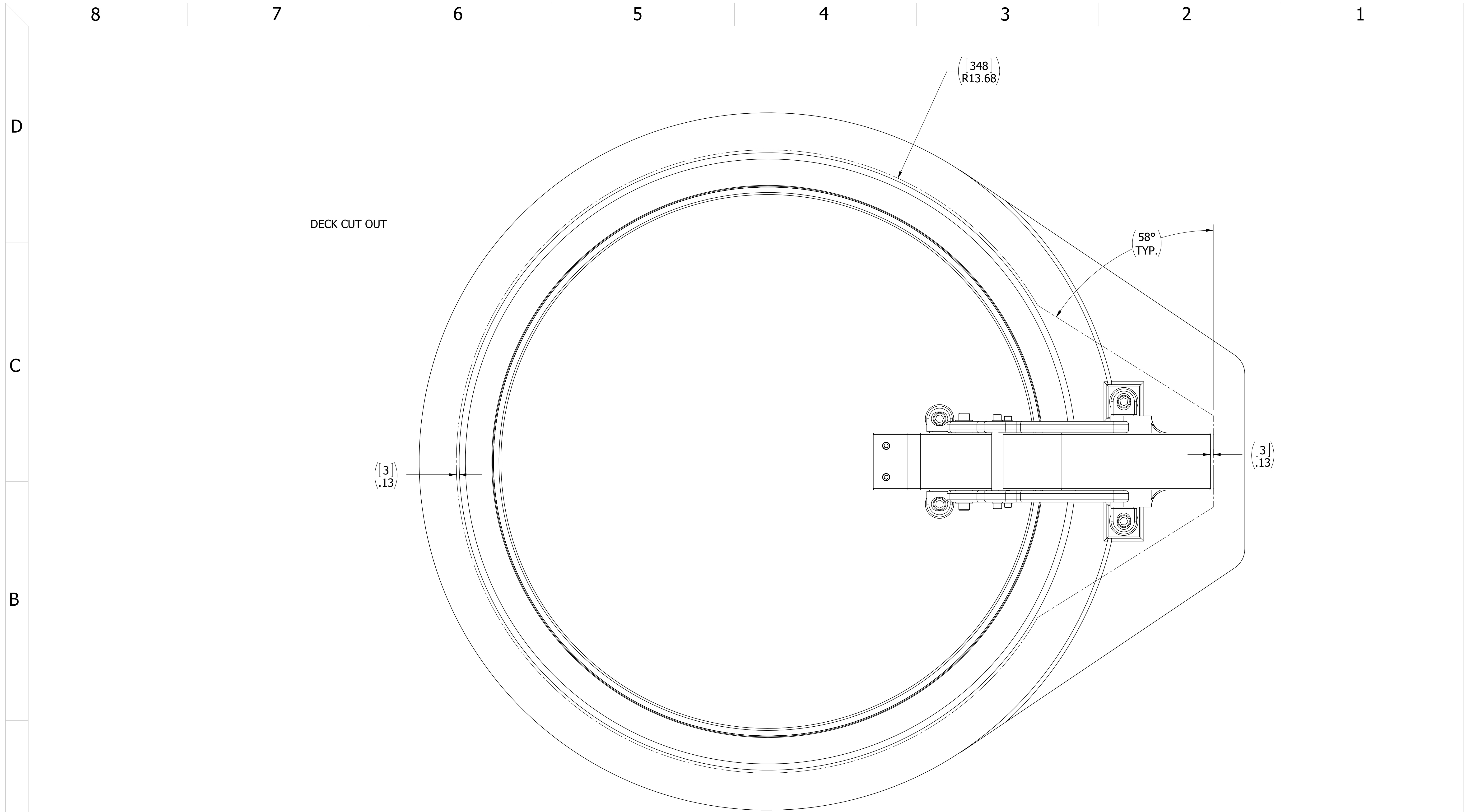
CONFIDENTIAL PROPERTY OF FREEMAN MARINE EQUIPMENT INC. UNAUTHORIZED USE, COPYING OR DISTRIBUTION IS STRICTLY PROHIBITED. POSSESSOR OF THIS DOCUMENT AGREES TO THE FOREGOING AND SHALL RETURN THIS DOCUMENT UPON REQUEST. © ALL RIGHTS RESERVED 2004

CLIENT: FREEMAN MARINE

TITLE: HATCH: 24-H [K] ROUND, YOKE HINGE, W/ ESCAPE HANDLE

SIZE	CAGE CODE	DRAWING NUMBER	REV.
D	64747	2487-0062-0001	-

SCALE: 2:3 CALC. WT. ACT. WT. SHEET 2 OF 3



- 3. FINISH: 125 RMS MAX.
- 2. BREAK SHARP EDGES AND DEBURR.
- 1. MATERIAL:

NOTES: UNLESS OTHERWISE SPECIFIED.

CUSTOMER APPROVAL

Signature: _____

Date: _____

IMPORTANT! THIS DRAWING SUPERSEDES ALL OTHER DOCUMENTS. By signing this approval you accept and agree that the dimensions and details shown are correct and properly fit your application, regardless of any differences between this drawing and any contract specifications. Should you see any errors in the drawing, or have any questions, please contact your Freeman Marine sales engineer for clarification.

REV.	DESCRIPTION	DATE	DRAWN
-	INITIAL RELEASE	03DEC09	GJM

SPECIFICATIONS SUBJECT TO CHANGE WITHOUT NOTICE.

PROJECTION

UNLESS OTHERWISE SPECIFIED DIMENSIONS ARE IN INCHES, TOLERANCES FOR ROUGH AND CLEAR OPENING ± .125 INCH. ALL OTHERS ARE:

.X	.XX	.XXX	ANGLES
±.1	±.03	±.010	±2°

DO NOT SCALE DRAWING

		28336 HUNTER CREEK ROAD GOLD BEACH, OR 97444 U.S.A. PHONE: 541-247-7078 FAX: 541-247-2114 www.freemanmarine.com	
		CLIENT: FREEMAN MARINE	TITLE: HATCH: 24-H [K] ROUND, YOKE HINGE, W/ ESCAPE HANDLE
DRAWN: G MACEACHERN CHECKED: P CANCELLIERI ENGR: DESIGN ACTIVITY: CONTRACT NO.:	DATE: 03DEC09 DATE: 03DEC09 DATE: DATE:	SIZE: D CAGE CODE: 64747 SCALE: 1:2	DRAWING NUMBER: 2487-0062-0001 ACT. WT.
		REV. - SHEET 3 OF 3	