

8. THIS DRAWING PROVIDES THE GENERAL CONFIGURATION OF A HATCH. FOR SPECIFIC INFORMATION CONTACT ADVANCED MARINE TECHNOLOGIES SALES.

7. DOGGING PRESSURE FULLY ADJUSTABLE.

6. ALUMINUM ALLOY MECHANISM SHOWN.

5. FLUSH, WATERTIGHT CONSTRUCTION.

A 4. ALUMINUM RING AND FLANGE CAN BE DRILLED FOR BOLTED INSTALLATIONS, OR WELDED TO ALUMINUM.

3. CAST ALUMINUM COVER.

2. QUICK ACTING MECHANISM ENGAGES OR DISENGAGES IN QUARTER-TURN OF CENTER SPINDLE.

1. ALL DIMENSIONS SHOWN SUBJECT TO CASTING VARIATION AND ARE FOR REFERENCE ONLY.

NOTES: UNLESS OTHERWISE SPECIFIED.

CUSTOMER APPROVAL

Signature: _____

Date: _____

IMPORTANT! THIS DRAWING SUPERSEDES ALL OTHER DOCUMENTS. By signing this approval you accept and agree that the dimensions and details shown are correct and properly fit your application, regardless of any differences between this drawing and any contract specifications. Should you see any errors in the drawing, or have any questions, please contact your Freeman Marine sales engineer for clarification.

REV.	DESCRIPTION	DATE	DRAWN
A	PRODUCTION RELEASE	23MAY13	ZJC

SPECIFICATIONS SUBJECT TO CHANGE WITHOUT NOTICE.

PROJECTION

UNLESS OTHERWISE SPECIFIED DIMENSIONS ARE IN INCHES, TOLERANCES FOR ROUGH AND CLEAR OPENING ± .125 INCH. ALL OTHERS ARE:

.X	.XX	.XXX	ANGLES
±.1	±.03	±.010	±2°

DO NOT SCALE DRAWING

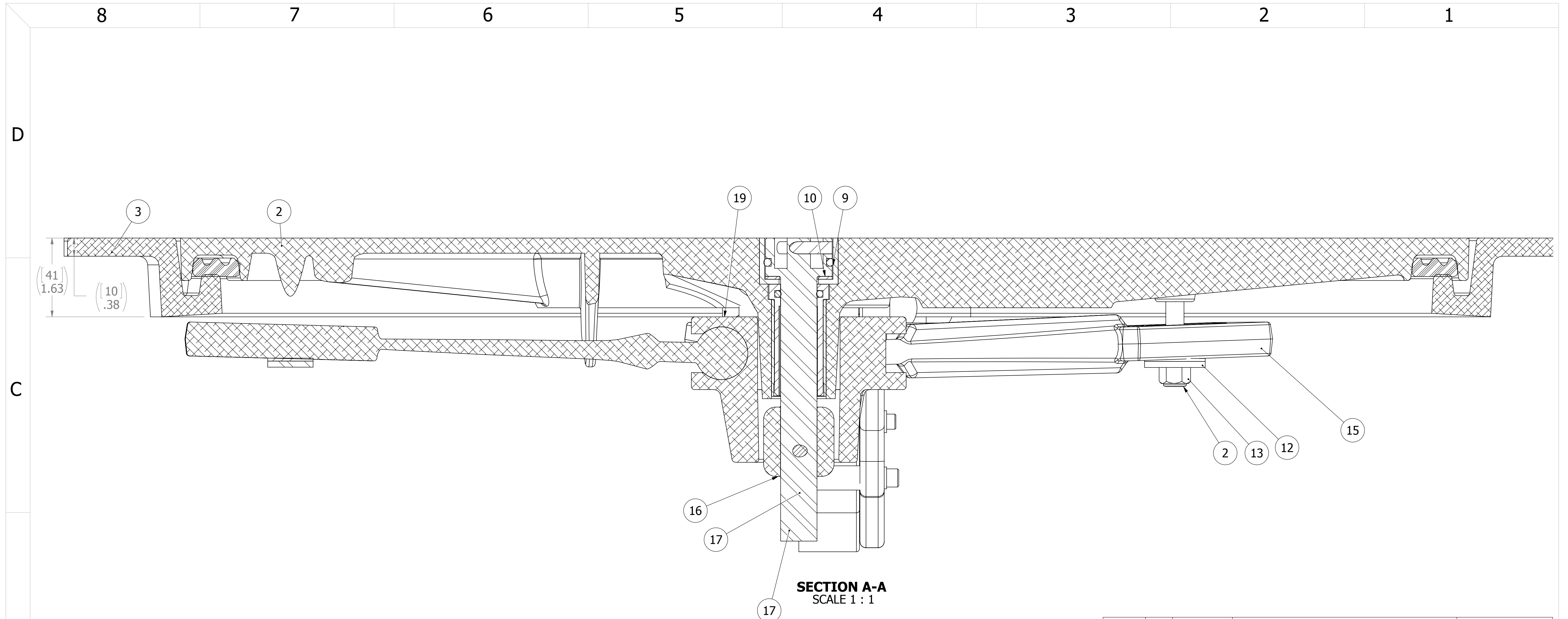
FREEMAN MARINE EQUIPMENT, INC.
 28336 HUNTER CREEK ROAD
 GOLD BEACH, OR 97444 U.S.A.
 PHONE: 541-247-7078 FAX: 541-247-2114
 www.freemanmarine.com

CLIENT: **FREEMAN MARINE**

TITLE: **MODEL 2492, QUICK ACTING CAST HATCH INTEGRAL YOKE, ALUM, DECK RING**

SIZE	CAGE CODE	DRAWING NUMBER	REV.
D	64747	2492-0062	A

SCALE: 1:3 CALC. WT. ACT. WT. SHEET 1 OF 3



- 8. THIS DRAWING PROVIDES THE GENERAL CONFIGURATION OF A HATCH. FOR SPECIFIC INFORMATION CONTACT ADVANCED MARINE TECHNOLOGIES SALES.
- 7. DOGGING PRESSURE FULLY ADJUSTABLE.
- 6. ALUMINUM ALLOY MECHANISM SHOWN.
- 5. FLUSH, WATERTIGHT CONSTRUCTION.
- 4. ALUMINUM RING AND FLANGE CAN BE DRILLED FOR BOLTED INSTALLATIONS, OR WELDED TO ALUMINUM.
- 3. CAST ALUMINUM COVER.
- 2. QUICK ACTING MECHANISM ENGAGES OR DISENGAGES IN QUARTER-TURN OF CENTER SPINDLE.
- 1. ALL DIMENSIONS SHOWN SUBJECT TO CASTING VARIATION AND ARE FOR REFERENCE ONLY.

NOTES: UNLESS OTHERWISE SPECIFIED.

ITEM NO.	QTY.	PART NUMBER	DESCRIPTION	MATERIAL
19	1	0011-2006	HUB, 4 HOLE - SHORT	ALUMINUM, 535.2
18	1	0031-2001	BUSHING ASSY, STD HATCH, W/SLEEVE	REF. S/A - B.O.M.
17	1	0031-2107	SPINDLE, INTERLOCKING, FLUSH TO 1/4 TEAK	STAINLESS STEEL, 316L
16	1	0112-2001	ACTUATOR, AL	ALUMINUM, 535
15	4	0211-2007	DOG, LOCKING ARM	ALUMINUM, 535.2-F
14	1	0411-2004	PIN, KNURLED, 1/4 X 2-1/4, 316 S/S	STAINLESS STEEL, 316L
13	4	0411-2032	LOCKNUT, NYLON INSERT, 3/8-16, 316 S/S	STAINLESS STEEL, 316
12	4	0411-2033	WASHER, .406 X 1.25 X .125, 316 S/S	STAINLESS STEEL, 316
11	4	0413-2005	WASHER, .406 X 1.250 X .062 NYLON	NYLON
10	1	0413-2049	WASHER, SHIM CAST HATCH BI-SQ	ACETAL, BLACK
9	1	0441-2045	O-RING, 27MM X 4MM	BUNA-N
8	1	0441-2341	CUP, INTERLOCKING SPINDLE, FLUSH TO 1/4	ACETRON GP, BLACK
7	1	0461-2077	HINGE ASSY, YOKE, CAST HATCH, W/HOLD OPEN	REF S/A B.O.M.
6	2	0462-2405	BOSS, MOUNT, YOKE HINGE, CAST HATCH (0611-9531)	6061-T6511 ALUMINUM
5	2	0462-2524	BOSS, MOUNT, YOKE HINGE, CAST HATCH (0613-9513)	316L STAINLESS STEEL
4	1	2492-1002-1	FLANGE, YOKE HINGE, 1926 CAST HATCH, L, ALUM	ALUMINUM
3	1	2492-1002-2	RING: 1926 ALUM	ALUMINUM A356.0-F
2	1	2492-3041	COVER: 1926 ALUM, FINISHED CASTING	ALUMINUM, A356.0-F
1	1	9885-2012	GASKET	NEOPRENE, 25 DURO

A

CUSTOMER APPROVAL

Signature: _____
 Date: _____
 IMPORTANT! THIS DRAWING SUPERSEDES ALL OTHER DOCUMENTS. By signing this approval you accept and agree that the dimensions and details shown are correct and properly fit your application, regardless of any differences between this drawing and any contract specifications. Should you see any errors in the drawing, or have any questions, please contact your Freeman Marine sales engineer for clarification.

REV.	DESCRIPTION	DATE	DRAWN
A	PRODUCTION RELEASE	23MAY13	ZJC

SPECIFICATIONS SUBJECT TO CHANGE WITHOUT NOTICE.

PROJECTION

UNLESS OTHERWISE SPECIFIED DIMENSIONS ARE IN INCHES, TOLERANCES FOR ROUGH AND CLEAR OPENING ± .125 INCH. ALL OTHERS ARE:

.X	.XX	.XXX	ANGLES
±.1	±.03	±.010	±2°

DO NOT SCALE DRAWING

FREEMAN MARINE EQUIPMENT, INC.

28336 HUNTER CREEK ROAD
 GOLD BEACH, OR 97444 U.S.A.
 PHONE: 541-247-7078 FAX: 541-247-2114
 www.freemanmarine.com

CONFIDENTIAL PROPERTY OF FREEMAN MARINE EQUIPMENT, INC. UNAUTHORIZED USE, REPRODUCTION OR DISTRIBUTION IS STRICTLY PROHIBITED. ALL COPIES REMAIN THE PROPERTY OF FREEMAN MARINE EQUIPMENT, INC. AND MUST BE RETURNED UPON REQUEST.
 © ALL RIGHTS RESERVED 2012, FREEMAN MARINE EQUIPMENT, INC.

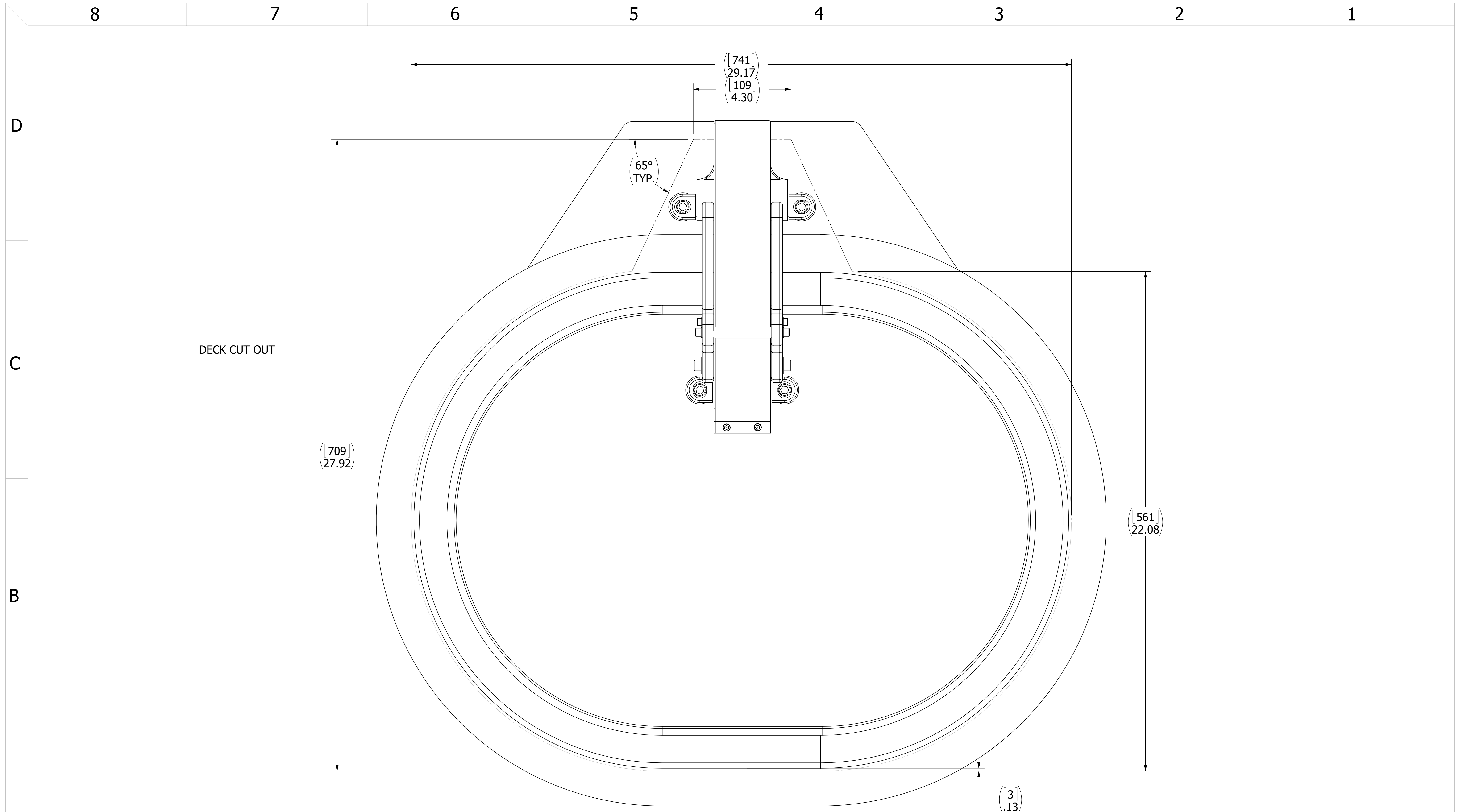
DRAWN: Z. CARPENTER DATE: 23MAY13
 CHECKED: D. VOES DATE: 23MAY13
 ENGR: DATE: _____
 DESIGN ACTIVITY: DATE: _____
 CONTRACT NO.:

CLIENT: FREEMAN MARINE

TITLE: MODEL 2492, QUICK ACTING CAST HATCH INTEGRAL YOKE, ALUM, DECK RING

SIZE	CAGE CODE	DRAWING NUMBER	REV.
D	64747	2492-0062	A

SCALE: 1:3 CALC. WT. ACT. WT. SHEET 2 OF 3



DECK CUT OUT

- 3. FINISH: 125 RMS MAX.
 - 2. BREAK SHARP EDGES AND DEBURR.
 - 1. MATERIAL: REF. S/A - B.O.M.
- NOTES: UNLESS OTHERWISE SPECIFIED.

CUSTOMER APPROVAL

Signature: _____
 Date: _____

IMPORTANT! THIS DRAWING SUPERSEDES ALL OTHER DOCUMENTS. By signing this approval you accept and agree that the dimensions and details shown are correct and properly fit your application, regardless of any differences between this drawing and any contract specifications. Should you see any errors in the drawing, or have any questions, please contact your Freeman Marine sales engineer for clarification.

REV.	DESCRIPTION:	DATE:	DRAWN
A	PRODUCTION RELEASE	23MAY13	ZJC

SPECIFICATIONS SUBJECT TO CHANGE WITHOUT NOTICE.

PROJECTION

UNLESS OTHERWISE SPECIFIED DIMENSIONS ARE IN INCHES, TOLERANCES FOR ROUGH AND CLEAR OPENING ± .125 INCH. ALL OTHERS ARE:

.X	.XX	.XXX	ANGLES
±.1	±.03	±.010	±2°

DO NOT SCALE DRAWING

FREEMAN MARINE EQUIPMENT, INC.

CONFIDENTIAL PROPERTY OF FREEMAN MARINE EQUIPMENT, INC. UNAUTHORIZED USE, REPRODUCTION OR DISTRIBUTION IS STRICTLY PROHIBITED. ALL CODES REMAIN THE PROPERTY OF FREEMAN MARINE EQUIPMENT, INC. AND MUST BE RETURNED UPON REQUEST. © ALL RIGHTS RESERVED 2012, FREEMAN MARINE EQUIPMENT, INC.

28336 HUNTER CREEK ROAD
 GOLD BEACH, OR 97444 U.S.A.
 PHONE: 541-247-7078 FAX: 541-247-2114
 www.freemanmarine.com

CLIENT: **FREEMAN MARINE**

TITLE: **MODEL 2492, QUICK ACTING CAST HATCH INTEGRAL YOKE, ALUM, DECK RING**

SIZE	CAGE CODE	DRAWING NUMBER	REV.
D	64747	2492-0062	A

SCALE: 1:2 CALC. WT. ACT. WT. SHEET 3 OF 3