

9. THIS DRAWING PROVIDES THE GENERAL CONFIGURATION OF A HATCH, FOR SPECIFIC INFORMATION CONTACT FREEMAN MARINE SALES.
8. ALUMINUM ALLOY MECHANISM SHOWN.
7. FLUSH, WATERTIGHT CONSTRUCTION.
6. INTERLOCKING SPINDLE EXTERIOR.
5. STAINLESS STEEL COAMING.
4. DIMENSIONS ARE SHOWN IN REFERENCE STATE DUE TO VARIATIONS IN THE CASTING PROCESS.
3. COVER MATERIAL A356-T6
2. QUICK ACTING MECHANISM ENGAGES OR DISENGAGES IN QUARTER-TURN OF CENTER SPINDLE.
1. 24.7" X 24.7" CLEAR OPENING.
- NOTES: UNLESS OTHERWISE SPECIFIED.

CLEAR OPENING

ISOMETRIC VIEW

A

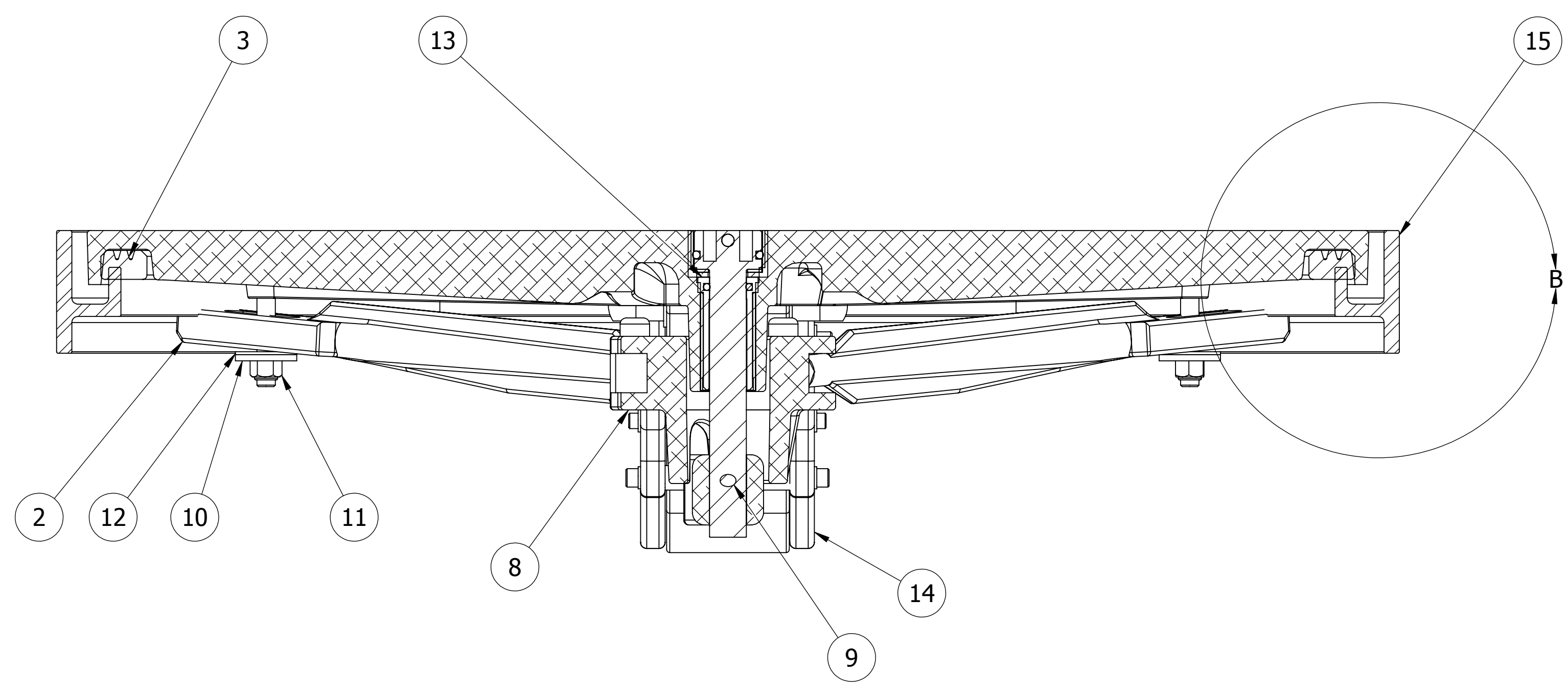
SPECIFICATIONS SUBJECT TO CHANGE WITHOUT NOTICE.		FREEMAN MARINE EQUIPMENT, INC. 28336 HUNTER CREEK ROAD GOLD BEACH, OR 97444 U.S.A. PHONE: 541-247-7078 FAX: 541-247-2114 www.freemanmarine.com	
PROJECTION		CLIENT:	
UNLESS OTHERWISE SPECIFIED DIMENSIONS ARE IN INCHES, TOLERANCES FOR ROUGH AND CLEAR OPENING ± .125 INCH. ALL OTHERS ARE: .X .XX .XXX ANGLES ±.1 ±.03 ±.010 ±2°		TITLE: MODLE 2495, QUICK ACTING HATCH 2424K YOKE HINGED	
DO NOT SCALE DRAWING		SIZE CAGE CODE DRAWING NUMBER REV. D 64747 2495-0003	
REV. DESCRIPTION:	DATE: DRAWN	SCALE: 1:8	CALC. WT. ACT. WT. SHEET 1 OF 3

D

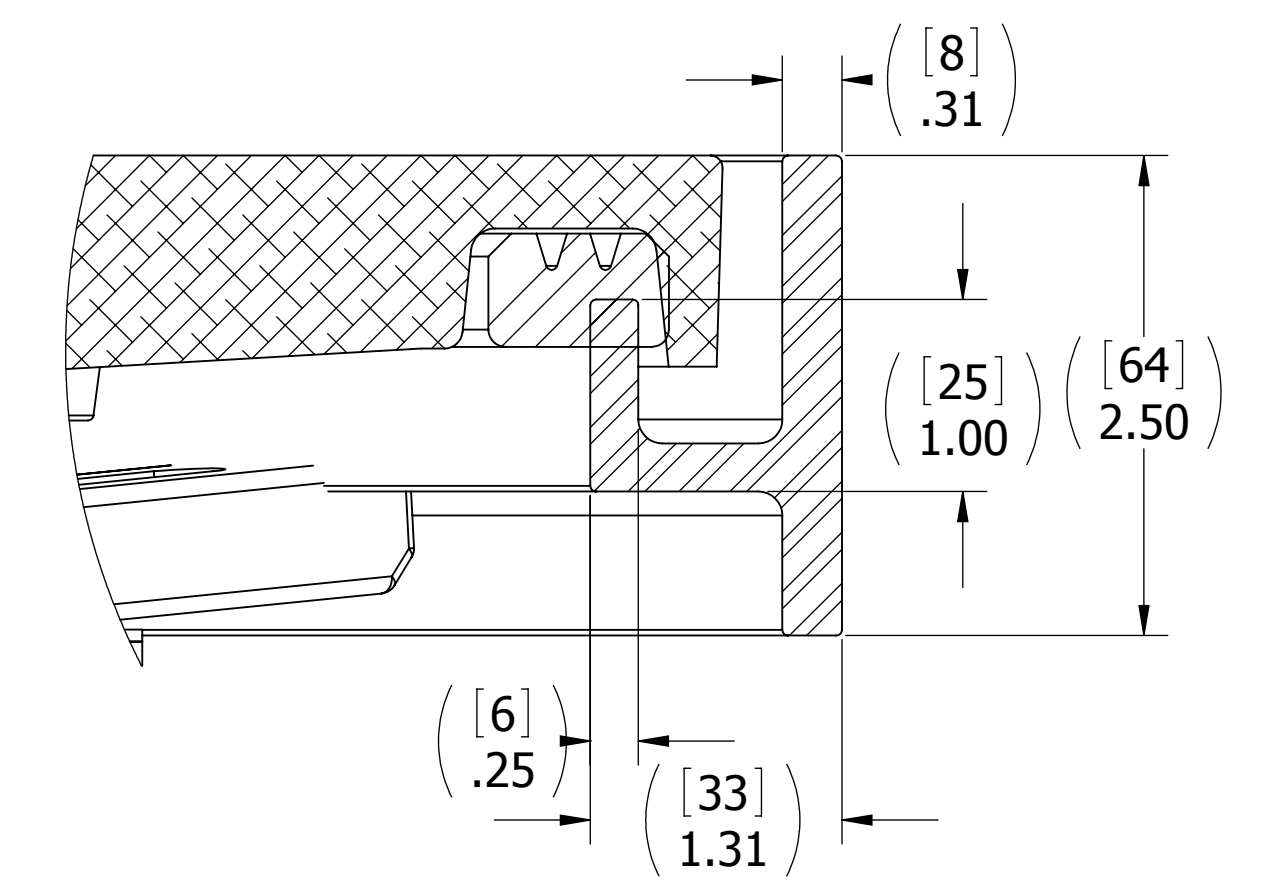
C

B

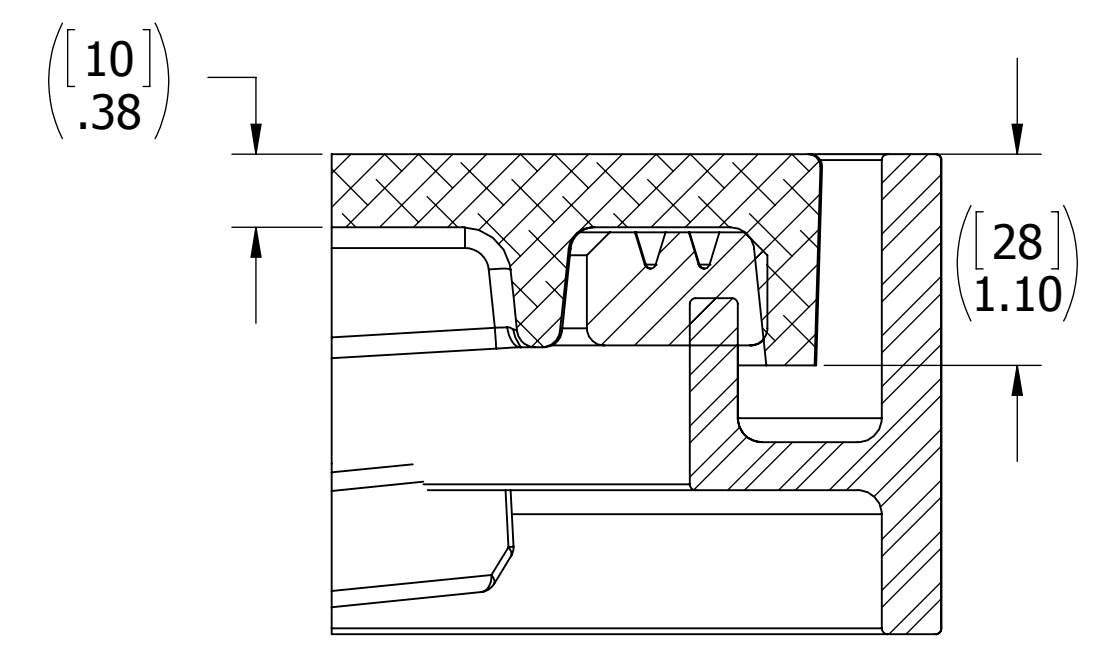
A



SECTION A-A
SCALE 1 : 2



DETAIL B
SCALE 1 : 1



SECTION C-C
SCALE 1 : 1

ITEM NO.	QTY.	PART NUMBER	DESCRIPTION	MATERIAL
17	1	0112-2001	ACTUATOR, AL	ALUMINUM, 535
16	1	0462-2526	FLANGE 2424 K	STAINLESS STEEL 316
15	1	2424-1003	RING 2424 K	STEEL, A-36
14	1	0461-2077	HINGE ASSY, YOKE, CAST HATCH, W/HOLD OPEN	REF S/A B.O.M.
13	1	0031-2001	BUSHING ASSY, STD HATCH, W/SLEEVE	REF. S/A - B.O.M.
12	4	0413-2005	WASHER, .406 X 1.250 X .062 NYLON	NYLON
11	4	0411-2032	LOCKNUT, NYLON INSERT, 3/8-16, 316 S/S	STAINLESS STEEL, 316
10	4	0411-2033	WASHER, .406 X 1.25 X .125, 316 S/S	STAINLESS STEEL, 316
9	1	0411-2004	PIN, KNURLED, 1/4 X 2-1/4, 316 S/S	STAINLESS STEEL, 316L
8	1	0011-2006	HUB, 4 HOLE - SHORT	ALUMINUM, 535.2
7	1	0031-2107	SPINDLE, INTERLOCKING, FLUSH TO 1/4 TEAK	STAINLESS STEEL, 316L
6	1	0441-2045	O-RING, 27MM X 4MM	BUNA-N
5	1	0413-2049	WASHER, SHIM CAST HATCH BI-SQ	ACETAL, BLACK
4	1	0441-2133	CUP, INTERLOCKING SPINDLE, FLUSH TO 1/4	STAINLESS STEEL, 316L
3	1	9813-2004	GASKET, 2424 (7.33' OF 0631-9813)	NEOPRENE
2	4	0211-2013	DOG, LOCKING ARM	ALUMINUM, 535.2-F
1	1	2424-3041-1	CASTING, HATCH COVER, 2424	ALUMINUM, 356

REV. DESCRIPTION: DATE: DRAWN

SPECIFICATIONS SUBJECT TO CHANGE WITHOUT NOTICE.

PROJECTION

UNLESS OTHERWISE SPECIFIED DIMENSIONS ARE IN INCHES, TOLERANCES FOR ROUGH AND CLEAR OPENING ± .125 INCH. ALL OTHERS ARE:

.X	.XX	.XXX	ANGLES
±.1	±.03	±.010	±2°

DO NOT SCALE DRAWING

FREEMAN
MARINE EQUIPMENT, INC.

CONFIDENTIAL PROPERTY OF FREEMAN MARINE EQUIPMENT INC. UNAUTHORIZED USE, COPYING OR DISTRIBUTION IS STRICTLY PROHIBITED. POSSESSOR OF THIS DOCUMENT AGREES TO THE FOREGOING AND SHALL RETURN THIS DOCUMENT UPON REQUEST. © ALL RIGHTS RESERVED 2004

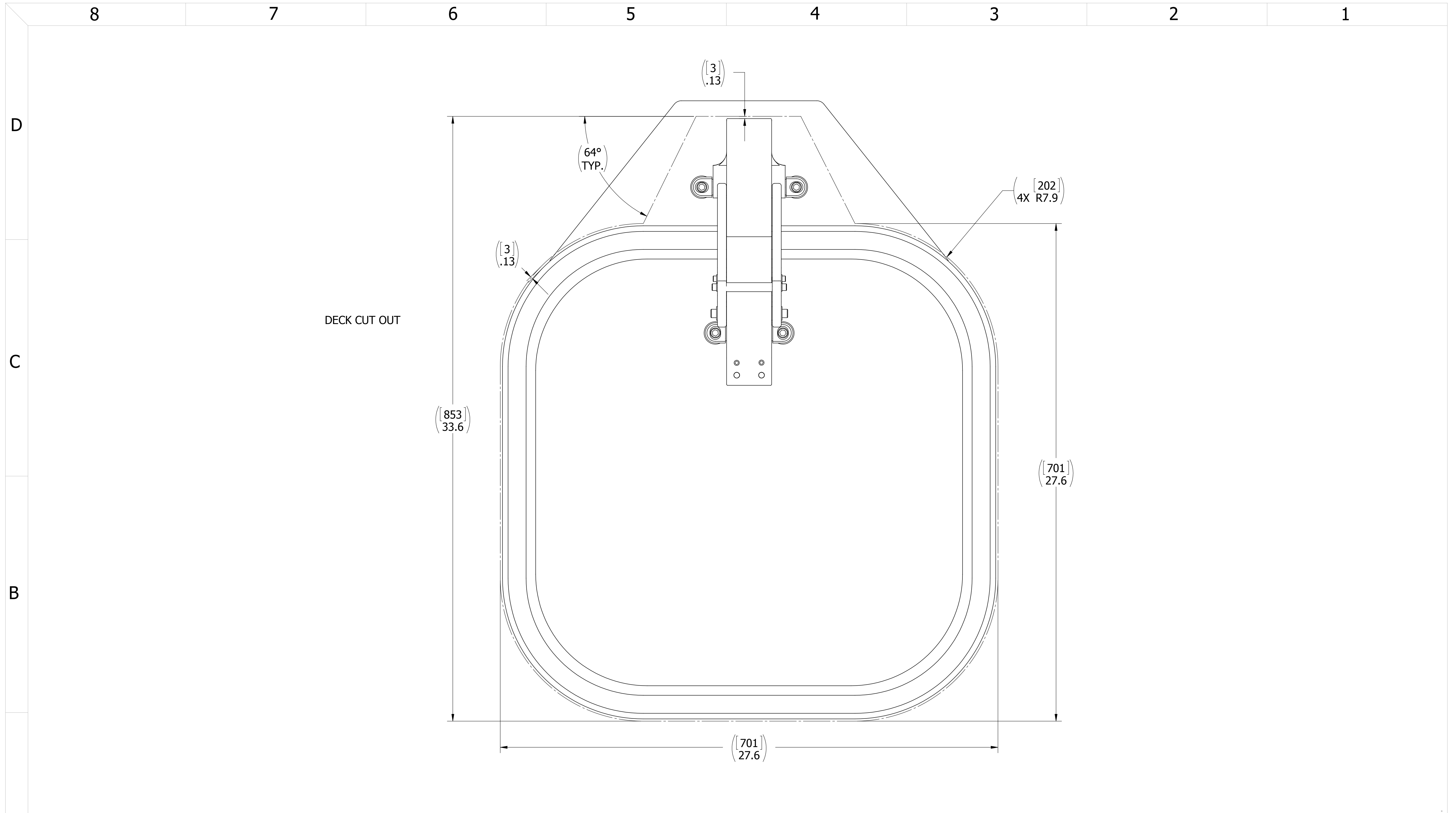
DRAWN: T KUHNHAUSEN DATE: 12SEP07
 CHECKED: P. CANCELLIERI DATE: 10DEC09
 ENGR: DATE: _____
 DESIGN ACTIVITY: DATE: _____
 CONTRACT NO.: _____

28336 HUNTER CREEK ROAD
 GOLD BEACH, OR 97444 U.S.A.
 PHONE: 541-247-7078 FAX: 541-247-2114
 www.freemanmarine.com

CLIENT:
MODLE 2495, QUICK ACTING HATCH
2424K YOKE HINGED

SIZE	CAGE CODE	DRAWING NUMBER	REV.
D	64747	2495-0003	

SCALE: 1:8 CALC. WT. ACT. WT. SHEET 2 OF 3



A

- 3. FINISH: 125 RMS MAX.
 - 2. BREAK SHARP EDGES AND DEBURR.
 - 1. MATERIAL: REF. S/A - B.O.M.
- NOTES: UNLESS OTHERWISE SPECIFIED.

CUSTOMER APPROVAL

Signature: _____
 Date: _____

IMPORTANT! THIS DRAWING SUPERSEDES ALL OTHER DOCUMENTS. By signing this approval you accept and agree that the dimensions and details shown are correct and properly fit your application, regardless of any differences between this drawing and any contract specifications. Should you see any errors in the drawing, or have any questions, please contact your Freeman Marine sales engineer for clarification.

REV.	DESCRIPTION:	DATE:	DRAWN

SPECIFICATIONS SUBJECT TO CHANGE WITHOUT NOTICE.

PROJECTION

UNLESS OTHERWISE SPECIFIED DIMENSIONS ARE IN INCHES, TOLERANCES FOR ROUGH AND CLEAR OPENING ± .125 INCH. ALL OTHERS ARE:

.X	.XX	.XXX	ANGLES
±.1	±.03	±.010	±2°

DO NOT SCALE DRAWING

FREEMAN MARINE EQUIPMENT, INC.		28336 HUNTER CREEK ROAD GOLD BEACH, OR 97444 U.S.A. PHONE: 541-247-7078 FAX: 541-247-2114 www.freemanmarine.com	
<small>CONFIDENTIAL PROPERTY OF FREEMAN MARINE EQUIPMENT, INC. UNAUTHORIZED USE, REPRODUCTION OR DISTRIBUTION IS STRICTLY PROHIBITED. ALL COPIES REMAIN THE PROPERTY OF FREEMAN MARINE EQUIPMENT, INC. AND MUST BE RETURNED UPON REQUEST.</small>		CLIENT:	
DRAWN: T KUHNHAUSEN CHECKED: P. CANCELLIERI ENGR:		DATE: 12SEP07 DATE: 10DEC09 DATE:	
DESIGN ACTIVITY:		DATE:	
CONTRACT NO.:		TITLE: MODLE 2495, QUICK ACTING HATCH 2424K YOKE HINGED	
D		SIZE: 64747	DRAWING NUMBER: 2495-0003
SCALE: 1:2.5		CALC WT.	ACT. WT.
		SHEET 3 OF 3	