

- 10. FOR SPECIFIC INFORMATION CONTACT SALES.
- 9. COMPLETE ASSEMBLY WEIGHT W/ DECK RING, 125LBS/ 57K.
- 6. DOGGING PRESSURE FULLY ADJUSTABLE.
- 5. ALUMINUM ALLOY MECHANISM SHOWN.
- 4. FLUSH, WATERTIGHT CONSTRUCTION.
- 3. STEEL RING FOR WELD IN DECK APPLICATION.
- 2. QUICK-ACTING, MECHANISM ENGAGES OR DISENGAGES IN QUARTER-TURN OF CENTER SPINDLE.
- 1. 36.4" X 36.7" CLEAR OPENING, ALL DIMENSIONS SHOWN SUBJECT TO CASTING VARIATION AND ARE REFERENCE ONLY.

NOTES: UNLESS OTHERWISE SPECIFIED.

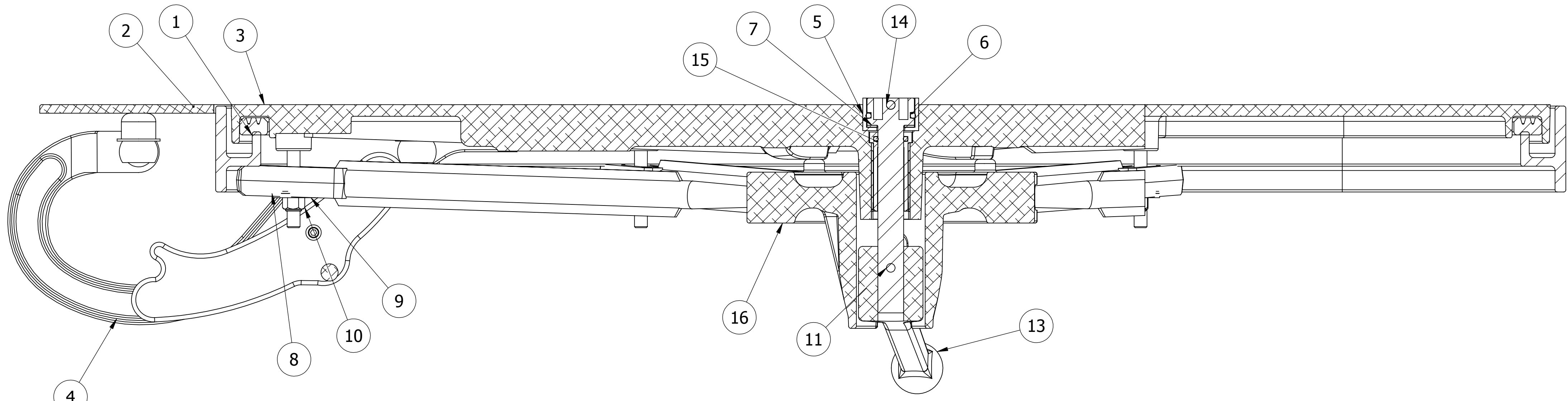
SPECIFICATIONS SUBJECT TO CHANGE WITHOUT NOTICE.		FREEMAN MARINE EQUIPMENT, INC. 28336 HUNTER CREEK ROAD GOLD BEACH, OR 97444 U.S.A. PHONE: 541-247-7078 FAX: 541-247-2114 www.freemanmarine.com	
UNLESS OTHERWISE SPECIFIED DIMENSIONS ARE IN INCHES, TOLERANCES FOR ROUGH AND CLEAR OPENING ± .125 INCH. ALL OTHERS ARE: .X .XX .XXX ANGLES ±.1 ±.03 ±.010 ±2°		CLIENT: FREEMAN MARINE MODEL 2497 QUICK ACTING HATCH 3636K YOKE HINGE W/ INTEGRAL TOPSIDE HANDLE	
PROJECTION		TITLE: 64747 2497-0063-0001	
DO NOT SCALE DRAWING		SIZE: D	
A PRODUCTION RELEASE 22MAY13 ZJC		CAGE CODE: 64747	
REV. DESCRIPTION: DATE: DRAWN		DRAWING NUMBER: 2497-0063-0001	
		SCALE: 1:5	
		CALC. WT. ACT. WT.	
		SHEET 1 OF 3	

D

C

B

A



SECTION A-A
SCALE 1 : 2

ITEM NO.	QTY.	PART NUMBER	DESCRIPTION	MATERIAL
16	1	0011-2007	HUB, AL, 8 HOLE	ALUMINUM, 535.2-F
15	1	0031-2001	BUSHING ASSY, STD HATCH, W/SLEEVE	REF. S/A - B.O.M.
14	1	0031-2107	SPINDLE, INTERLOCKING, FLUSH TO 1/4 TEAK	STAINLESS STEEL, 316L
13	1	0112-2023	ESCAPE HANDLE, 8 HOLE HUB, AL	ALUMINUM, 535.2-F
12	8	0211-2026	DOG, LOCKING ARM, 3636, AL	ALUMINUM, 535.2-F
11	1	0411-2005	PIN, KNURLED, 1/4 X 2-3/4, 316 S/S	STAINLESS STEEL, 316
10	8	0411-2032	LOCKNUT, NYLON INSERT, 3/8-16, 316 S/S	STAINLESS STEEL, 316
9	8	0411-2033	WASHER, .406 X 1.25 X .125, 316 S/S	STAINLESS STEEL, 316
8	8	0413-2005	WASHER, .406 X 1.250 X .062 NYLON	NYLON
7	1	0413-2049	WASHER, SHIM CAST HATCH BI-SQ	ACETAL, BLACK
6	1	0441-2045	O-RING, 27MM X 4MM	BUNA-N
5	1	0441-2133	CUP, INTERLOCKING SPINDLE, FLUSH TO 1/4	ACETRON GP, BLACK
4	1	0461-2077	HINGE ASSY, YOKE, CAST HATCH, W/HOLD OPEN	REF S/A B.O.M.
3	1	2428-3041	COVER, 3636 FLAT TOP	ALUMINUM
2	1	2497-1003	RING, 3636	MILD STEEL
1	1	9813-2006	GASKET: 3636ALR(11.56FT. OF 0631-9813)	NEOPRENE

SPECIFICATIONS SUBJECT TO CHANGE WITHOUT NOTICE.		FREEMAN MARINE EQUIPMENT, INC. 28336 HUNTER CREEK ROAD GOLD BEACH, OR 97444 U.S.A. PHONE: 541-247-7078 FAX: 541-247-2114 www.freemanmarine.com	
PROJECTION		CLIENT: FREEMAN MARINE	
UNLESS OTHERWISE SPECIFIED DIMENSIONS ARE IN INCHES, TOLERANCES FOR ROUGH AND CLEAR OPENING ± .125 INCH. ALL OTHERS ARE: .X .XX .XXX ANGLES ±.1 ±.03 ±.010 ±2°		TITLE: MODEL 2497 QUICK ACTING HATCH 3636K YOKE HINGE W/ INTEGRAL TOPSIDE HANDLE	
DO NOT SCALE DRAWING		SIZE: D CAGE CODE: 64747 DRAWING NUMBER: 2497-0063-0001 REV. A	
A PRODUCTION RELEASE DATE: 22MAY13 ZJC		SCALE: 1:5 CALC. WT. ACT. WT. SHEET 2 OF 3	

