

- 10. FOR SPECIFIC INFORMATION CONTACT SALES.
- 9. COMPLETE ASSEMBLY WEIGHT W/ DECK RING, 125LBS/ 57K.
- 6. DOGGING PRESSURE FULLY ADJUSTABLE.
- 5. ALUMINUM ALLOY MECHANISM SHOWN.
- 4. FLUSH, WATERTIGHT CONSTRUCTION.
- 3. STAINLESS STEEL RING FOR WELD IN DECK APPLICATION.
- 2. QUICK-ACTING, MECHANISM ENGAGES OR DISENGAGES IN QUARTER-TURN OF CENTER SPINDLE.
- 1. 36.4" X 36.7" CLEAR OPENING, ALL DIMENSIONS SHOWN SUBJECT TO CASTING VARIATION AND ARE REFERENCE ONLY.

NOTES: UNLESS OTHERWISE SPECIFIED.

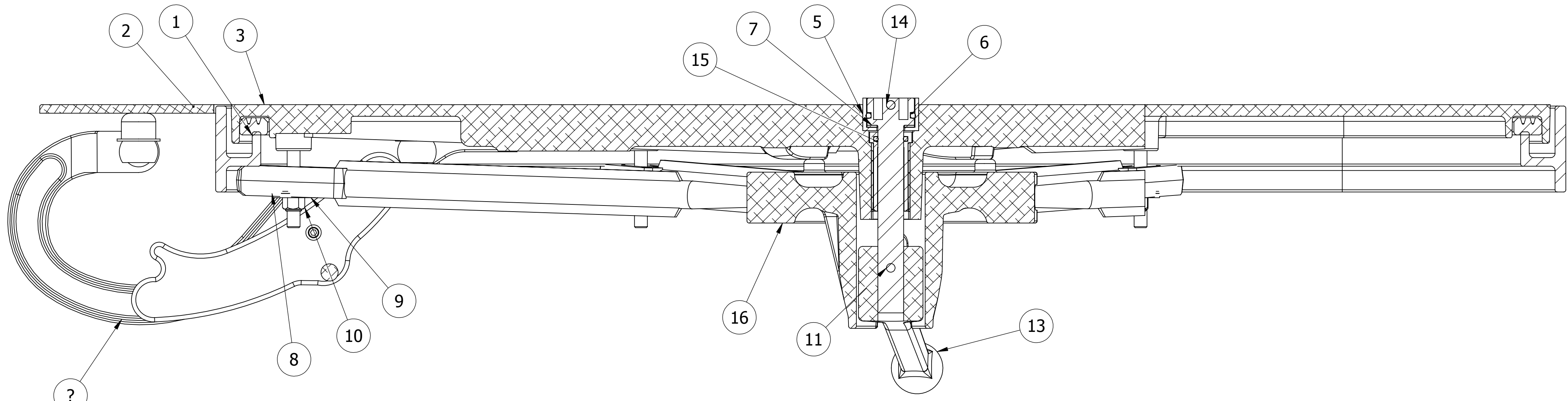
CONFIDENTIAL PROPERTY OF FREEMAN MARINE EQUIPMENT, INC. UNAUTHORIZED USE, COPYING OR DISTRIBUTION IS STRICTLY PROHIBITED. POSSESSOR OF THIS DOCUMENT AGREES TO THE FOREGOING AND SHALL RETURN THIS DOCUMENT UPON REQUEST. © ALL RIGHTS RESERVED 2004		FREEMAN MARINE EQUIPMENT, INC. 28336 HUNTER CREEK ROAD GOLD BEACH, OR 97444 U.S.A. PHONE: 541-247-7078 FAX: 541-247-2114 www.freemanmarine.com	
SPECIFICATIONS SUBJECT TO CHANGE WITHOUT NOTICE.		CLIENT: FREEMAN MARINE MODEL 2497 QUICK ACTING HATCH 3636K YOKE HINGE W/ INTEGRAL TOPSIDE HANDLE	
PROJECTION		TITLE: MODEL 2497 QUICK ACTING HATCH 3636K YOKE HINGE W/ INTEGRAL TOPSIDE HANDLE	
UNLESS OTHERWISE SPECIFIED DIMENSIONS ARE IN INCHES, TOLERANCES FOR ROUGH AND CLEAR OPENING ± .125 INCH. ALL OTHERS ARE: .X .XX .XXX ANGLES ±.1 ±.03 ±.010 ±2°		DRAWN: Z. CARPENTER DATE: 22MAY13 CHECKED: D. YOES DATE: 22MAY13 ENGR: DATE: DESIGN ACTIVITY: DATE: CONTRACT NO.:	
DO NOT SCALE DRAWING		SIZE: D CAGE CODE: 64747 DRAWING NUMBER: 2497-0065-0001 REV. A SCALE: 1:5 CALC. WT. ACT. WT. SHEET 1 OF 3	
A PRODUCTION RELEASE REV. DESCRIPTION:	22MAY13 DATE:	ZJC DRAWN	

D

C

B

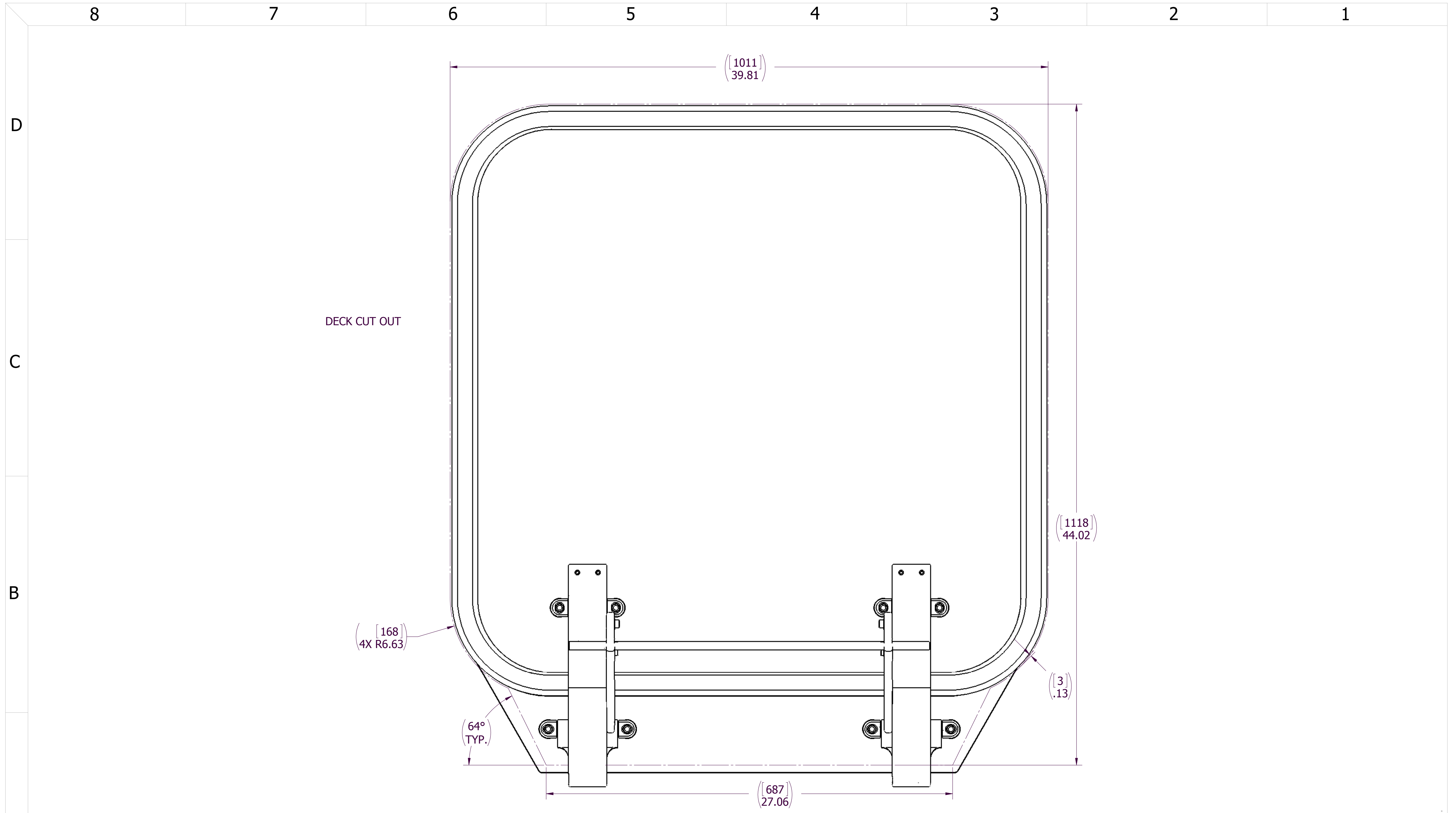
A



SECTION A-A
SCALE 1 : 2

ITEM NO.	QTY.	PART NUMBER	DESCRIPTION	MATERIAL
16	1	0011-2007	HUB, AL, 8 HOLE	ALUMINUM, 535.2-F
15	1	0031-2001	BUSHING ASSY, STD HATCH, W/SLEEVE	REF. S/A - B.O.M.
14	1	0031-2107	SPINDLE, INTERLOCKING, FLUSH TO 1/4 TEAK	STAINLESS STEEL, 316L
13	1	0112-2023	ESCAPE HANDLE, 8 HOLE HUB, AL	ALUMINUM, 535.2-F
12	8	0211-2026	DOG, LOCKING ARM, 3636, AL	ALUMINUM, 535.2-F
11	1	0411-2005	PIN, KNURLED, 1/4 X 2-3/4, 316 S/S	STAINLESS STEEL, 316
10	8	0411-2032	LOCKNUT, NYLON INSERT, 3/8-16, 316 S/S	STAINLESS STEEL, 316
9	8	0411-2033	WASHER, .406 X 1.25 X .125, 316 S/S	STAINLESS STEEL, 316
8	8	0413-2005	WASHER, .406 X 1.250 X .062 NYLON	NYLON
7	1	0413-2049	WASHER, SHIM CAST HATCH BI-SQ	ACETAL, BLACK
6	1	0441-2045	O-RING, 27MM X 4MM	BUNA-N
5	1	0441-2133	CUP, INTERLOCKING SPINDLE, FLUSH TO 1/4	ACETRON GP, BLACK
4	1	0461-2077	HINGE ASSY, YOKE, CAST HATCH, W/HOLD OPEN	REF S/A B.O.M.
3	1	2428-3041	COVER, 3636 FLAT TOP	ALUMINUM
2	1	2497-1005	RING, 3636	STAINLESS STEEL
1	1	9813-2006	GASKET: 3636ALR(11.56FT. OF 0631-9813)	NEOPRENE

SPECIFICATIONS SUBJECT TO CHANGE WITHOUT NOTICE.		FREEMAN MARINE EQUIPMENT, INC.		28336 HUNTER CREEK ROAD GOLD BEACH, OR 97444 U.S.A. PHONE: 541-247-7078 FAX: 541-247-2114 www.freemanmarine.com	
PROJECTION		UNLESS OTHERWISE SPECIFIED DIMENSIONS ARE IN INCHES, TOLERANCES FOR ROUGH AND CLEAR OPENING ± .125 INCH. ALL OTHERS ARE: .X .XX .XXX ANGLES ±.1 ±.03 ±.010 ±2°		CLIENT: FREEMAN MARINE TITLE: MODEL 2497 QUICK ACTING HATCH 3636K YOKE HINGE W/ INTEGRAL TOPSIDE HANDLE	
DRAWN: Z. CARPENTER CHECKED: D. YOES ENGR: DESIGN ACTIVITY: CONTRACT NO.:		DATE: 22MAY13 DATE: 22MAY13 DATE:		SIZE: D CAGE CODE: 64747 DRAWING NUMBER: 2497-0065-0001 SCALE: 1:5 CALC WT. ACT. WT.	
A PRODUCTION RELEASE REV. DESCRIPTION:		DATE: 22MAY13 DRAWN: ZJC		REV. A SHEET 2 OF 3	



DECK CUT OUT

(168)
4X R6.63

64°
TYP.

(1118)
44.02

(3)
.13

(687)
27.06

(1011)
39.81

- 3. FINISH: 125 RMS MAX.
 - 2. BREAK SHARP EDGES AND DEBURR.
 - 1. MATERIAL: REF. S/A - B.O.M.
- NOTES: UNLESS OTHERWISE SPECIFIED.

CUSTOMER APPROVAL

Signature: _____
Date: _____

IMPORTANT! THIS DRAWING SUPERSEDES ALL OTHER DOCUMENTS. By signing this approval you accept and agree that the dimensions and details shown are correct and properly fit your application, regardless of any differences between this drawing and any contract specifications. Should you see any errors in the drawing, or have any questions, please contact your Freeman Marine sales engineer for clarification.

REV.	DESCRIPTION	DATE	DRAWN
A	PRODUCTION RELEASE	22MAY13	ZJC

SPECIFICATIONS SUBJECT TO CHANGE WITHOUT NOTICE.

PROJECTION

UNLESS OTHERWISE SPECIFIED DIMENSIONS ARE IN INCHES, TOLERANCES FOR ROUGH AND CLEAR OPENING ± .125 INCH. ALL OTHERS ARE:

.X	.XX	.XXX	ANGLES
±.1	±.03	±.010	±2°

DO NOT SCALE DRAWING

 <small>CONFIDENTIAL PROPERTY OF FREEMAN MARINE EQUIPMENT, INC. UNAUTHORIZED USE, REPRODUCTION OR DISTRIBUTION IS STRICTLY PROHIBITED. ALL CODES REMAIN THE PROPERTY OF FREEMAN MARINE EQUIPMENT, INC. AND MUST BE RETURNED UPON REQUEST.</small> <small>© ALL RIGHTS RESERVED 2012, FREEMAN MARINE EQUIPMENT, INC.</small>		28336 HUNTER CREEK ROAD GOLD BEACH, OR 97444 U.S.A. PHONE: 541-247-7078 FAX: 541-247-2114 www.freemanmarine.com	
		CLIENT: FREEMAN MARINE	
DRAWN: Z. CARPENTER CHECKED: D. YOES ENGR: _____ DESIGN ACTIVITY: _____ CONTRACT NO.: _____		DATE: 22MAY13 DATE: 22MAY13 DATE: _____	
TITLE: MODEL 2497 QUICK ACTING HATCH 3636K YOKE HINGE		SIZE: D	CAGE CODE: 64747 DRAWING NUMBER: 2497-0065-0001 SCALE: 1:3
		REV. A	ACT. WT. _____ SHEET 3 OF 3